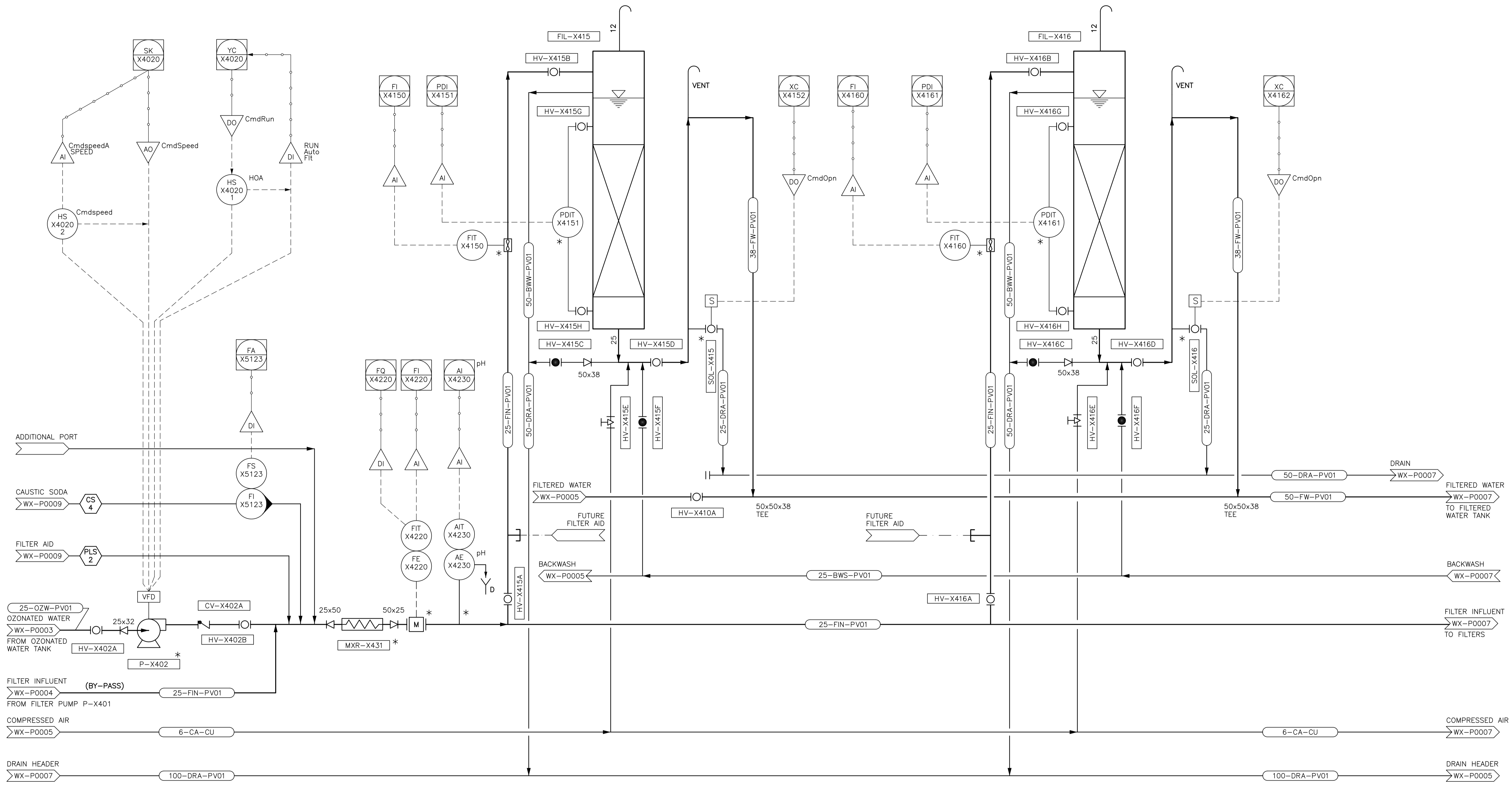


P-X402
FILTER PUMP
 CONTROL: VFD
 CAPACITY: 2.83 m³/h
 HEAD: 10.8m

FIL-X415/ X416
FILTER COLUMNS
 HEIGHT: 6.5m
 DIAMETER: 150mm

MXR-X431
STATIC MIXER
 SIZE: 50mm
 MATERIAL: PVC

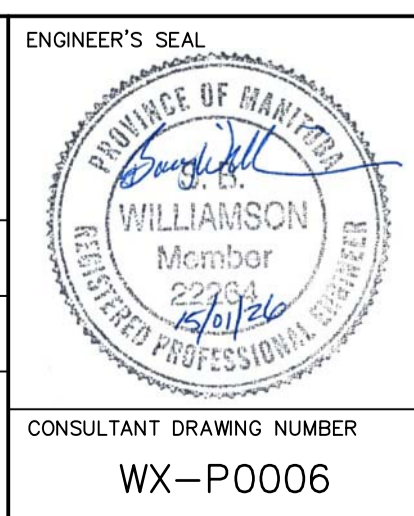


NOTES:
 * CITY OF WINNIPEG TO SUPPLY EQUIPMENT/ INSTRUMENTATION.
 CONTRACTOR TO INSTALL.



CONSTRUCTION COMPLETION DATE: YYYY MM DD			
NO.	REVISIONS	DATE	BY
2	ISSUED FOR BID OP. 1068-2014	15/01/23	JBC
1	ISSUED FOR ADDENDUM No. 1	14/06/24	JBC
0	ISSUED FOR TENDER	14/06/13	JBC

CH2MHILL	
DESIGNED BY: KG	CHECKED BY: BW
DRAWN BY: JBC	APPROVED BY: BW
SCALE: HORIZONTAL NTS	RELEASED FOR CONSTRUCTION
DATE: 2014 06 13	DATE:



THE CITY OF WINNIPEG
 WATER AND WASTE DEPARTMENT
 ENGINEERING DIVISION

CITY OF WINNIPEG WATER TREATMENT RESEARCH AND PROCESS OPTIMIZATION FACILITY
 PROCESS
 FILTER BANK B (SHEET 1 OF 2)
 PROCESS AND INSTRUMENTATION DIAGRAM

SHEET X OF X
 CITY DRAWING NUMBER
 1-0601X-P0005-001-02

FILE PATH: \\WINNIPEG\Pro\WinnipegCityof\462784Waterworks\DWG\DLV\ FILE NAME: 462784-P-0001.dwg