

**P-X401  
FILTER PUMP**

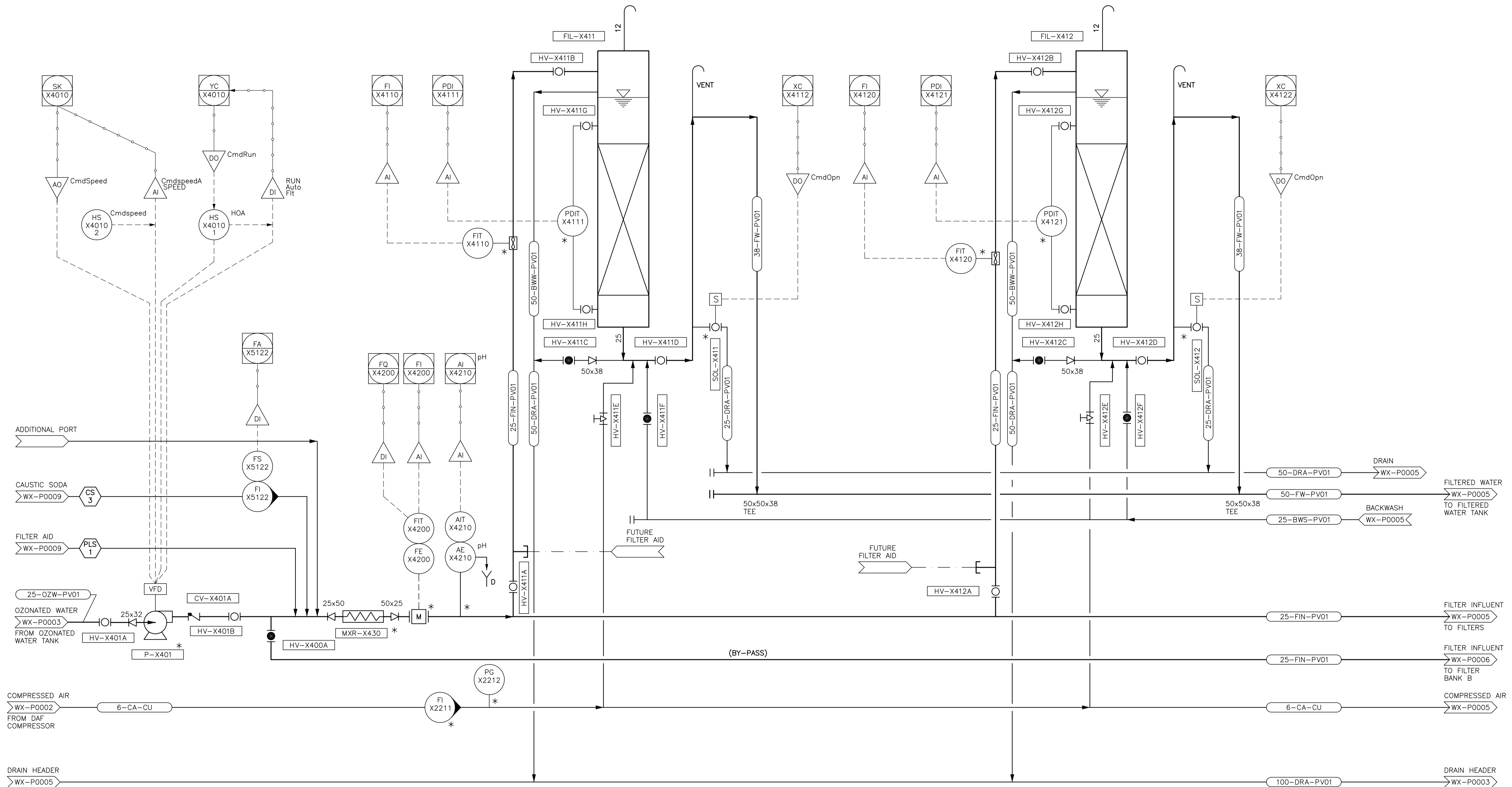
CONTROL: VFD  
CAPACITY: 2.83 m<sup>3</sup>/h  
HEAD: 10.8m

**FIL-X411/ X412  
FILTER COLUMNS**

HEIGHT: 6.5m  
DIAMETER: 150mm

**MXR-X430  
STATIC MIXER**

SIZE: 50mm  
MATERIAL: PVC

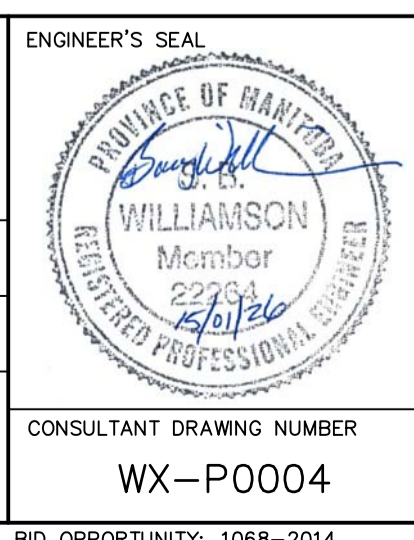


**NOTES:**  
\* CITY OF WINNIPEG TO SUPPLY EQUIPMENT/ INSTRUMENTATION.  
CONTRACTOR TO INSTALL.



B.M. ELEV.			
CONSTRUCTION COMPLETION DATE: YYYY MM DD			
NO.	REVISIONS	DATE	BY
2	ISSUED FOR BID OP. 1068-2014	15/01/23	JBC
1	ISSUED FOR ADDENDUM No. 1	14/06/24	JBC
0	ISSUED FOR TENDER	14/06/13	JBC

<b>CH2MHILL</b>	
DESIGNED BY: KG	CHECKED BY: BW
DRAWN BY: JBC	APPROVED BY: BW
SCALE: HORIZONTAL NTS, VERTICAL -	RELEASED FOR CONSTRUCTION
DATE: 2014 06 13	DATE:



**THE CITY OF WINNIPEG**  
WATER AND WASTE DEPARTMENT  
ENGINEERING DIVISION

CITY OF WINNIPEG WATER TREATMENT RESEARCH AND PROCESS OPTIMIZATION FACILITY  
PROCESS  
FILTER BANK A (SHEET 1 OF 2)  
PROCESS AND INSTRUMENTATION DIAGRAM

CONSULTANT DRAWING NUMBER: WX-P0004

SHEET X OF X  
CITY DRAWING NUMBER: 1-0601X-P0004-001-02

FILE PATH: \\WINNIPEG\Pro\WinnipegCityof\462784Waterworks\DWG\DLV\462784-P-0001.dwg