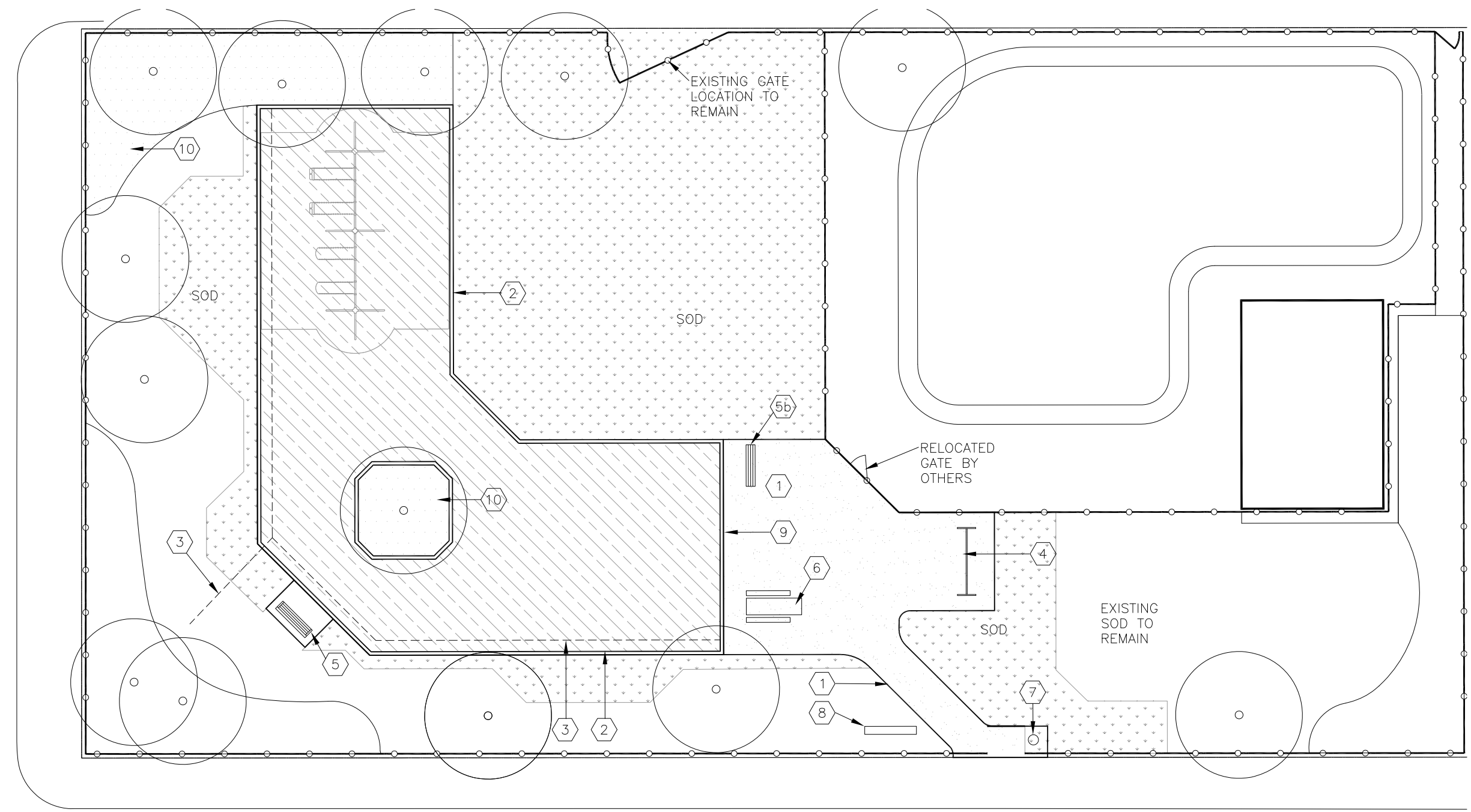


LEGEND

KEY	SYM	DESCRIPTION
1		NEW GRANULAR WALKWAY AND PICNIC AREA
2		EXTENT OF WOOD FIBRE PLAY SURFACE WITH TWO TIER TIMBER EDGING
3		MULTIFLOW PIPE WITH POP-UP EMITTER. LOCATION OF EMITTER TO BE DETERMINED ON SITE
4		BIKE RACK - PICK UP AND INSTALL
5		BENCH WITH BACK ON GRANULAR PAD- PICK UP AND INSTALL
5b		BACKLESS BENCH ON GRANULAR PAD. PICK UP AND INSTALL
6		PICNIC TABLE - PICK UP AND INSTALL
7		WASTE RECEPTACLE - PICK UP AND INSTALL
8		DOUBLE SIDED PARK SIGN - PICK UP AND INSTALL
9		ENSURE PLAY SURFACE FLUSH WITH PATH AT THIS SIDE ONLY
10		INSTALL 100mm DEPTH WOOD FIBRE
		EXTENT OF SOD INSTALLATION
		DIRECTION OF DRAINAGE

NOTES

- CONTRACTOR TO REPORT ANY DISCREPANCIES TO LANDSCAPE ARCHITECT
- GRANULAR PATH LONGITUDINAL SHALL NOT EXCEED 4.5%, CROSS SLOPE SHALL NOT EXCEED 2%



KING EDWARD ST



CONTRACTOR TO CONFIRM ALL DIMENSIONS AND REPORT ANY DISCREPANCIES TO CONTRACT ADMINISTRATOR PRIOR TO CONSTRUCTION. LOCATION OF UNDERGROUND STRUCTURES AS SHOWN ARE BASED ON THE BEST INFORMATION AVAILABLE BUT NO GUARANTEE IS GIVEN THAT ALL EXISTING UTILITIES ARE SHOWN OR THAT THE GIVEN LOCATIONS ARE EXACT. CONFIRMATION OF EXISTENCE AND EXACT LOCATION OF ALL SERVICES MUST BE OBTAINED FROM THE INDIVIDUAL UTILITIES BEFORE PROCEEDING WITH CONSTRUCTION.

THE CITY OF WINNIPEG Planning, Property and Development Department Planning and Land Use Division Unit 15 - 30 Fort Street, Winnipeg, MB, (R3C 4X5)	DESIGNED BY	CHECKED BY	MANAGER, PARK AND OPEN SPACES	DATE	DRAWING TITLE	DRAWING NO.	
	DRAWN BY	APPROVED BY			IG		KING EDWARD AND NESS PLAYGROUND REDEVELOPMENT
	SCALE	1:200		MANAGER, PLANNING AND LAND USE DIVISION	DATE	PROPOSED SITE PLAN	BID OPPORTUNITY NO.
	DATE	05/06/2013					