

NOTES:

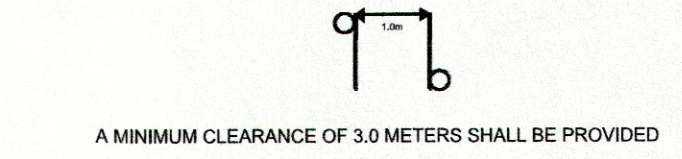
CONSTRUCTION STANDARDS

TO BE CONSTRUCTED IN ACCORDANCE WITH MANITOBA HYDRO DISTRIBUTION AND SUBTRANSMISSION STANDARDS. LATEST REVISION NO MAJOR CHANGE SHALL BE MADE WITHOUT APPROVAL OF THE DESIGN ENGINEER OR DELEGATE.

CITY OF WINNIPEG REQUIREMENTS:

WATER AND WASTE DEPARTMENT APPROVAL SUBJECT TO THE FOLLOWING NOTES:

- A MINIMUM CLEARANCE OF 1000 MILLIMETERS SHALL BE PROVIDED BETWEEN THE UNDERSIDE OF ANY EXISTING WATERMAIN OF SEWERMAIN PIPE AND THE TOP OF THE PROPOSED WORKS OR
A MINIMUM CLEARANCE OF 500 MILLIMETERS SHALL BE PROVIDED BETWEEN THE UNDERSIDE OF THE PROPOSED WORKS AND THE TOP OF ANY EXISTING WATERMAIN OR SEWERMAIN PIPE
A MINIMUM LATERAL CLEARANCE OF 1.0 METER SHALL BE PROVIDED BETWEEN THE NEAREST EDGE OF THE PROPOSED WORKS AND THE NEAREST EDGE OF ANY EXISTING WATERMAIN, WATERMAIN VALVE, HYDRANT, SEWERMAIN OR SEWER MANHOLE.



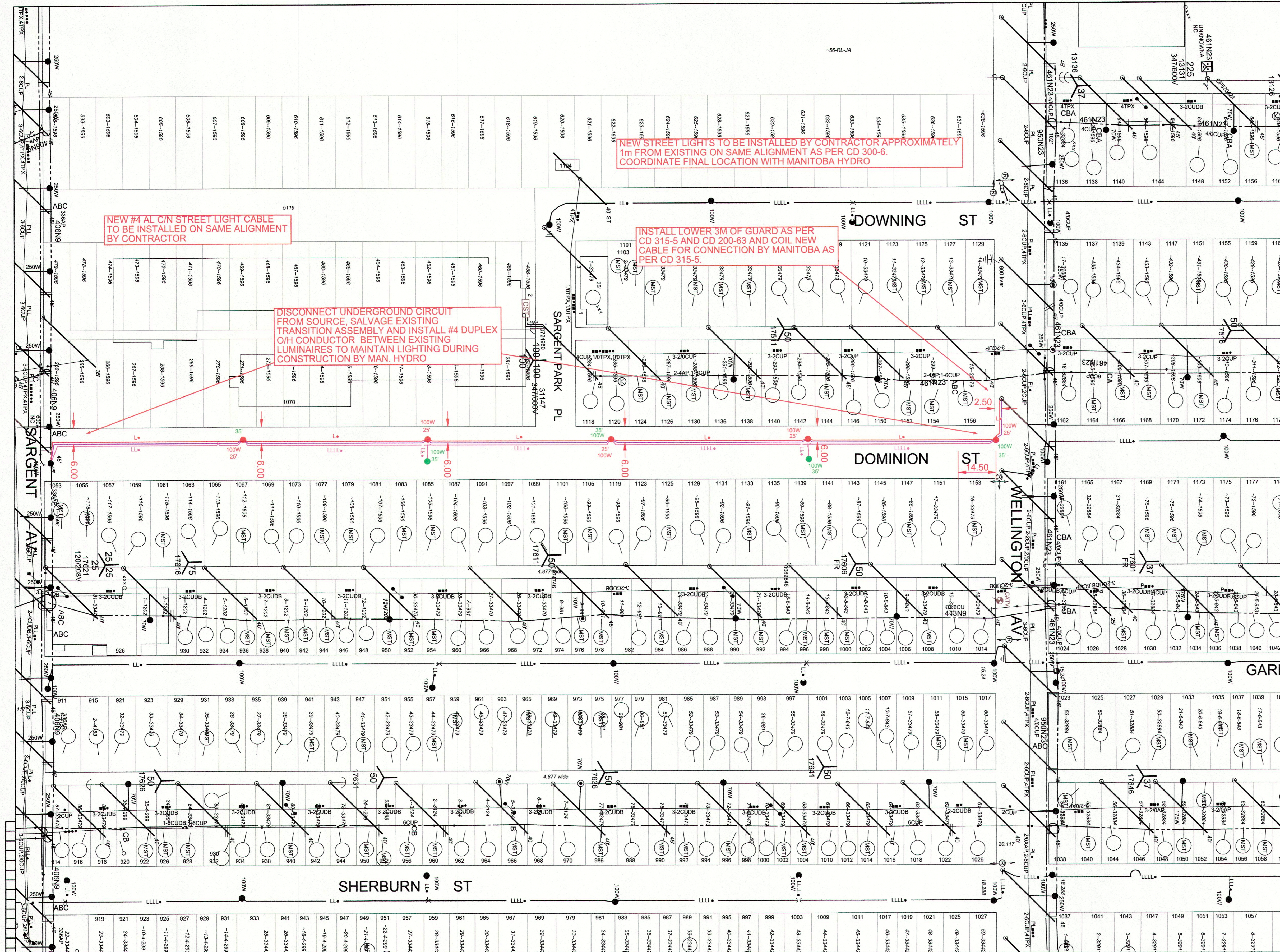
FOR CLEARANCE OF EXISTING WATER & WASTE DEPARTMENT PLANT CONTACT THE SURVEY & INSPECTION BRANCH 48 HOURS PRIOR TO CONSTRUCTION AT 986-3322

PROPOSED SEQUENCE OF CONSTRUCTION:

- ARRANGE FOR TEMPORARY OVERHEAD FEED OF LIGHTS AND DISCONNECTION & ISOLATION OF EXISTING UNDERGROUND STREET LIGHTING CABLE WITHIN WORK AREA
INSTALL NEW UNDERGROUND STREET LIGHTING CABLE AND LEAVE COILED AT LOCATION FOR FINAL CONNECTION BY MANITOBA HYDRO.
ONCE NEW LIGHTS ARE COMMISSIONED AND TEMPORARY OVERHEAD WIRING IS REMOVED, REMOVE EXISTING STREET LIGHTING AND BASES, DISPOSE IN ACCORDANCE WITH TECHNICAL REQUIREMENTS.
COMPLETION OF STREET LIGHTING WORKS SHALL BE COMPLETED PRIOR TO FINAL LANDSCAPING.

Table with 3 columns: CONTACT, NAME, PHONE. Lists project contacts including Design, District Eng Tech, Energy Services Advisor, etc.

PRELIMINARY NOT TO BE USED FOR CONSTRUCTION



NEW STREET LIGHTS TO BE INSTALLED BY CONTRACTOR APPROXIMATELY 1m FROM EXISTING ON SAME ALIGNMENT AS PER CD 300-6. COORDINATE FINAL LOCATION WITH MANITOBA HYDRO

NEW #4 AL C/N STREET LIGHT CABLE TO BE INSTALLED ON SAME ALIGNMENT BY CONTRACTOR

INSTALL LOWER 3M OF GUARD AS PER CD 315-5 AND COIL NEW CABLE FOR CONNECTION BY MANITOBA AS PER CD 315-5.

DISCONNECT UNDERGROUND CIRCUIT FROM SOURCE, SALVAGE EXISTING TRANSITION ASSEMBLY AND INSTALL #4 DUPLEX O/H CONDUCTOR BETWEEN EXISTING LUMINAIRES TO MAINTAIN LIGHTING DURING CONSTRUCTION BY MAN. HYDRO

NOTE: INDICATION OF ALL UNDERGROUND UTILITIES IS FOR ILLUSTRATIVE PURPOSES ONLY. CONTACT THE APPLICABLE UTILITIES FOR SPECIFIC PLANT LOCATIONS AND CLEARANCES.

INFORMATION PERTAINING TO THE SIZE AND LOCATION OF MANITOBA HYDRO FACILITIES AND INSTALLATIONS IS ILLUSTRATIVE AND SHOULD NOT BE RELIED ON FOR THE PURPOSES OF ANY ACTIVITY BEING CONDUCTED AT OR NEAR THE IDENTIFIED HYDRO INSTALLATIONS. ALL LOCATIONS AND EQUIPMENT MUST BE VERIFIED BY APPROPRIATE HYDRO DISTRICT OFFICES PRIOR TO ANY PHYSICAL ACTIVITY UNDERTAKEN AT OR NEAR HYDRO INSTALLATIONS. A CURRENT WORK CLEARANCE REQUEST FORM CAN BE OBTAINED FROM THE DISTRICT OFFICE AND MUST BE ON SITE PRIOR TO THE COMMENCEMENT OF ANY EXCAVATIONS.

CALL BEFORE YOU DIG!!

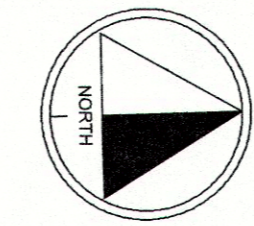


Table with columns: DATE, REVISIONS, BY, CKD, APP. Contains drawing revision history.

Table with columns: AREA NUMBER, STATION NUMBER, FEEDER NUMBER, DRAWING NUMBER, CHECK, SCALE, DATE. Contains project identification and drawing details.