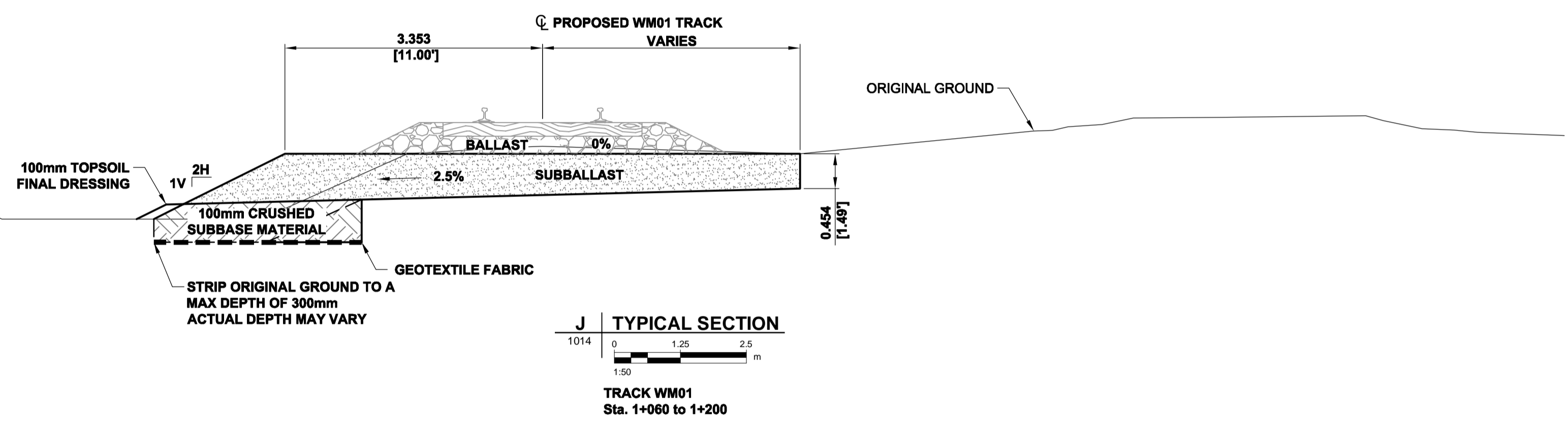
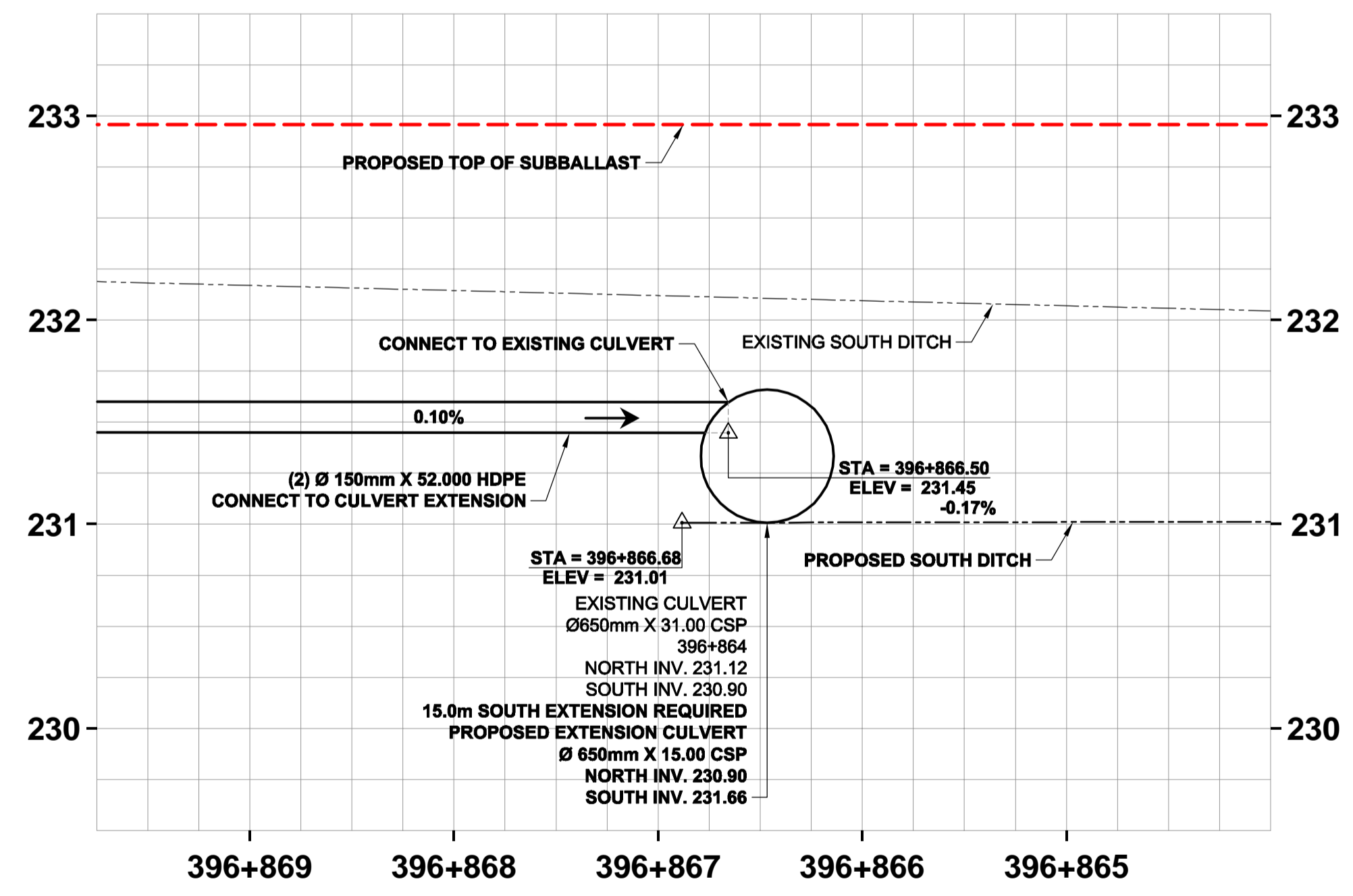


L TYPICAL SECTION
1015
0 1.25 2.5
1:50 m
PLESSIS WEST DITCH



J TYPICAL SECTION
1014
0 1.25 2.5
1:50 m
TRACK WM01
Sta. 1+060 to 1+200



1 DETAIL
1011
0 0.625 1.25
1:25 m
Sub-Drain / Culvert Connection



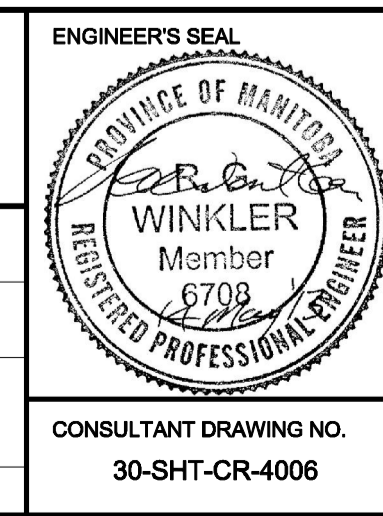
LOCATION APPROVED UNDERGROUND STRUCTURES

SUPV. U/G STRUCTURES COMMITTEE DATE

NOTE:
LOCATION OF UNDERGROUND STRUCTURES AS SHOWN ARE BASED ON THE BEST INFORMATION AVAILABLE. BUT NO GUARANTEE IS GIVEN THAT ALL EXISTING UTILITIES ARE SHOWN OR THAT THE GIVEN LOCATIONS ARE EXACT. CONFIRMATION OF EXISTENCE AND EXACT LOCATION OF ALL SERVICES MUST BE OBTAINED FROM THE INDIVIDUAL UTILITIES BEFORE PROCEEDING WITH CONSTRUCTION.

B.M. ELEV.	NO.	REVISIONS	DATE	BY
	0	Issued For Tender	13/05/14	RCP

		DESIGNED BY: BRP	CHECKED BY: BJM
		DRAWN BY: WD	APPROVED BY: RCP
HOR. SCALE: 1:500		RELEASED FOR CONSTRUCTION BY:	
VERTICAL: 1:50		DATE: 2013/05/14	



THE CITY OF WINNIPEG PUBLIC WORKS DEPARTMENT

PLESSIS ROAD TWINNING AND GRADE SEPARATION AT CN REDDITT SUBDIVISION CONTRACT 1

SHOOFLY AND FINAL EMBANKMENT STANDARD DETAIL TYPICAL SECTIONS

CITY DRAWING NUMBER P-3346-1065
 SHEET 17 OF 27