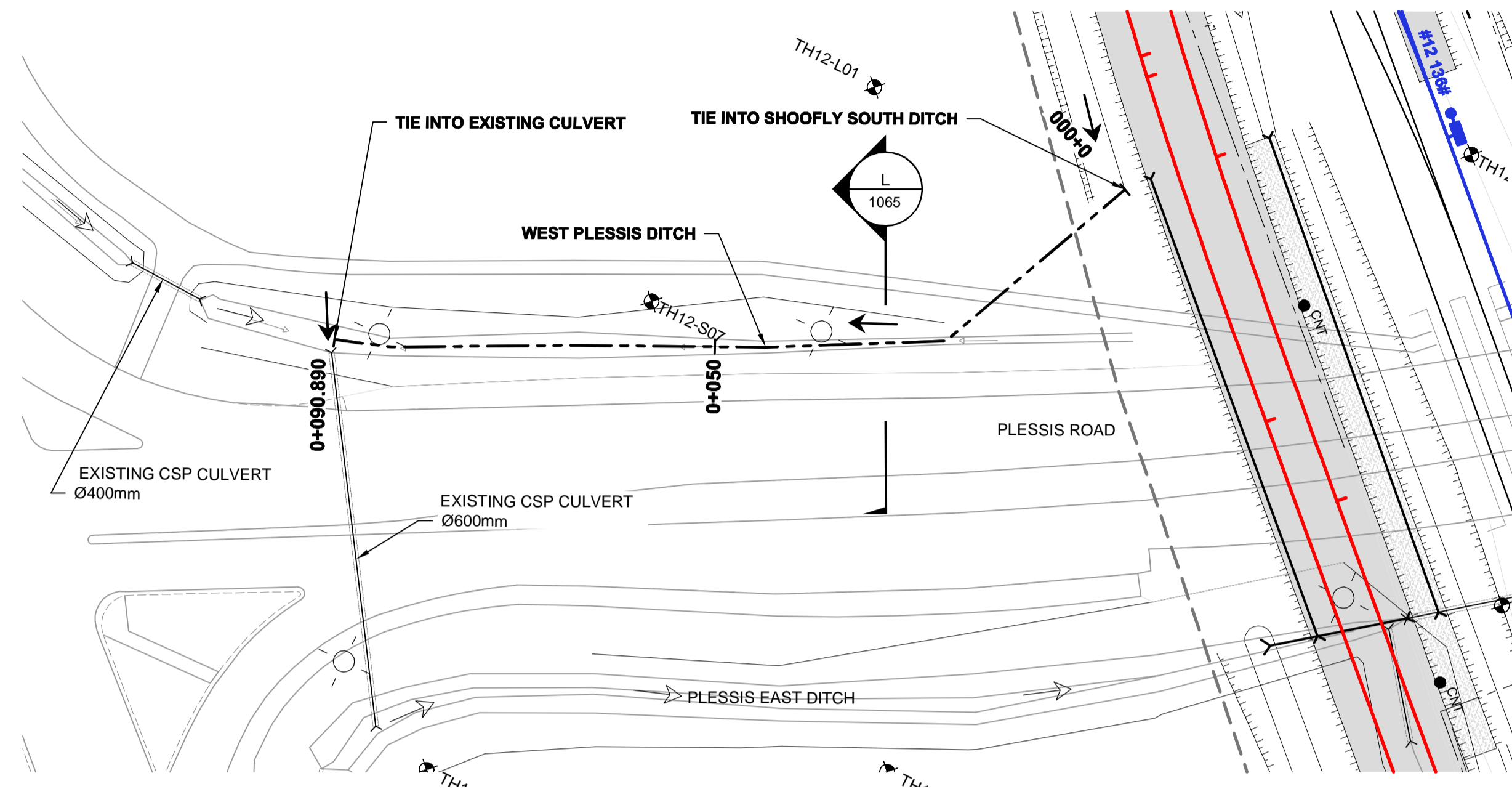
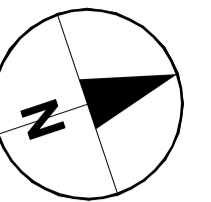
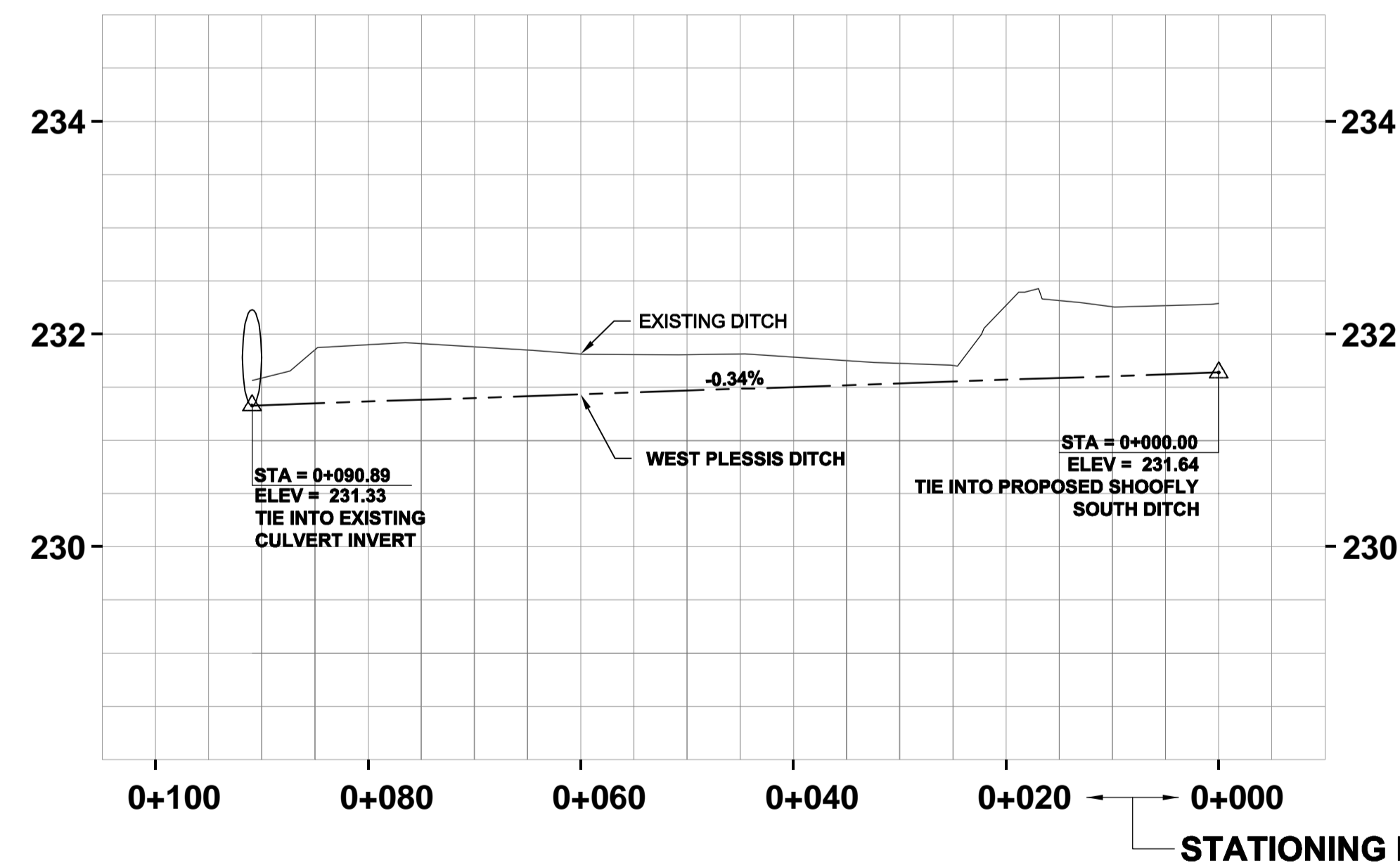
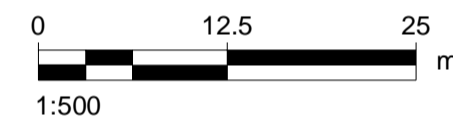


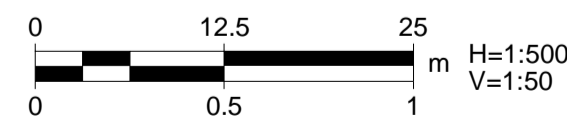
KEY PLAN



PLAN



PROFILE



AECOM
Certificate of Authorization
AECOM Canada Ltd.
No. 4671 Date: MAY 14, 2013

LOCATION APPROVED
UNDERGROUND STRUCTURES

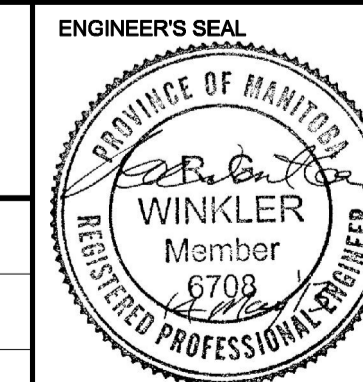
SUPV. U/G STRUCTURES COMMITTEE DATE

NOTE:
LOCATION OF UNDERGROUND STRUCTURES AS SHOWN ARE BASED ON THE BEST INFORMATION AVAILABLE. BUT NO GUARANTEE IS GIVEN THAT ALL EXISTING UTILITIES ARE SHOWN OR THAT THE GIVEN LOCATIONS ARE EXACT. CONFIRMATION OF EXISTENCE AND EXACT LOCATION OF ALL SERVICES MUST BE OBTAINED FROM THE INDIVIDUAL UTILITIES BEFORE PROCEEDING WITH CONSTRUCTION.

B.M. ELEV.	NO.	ISSUED FOR TENDER	DATE	BY
	0	Issued For Tender	13/05/14	RCP
		REVISIONS		



DESIGNED BY	BRP	CHECKED BY	BJM
DRAWN BY	WD	APPROVED BY	RCP
HOR. SCALE:	1:500	RELEASED FOR CONSTRUCTION BY:	
VERTICAL:	1:50	DATE	2013/05/14



CONSULTANT DRAWING NO.
30-SHT-CR-1006



**THE CITY OF WINNIPEG
PUBLIC WORKS DEPARTMENT**

PLESSIS ROAD TWINNING AND GRADE
SEPARATION AT CN REDDITT SUBDIVISION
CONTRACT 1

CITY DRAWING NUMBER
P-3346-1015
SHEET 8 OF 27

WEST PLESSIS DITCH
PLAN AND PROFILE
Sta. 0+000 to Sta. 0+090.89