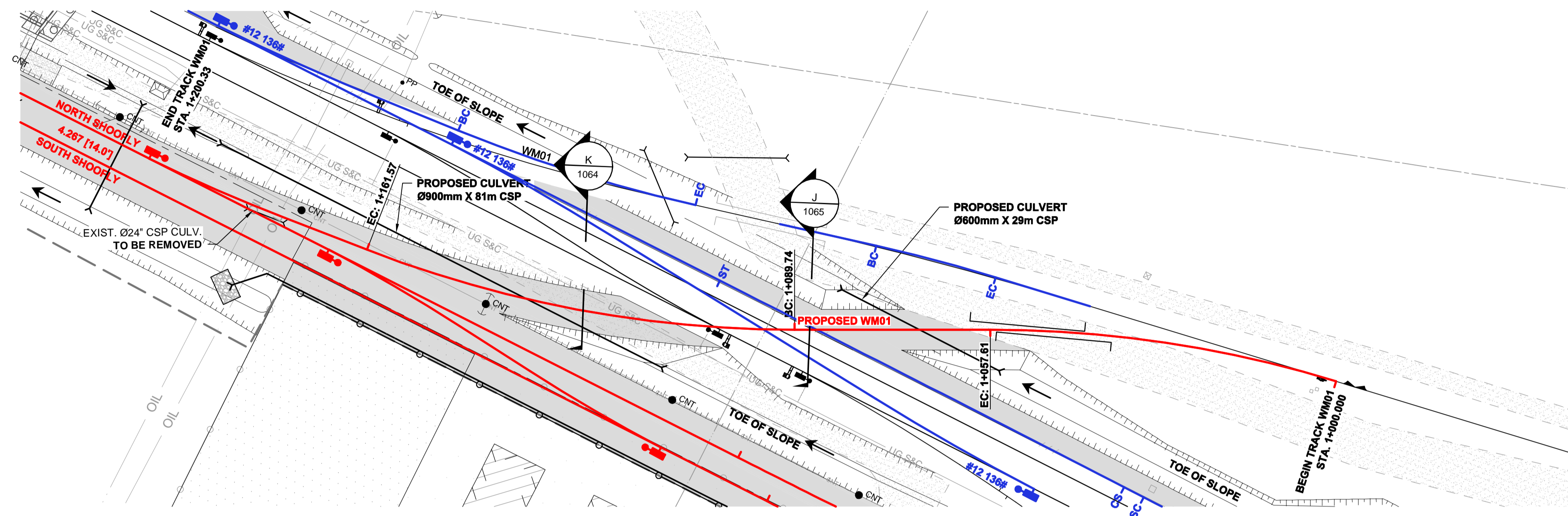
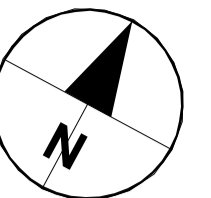
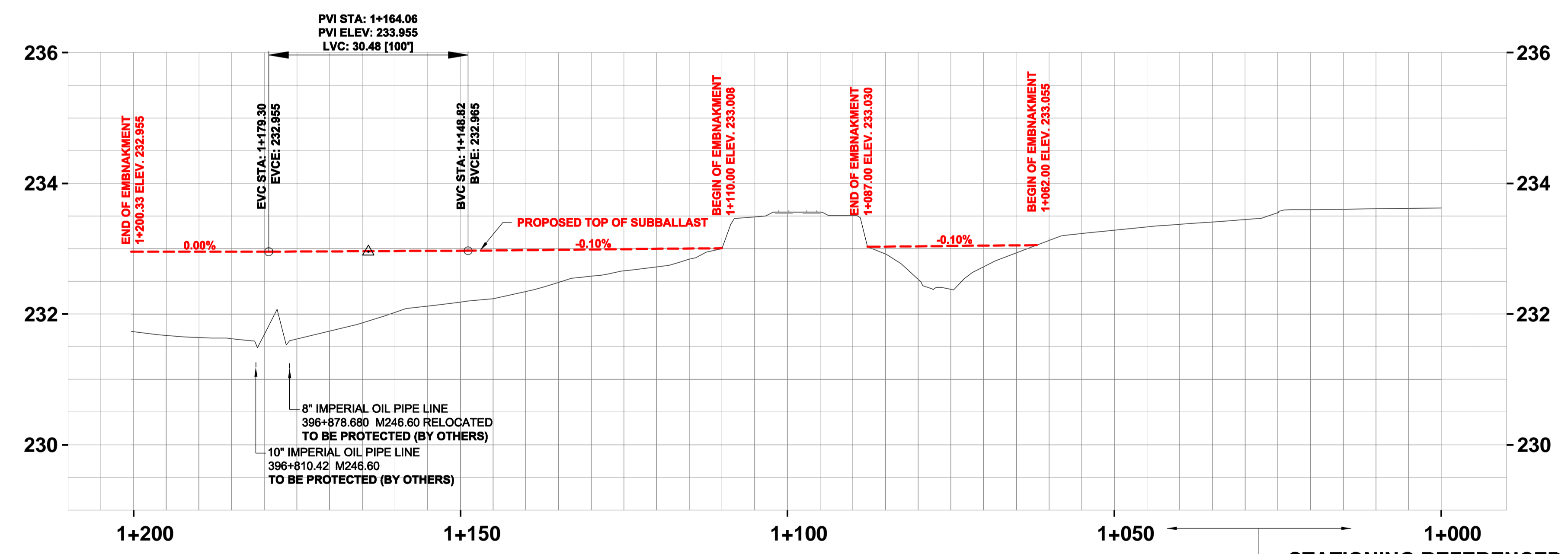
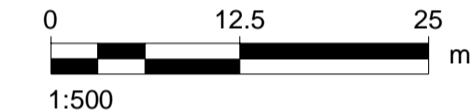


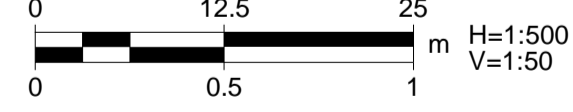
KEY PLAN



PLAN



PROFILE



NOTE:
 • PROPOSED SHOOFLY PROFILE TO MATCH EXISTING SOUTH MAIN TRACK
 • ASSUMED UTILITIES DEPTH ±1m, COVER TO BE CONFIRMED PRIOR TO EXCAVATION

AECOM
 Certificate of Authorization
 AECOM Canada Ltd.
 No. 4671 Date: MAY 14, 2013

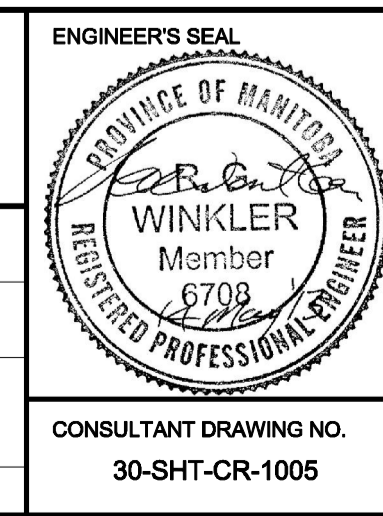
LOCATION APPROVED
 UNDERGROUND STRUCTURES

SUPV. U/G STRUCTURES COMMITTEE DATE

NOTE:
 LOCATION OF UNDERGROUND STRUCTURES AS SHOWN ARE BASED ON THE BEST INFORMATION AVAILABLE. BUT NO GUARANTEE IS GIVEN THAT ALL EXISTING UTILITIES ARE SHOWN OR THAT THE GIVEN LOCATIONS ARE EXACT. CONFIRMATION OF EXISTENCE AND EXACT LOCATION OF ALL SERVICES MUST BE OBTAINED FROM THE INDIVIDUAL UTILITIES BEFORE PROCEEDING WITH CONSTRUCTION.

B.M. ELEV.	NO.	ISSUED FOR TENDER	REVISIONS	DATE	BY
	0	Issued For Tender		13/05/14	RCP

AECOM		DESIGNED BY	BRP	CHECKED BY	BJM
		DRAWN BY	WD	APPROVED BY	RCP
HOR. SCALE:		1:500		RELEASED FOR CONSTRUCTION BY:	
VERTICAL:		1:50		DATE	
CONSULTANT DRAWING NO.		2013/05/14			
30-SHT-CR-1005		DATE			



THE CITY OF WINNIPEG PUBLIC WORKS DEPARTMENT

PLESSIS ROAD TWINNING AND GRADE SEPARATION AT CN REDDITT SUBDIVISION CONTRACT 1

SHOOFLY AND FINAL EMBANKMENT PLAN AND PROFILE
 Sta. 1+100 to Sta. 1+200.33 (TRACK WM01)

CITY DRAWING NUMBER P-3346-1014
 SHEET 7 OF 27