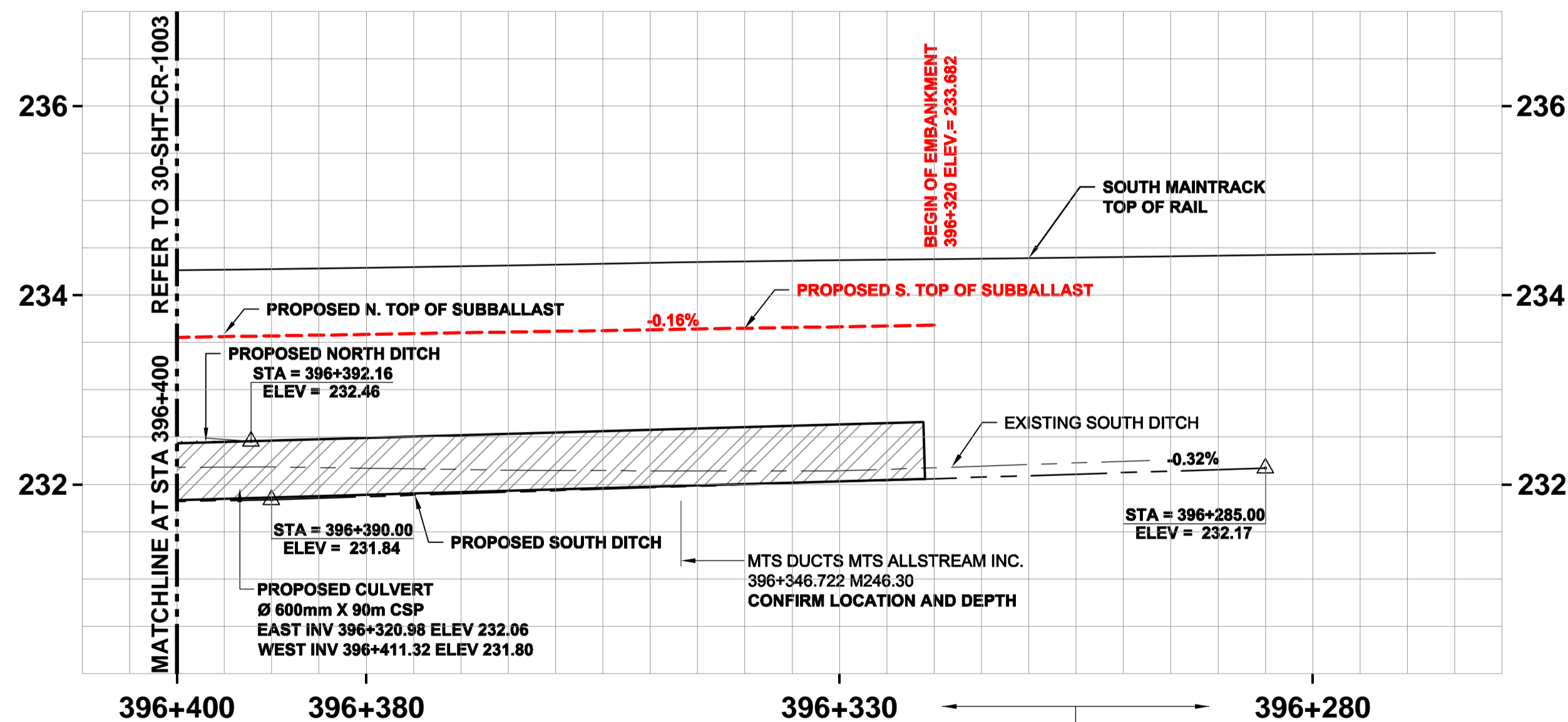
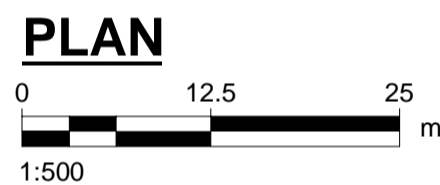


NOTE:  
PROPOSED AND FUTURE TRACKAGE SHOWN AS  
INFORMATION ONLY.

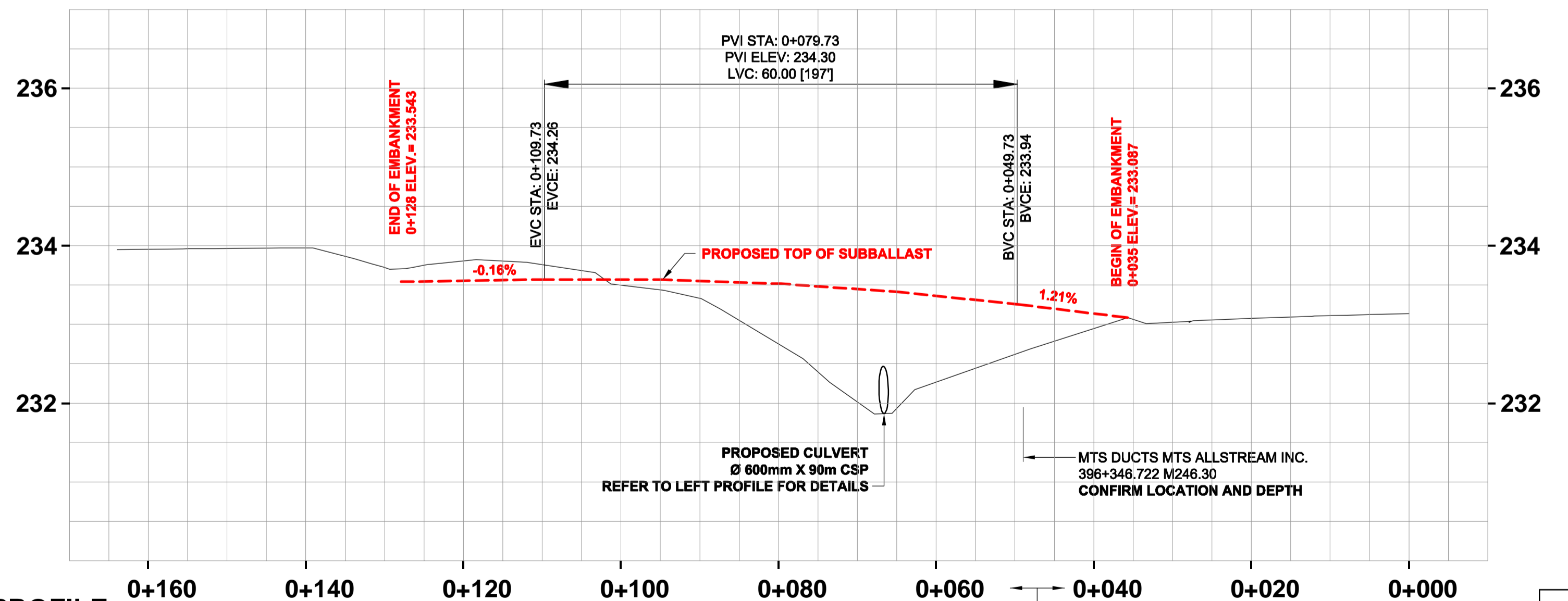
NOTE:  
RAILWAY EQUIPMENT AND FACILITIES TO BE  
PROTECTED DURING CONSTRUCTION.



NOTE:  
• PROPOSED SHOOFLY PROFILE TO MATCH EXISTING SOUTH MAIN TRACK  
• ASSUMED UTILITIES DEPTH ±1m, COVER TO BE CONFIRMED PRIOR TO EXCAVATION

STATIONING REFERENCED  
ALONG SOUTH MAIN TRACK

PROFILE



STATIONING REFERENCED  
ALONG TRACK WU01

**AECOM**  
Certificate of Authorization  
AECOM Canada Ltd.  
No. 4671 Date: MAY 14, 2013

LOCATION APPROVED  
UNDERGROUND STRUCTURES

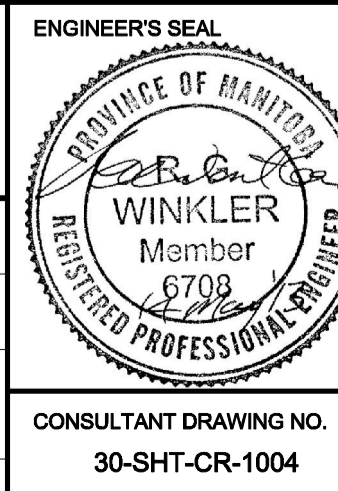
SUPV. U/G STRUCTURES COMMITTEE DATE

NOTE:  
LOCATION OF UNDERGROUND STRUCTURES AS SHOWN ARE BASED ON THE BEST INFORMATION AVAILABLE, BUT NO GUARANTEE IS GIVEN THAT ALL EXISTING UTILITIES ARE SHOWN OR THAT THE GIVEN LOCATIONS ARE EXACT. CONFIRMATION OF EXISTENCE AND EXACT LOCATION OF ALL SERVICES MUST BE OBTAINED FROM THE INDIVIDUAL UTILITIES BEFORE PROCEEDING WITH CONSTRUCTION.

B.M. ELEV.	NO.	ISSUED FOR TENDER	REVISIONS	DATE	BY
	0	Issued For Tender		13/05/14	RCP



DESIGNED BY	BRP	CHECKED BY	BJM
DRAWN BY	WD	APPROVED BY	RCP
HOR. SCALE:	1:500	RELEASED FOR CONSTRUCTION BY:	
VERTICAL:	1:50	DATE	2013/05/14



**THE CITY OF WINNIPEG PUBLIC WORKS DEPARTMENT**

PLESSIS ROAD TWINNING AND GRADE SEPARATION AT CN REDDITT SUBDIVISION CONTRACT 1

SHOOFLY AND FINAL EMBANKMENT PLAN AND PROFILE Sta. 396+280 to Sta. 396+400

CITY DRAWING NUMBER P-3346-1013 SHEET 6 OF 27