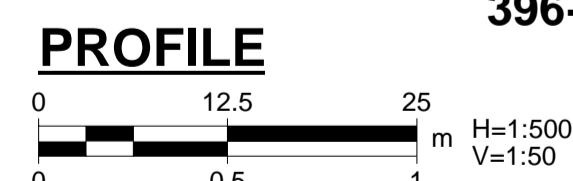
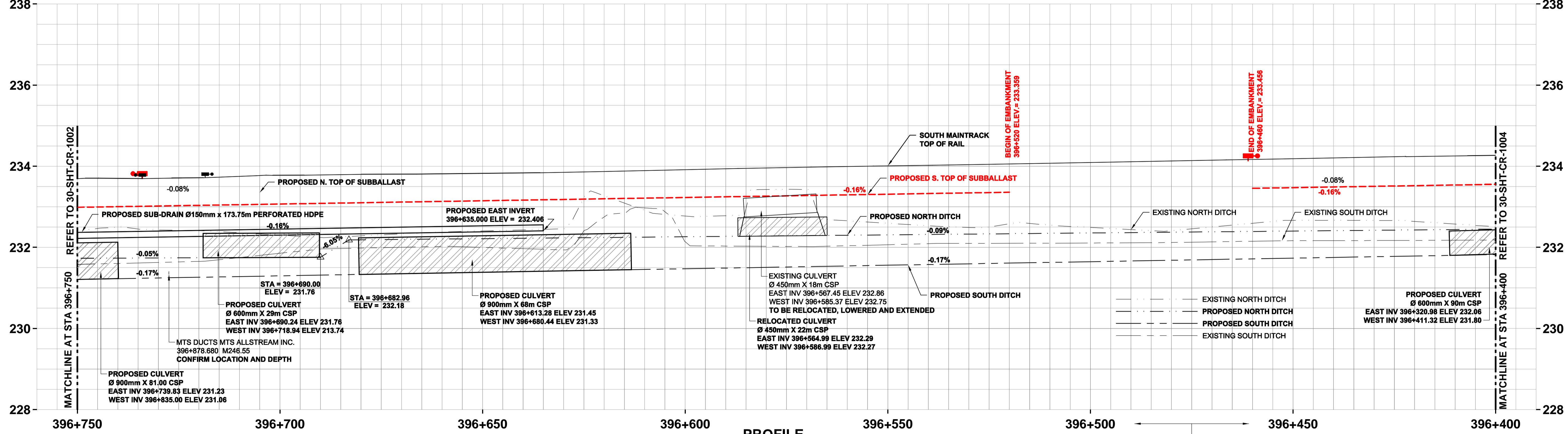


NOTE:
PROPOSED AND FUTURE TRACKAGE SHOWN AS INFORMATION ONLY.

NOTE:
RAILWAY EQUIPMENT AND FACILITIES TO BE PROTECTED DURING CONSTRUCTION.



NOTE:
• PROPOSED SHOOFLY PROFILE TO MATCH EXISTING SOUTH MAIN TRACK
• ASSUMED UTILITIES DEPTH ±1m, COVER TO BE CONFIRMED PRIOR TO EXCAVATION

STATIONING REFERENCED
ALONG SOUTH MAIN TRACK



LOCATION APPROVED UNDERGROUND STRUCTURES

SUPV. U/G STRUCTURES COMMITTEE	DATE

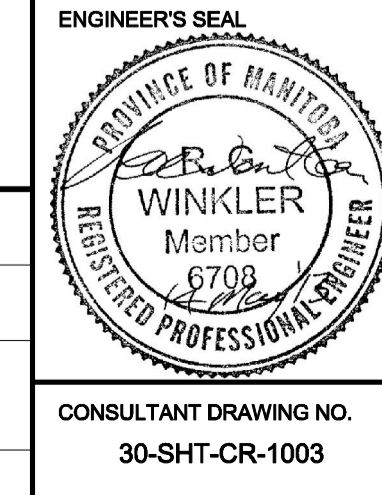
NOTE:
LOCATION OF UNDERGROUND STRUCTURES AS SHOWN ARE BASED ON THE BEST INFORMATION AVAILABLE. BUT NO GUARANTEE IS GIVEN THAT ALL EXISTING UTILITIES ARE SHOWN OR THAT THE GIVEN LOCATIONS ARE EXACT. CONFIRMATION OF EXISTENCE AND EXACT LOCATION OF ALL SERVICES MUST BE OBTAINED FROM THE INDIVIDUAL UTILITIES BEFORE PROCEEDING WITH CONSTRUCTION.

B.M. ELEV.

0	Issued For Tender	13/05/14	RCP
NO.	REVISIONS	DATE	BY

AECOM

DESIGNED BY	BRP	CHECKED BY	BJM
DRAWN BY	WD	APPROVED BY	RCP
HOR. SCALE:	1:500	RELEASED FOR CONSTRUCTION BY:	
VERTICAL:	1:50	DATE	2013/05/14



THE CITY OF WINNIPEG PUBLIC WORKS DEPARTMENT

PLESSIS ROAD TWINNING AND GRADE SEPARATION AT CN REDDITT SUBDIVISION CONTRACT 1

SHOOFLY AND FINAL EMBANKMENT PLAN AND PROFILE Sta. 396+400 to Sta. 396+750

CITY DRAWING NUMBER P-3346-1012 SHEET 5 OF 27