

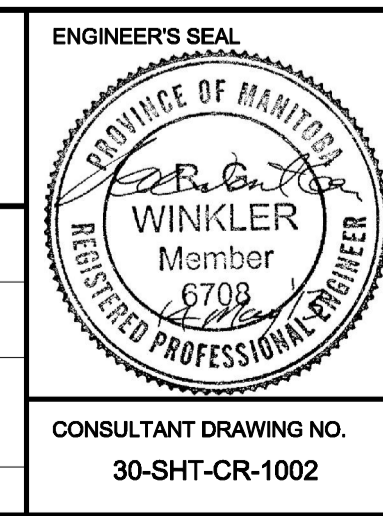
NOTE:  
 • PROPOSED SHOOFLY PROFILE TO MATCH EXISTING SOUTH MAIN TRACK  
 • ASSUMED UTILITIES DEPTH ±1m, COVER TO BE CONFIRMED PRIOR TO EXCAVATION



LOCATION APPROVED UNDERGROUND STRUCTURES	
SUPV. U/G STRUCTURES COMMITTEE	DATE
NOTE: LOCATION OF UNDERGROUND STRUCTURES AS SHOWN ARE BASED ON THE BEST INFORMATION AVAILABLE. BUT NO GUARANTEE IS GIVEN THAT ALL EXISTING UTILITIES ARE SHOWN OR THAT THE GIVEN LOCATIONS ARE EXACT. CONFIRMATION OF EXISTENCE AND EXACT LOCATION OF ALL SERVICES MUST BE OBTAINED FROM THE INDIVIDUAL UTILITIES BEFORE PROCEEDING WITH CONSTRUCTION.	

B.M. ELEV.	
0	Issued For Tender
NO.	REVISIONS
13/05/14	RCP
DATE	BY
2013/05/14	

<b>AECOM</b>	
DESIGNED BY: BRP	CHECKED BY: BJM
DRAWN BY: WD	APPROVED BY: RCP
HOR. SCALE: 1:500	RELEASED FOR CONSTRUCTION BY:
VERTICAL: 1:50	DATE
	2013/05/14



**THE CITY OF WINNIPEG PUBLIC WORKS DEPARTMENT**

PLESSIS ROAD TWINNING AND GRADE SEPARATION AT CN REDDITT SUBDIVISION CONTRACT 1

SHOOFLY AND FINAL EMBANKMENT PLAN AND PROFILE Sta. 396+750 to Sta. 397+100

CITY DRAWING NUMBER P-3346-1011 SHEET 4 OF 27