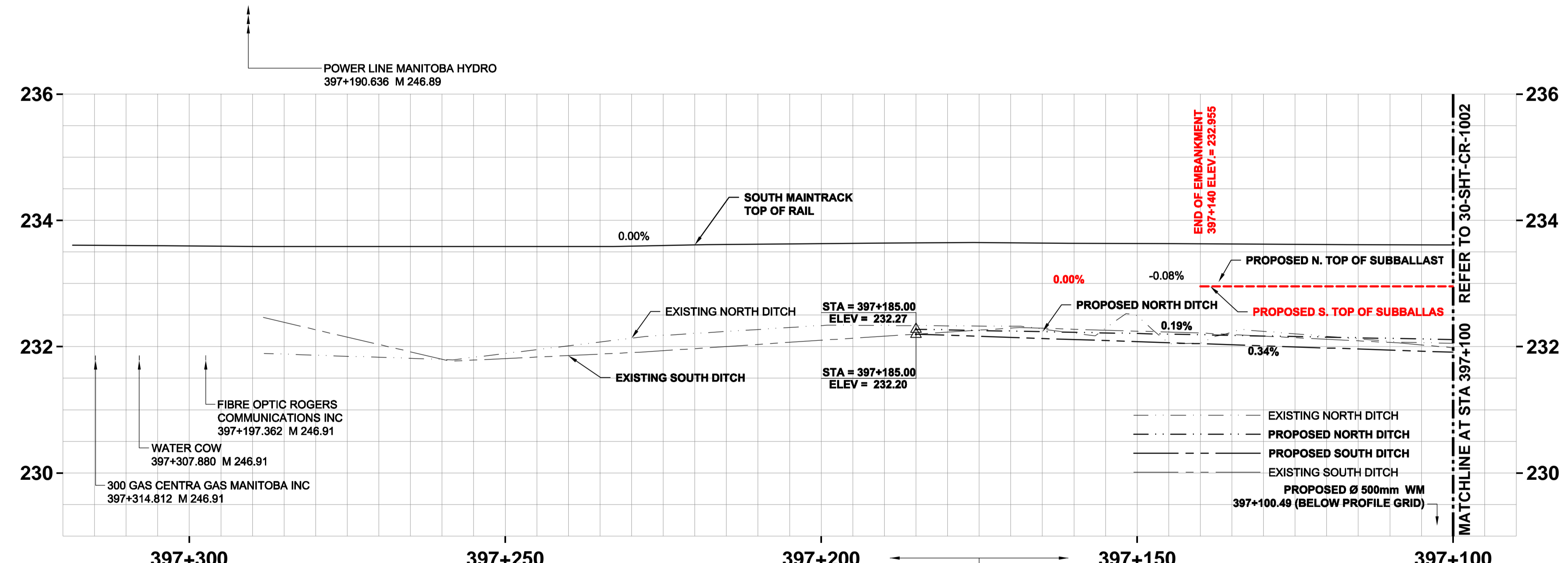
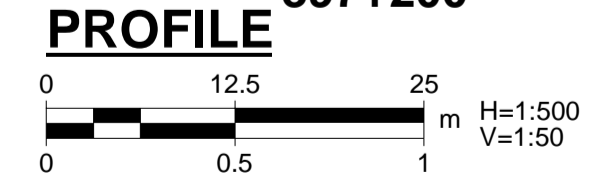


NOTE:
RAILWAY EQUIPMENT AND FACILITIES TO BE
PROTECTED DURING CONSTRUCTION.

NOTE:
PROPOSED AND FUTURE TRACKAGE SHOWN AS
INFORMATION ONLY.



NOTE:
• PROPOSED SHOOFLY PROFILE TO MATCH EXISTING SOUTH MAIN TRACK
• ASSUMED UTILITIES DEPTH ±1m, COVER TO BE CONFIRMED PRIOR TO EXCAVATION



STATIONING REFERENCED
ALONG SOUTH MAIN TRACK



LOCATION APPROVED
UNDERGROUND STRUCTURES

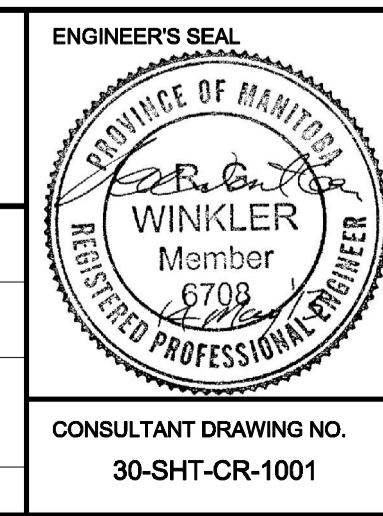
SUPV. U/G STRUCTURES COMMITTEE	DATE

NOTE:
LOCATION OF UNDERGROUND STRUCTURES AS SHOWN ARE BASED ON THE BEST INFORMATION AVAILABLE. BUT NO GUARANTEE IS GIVEN THAT ALL EXISTING UTILITIES ARE SHOWN OR THAT THE GIVEN LOCATIONS ARE EXACT. CONFIRMATION OF EXISTENCE AND EXACT LOCATION OF ALL SERVICES MUST BE OBTAINED FROM THE INDIVIDUAL UTILITIES BEFORE PROCEEDING WITH CONSTRUCTION.

B.M. ELEV.	NO.	ISSUED FOR TENDER	DATE	BY
	0	Issued For Tender	13/05/14	RCP
		REVISIONS		

AECOM

DESIGNED BY: BRP	CHECKED BY: BJM
DRAWN BY: WD	APPROVED BY: RCP
HOR. SCALE: 1:500	RELEASED FOR CONSTRUCTION BY:
VERTICAL: 1:50	
DATE: 2013/05/14	DATE:



**THE CITY OF WINNIPEG
PUBLIC WORKS DEPARTMENT**

PLESSIS ROAD TWINNING AND GRADE
SEPARATION AT CN REDDITT SUBDIVISION
CONTRACT 1

SHOOFLY AND FINAL EMBANKMENT
PLAN AND PROFILE
Sta. 397+100 to Sta. 397+320

CITY DRAWING NUMBER
P-3346-1010
SHEET 3 OF 27