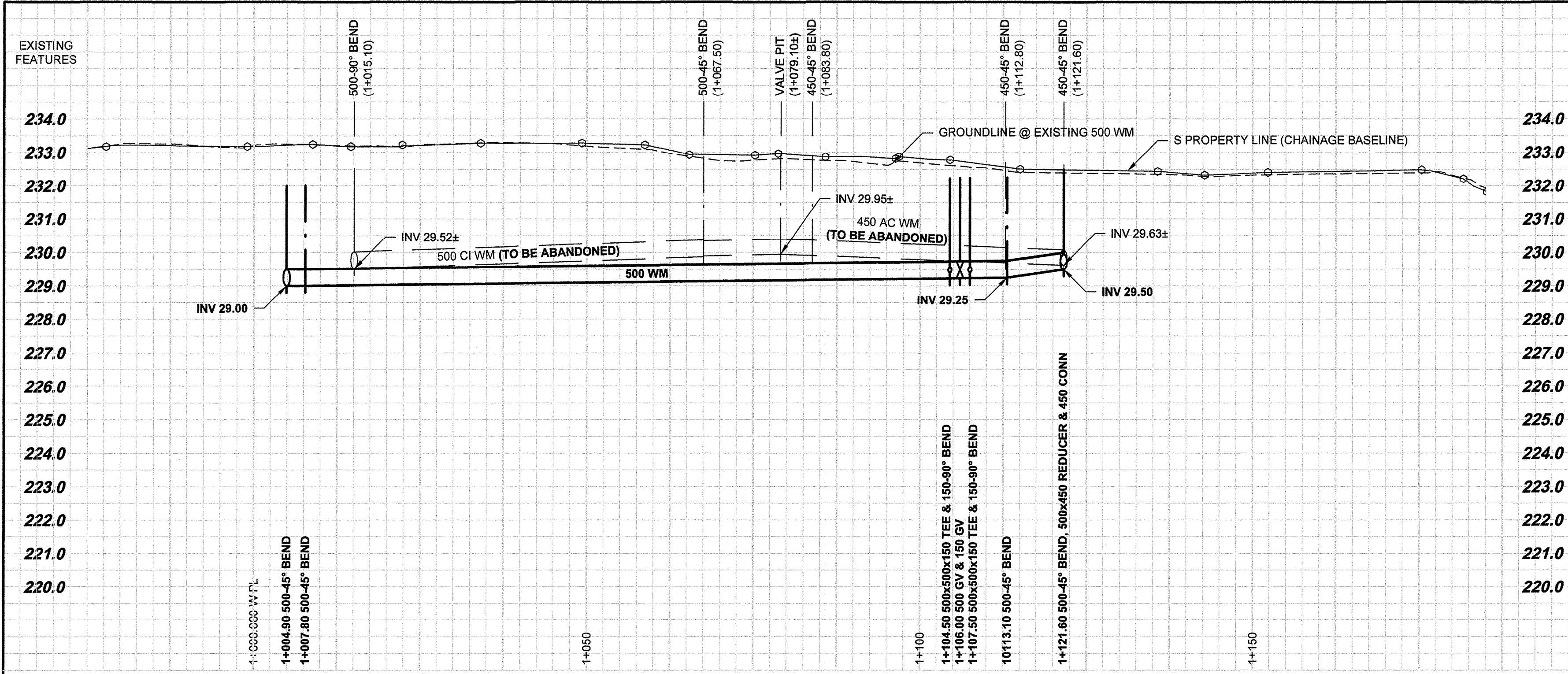
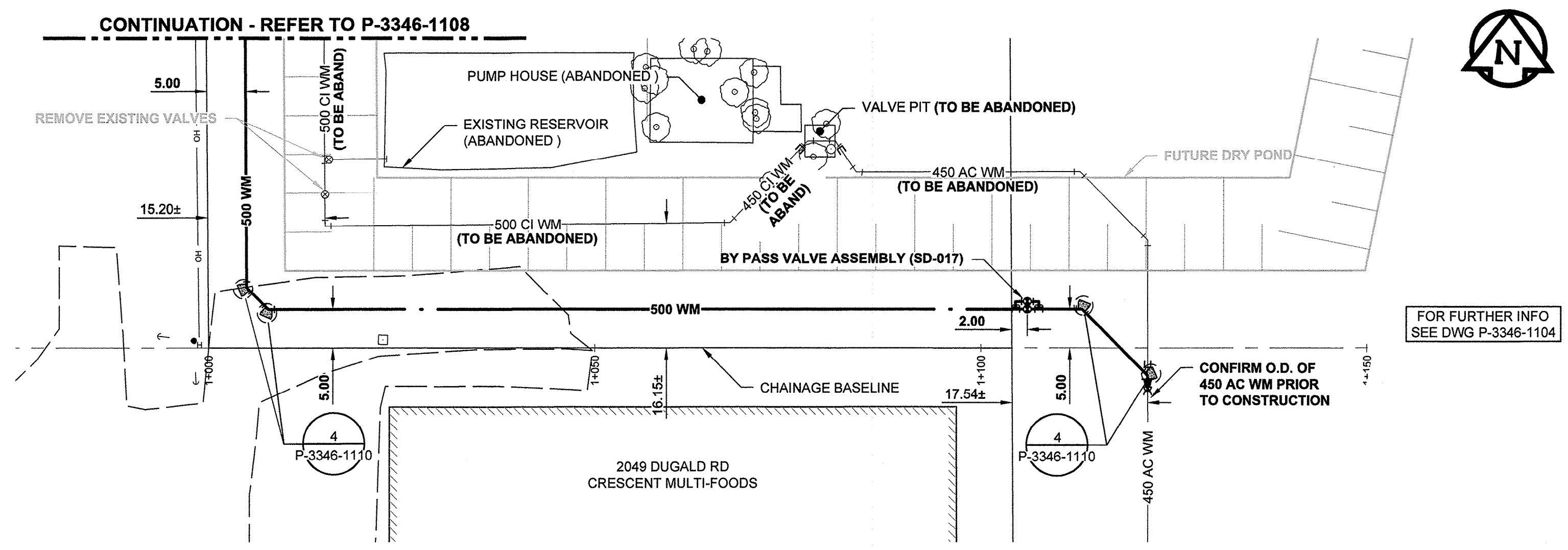


D SIZE 22" x 34" (559mm x 864mm)

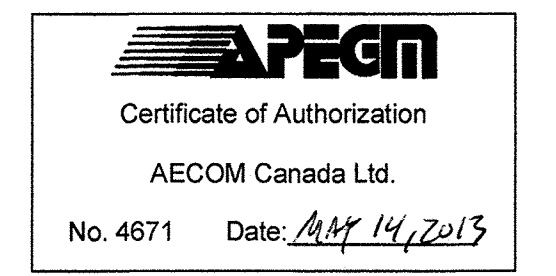
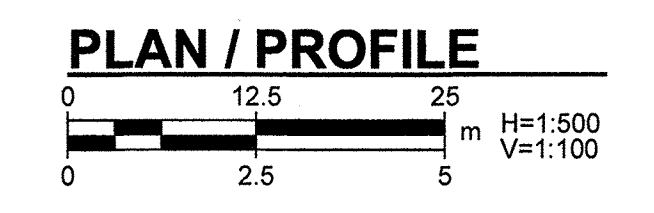


PLOT: 5/14/2013 12:55:19 PM



WARNING
 IF POWER EQUIPMENT OR EXPLOSIVES ARE TO BE USED FOR EXCAVATION ON THIS PROJECT, THE CONTRACTOR MUST:
 1) NOTIFY THE GAS COMPANY OF THE PROPOSED LOCATION OF EXCAVATION.
 2) TAKE PRECAUTION TO AVOID DAMAGE TO GAS COMPANY INSTALLATIONS.
 SEE PROVINCIAL REGULATION 140/92 FOR DETAILS

METRIC
 WHOLE NUMBERS INDICATE MILLIMETRES
 DECIMALIZED NUMBERS INDICATE METRES



150 WM	WATERMAIN	150 WM	CURB STOP	150 WM	WATERMAIN	150 WM
Hydrant	HYDRANT	Hydrant	REDUCER	Hydrant	HYDRANT	Hydrant
Valve	VALVE	Valve	COUPLING	Valve	VALVE	Valve
300 LDS	LAND DRAINAGE SEWER	300 LDS	ANODE	300 LDS	LAND DRAINAGE SEWER	300 LDS
250 WWS	WASTE WATER SEWER	250 WWS	HYDRO	250 WWS	WASTE WATER SEWER	250 WWS
Manhole	MANHOLE	Manhole	MTS	Manhole	MANHOLE	Manhole
Catch Basin	CATCH BASIN	Catch Basin	GAS	Catch Basin	MANHOLE	Manhole
Curb Inlet	CURB INLET	Curb Inlet	TESTHOLE	Curb Inlet	MANHOLE	Manhole
Culvert	CULVERT	Culvert	LAMP STANDARD	Curb Inlet	MANHOLE	Manhole
Pipe Abandonments	PIPE ABANDONMENTS	Pipe Abandonments	TREE	Curb Inlet	MANHOLE	Manhole
Survey Bar	SURVEY BAR	Survey Bar		Curb Inlet	MANHOLE	Manhole
EXISTING	LEGEND - PLAN	NEW	LEGEND - PLAN	NEW	EXISTING	LEGEND - PROFILE

LOCATION APPROVED
 UNDERGROUND STRUCTURES

SUPR. U/G STRUCTURES DATE COMMITTEE

NOTE:
 LOCATION OF UNDERGROUND STRUCTURES AS SHOWN ARE BASED ON THE BEST INFORMATION AVAILABLE. BUT NO GUARANTEE IS GIVEN THAT ALL EXISTING UTILITIES ARE SHOWN OR THAT THE GIVEN LOCATIONS ARE EXACT. CONFIRMATION OF EXISTENCE AND EXACT LOCATION OF ALL SERVICES MUST BE OBTAINED FROM THE INDIVIDUAL UTILITIES BEFORE PROCEEDING WITH CONSTRUCTION.

0	ISSUED FOR TENDER	13/05/14	ADL
NO.	REVISIONS	YYMMDD	BY

AECOM

DESIGNED BY	JAT	CHECKED BY	[Signature]
DRAWN BY	ADL	APPROVED BY	[Signature]
HOR. SCALE	1:500	RELEASED FOR CONSTRUCTION	[Signature]
VERT. SCALE	1:100	DATE	



THE CITY OF WINNIPEG
 PUBLIC WORKS DEPARTMENT

PLESSIS ROAD TWINNING AND GRADE SEPARATION AT CN REDDITT SUBDIVISION CONTRACT 1

EXISTING 500 WATERMAIN RENEWAL
 55m NORTH OF DUGALD ROAD
 170m WEST OF PLESSIS ROAD TO 50m WEST OF PLESSIS ROAD

CITY DRAWING NUMBER	P-3346-1109
SHEET	25 OF 27
CONSULTANT DWG No.	REV
C-0006	0

BID OPPORTUNITY NO. 342-2013

AECOM REVIEW DRAFT CHK

AECOM FILE NAME: 60273041-SHT-01-Cont1-C-0006.dwg Saved By: leppia