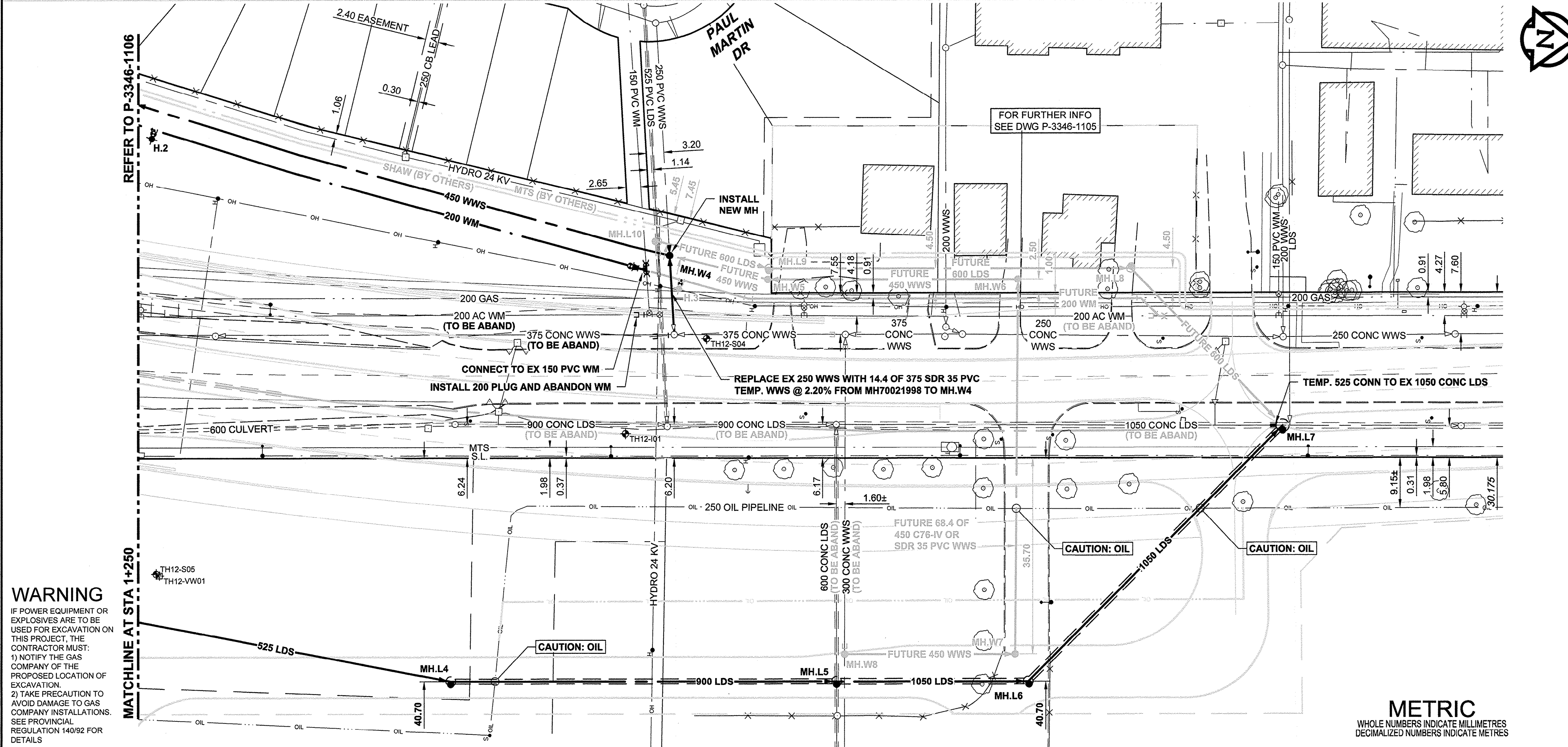
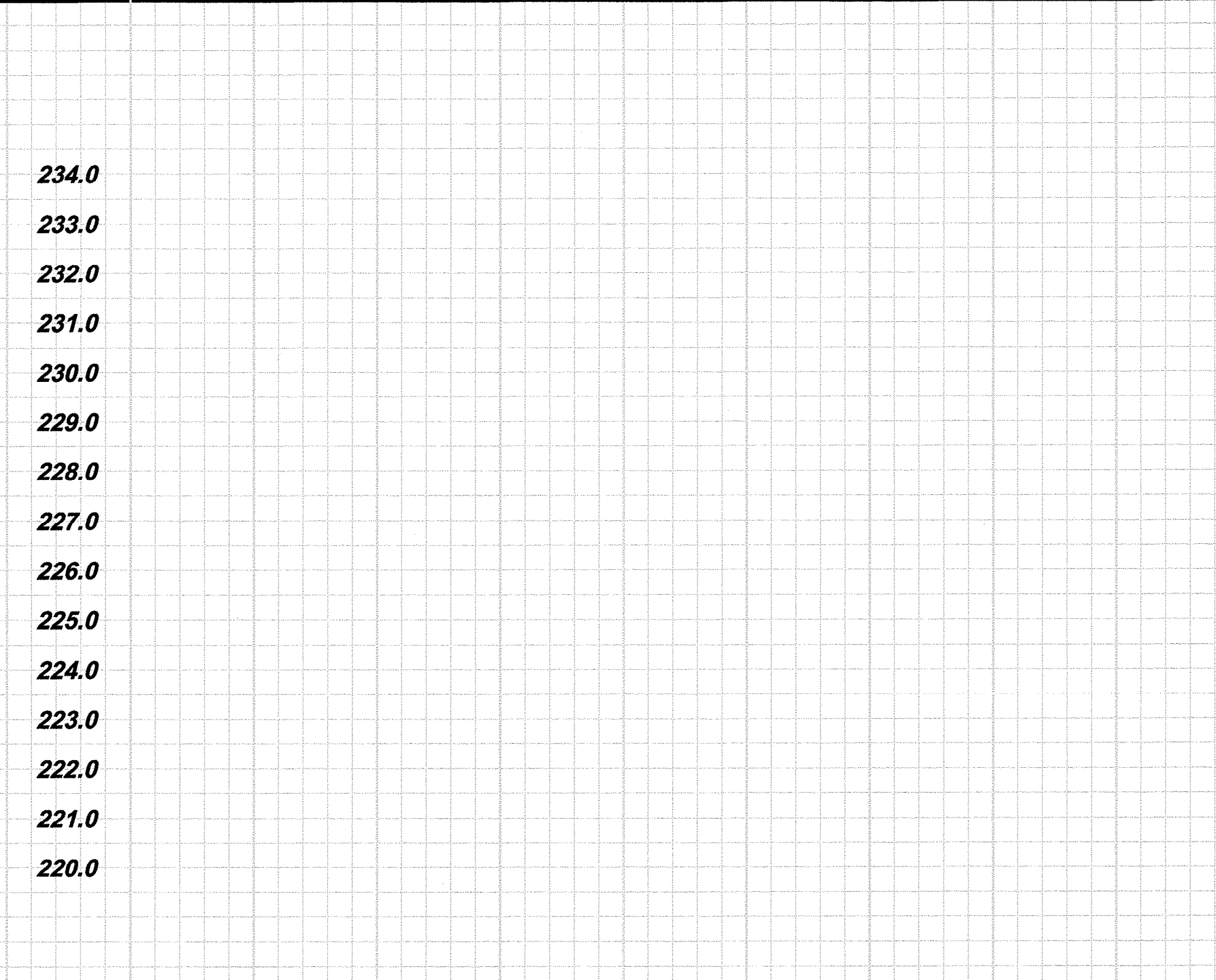
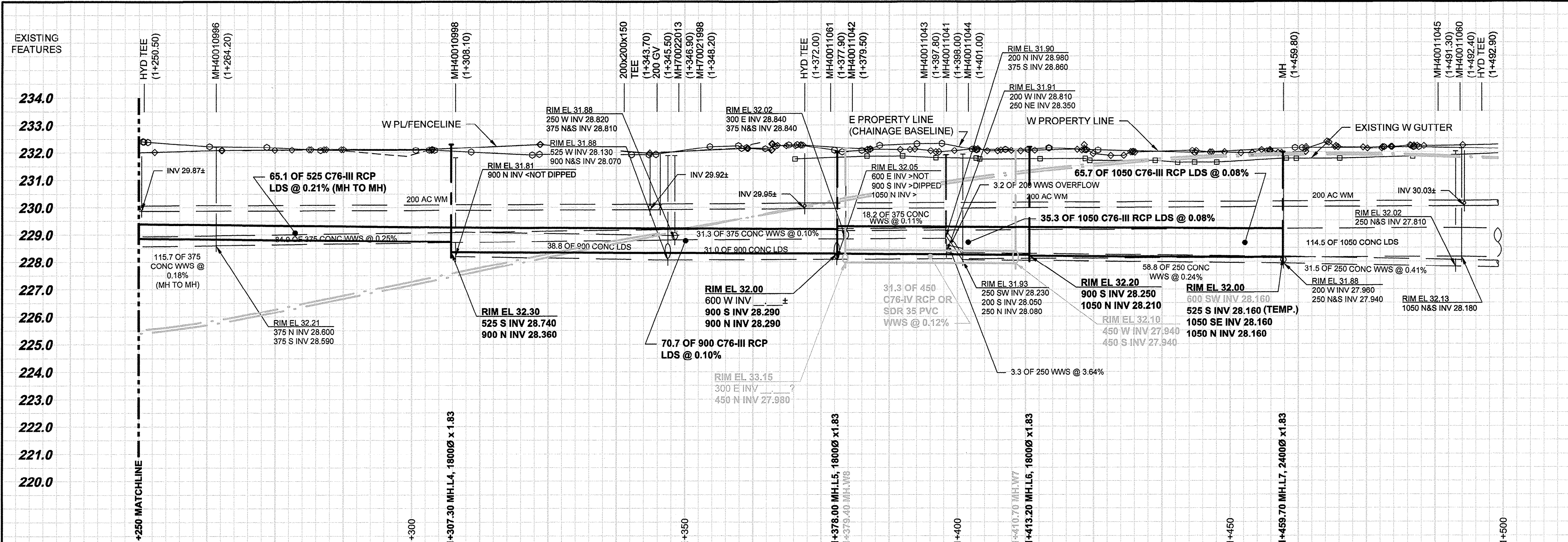


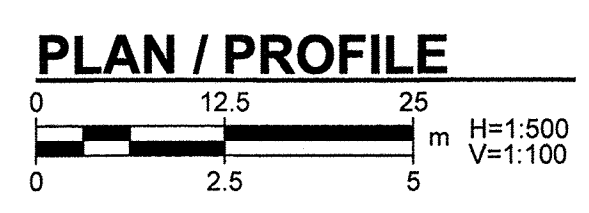
D SIZE 22" x 34" (559mm x 864mm)

PLOT: 5/14/2013 3:20:39 PM

AECOM REVIEW DRFT CHK AECOM FILE NAME: 60273041-SHT-01-Cont1-C-0001 C-0004.dwg Saved By: leipia



WARNING
 IF POWER EQUIPMENT OR EXPLOSIVES ARE TO BE USED FOR EXCAVATION ON THIS PROJECT, THE CONTRACTOR MUST:
 1) NOTIFY THE GAS COMPANY OF THE PROPOSED LOCATION OF EXCAVATION.
 2) TAKE PRECAUTION TO AVOID DAMAGE TO GAS COMPANY INSTALLATIONS. SEE PROVINCIAL REGULATION 140/92 FOR DETAILS



AECOM
 Certificate of Authorization
 AECOM Canada Ltd.
 No. 4671 Date: *Mar 14, 2013*

BID OPPORTUNITY NO. 342-2013

| | | | | | | |
|----------|---------------------|-------------|------------|------------------|-------------------|-------------|
| 150 WM | WATERMAIN | 150 WM | CURB STOP | 150 WM | WATERMAIN | 150 WM |
| HYDRANT | REDUCER | COUPLING | ANODE | HYDRO | M/S | CATCH BASIN |
| VALVE | MANHOLE | CATCH BASIN | CURB INLET | CULVERT | PIPE ABANDONMENTS | SURVEY BAR |
| 300 LDS | LAND DRAINAGE SEWER | 300 LDS | 250 WWS | 250 WWS | 250 WWS | 250 WWS |
| 250 WWS | WASTE WATER SEWER | 250 WWS | 250 WWS | 250 WWS | 250 WWS | 250 WWS |
| EXISTING | LEGEND - PLAN | NEW | EXISTING | LEGEND - PROFILE | NEW | EXISTING |

LOCATION APPROVED
 UNDERGROUND STRUCTURES

| | |
|----------------------|--|
| SUPR. U/G STRUCTURES | DATE |
| NOTE: | LOCATION OF UNDERGROUND STRUCTURES AS SHOWN ARE BASED ON THE BEST INFORMATION AVAILABLE. BUT NO GUARANTEE IS GIVEN THAT ALL EXISTING UTILITIES ARE SHOWN OR THAT THE GIVEN LOCATIONS ARE EXACT. CONFIRMATION OF EXISTENCE AND EXACT LOCATION OF ALL SERVICES MUST BE OBTAINED FROM THE INDIVIDUAL UTILITIES BEFORE PROCEEDING WITH CONSTRUCTION. |

| | | | |
|-----|-------------------|----------|-----|
| 0 | ISSUED FOR TENDER | 13/05/14 | ADL |
| NO. | REVISIONS | YYMMDD | BY |

AECOM

DESIGNED BY: JAT
 CHECKED BY: [Signature]
 DRAWN BY: ADL
 APPROVED BY: [Signature]
 HOR. SCALE: 1:500
 VERT. SCALE: 1:100
 RELEASED FOR CONSTRUCTION

PROFESSIONAL'S SEAL
 PROVINCE OF MANITOBA
 D.M.R. ENNS
 Member
 31777
 Registered Professional Engineer
 CONSULTANT DRAWING NO.
 60273041-SHT-01-Cont1-C-0001-C-0004

THE CITY OF WINNIPEG
 PUBLIC WORKS DEPARTMENT

PLESSIS ROAD TWINNING AND GRADE SEPARATION AT CN REDDITT SUBDIVISION
 CONTRACT 1
 PLESSIS ROAD - LDS
 205m NORTH OF DUGALD ROAD
 TO 100m SOUTH OF KERNAGHAN AVENUE

CITY DRAWING NUMBER: P-3346-1107
 SHEET: 23 OF 27
 CONSULTANT DWG No. REV: C-0004 0