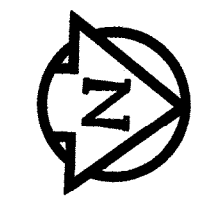
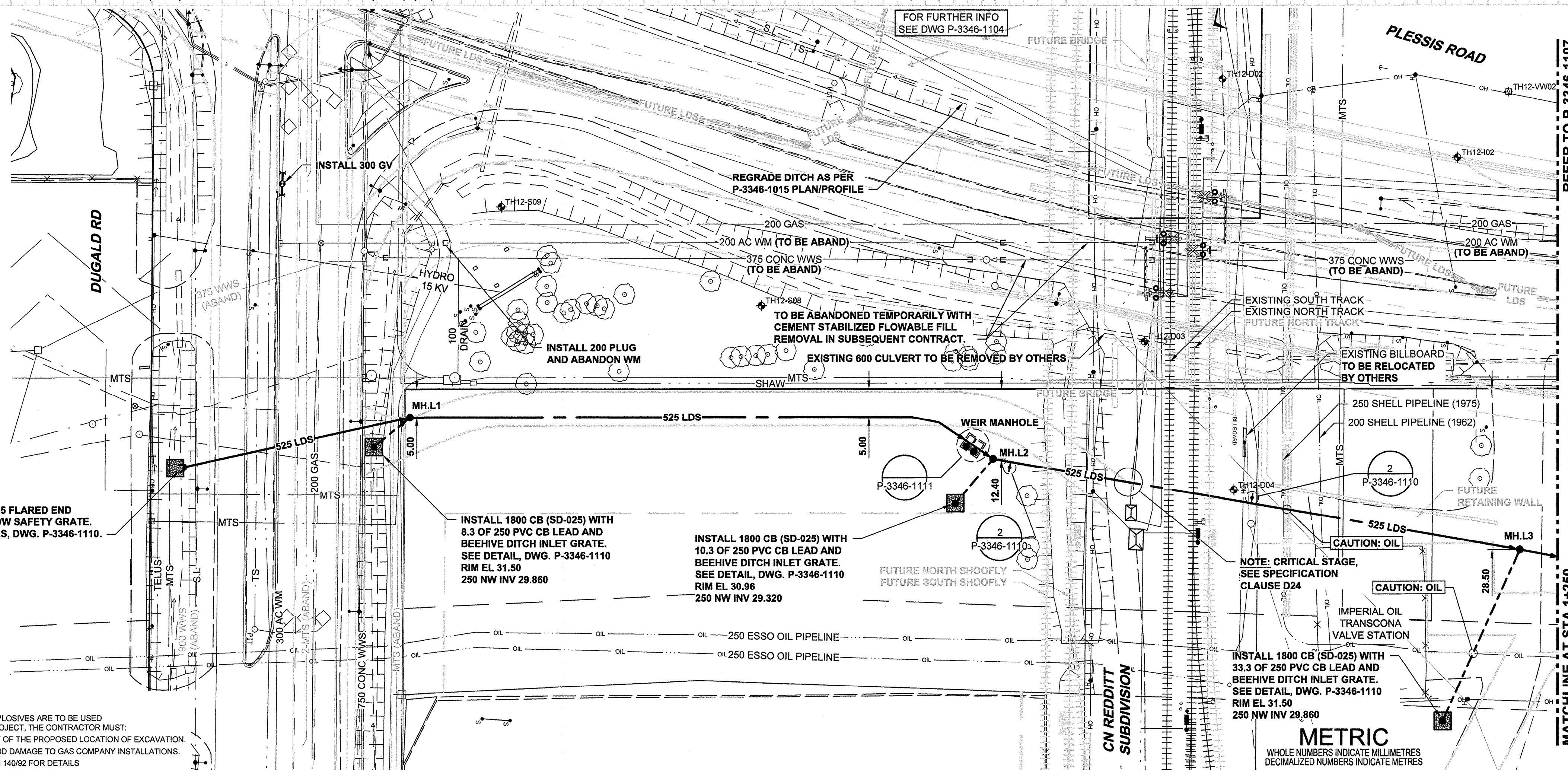


EXISTING FEATURES
234.0
233.0
232.0
231.0
230.0
229.0
228.0
227.0
226.0
225.0
224.0
223.0
222.0
221.0
220.0

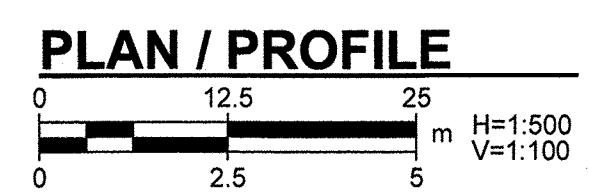
234.0
233.0
232.0
231.0
230.0
229.0
228.0
227.0
226.0
225.0
224.0
223.0
222.0
221.0
220.0

RAIL CROSSING NOTES:	
RAILWAY MILEAGE AND SUBDIVISION:	MAIN LINE - REDDITT SUBDIVISION - MILE 246.61
MUNICIPAL DESCRIPTION OF ADJACENT PROPERTIES:	PLESSIS ROAD CITY OF WINNIPEG, WATER AND WASTE DEPARTMENT
NAME OF PIPELINE OWNER:	LAND DRAINAGE SEWER NON-SURCHARGED GRAVITY NA
CONTENTS TO BE HANDLED:	ATMOSPHERIC NA
MAXIMUM OPERATING PRESSURE:	NA
MAXIMUM SURGE AND TEST PRESSURE:	NA
MAXIMUM OPERATING TEMPERATURE:	NA
MINIMUM OPERATING TEMPERATURE:	NA
PIPING MATERIALS:	CARRIER 525 mm
NOMINAL DIAMETER:	711 mm
OUTSIDE DIAMETER:	REINFORCED CONCRETE
MATERIAL SPECIFICATION AND GRADE:	ASTM C78 CLASS 5
WALL THICKNESS:	89 mm
TYPE OF JOINT:	RUBBER GASKET BELL AND SPIGOT
COATING:	NA
LOCATION OF SHUT OFF VALVES:	NA
METHOD OF INSTALLATION:	TRENCHLESS - CONCRETE PIPE TO BE JACKED WITH NO SOIL REMOVAL AHEAD OF PIPE
VENTS:	NA NUMBER: NA
SEALS:	HEIGHT ABOVE GROUND: NA
BURY:	BOTH ENDS: NA
	TYPE: NA
	BASE OF RAIL TO TOP OF CARRIER: 4.1 m
	NOT BENEATH TRACKS: 3.1 m
	ROADWAY DITCHES: 2.1 m
	BASE OF RAIL TO BOTTOM OF JACKING/RECEIVING PITS: 5.1 m
EXTENT OF CASING MEASURED PERPENDICULAR TO CENTERLINE OF TRACK:	NA
ANGLE OF PIPE / TRACK CROSSING:	80°40'
DIRECTION OF FLOW:	NA
CENTERLINE OF TRACK TO FACE OF JACKING/RECEIVING PITS:	10.0m
TYPE, SIZE, AND SPACING OF INSULATORS OR SUPPORTS:	NA
CATHODIC PROTECTION:	NA
GEOTECHNICAL BOREHOLES:	SEE PROFILE
SOIL TYPE:	CLAY/SILT
BASE OF RAIL TO GROUND WATER:	10.4m - 11.5m
TO BE CONSTRUCTED AND MAINTAINED IN ACCORDANCE WITH TC E-10	



REFER TO P-3346-1107
MATCHLINE AT STA 1+250

WARNING
IF POWER EQUIPMENT OR EXPLOSIVES ARE TO BE USED FOR EXCAVATION ON THIS PROJECT, THE CONTRACTOR MUST:
1) NOTIFY THE GAS COMPANY OF THE PROPOSED LOCATION OF EXCAVATION.
2) TAKE PRECAUTION TO AVOID DAMAGE TO GAS COMPANY INSTALLATIONS.
SEE PROVINCIAL REGULATION 140/92 FOR DETAILS



APEGM
Certificate of Authorization
AECOM Canada Ltd.
No. 4671 Date: May 14, 2013

BID OPPORTUNITY NO. 342-2013

EXISTING	LEGEND - PLAN	NEW	EXISTING	LEGEND - PLAN	NEW	EXISTING	LEGEND - PROFILE	NEW
150 WM	WATERMAIN	150 WM	CURB STOP	150 WM	WATERMAIN	150 WM	WATERMAIN	150 WM
HYDRANT	REDUCER	HYDRANT	COUPLING	HYDRANT	REDUCER	HYDRANT	HYDRANT	HYDRANT
VALVE	VALVE	VALVE	ANODE	VALVE	VALVE	VALVE	VALVE	VALVE
300 LDS	LAND DRAINAGE SEWER	300 LDS	HYDRO	300 LDS	LAND DRAINAGE SEWER	300 LDS	LAND DRAINAGE SEWER	300 LDS
250 WWS	WASTE WATER SEWER	250 WWS	MTS	250 WWS	WASTE WATER SEWER	250 WWS	WASTE WATER SEWER	250 WWS
MANHOLE	MANHOLE	MANHOLE	GAS	MANHOLE	MANHOLE	MANHOLE	MANHOLE	MANHOLE
CATCH BASIN	CATCH BASIN	CATCH BASIN	TESTHOLE	CATCH BASIN	CATCH BASIN	CATCH BASIN	CATCH BASIN	CATCH BASIN
CURB INLET	CURB INLET	CURB INLET	LAMP STANDARD	CURB INLET	CURB INLET	CURB INLET	CURB INLET	CURB INLET
CULVERT	CULVERT	CULVERT	TREE	CULVERT	CULVERT	CULVERT	CULVERT	CULVERT
PIPE ABANDONMENTS	PIPE ABANDONMENTS	PIPE ABANDONMENTS		PIPE ABANDONMENTS	PIPE ABANDONMENTS	PIPE ABANDONMENTS	PIPE ABANDONMENTS	PIPE ABANDONMENTS
SURVEY BAR	SURVEY BAR	SURVEY BAR		SURVEY BAR	SURVEY BAR	SURVEY BAR	SURVEY BAR	SURVEY BAR

LOCATION APPROVED
UNDERGROUND STRUCTURES

SUPR. U/G STRUCTURES COMMITTEE DATE

NOTE: LOCATION OF UNDERGROUND STRUCTURES AS SHOWN ARE BASED ON THE BEST INFORMATION AVAILABLE. BUT NO GUARANTEE IS GIVEN THAT ALL EXISTING UTILITIES ARE SHOWN OR THAT THE GIVEN LOCATIONS ARE EXACT. CONFIRMATION OF EXISTENCE AND EXACT LOCATION OF ALL SERVICES MUST BE OBTAINED FROM THE INDIVIDUAL UTILITIES BEFORE PROCEEDING WITH CONSTRUCTION.

AECOM

DESIGNED BY: JAT
CHECKED BY: [Signature]
DRAWN BY: ADL
APPROVED BY: [Signature]
HOR. SCALE: 1:500
VERT. SCALE: 1:100

PROFESSIONAL'S SEAL
PROVINCE OF MANITOBA
D.M.R. ENNS
Member 31777
REGISTERED PROFESSIONAL ENGINEER
CONSULTANT DRAWING NO. 60273041-SHT-01-CON1-C-0001_C-0004

THE CITY OF WINNIPEG PUBLIC WORKS DEPARTMENT

PLESSIS ROAD TWINNING AND GRADE SEPARATION AT CN REDDITT SUBDIVISION CONTRACT 1

PLESSIS ROAD - 525 LDS
DUGALD ROAD TO 350m SOUTH OF KERNAGHAN AVENUE

CITY DRAWING NUMBER P-3346-1106
SHEET 22 OF 27
CONSULTANT DWG No. REV
C-0003 0