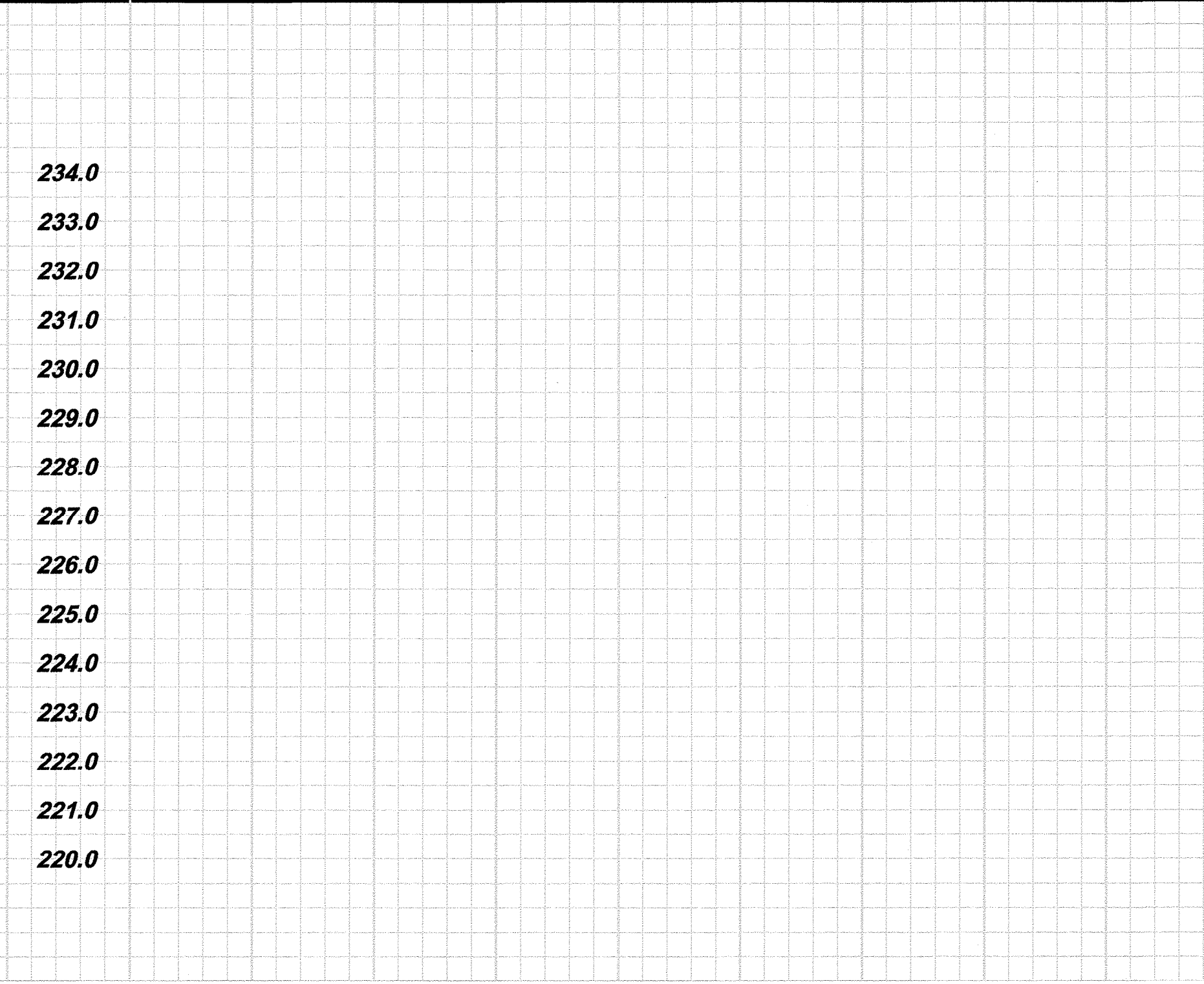
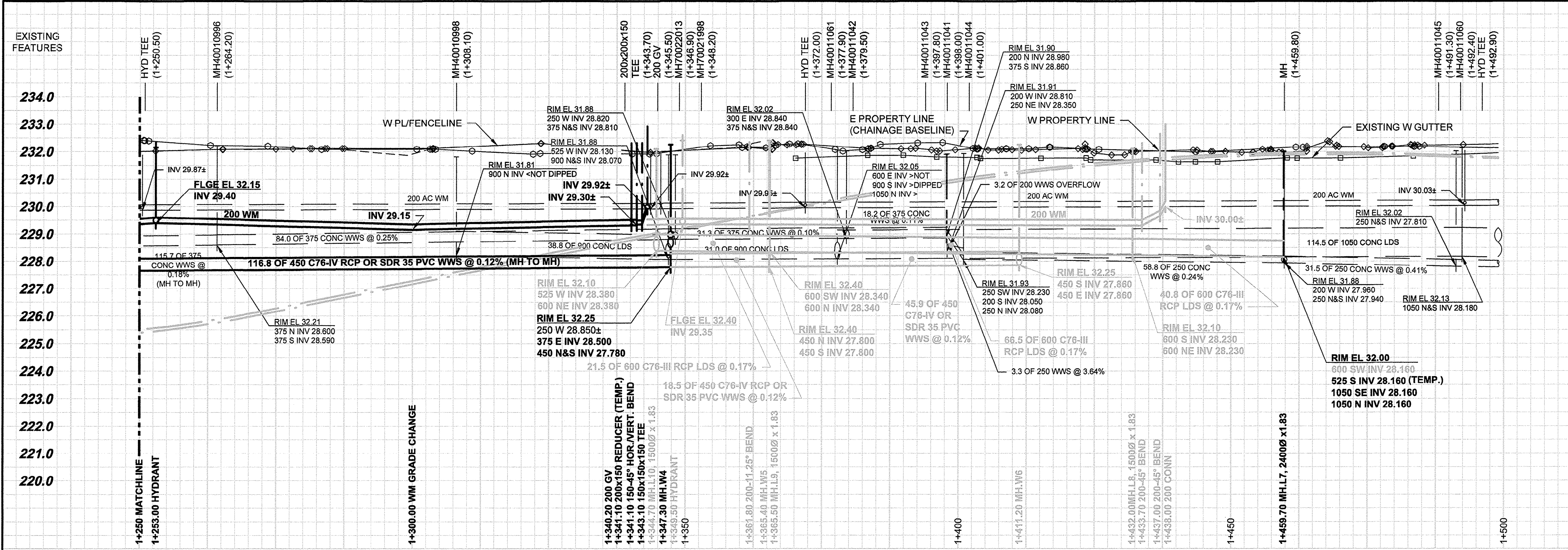


D SIZE 22" x 34" (559mm x 864mm)

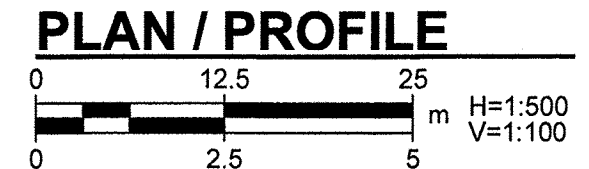
PLOT: 5/14/2013 3:16:29 PM

AECOM REVIEW DRAFT CHK AECOM FILE NAME: 60273041-SHT-01-Cont1-C-0001\_C-0004.dwg Saved By: Iteppia



**WARNING**  
 IF POWER EQUIPMENT OR EXPLOSIVES ARE TO BE USED FOR EXCAVATION ON THIS PROJECT, THE CONTRACTOR MUST:  
 1) NOTIFY THE GAS COMPANY OF THE PROPOSED LOCATION OF EXCAVATION.  
 2) TAKE PRECAUTION TO AVOID DAMAGE TO GAS COMPANY INSTALLATIONS. SEE PROVINCIAL REGULATION 140/92 FOR DETAILS

REFER TO P-3346-1104  
 MATCHLINE AT STA 1+250



**AECOM**  
 Certificate of Authorization  
 AECOM Canada Ltd.  
 No. 4671 Date: *MAY 14 2013*

BID OPPORTUNITY NO. 342-2013

EXISTING	LEGEND - PLAN	NEW	EXISTING	LEGEND - PROFILE	NEW	EXISTING	LEGEND - PROFILE	NEW
150 WM	WATERMAIN	150 WM	CURB STOP	150 WM	WATERMAIN	150 WM	WATERMAIN	150 WM
Hydrant	HYDRANT	Reducer	REDUCER	Hydrant	HYDRANT	Reducer	REDUCER	Hydrant
Valve	VALVE	Coupling	COUPLING	Valve	VALVE	Coupling	COUPLING	Valve
300 LDS	LAND DRAINAGE SEWER	300 LDS	ANODE	300 LDS	LAND DRAINAGE SEWER	300 LDS	LAND DRAINAGE SEWER	300 LDS
250 WWS	WASTE WATER SEWER	250 WWS	HYDRO	250 WWS	WASTE WATER SEWER	250 WWS	WASTE WATER SEWER	250 WWS
Manhole	MANHOLE	Manhole	MTS	Manhole	MANHOLE	Manhole	MANHOLE	Manhole
Catch Basin	CATCH BASIN	Catch Basin	GAS	Catch Basin	CATCH BASIN	Catch Basin	CATCH BASIN	Catch Basin
Curb Inlet	CURB INLET	Curb Inlet	TESTHOLE	Curb Inlet	CURB INLET	Curb Inlet	CURB INLET	Curb Inlet
Culvert	CULVERT	Culvert	LAMP STANDARD	Culvert	CULVERT	Culvert	CULVERT	Culvert
Pipe Abandonments	PIPE ABANDONMENTS	Pipe Abandonments	TREE	Pipe Abandonments	PIPE ABANDONMENTS	Pipe Abandonments	PIPE ABANDONMENTS	Pipe Abandonments
Survey Bar	SURVEY BAR	Survey Bar		Survey Bar	SURVEY BAR	Survey Bar	SURVEY BAR	Survey Bar

**LOCATION APPROVED**  
 UNDERGROUND STRUCTURES

SUPR. U/G STRUCTURES DATE COMMITTEE

**NOTE:**  
 LOCATION OF UNDERGROUND STRUCTURES AS SHOWN ARE BASED ON THE BEST INFORMATION AVAILABLE. BUT NO GUARANTEE IS GIVEN THAT ALL EXISTING UTILITIES ARE SHOWN OR THAT THE GIVEN LOCATIONS ARE EXACT. CONFIRMATION OF EXISTENCE AND EXACT LOCATION OF ALL SERVICES MUST BE OBTAINED FROM THE INDIVIDUAL UTILITIES BEFORE PROCEEDING WITH CONSTRUCTION.

NO.	REVISIONS	DATE	BY
0	ISSUED FOR TENDER	13/05/14	ADL
		YYMMDD	

**AECOM**  
 WHOLE NUMBERS INDICATE MILLIMETRES  
 DECIMALIZED NUMBERS INDICATE METRES

DESIGNED BY: JAT  
 CHECKED BY: [Signature]  
 DRAWN BY: ADL  
 APPROVED BY: [Signature]  
 HOR. SCALE: 1:500  
 VERT. SCALE: 1:100  
 RELEASED FOR CONSTRUCTION: [Signature]  
 DATE:

PROFESSIONAL'S SEAL  
 PROVINCE OF MANITOBA  
 D.M.R. ENNS  
 Member  
 31777  
 MAY 14 2013  
 REGISTERED PROFESSIONAL ENGINEER  
 CONSULTANT DRAWING NO.  
 60273041-SHT-01-Cont1-C-0001\_C-0004

**THE CITY OF WINNIPEG**  
 PUBLIC WORKS DEPARTMENT

**PLESSIS ROAD TWINNING AND GRADE SEPARATION AT CN REDDITT SUBDIVISION CONTRACT 1**

205m NORTH OF DUGALD ROAD  
 TO 100m SOUTH OF KERNAGHAN AVENUE

CITY DRAWING NUMBER: P-3346-1105  
 SHEET: 21 OF 27  
 CONSULTANT DWG No.: C-0002  
 REV: 0