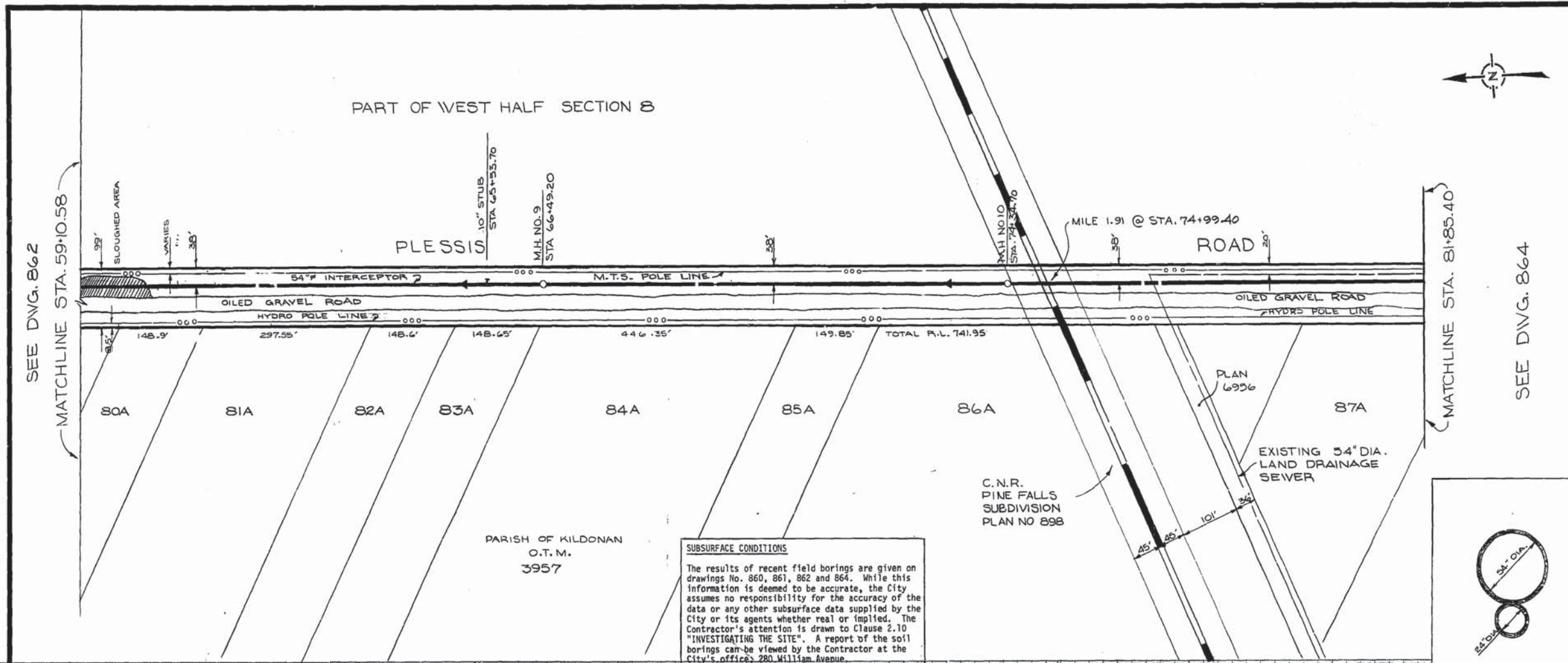


Appendix C

Historic Drawings



LEGEND

WATERWORKS, WASTE AND DISPOSAL UNDERGROUND UTILITIES

PROPOSED FORCEMAIN, INTERCEPTOR OR SECONDARY SEWER _____

EXISTING FORCEMAIN, INTERCEPTOR OR SECONDARY SEWER _____ W.W.D. 24\"/>

PROPOSED FEEDERMAIN _____

EXISTING FEEDERMAIN _____ W.W.D. 24\"/>

W.W.D. — WATERWORKS, WASTE AND DISPOSAL

OTHER UNDERGROUND UTILITIES

COMMUNITY SEWER _____

COMMUNITY WATERMAIN _____

GAS _____

HYDRO DUCT _____

M.T.S. DUCT OR CABLE _____

STREET LIGHTING, RAILWAY SIGNAL OR TRAFFIC SIGNAL CABLE _____

SURFACE UTILITIES

COMMUNITY BOUNDARY LINE _____

FENCE LINE _____

POLE LINE _____

RAILWAY LINE _____

MISCELLANEOUS SYMBOLS

CATCH BASIN _____

CULVERT _____

HYDRANT _____

MANHOLE _____

HYDRO OR M.T.S. POLE _____

LAMP STANDARD _____

RAILWAY OR TRAFFIC SIGNAL STANDARD _____

SURVEY BAR _____

TREE _____

VALVE _____

FLOW _____

NOTES

AS BUILT

William Wilson 18 09 14
 SURVEY ENGINEERING DATE

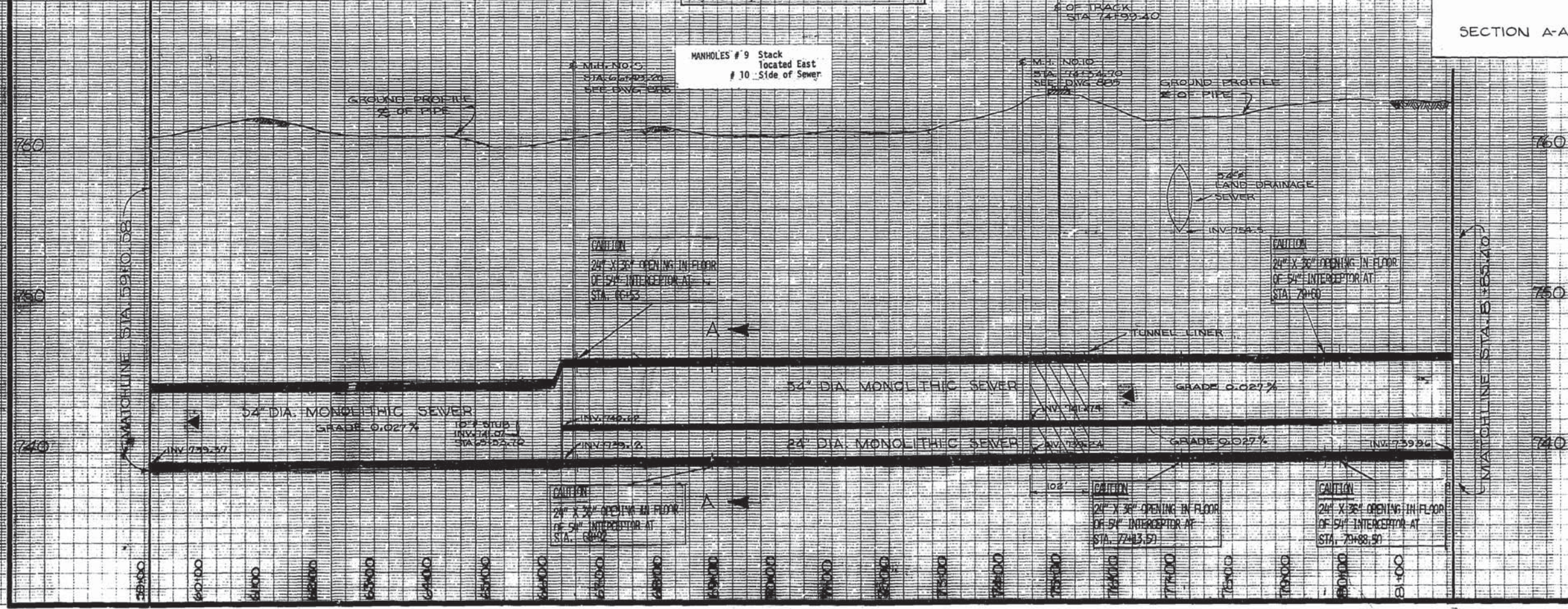
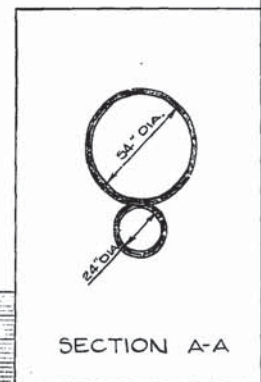
AS BUILT	780308 m.s.
NO.	DESCRIPTION
780308	DATE BY

REVISIONS

FIELD BOOKS NO. F 400	SURVEYED BY
LAND SURVEY PLANS NO.	DMC, D.S.
B. M.	DATE
	DEC 2, 1975

SUBSURFACE CONDITIONS

The results of recent field borings are given on drawings No. 860, 861, 862 and 864. While this information is deemed to be accurate, the City assumes no responsibility for the accuracy of the data or any other subsurface data supplied by the City or its agents whether real or implied. The Contractor's attention is drawn to Clause 2.10 "INVESTIGATING THE SITE". A report of the soil borings can be viewed by the Contractor at the City's offices, 280 William Avenue.



AS BUILT	780308 m.s.
NO.	DESCRIPTION
780308	DATE BY

REVISIONS

FIELD BOOKS NO. F 400	SURVEYED BY
LAND SURVEY PLANS NO.	DMC, D.S.
B. M.	DATE
	DEC 2, 1975

The City of Winnipeg

Waterworks, Waste and Disposal Division

ENGINEERING BRANCH
 WASTE DISPOSAL

**NORTH EAST INTERCEPTOR
 STAGE V**

STA. 59+10.58 TO STA. 81+85.40

DESIGNED BY *W. Wilson*
 CHECKED BY *S. Kelly*
 APPROVED BY *W. Wilson*

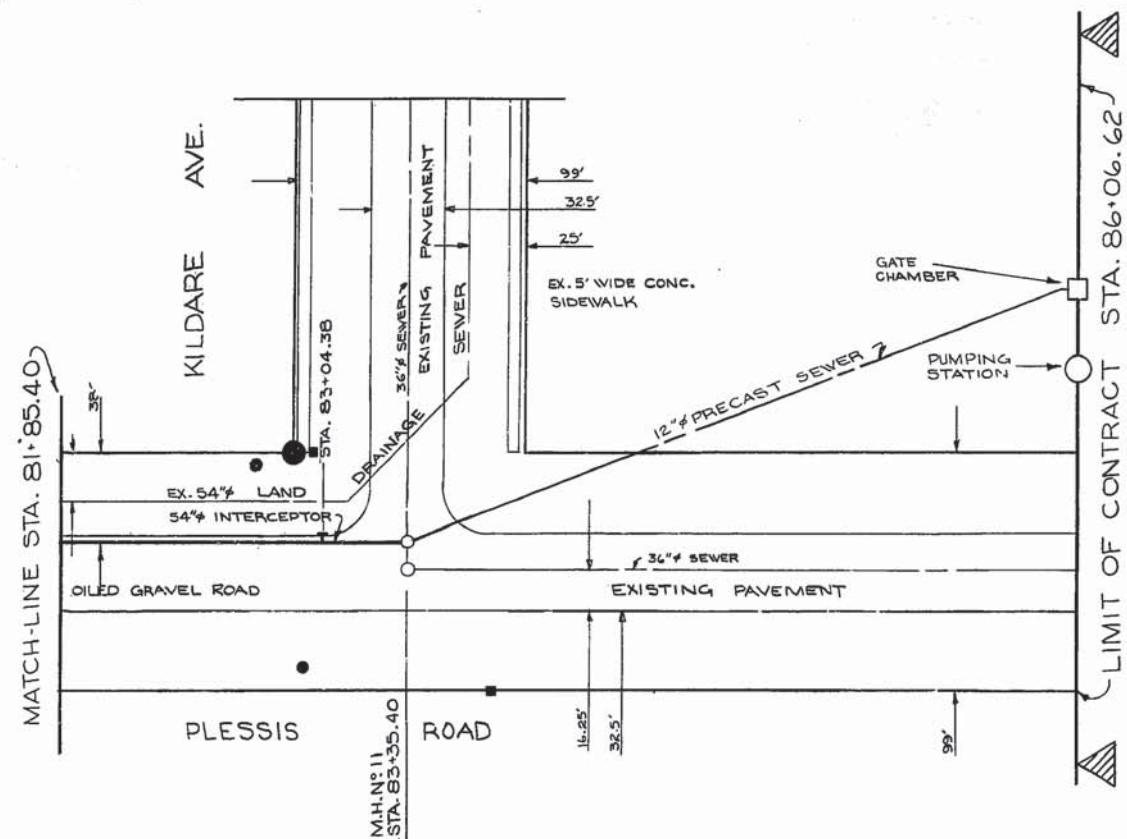
DRAWN BY *m.c.*
 DATE MARCH 26, 1976

SCALE
 HOR. - 1"=100'
 VERT. - 1"=4'-0"

DRAWING NO. **863**

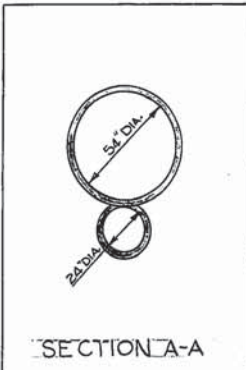


SEE DWG. 863



SUBSURFACE CONDITIONS

The results of recent field borings are given on drawings No. 860, 861, 862 and 864. While this information is deemed to be accurate, the City assumes no responsibility for the accuracy of the data or any other subsurface data supplied by the City or its agents whether real or implied. The Contractor's attention is drawn to Clause 2.10 "INVESTIGATING THE SITE". A report of the soil borings can be viewed by the Contractor at the City's office, 280 William Avenue.



LEGEND

WATERWORKS, WASTE AND DISPOSAL: UNDERGROUND UTILITIES

PROPOSED FORCEMAIN, INTERCEPTOR OR SECONDARY SEWER: _____

EXISTING FORCEMAIN, INTERCEPTOR OR SECONDARY SEWER: _____ W.W.D. 24" SEWER

PROPOSED FEEDERMAIN: _____

EXISTING FEEDERMAIN: _____ W.W.D. 24" W.M.

W.W.D. — WATERWORKS, WASTE AND DISPOSAL

OTHER UNDERGROUND UTILITIES

COMMUNITY SEWER: _____

COMMUNITY WATERMAIN: _____

GAS: _____

HYDRO DUCT: _____

M.T.S. DUCT OR CABLE: _____

STREET LIGHTING, RAILWAY SIGNAL OR TRAFFIC SIGNAL CABLE: _____

SURFACE UTILITIES

COMMUNITY BOUNDARY LINE: _____

FENCE LINE: _____

POLE LINE: _____

RAILWAY LINE: _____

MISCELLANEOUS SYMBOLS

CATCH BASIN: ○

CULVERT: [Symbol]

HYDRANT: [Symbol]

MANHOLE: ○

HYDRO OR M.T.S. POLE: [Symbol]

LAMP STANDARD: [Symbol]

RAILWAY OR TRAFFIC SIGNAL STANDARD: [Symbol]

SURVEY BAR: [Symbol]

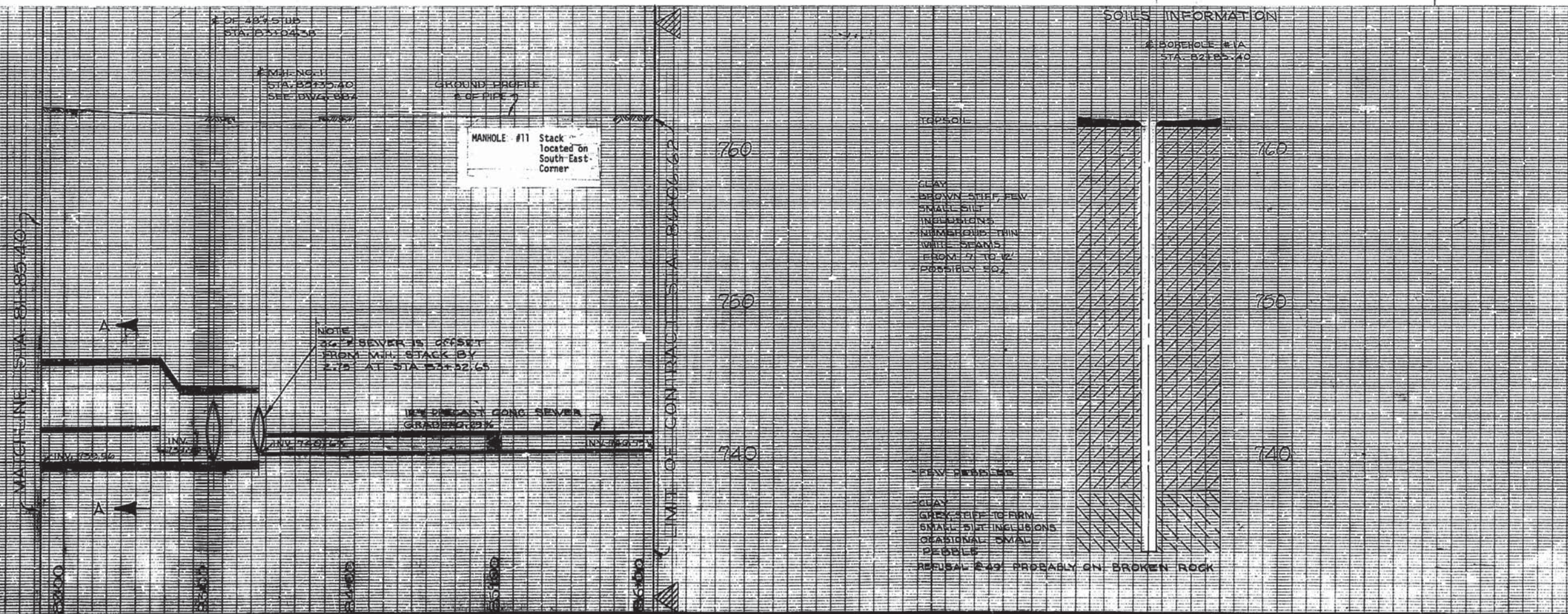
TREE: [Symbol]

VALVE: [Symbol]

NOTES

AS BUILT

W. Mclellan 78.09.14



REVISIONS

NO.	DESCRIPTION	DATE	BY
1	AS BUILT	78.08.29	m.s.

FIELD BOOKS: NO. F400 SURVEYED BY: R.T. & DS. DATE: _____

LAND SURVEY PLAN(S) NO. _____

B. M. _____

The City of Winnipeg

Waterworks, Waste and Disposal Division

ENGINEERING BRANCH
WASTE DISPOSAL

**NORTH EAST INTERCEPTOR
STAGE V**

STA. 81+85.40 TO STA 86+06.62

DESIGNED BY: *W. Mclellan* DRAWN BY: *m.s.*

CHECKED BY: *Roma Guly* DATE: MARCH 26/76

APPROVED BY: *[Signature]*

SCALE: HOR. - 1" = 40' VERT. - 1" = 4'-0"

DRAWING NO. **864**