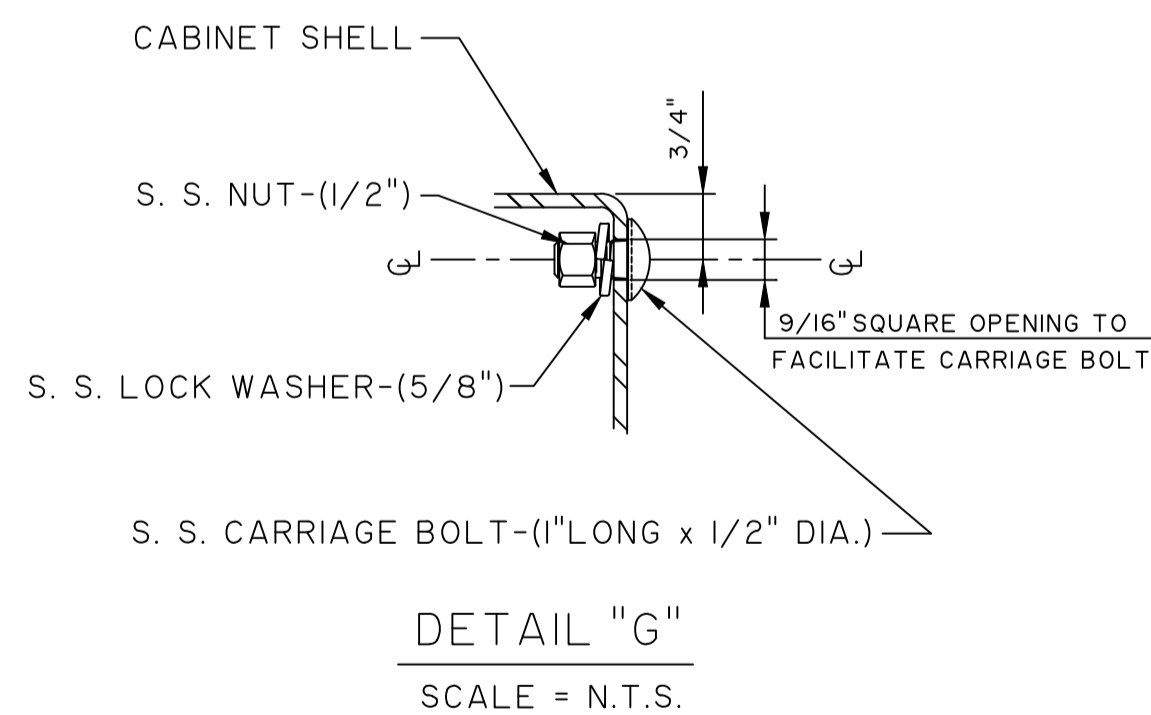
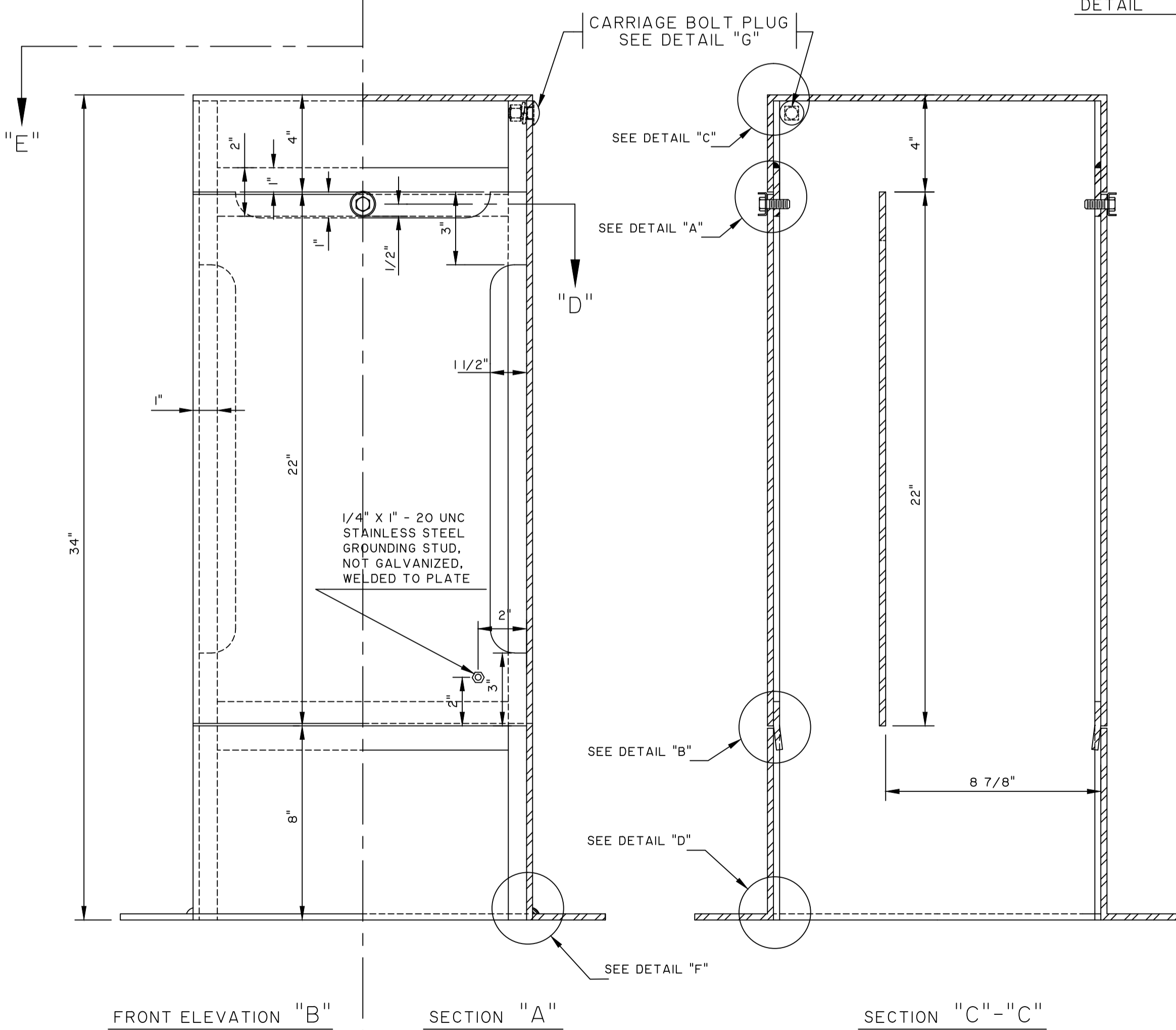


ISOMETRIC DRAWING OF ASSEMBLY



NOTES:

1. PEDESTAL TO BE 7 GAUGE CSA G 40.21-44W (300W) STEEL
2. INSIDE PANEL MAY BE 12 GAUGE
3. DOORS SHALL BE INTERCHANGEABLE
4. ALL SEAMS SHALL BE CONTINUOUS WELD
5. ALL WELDS & EDGES SHALL BE GROUND SMOOTH.
6. PEDESTAL TO BE HOT DIPPED GALVANIZED IN ACCORDANCE WITH ASTM A123-09 (PLUS LATEST REVISIONS), NET RETENTION OF 610 g/m
7. MINIMUM DIAMETER OF FLAT PORTION INSIDE CUP WASHER TO ACCOMMODATE STANDARD 3/8" SOCKET
8. ALL BOLTS AND NUTS SHALL BE STAINLESS STEEL-(S. S.) 316 TYPE.

No	DATE	REVISIONS	BY
3.	13/04/04	UPDATED METAL AND GALVANIZING DETAILS	
2.	07/12/13	ADDED OVERALL DIMENSION ON PLAN VIEW	
1.	03/03/07	ADDED/CORRECTED NOTES AND DETAILS	

LOCATION APPROVED	
UNDERGROUND STRUCTURES COMMITTEE	DATE
APPROVED BY	
ORIGINAL ON FILE SIGNED MC APR. 4/13	DATE
RELEASED FOR CONSTRUCTION	
MANAGER OF TRANSPORTATION ENGINEERING	DATE
DRAWN BY N.C. 95/08/03 PRELIM. CHK.	DATE

DESIGNED BY _____
CHECKED BY _____

THE CITY OF WINNIPEG
PUBLIC WORKS DEPARTMENT
TRANSPORTATION ENGINEERING DIVISION

STANDARD TRAFFIC SIGNALS
CONTROLLER PEDESTAL

SCALE
3" = 1'-0"
DRAWING NO.
ST-34A