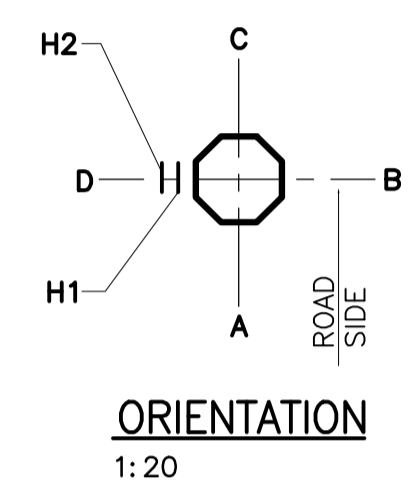
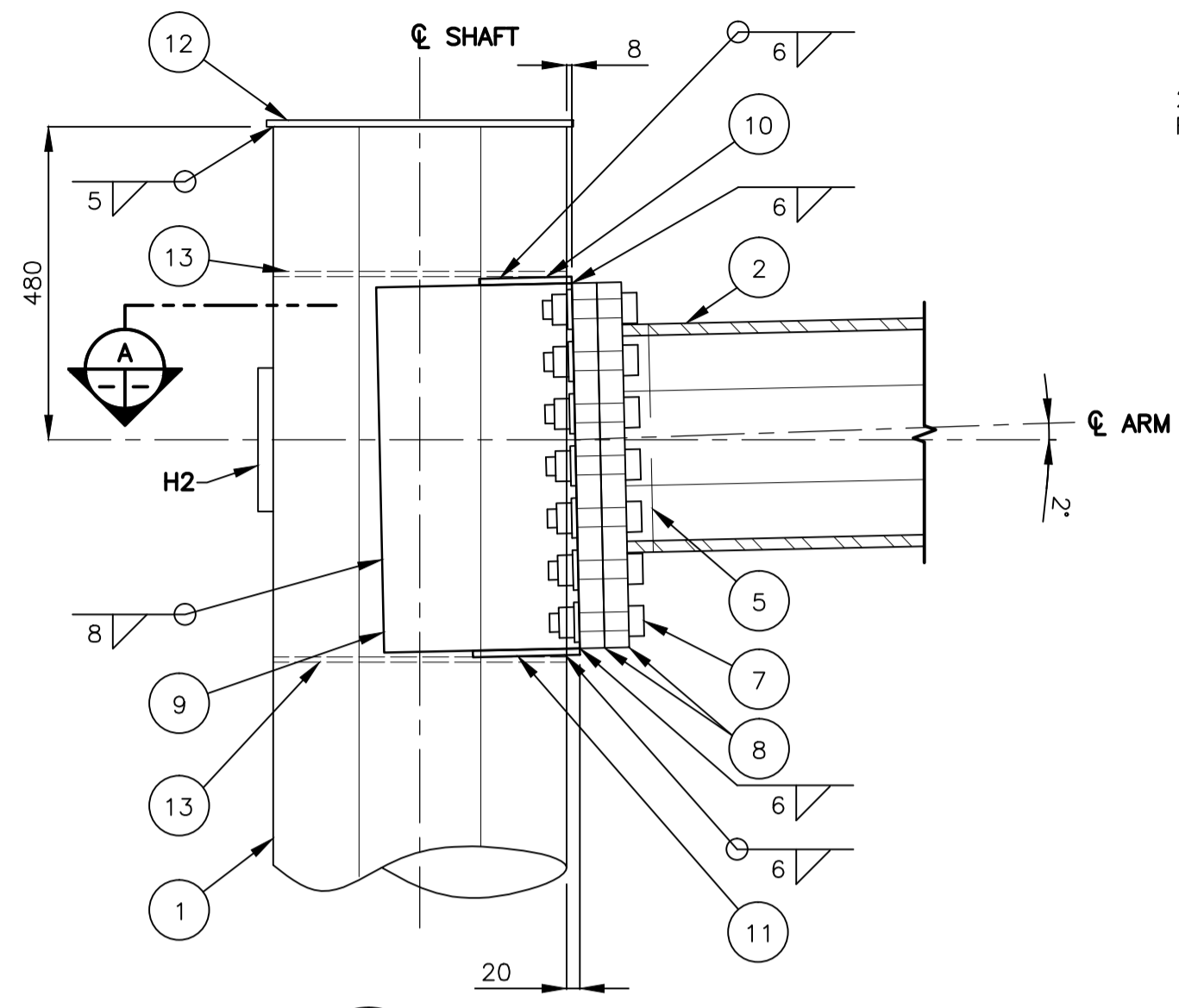


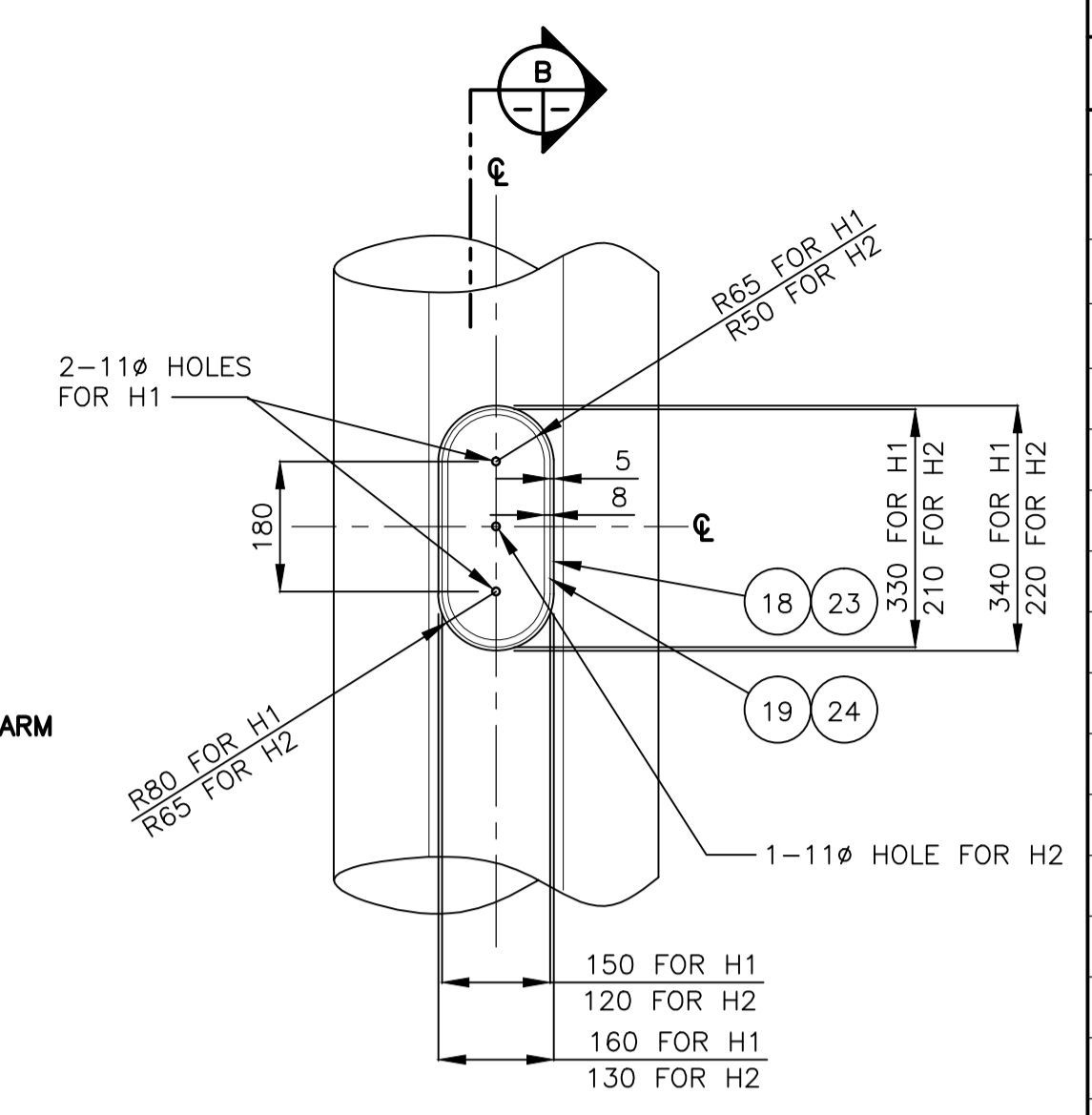
ELEVATION
1:60



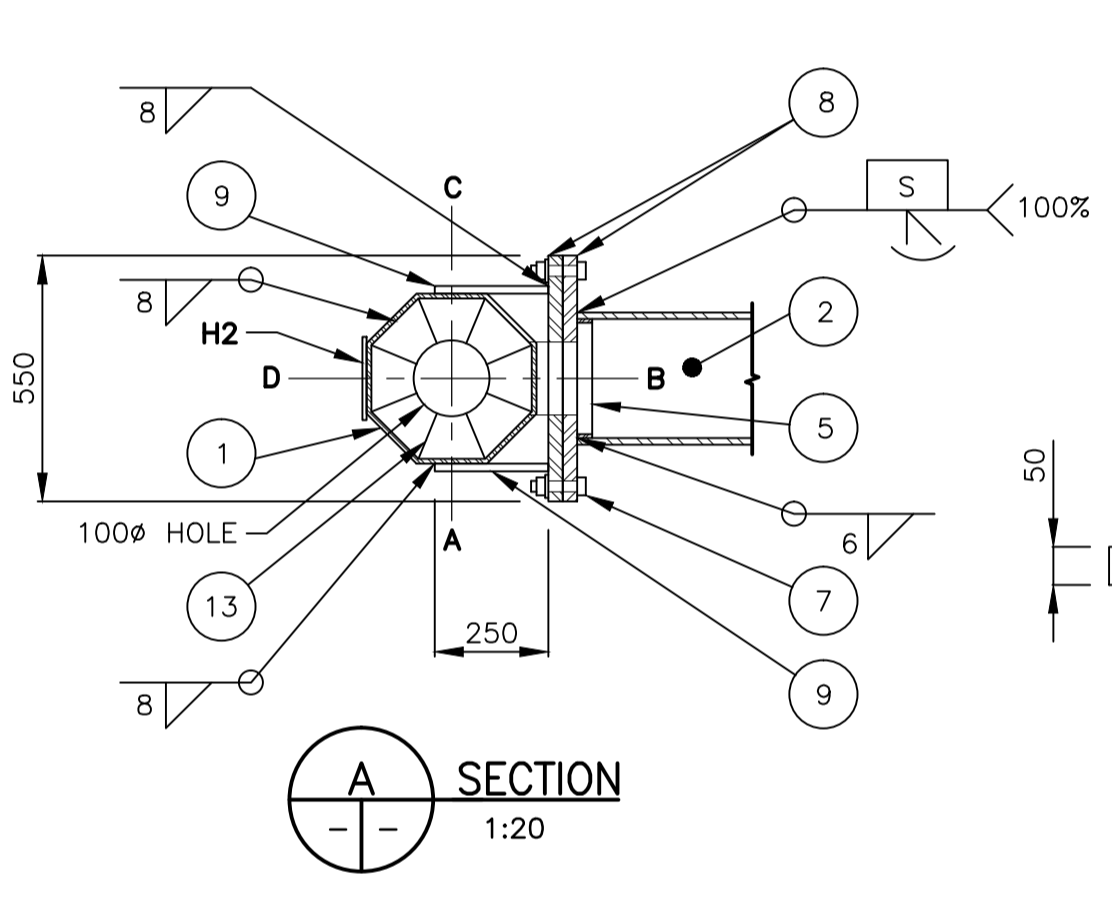
ORIENTATION
1:20



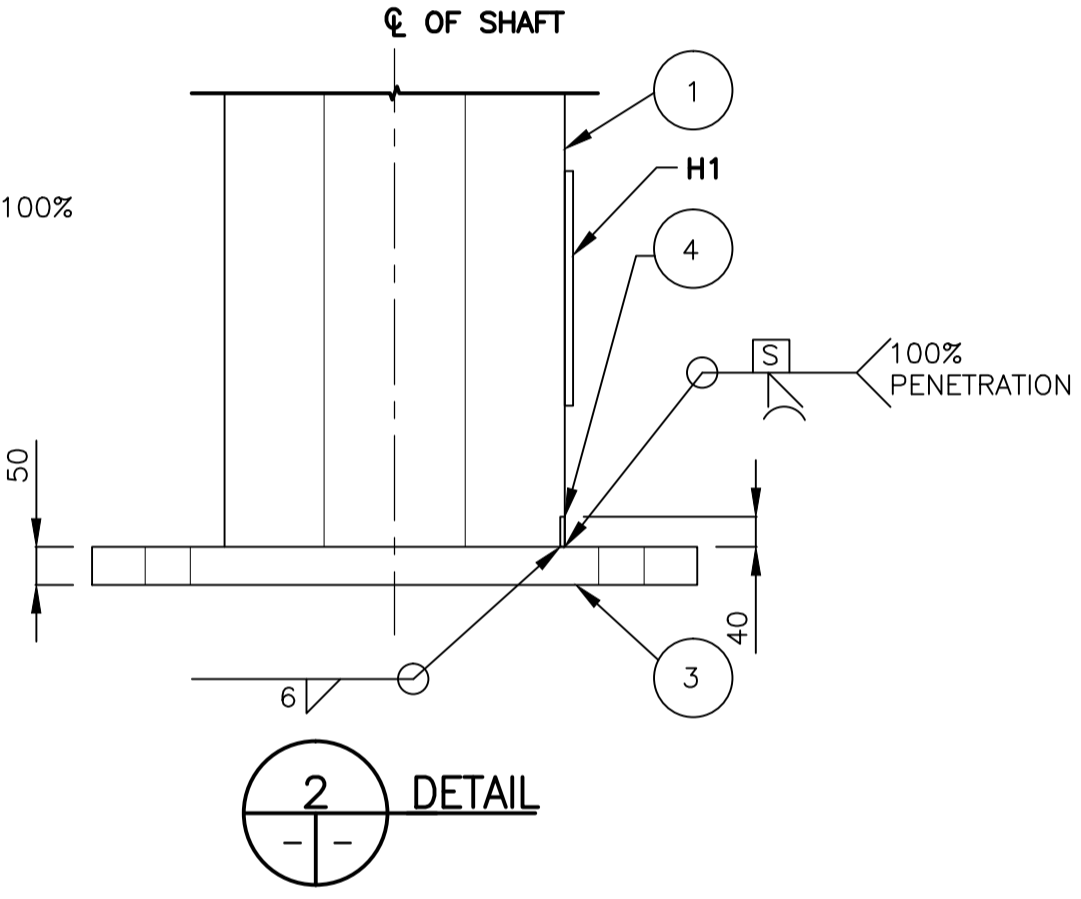
DETAIL



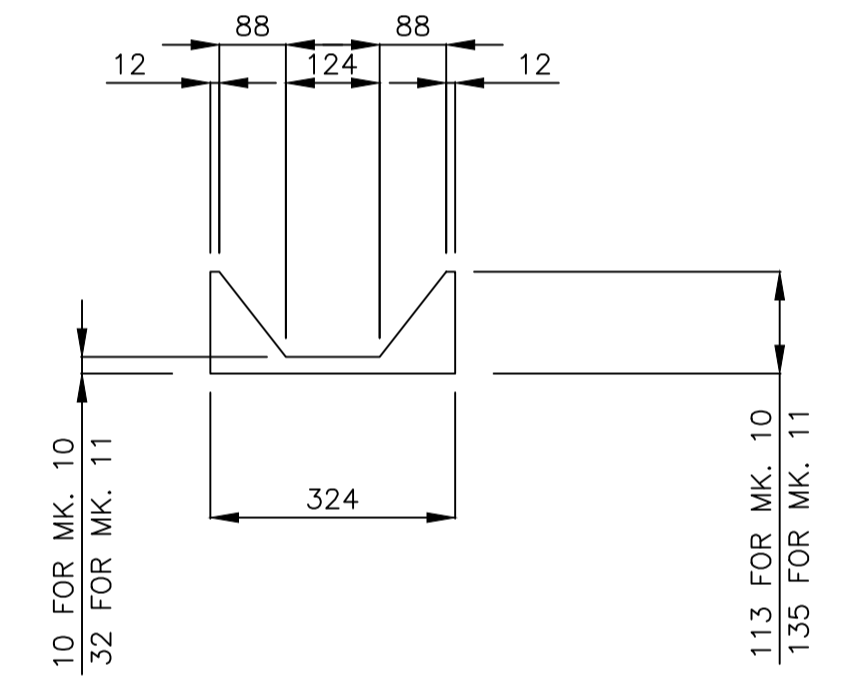
HANDHOLE ELEVATION



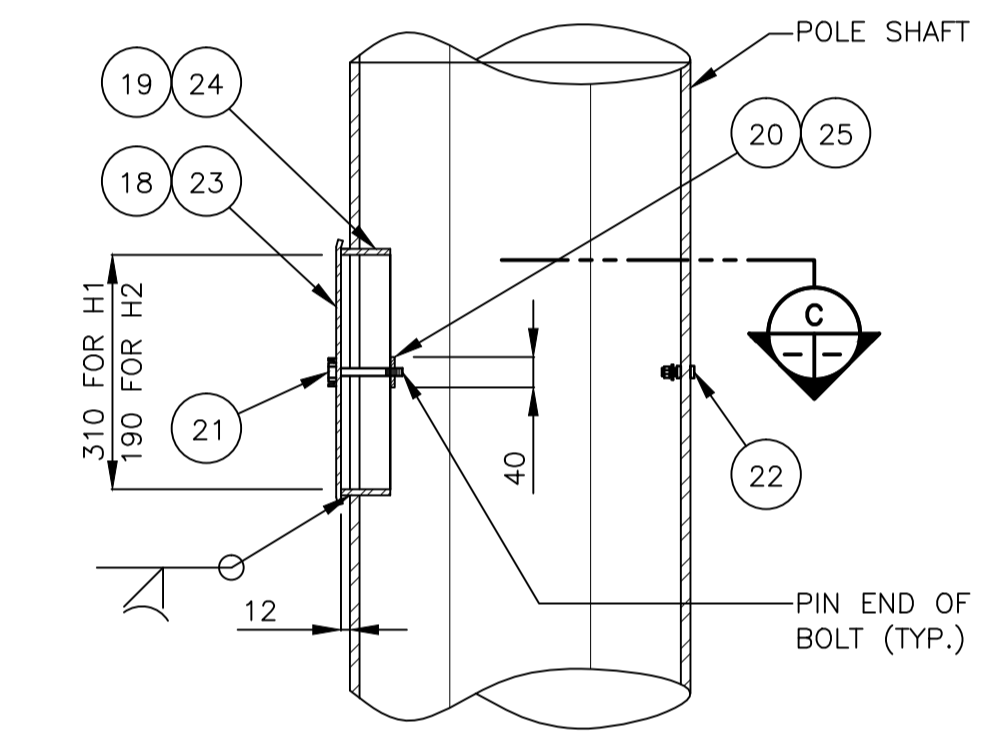
SECTION A
1:20



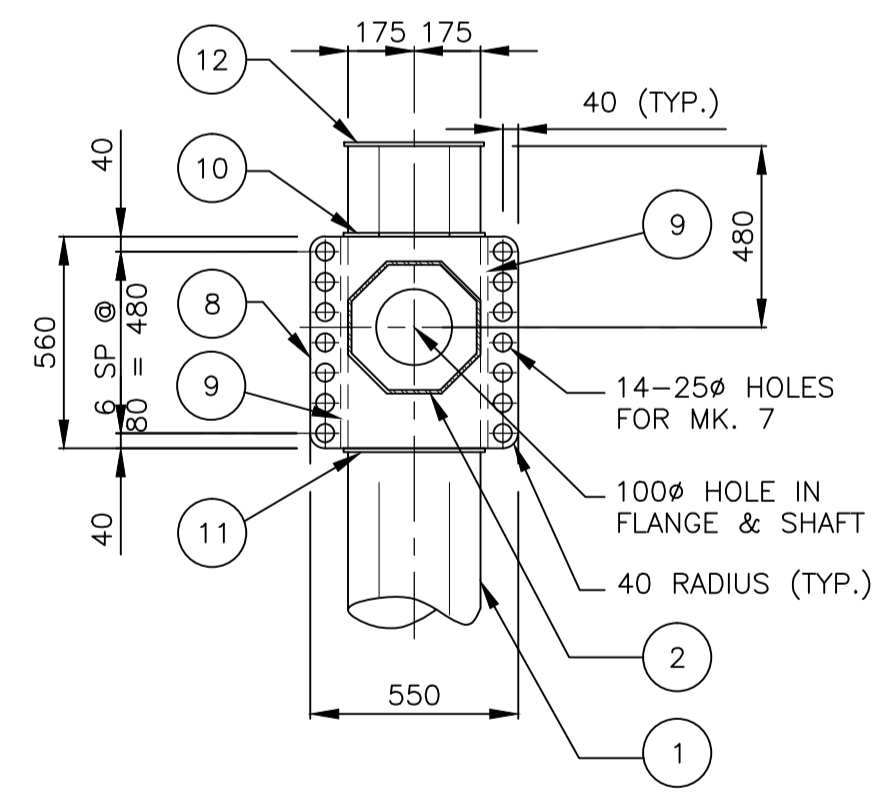
DETAIL 2



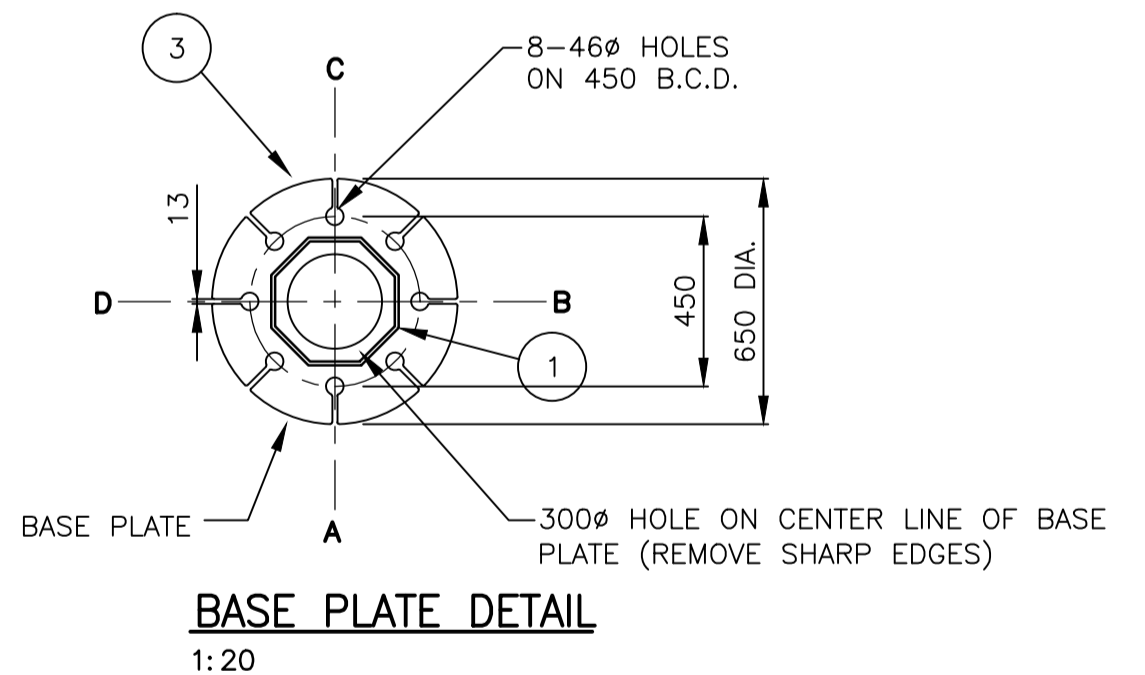
GUSSET PLATE MK. '10' & '11'



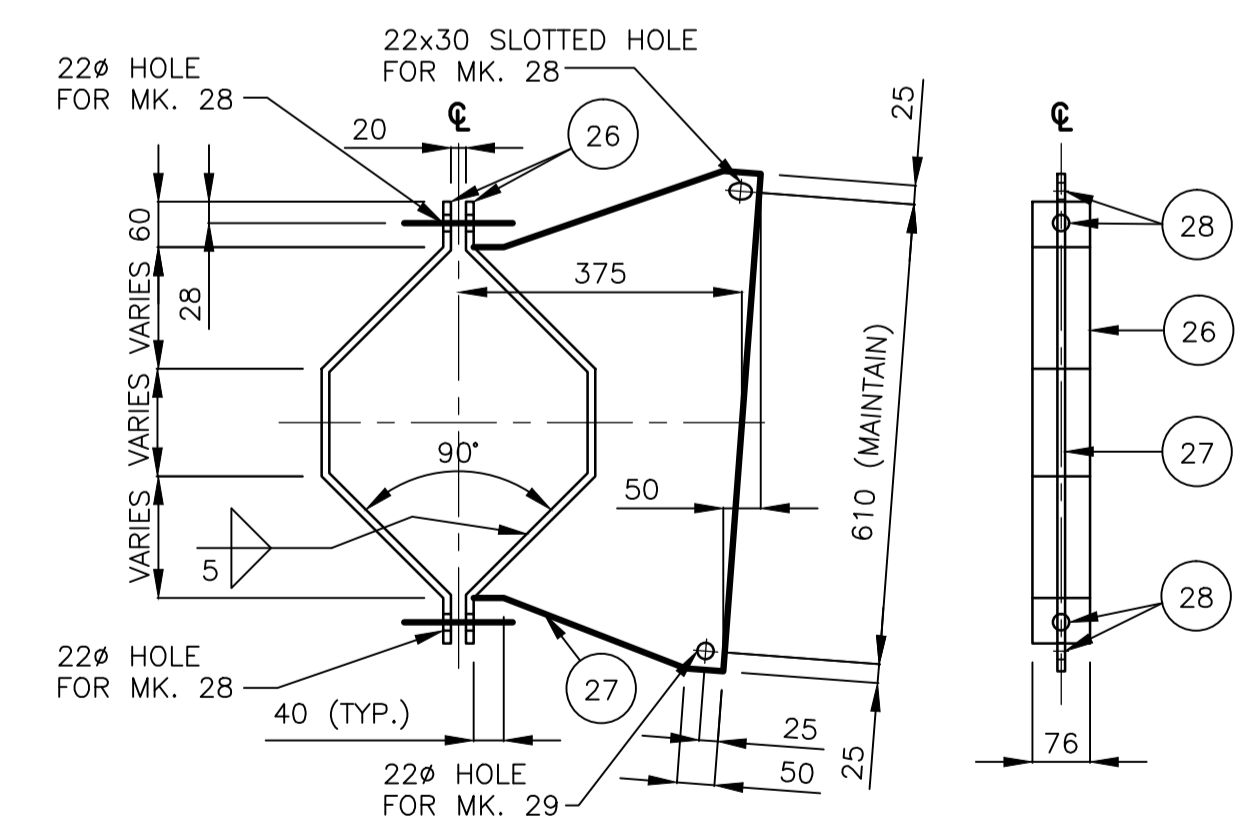
HANDHOLE SECTION MK. 'H1' & 'H2'



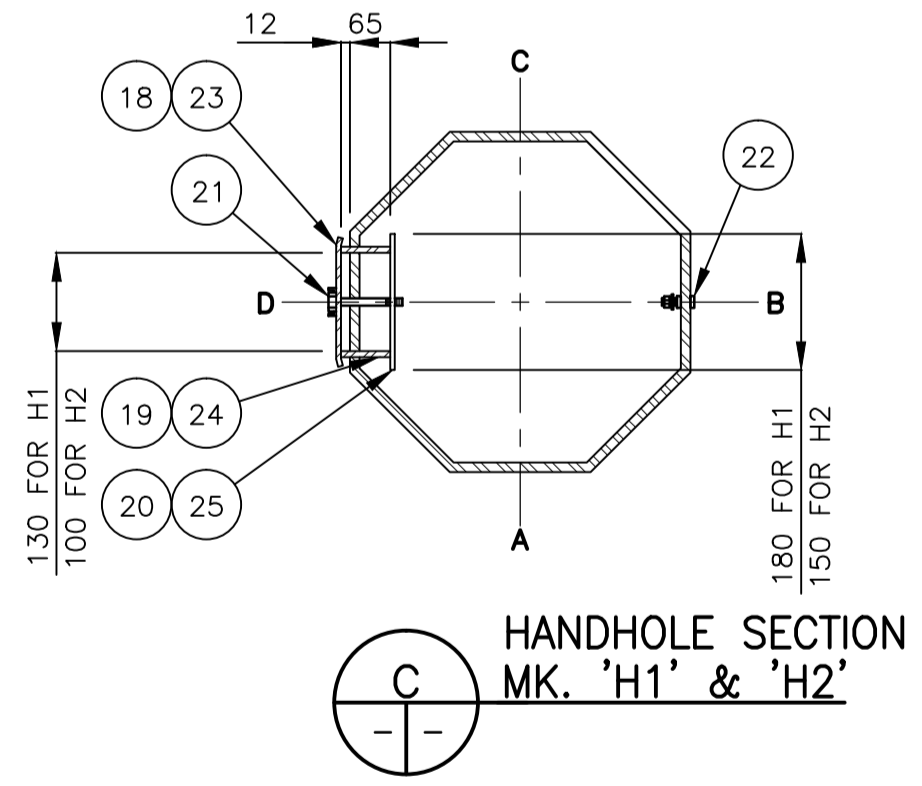
FLANGE PLATE DETAIL
1:20



BASE PLATE DETAIL
1:20

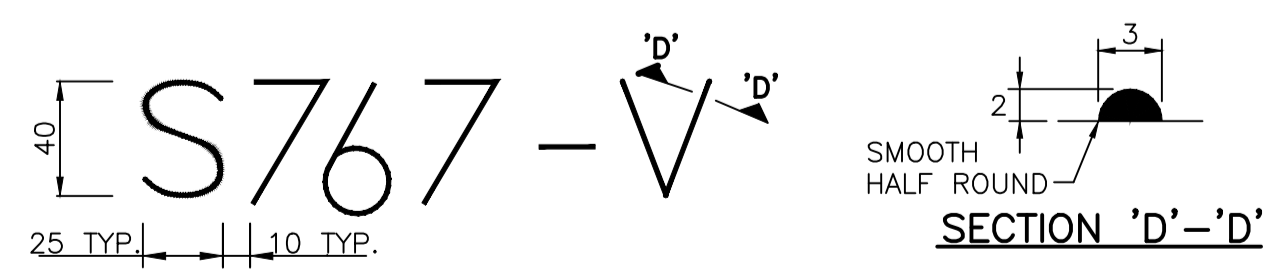


SIGN MOUNTING BRACKET MK. 'BR1' DETAIL

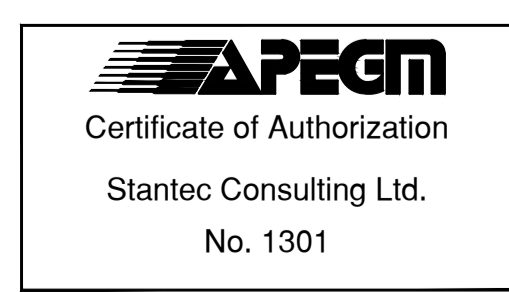


HANDHOLE SECTION MK. 'H1' & 'H2'

- NOTES:**
- PROVIDE "RAISED" IDENTIFICATION NO. WITH WELDING ELECTRODE FOR THE SIGN STRUCTURE.
 - GRIND ALL SHARP POINTS AND EDGES.



TYPICAL STRUCTURE IDENTIFICATION NUMBER SIZE



BILL OF MATERIALS		
MK.	QTY.	DESCRIPTION
1	1	OCTAGONAL SHAFT 300 A/F x 9.525
2	1	OCTAGONAL ARM 300 A/F TO 200 A/F x 9.525
3	1	BASE PLATE 650 DIA. x 50 THICK (GR. 300W)
4	1	BACKUP STRIP 40 x 6 (FOR SHAFT)
5	1	BACKUP STRIP 40 x 6 (FOR ARM)
6	1	END PLATE 200 A/F OCTAGONAL 6 THICK
7	14	22 DIA.x100 LG. A325 BOLTS GALV. C/W NUT&WASHER
8	2	FLANGE PLATE 500 x 560 x 38 (GR. 300W)
9	2	SIDE GUSSET PLATE 20 x 560 x 250
10	1	TOP GUSSET PLATE 10 THICK
11	1	BOTTOM GUSSET PLATE 10 THICK
12	1	COVER PLATE 370 DIA x 10 THICK
13	2	OCTAGONAL INTERIOR GUSSET PLATE 8 THICK
HANDHOLE MARK H1 (1 REQ'D.)		
18	1	COVER PLATE 11 GA. x 160 x 340 (A569)
19	1	REINFORCING RING 8 x 65 x 830
* 20	2	CLAMP BAR 6 x 40 x 180
* 21	2	9.5 DIA. x 140 BOLT S/S (TYPE 316)
* 22	1	GROUND STUD ASSEMBLY 10 DIA. x 40
HANDHOLE MARK H2 (1 REQ'D.)		
23	1	COVER PLATE 11 GA. x 130 x 220 (A569)
24	1	REINFORCING RING 8 x 65 x 555
* 25	1	CLAMP BAR 6 x 40 x 150
* 21	1	9.5 DIA. x 140 BOLT S/S (TYPE 316)
* 22	1	GROUND STUD ASSEMBLY 10 DIA. x 40
SIGN MOUNTING BRACKET BR1 (3 REQ'D.)		
26	2	CLAMP BAR 10 x 76 (LENGTH TO SUIT)
27	1	BRACKET PL. 10 THICK
28	2	19 DIA. x 76 A325 BOLT (GALV.)
* 29	2	19 DIA. x 50 S/S BOLT (TYPE 316)

- * NOTES:**
- MARK NO. 29 C/W NUT AND LOCK WASHER.
 - MARK NO. 20 & 25 C/W DRILLED AND TAPPED AT THE CENTER OF PLATE FOR MK. 21
 - MARK NO. 21 C/W CUP WASHER.
 - MARK NO. 22 C/W 2-10Ø HEX NUT, 2 TERMINAL WASHERS, & 1 LOCK WASHER.

- GENERAL NOTES**
- DESIGN DATA**
AASHTO STANDARD SPECIFICATIONS FOR STRUCTURAL SUPPORTS FOR HIGHWAY SIGNS, LUMINAIRES, AND TRAFFIC SIGNALS, 5TH EDITION, 2009.
DESIGN WIND LOAD = 1.5 kPa (32 PSF)
DESIGN ICE LOAD = 0.15 kPa (3 PSF)
 - ALL MATERIALS SHALL BE CSA G40.21 - 350W STRUCTURAL STEEL UNLESS OTHERWISE NOTED.
 - ALL MATERIALS EXCEPT STAINLESS STEEL AND ALUMINUM SHALL BE HOT-DIP GALVANIZED IN ACCORDANCE WITH ASTM A123 TO A MIN. NET RETENTION OF 610 g/m²
 - ALL AREAS OF DAMAGED GALVANIZING SHALL BE REPAIRED WITH SELF-FLUXING LOW TEMPERATURE, ZINC BASED ALLOY ROD OR SPRAY-ON COATING CALLED "ZINGA".
 - SIGNS**
ONE SIGN PANEL
SIZE 3000 x 1500 mm. SUPPLIED AND INSTALLED BY THE CITY OF WINNIPEG TRAFFIC SERVICES BRANCH.
 - ALL MATERIALS TO FIT AFTER GALVANIZING.

UNDERGROUND STRUCTURES	B.M. ELEV.	DESIGNED BY H.M.V.	DESIGN TEAM	ENGINEER'S SEAL	
SUPV. U/G STRUCTURES COMMITTEE DATE		DRAWN BY S.A.S., T.G.			
		CHECKED BY K.S.A.			RELEASER FOR CONSTRUCTION
		APPROVED BY V.M.M.	DATE	CONSULTANT PROJECT NUMBER	
NOTE: LOCATION OF UNDERGROUND STRUCTURES AS SHOWN ARE BASED ON THE BEST INFORMATION AVAILABLE, BUT NO GUARANTEE IS GIVEN THAT ALL EXISTING UTILITIES ARE SHOWN OR THAT THE GIVEN LOCATIONS ARE EXACT. CONFIRMATION OF EXISTENCE AND EXACT LOCATION OF ALL SERVICES MUST BE OBTAINED FROM THE INDIVIDUAL UTILITIES BEFORE PROCEEDING WITH CONSTRUCTION.		2 ISSUED FOR TENDER 3/04/08 K.S.A.	HOR. SCALE	113705751	CITY DRAWING NUMBER
		1 ISSUED FOR REVIEW 3/03/27 K.S.A.	VERTICAL		S767-2013-02
		0 ISSUED FOR 90% REVIEW 3/02/22 K.S.A.	DATE		SHEET 51 OF 64
		NO. REVISIONS	DATE	13/02/14	CONSULTANT DRAWING NUMBER
					S-502

VA 113705751.drawing\404_working\sheet_files\05751s-502-signs-c1.dwg