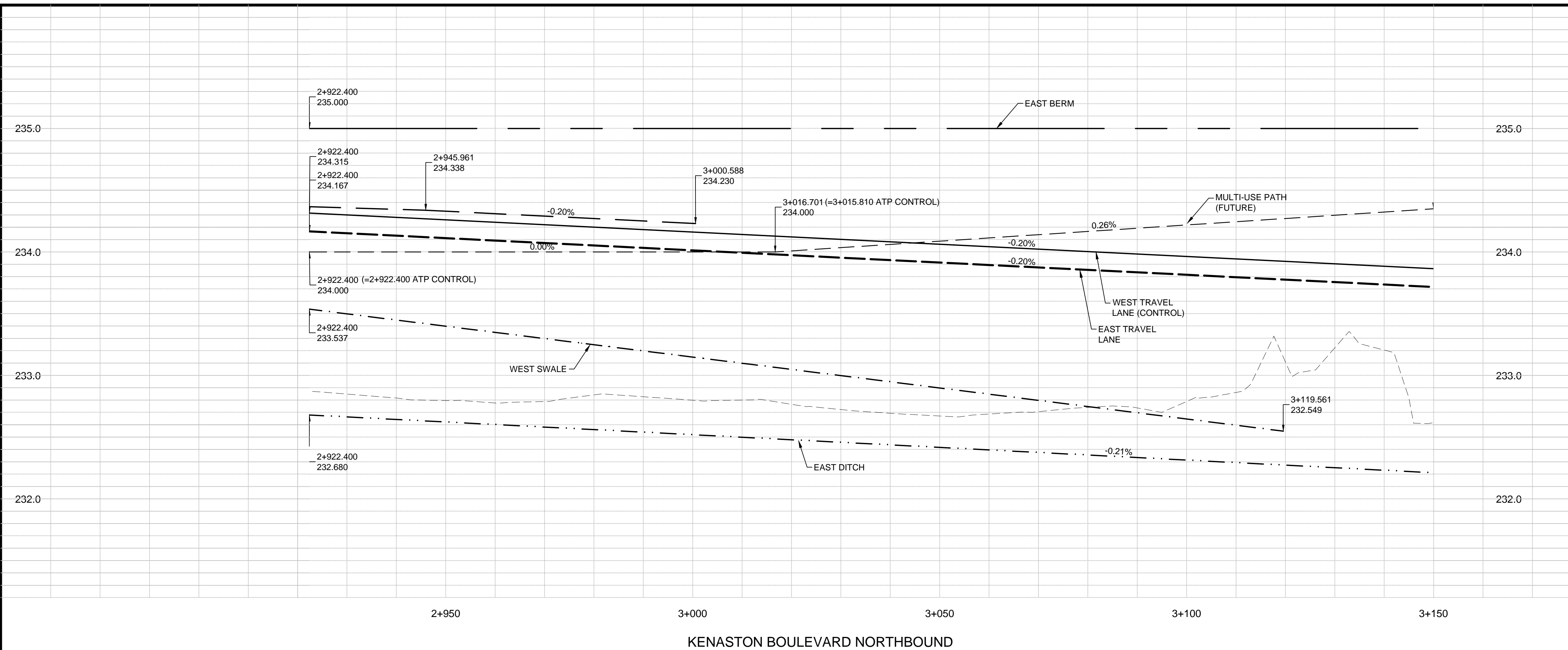
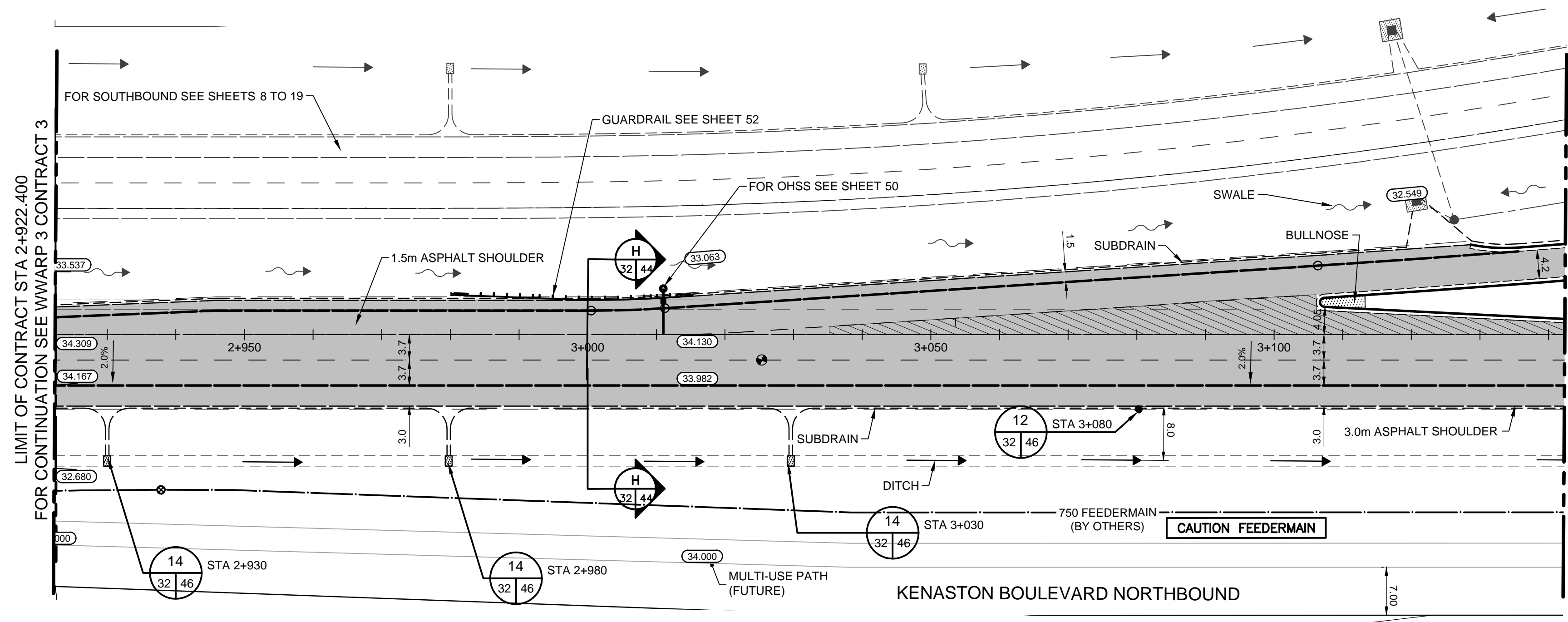
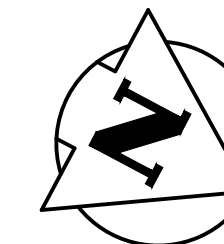


CONSTRUCTION NOTES:

- EACH CATCH BASIN (CB) AND CATCH PIT (CP) INSTALLED IN PAVEMENT TO HAVE AP-011 FRAME AND COVER.
- EACH DITCH INLET CATCH BASIN TO HAVE A DITCH INLET GRATE AS PER DETAIL SHEET 52.
- CONTRACTOR TO EXPOSE AND VERIFY INVERTS OF ALL JUNCTIONS OR CONNECTIONS TO MAINLINE LDS PRIOR TO INSTALLATION OF CATCH BASINS.
- CLASS 3 BACKFILL TO BE USED WITHIN 1.0m OF PAVEMENT FOR ALL UNDERGROUND INSTALLATIONS.
- EXISTING MANHOLES AND CATCH BASINS TO BE ADJUSTED TO DESIGN ELEVATION.
- INSTALL 200mm CONCRETE TRANSITION SLABS C/W ASPHALT OVERLAY WHERE ASPHALT PAVEMENT MATCHES CONCRETE PAVEMENT.
- ADD 200.00m TO ABBREVIATED ELEVATION TO OBTAIN GEODETIC ELEVATION.

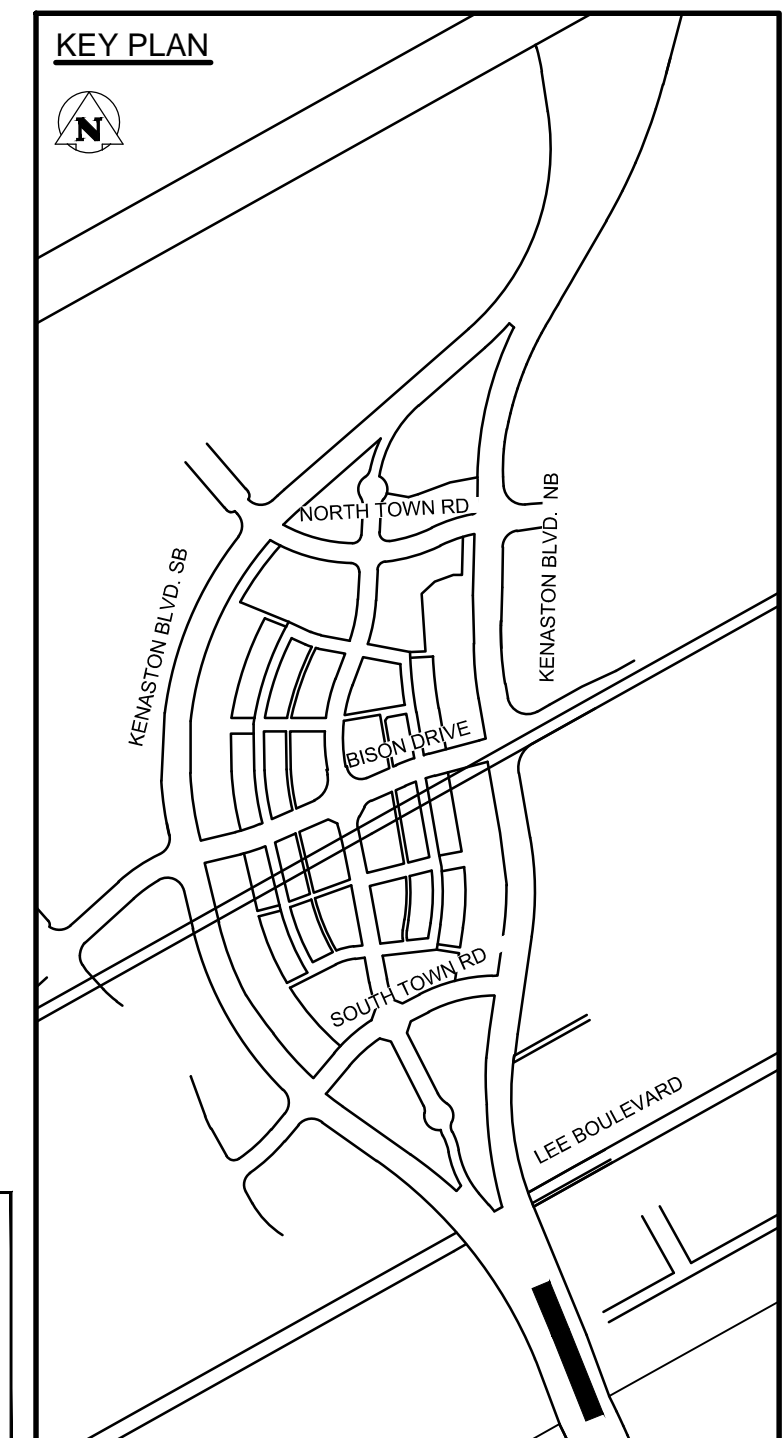


KENASTON BOULEVARD NORTHBOUND



KENASTON BOULEVARD NORTHBOUND

FOR CENTER STREET INFO SEE SHEET 40



METRIC

WHOLE NUMBERS INDICATE MILLIMETRES
DECIMALIZED NUMBERS INDICATE METRES

WARNING

- IF POWER EQUIPMENT OR EXPLOSIVES ARE TO BE USED FOR EXCAVATION ON THIS PROJECT THE CONTRACTOR MUST:
- NOTIFY THE GAS COMPANY OF THE PROPOSED LOCATION OF EXCAVATION.
 - TAKE PRECAUTION TO AVOID DAMAGE TO GAS COMPANY INSTALLATIONS SEE PROVINCIAL REGULATION 210/72 FOR DETAILS.
 - OBTAIN EXCAVATION PERMITS PRIOR TO CONSTRUCTION.

84R635 - Lake Crest Rd. & Waverley St., Tblt on top of 0.05m dia. x 2.4m iron pipe, 14.2m N. of S.L. of Lake Crest Rd. & 0.6m E. of E.L. of Waverley St.



150 WM	WATERMAIN	150 WM	MTS	M.T.S.	150 mm W.M.	WATERMAIN	150 mm W.M.
	HYDRANT VALVE			CONCRETE		HYDRANT VALVE	
	LAND DRAINAGE SEWER			ASPHALT		LAND DRAINAGE SEWER	
	WASTE WATER SEWER			PLANING		WASTE WATER SEWER	
	MANHOLE			SIDEWALK		MANHOLE	
	CATCH BASIN			PAVING STONES		CATCH BASIN	
	TEST HOLES			PROPERTY LINE		TEST HOLES	
	CULVERT			SURVEY BAR		CULVERT	
	GAS			CURB RAMP		GAS	
	HYDRO			DITCH		HYDRO	
	EXISTING		EXISTING	SWALE		EXISTING	
	LEGEND-PLAN		PROPOSED			PROPOSED	
	LEGEND-PROFILE		EXISTING			EXISTING	
	LEGEND-PROFILE		PROPOSED			PROPOSED	

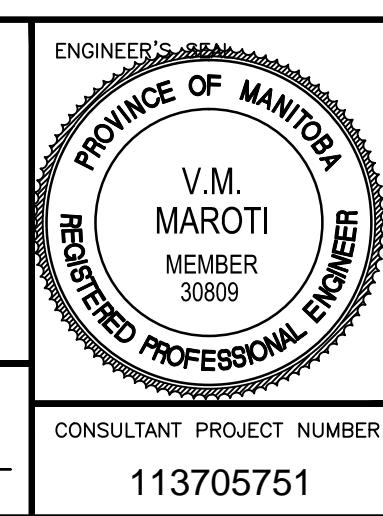
UNDERGROUND STRUCTURES

SUPV. U/G STRUCTURES COMMITTEE DATE

NOTE:
LOCATION OF UNDERGROUND STRUCTURES AS SHOWN ARE BASED ON THE BEST INFORMATION AVAILABLE. BUT NO GUARANTEE IS GIVEN THAT ALL EXISTING UTILITIES ARE SHOWN OR THAT THE GIVEN LOCATIONS ARE EXACT. CONFIRMATION OF EXISTENCE AND EXACT LOCATION OF ALL SERVICES MUST BE OBTAINED FROM THE INDIVIDUAL UTILITIES BEFORE PROCEEDING WITH CONSTRUCTION.

NO.	REVISIONS	DATE	BY	DATE
1	ISSUED FOR TENDER	3/04/08	V.M.M.	
1	ISSUED FOR REVIEW	3/03/27	V.M.M.	
0	ISSUED FOR 90% REVIEW	13/02/22	V.M.M.	

DESIGNED BY	R.T.F., J.D.P.
DRAWN BY	J.D.P.
CHECKED BY	S.B.C.
APPROVED BY	V.M.M.
HOR. SCALE	1:500
VERTICAL	1:20
RELEASED FOR CONSTRUCTION	
DATE	13/02/22



THE CITY OF WINNIPEG PUBLIC WORKS DEPARTMENT

WWARP PART 3 - CONTRACT 1
STA 2+922.4 TO STA 5+935

KENASTON BOULEVARD EXTENSION - NB LANES
PAVING & GRADING - KENASTON BLVD. NB
STA 2+ 922.4 TO STA 3+ 150

CITY DRAWING NUMBER: P-3345-32
SHEET: 32 OF 64
CONSULTANT DRAWING NUMBER: C-221

CONSULTANT PROJECT NUMBER: 113705751