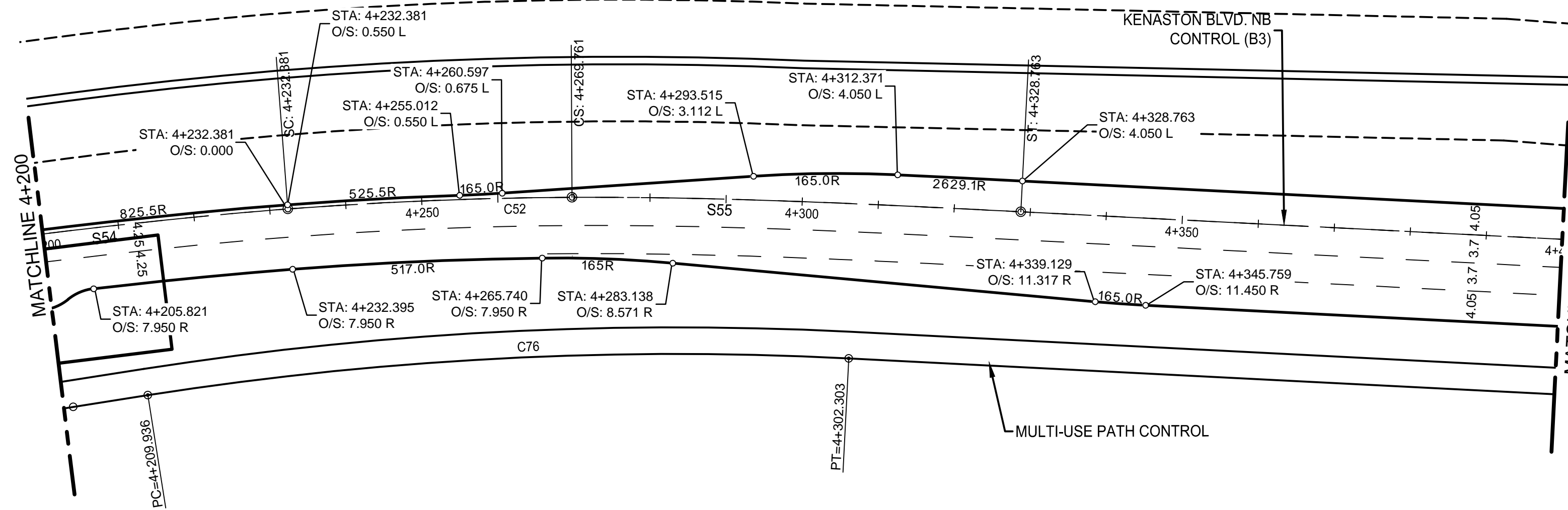
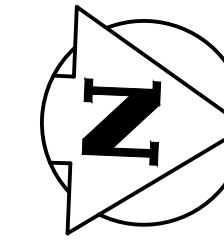
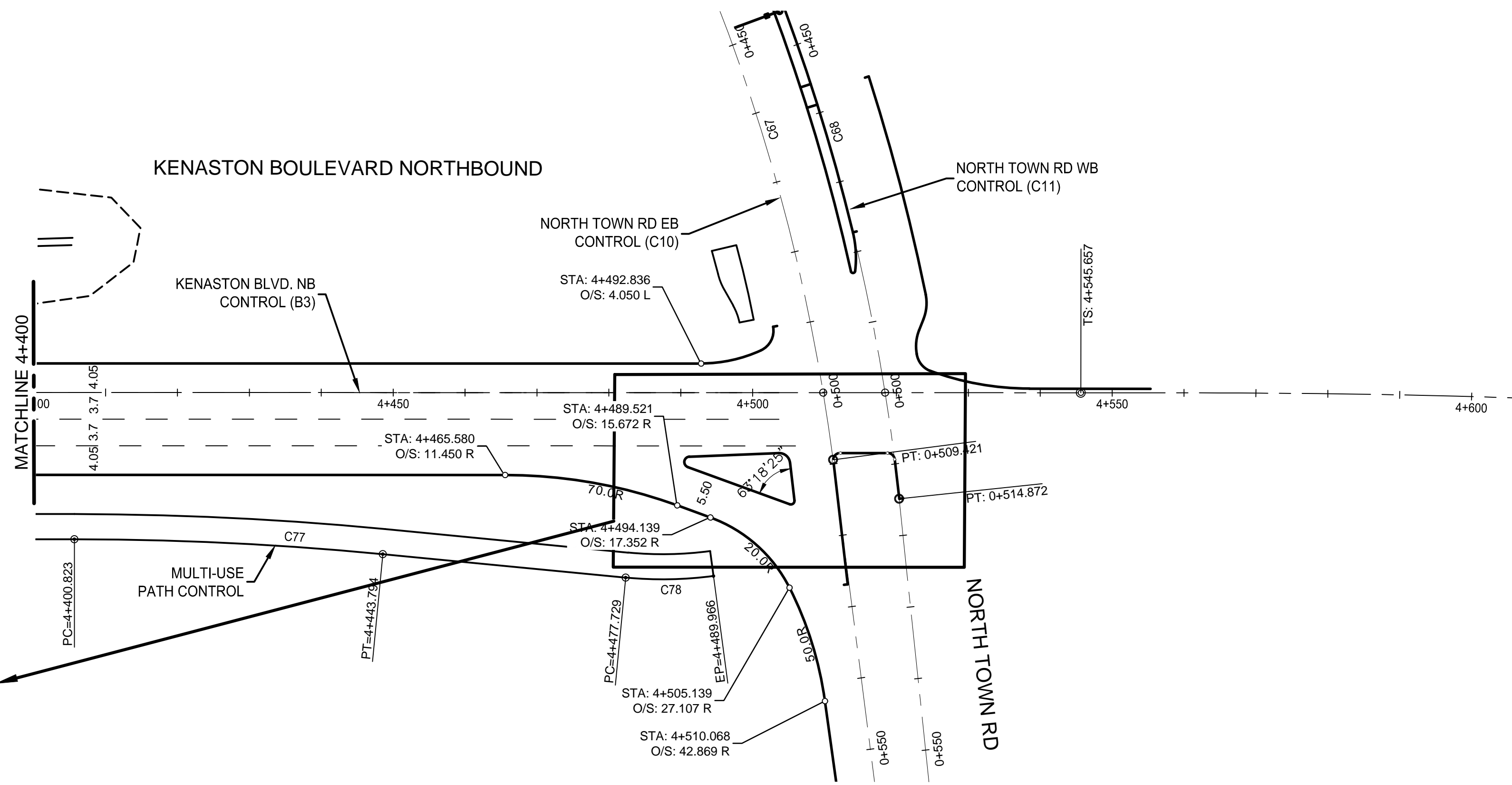
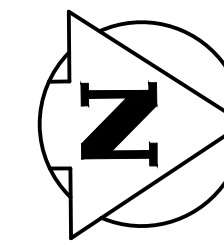


KENASTON BOULEVARD NORTH BOUND

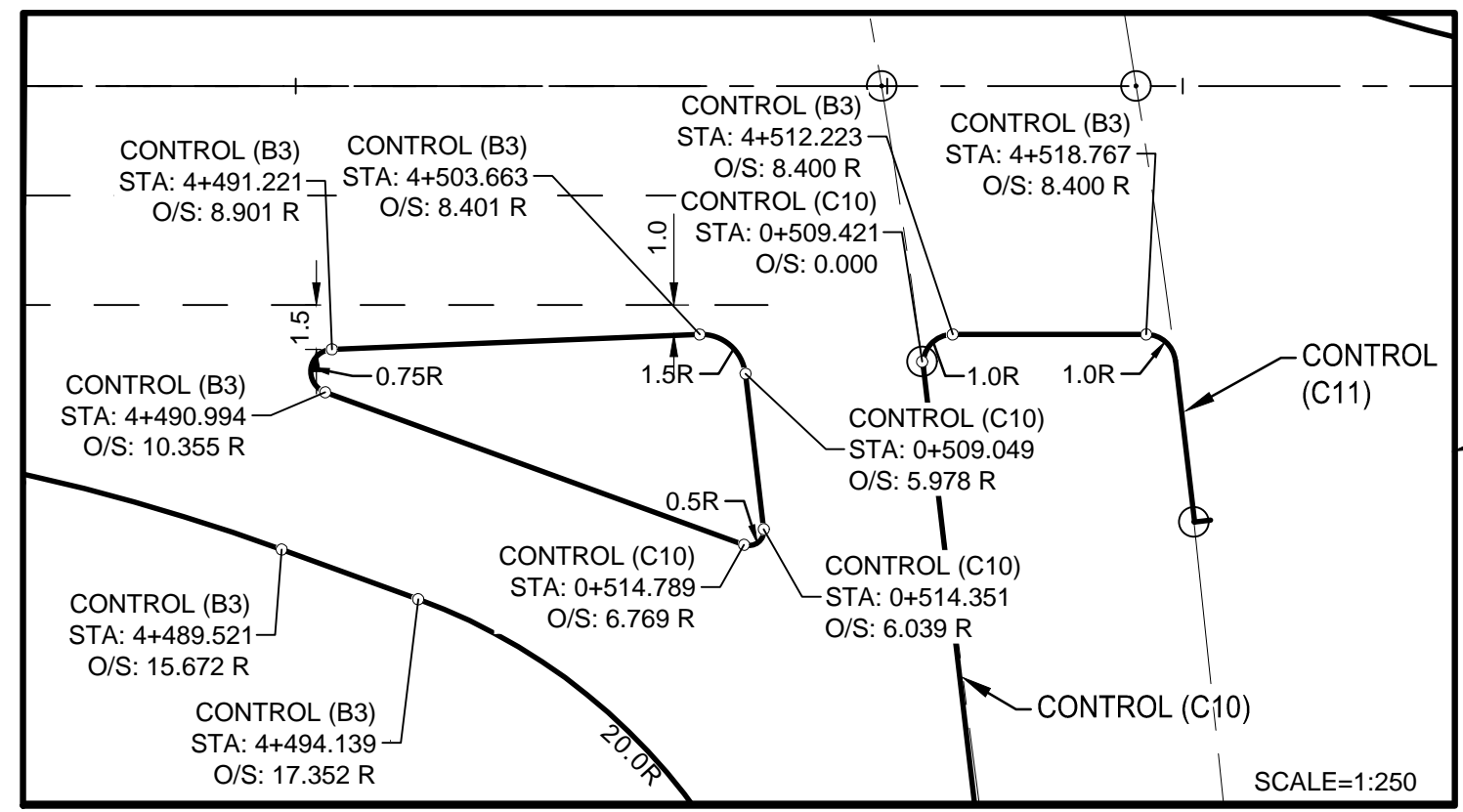


NOTE: SEE SHEET 30 FOR HORIZONTAL CONTROL GEOMETRY DATA TABLES

KENASTON BOULEVARD NORTHBOUND



84R635 - Lake Crest Rd. & Waverley St., Tibl on top of 0.05m dia. x 2.4m iron pipe, 14.2m N. of S.L. of Lake Crest Rd. & 0.6m E. of E.L. of Waverley St.



SCALE=1:250

WARNING

- IF POWER EQUIPMENT OR EXPLOSIVES ARE TO BE USED FOR EXCAVATION ON THIS PROJECT THE CONTRACTOR MUST:
1. NOTIFY THE GAS COMPANY OF THE PROPOSED LOCATION OF EXCAVATION.
 2. TAKE PRECAUTION TO AVOID DAMAGE TO GAS COMPANY INSTALLATIONS SEE PROVINCIAL REGULATION 210/72 FOR DETAILS.
 3. OBTAIN EXCAVATION PERMITS PRIOR TO CONSTRUCTION.

METRIC

WHOLE NUMBERS INDICATE MILLIMETRES
DECIMALIZED NUMBERS INDICATE METRES



UNDERGROUND STRUCTURES SUPV. U/G STRUCTURES COMMITTEE DATE NOTE: LOCATION OF UNDERGROUND STRUCTURES AS SHOWN ARE BASED ON THE BEST INFORMATION AVAILABLE, BUT NO GUARANTEE IS GIVEN THAT ALL EXISTING UTILITIES ARE SHOWN OR THAT THE GIVEN LOCATIONS ARE EXACT. CONFIRMATION OF EXISTENCE AND EXACT LOCATION OF ALL SERVICES MUST BE OBTAINED FROM THE INDIVIDUAL UTILITIES BEFORE PROCEEDING WITH CONSTRUCTION.	B.M. 76-030 ELEV. 232.457m	DESIGNED BY R.T.F., J.D.P.	DESIGN TEAM 	ENGINEER'S SEAL 	THE CITY OF WINNIPEG PUBLIC WORKS DEPARTMENT WWARP PART 3 - CONTRACT 1 STA 2+922.4 TO STA 5+935 KENASTON BOULEVARD EXTENSION - NB LANES HORIZONTAL CONTROL GEOMETRY STA 4+200 TO STA 4+546	CITY DRAWING NUMBER P-3345-29
	DRAWN BY J.D.P.	CHECKED BY S.B.C.	APPROVED BY V.M.M.	HORIZONTAL SCALE 1:500 VERTICAL AS SHOWN		CONSULTANT PROJECT NUMBER 113705751
NO. REVISIONS DATE BY DATE	13/02/22	13/02/22	13/02/22	13/02/22	13/02/22	13/02/22

V:\113705751\drawing\404_working\sheet_files_nb\05751c-121-xx.dwg