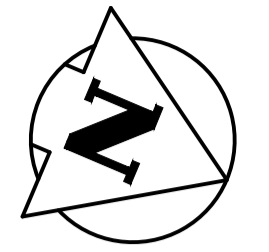
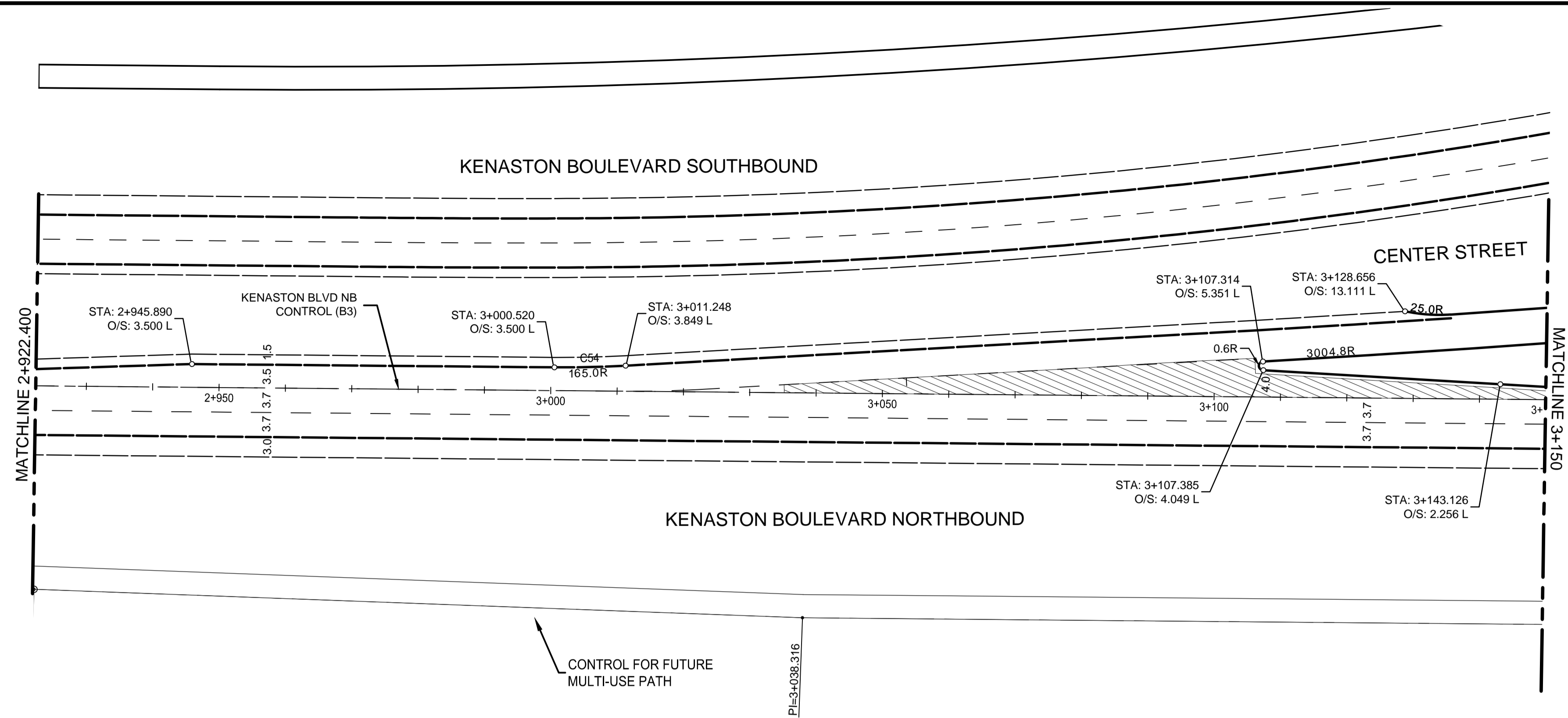
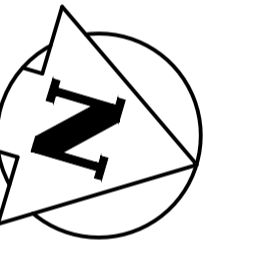
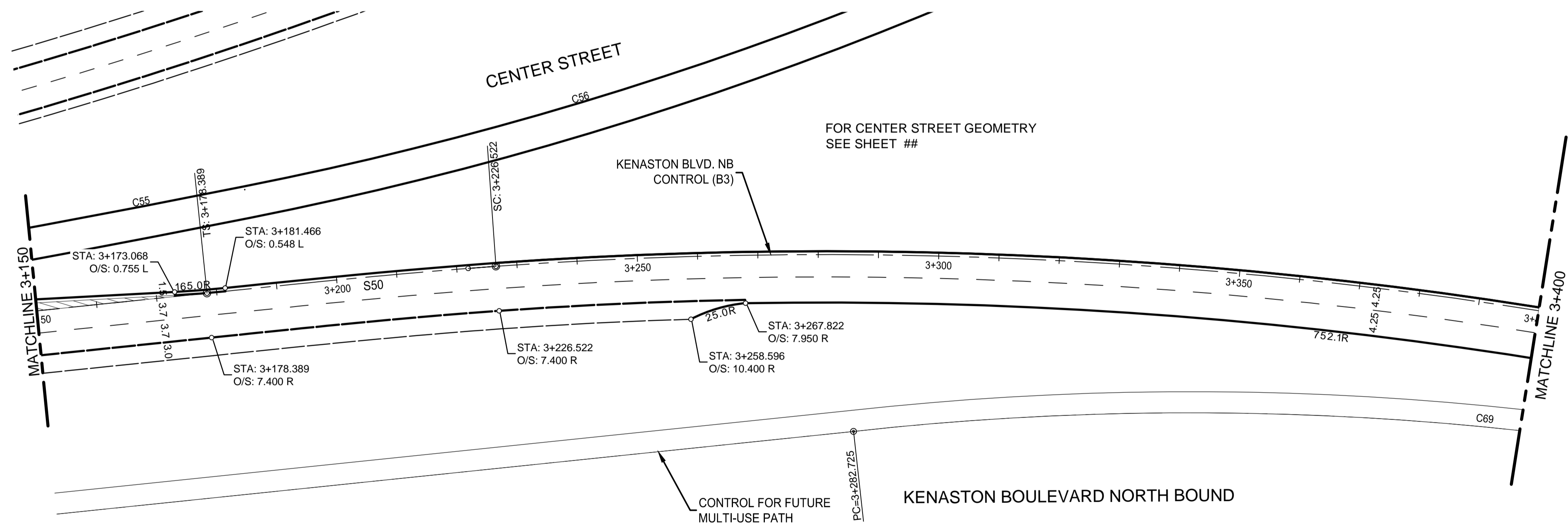


VA\1137\active\113705751\drawing\404_working\sheet_files_nb\05751c-121-xx.dwg



NOTE: SEE SHEET 30 FOR HORIZONTAL CONTROL GEOMETRY DATA TABLES



APEGM
 Certificate of Authorization
 Stantec Consulting Ltd.
 No. 1301

84R635 - Lake Crest Rd. & Waverley St., Tilt on top of 0.05m dia. x 2.4m iron pipe, 14.2m N. of S.L. of Lake Crest Rd. & 0.6m E. of E.L. of Waverley St.

WARNING

- IF POWER EQUIPMENT OR EXPLOSIVES ARE TO BE USED FOR EXCAVATION ON THIS PROJECT THE CONTRACTOR MUST:
1. NOTIFY THE GAS COMPANY OF THE PROPOSED LOCATION OF EXCAVATION.
 2. TAKE PRECAUTION TO AVOID DAMAGE TO GAS COMPANY INSTALLATIONS SEE PROVINCIAL REGULATION 210/72 FOR DETAILS.
 3. OBTAIN EXCAVATION PERMITS PRIOR TO CONSTRUCTION.

METRIC

WHOLE NUMBERS INDICATE MILLIMETRES
 DECIMALIZED NUMBERS INDICATE METRES

UNDERGROUND STRUCTURES	
SUPV. U/G STRUCTURES COMMITTEE	DATE

NOTE:
 LOCATION OF UNDERGROUND STRUCTURES AS SHOWN ARE BASED ON THE BEST INFORMATION AVAILABLE, BUT NO GUARANTEE IS GIVEN THAT ALL EXISTING UTILITIES ARE SHOWN OR THAT THE GIVEN LOCATIONS ARE EXACT. CONFIRMATION OF EXISTENCE AND EXACT LOCATION OF ALL SERVICES MUST BE OBTAINED FROM THE INDIVIDUAL UTILITIES BEFORE PROCEEDING WITH CONSTRUCTION.

B.M. 76-030 ELEV. 232.457m	DESIGNED BY R.T.F., J.D.P.
	DRAWN BY J.D.P.
	CHECKED BY S.B.C.
	APPROVED BY V.M.M.
	HOR. SCALE 1:500
	VERTICAL
	DATE 13/02/22

DESIGN TEAM	DESIGNED BY
	R.T.F., J.D.P.
	DRAWN BY
	J.D.P.
	CHECKED BY
	S.B.C.
	APPROVED BY
	V.M.M.
	HOR. SCALE 1:500
	VERTICAL
	DATE 13/02/22

RELEASER FOR CONSTRUCTION	DATE

ENGINEER'S SEAL
 PROVINCE OF MANITOBA
 REGISTERED PROFESSIONAL ENGINEER

 V.M. MAROTI
 MEMBER 30809
 CONSULTANT PROJECT NUMBER
 113705751

THE CITY OF WINNIPEG
 PUBLIC WORKS DEPARTMENT

 WWARP PART 3 - CONTRACT 1
 STA 2+922.4 TO STA 5+935
 KENASTON BOULEVARD EXTENSION - SB LANES
 HORIZONTAL CONTROL GEOMETRY
 STA 2+922.4 TO STA 3+400

CITY DRAWING NUMBER P-3345-26	SHEET OF 26 OF 64
CONSULTANT DRAWING NUMBER C-121	