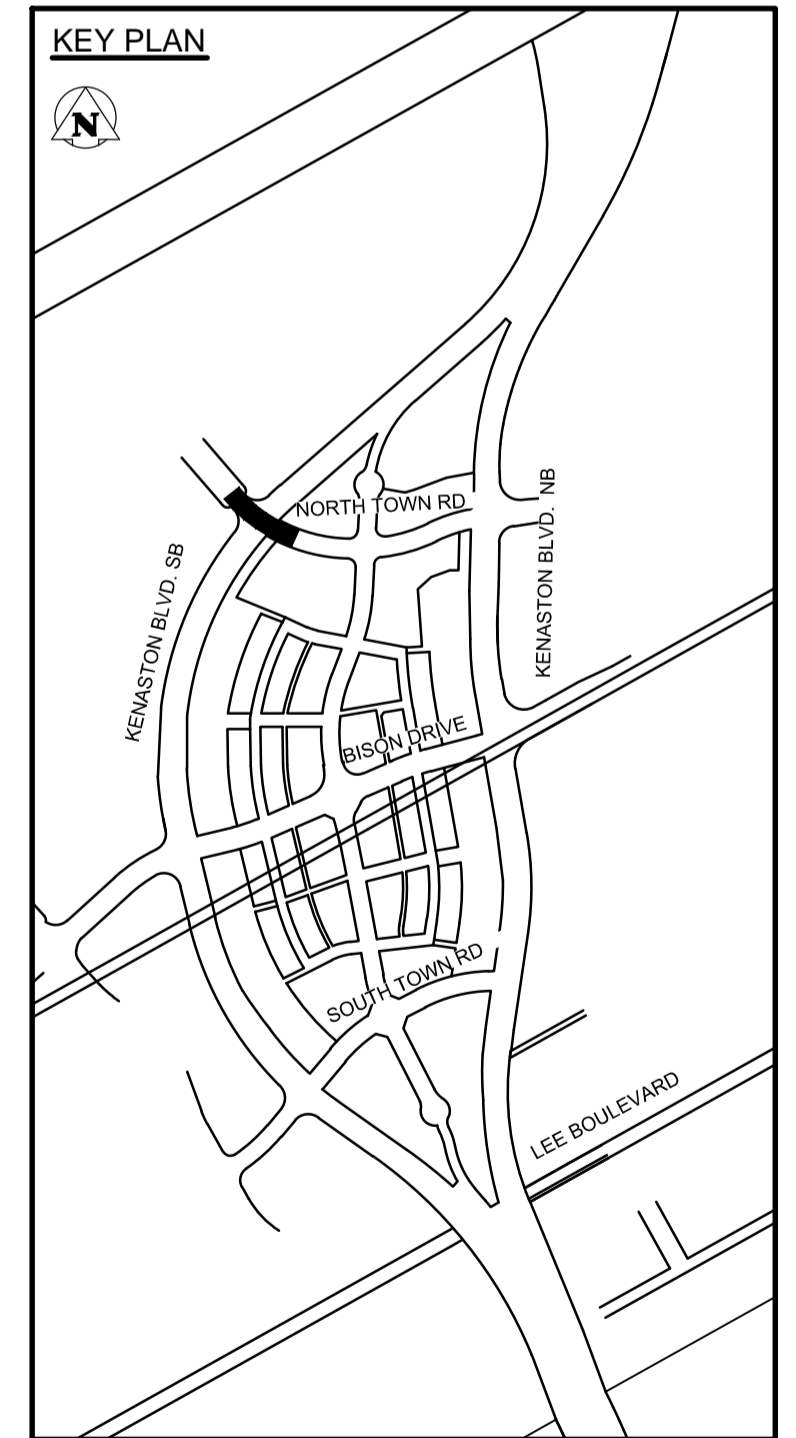
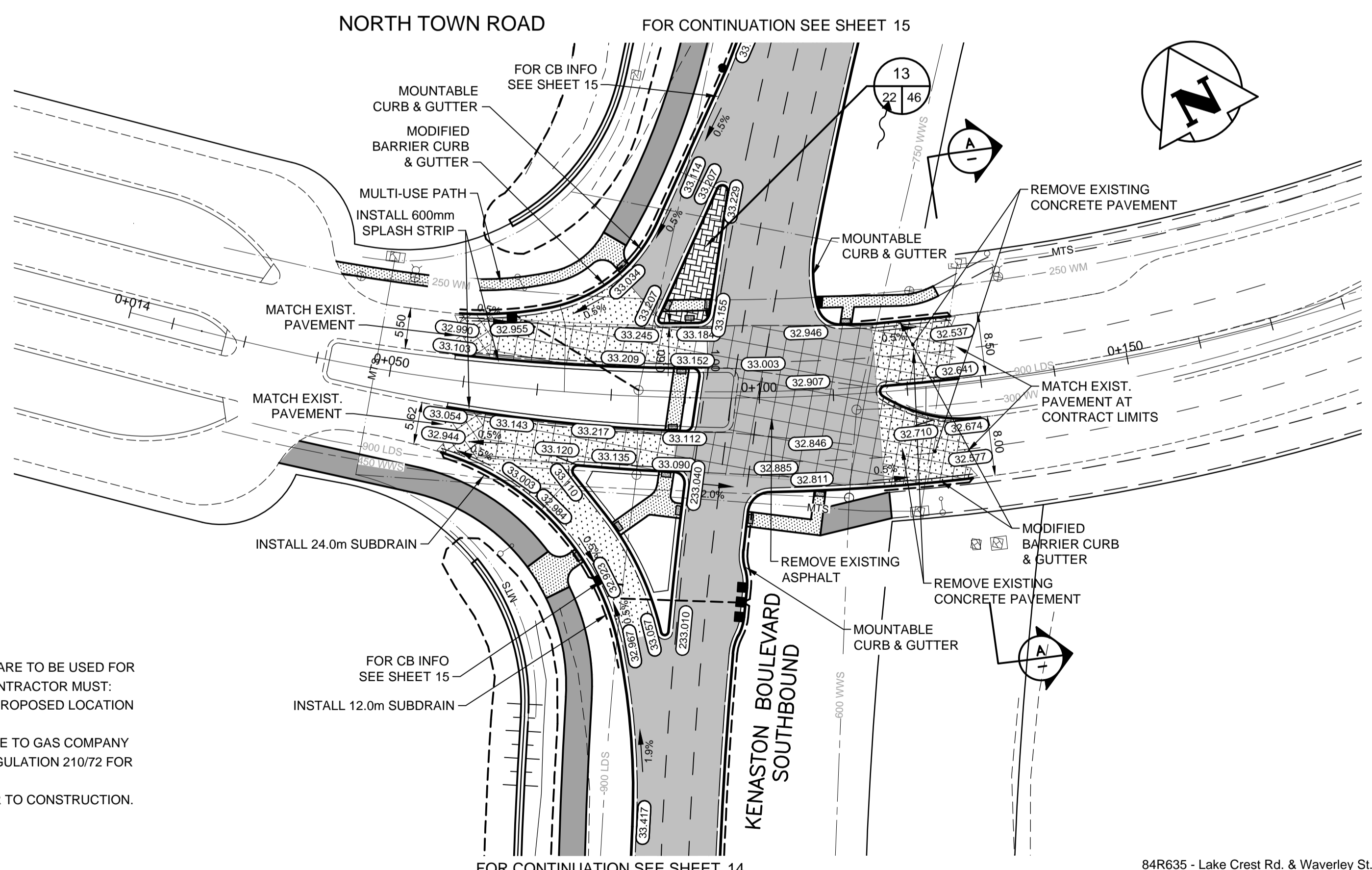


- CONSTRUCTION NOTES:**
- EACH CATCH BASIN (CB) AND CATCH PIT (CP) INSTALLED IN PAVEMENT TO HAVE AP-011 FRAME AND COVER.
 - EACH DITCH INLET CATCH BASIN TO HAVE A DITCH INLET GRATE AS PER DETAIL SHEET 45.
 - CONTRACTOR TO EXPOSE AND VERIFY INVERTS OF ALL JUNCTIONS OR CONNECTIONS TO MAINLINE LDS PRIOR TO INSTALLATION OF CATCH BASINS.
 - CLASS 3 BACKFILL TO BE USED WITHIN 1.0m OF PAVEMENT FOR ALL UNDERGROUND INSTALLATIONS.
 - EXISTING MANHOLES AND CATCH BASINS TO BE ADJUSTED TO DESIGN ELEVATION.
 - 200mm CONCRETE TRANSITION SLABS C/W ASPHALT OVERLAY TO BE INSTALLED WHERE ASPHALT PAVEMENT MATCHES CONCRETE PAVEMENT.
 - ADD 200.00m TO ABBREVIATED ELEVATION TO OBTAIN GEODETIC ELEVATION.



WARNING

- IF POWER EQUIPMENT OR EXPLOSIVES ARE TO BE USED FOR EXCAVATION ON THIS PROJECT THE CONTRACTOR MUST:
- NOTIFY THE GAS COMPANY OF THE PROPOSED LOCATION OF EXCAVATION.
 - TAKE PRECAUTION TO AVOID DAMAGE TO GAS COMPANY INSTALLATIONS SEE PROVINCIAL REGULATION 210/72 FOR DETAILS.
 - OBTAIN EXCAVATION PERMITS PRIOR TO CONSTRUCTION.

METRIC

WHOLE NUMBERS INDICATE MILLIMETRES
DECIMALIZED NUMBERS INDICATE METRES

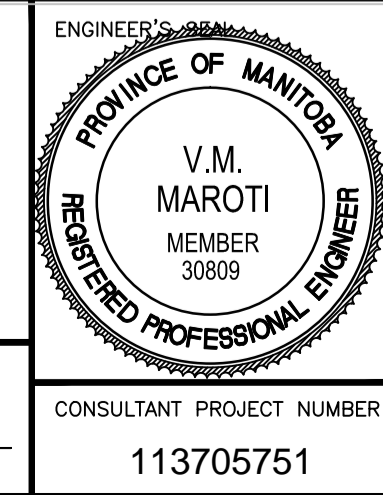
150 WM	WATERMAIN	150 WM	M.T.S.	M.T.S.	150 mm W.M.	WATERMAIN	150 mm W.M.
	HYDRANT				CONCRETE		HYDRANT
	VALVE				ASPHALT		VALVE
	LAND DRAINAGE SEWER				PLANING		LAND DRAINAGE SEWER
	WASTE WATER SEWER				SIDEWALK		WASTE WATER SEWER
	MANHOLE				PAVING STONES		C PROFILE
	CATCH BASIN				PROPERTY LINE		NORTH/WEST GUTTER
	TEST HOLES				SURVEY BAR		SOUTH/EAST GUTTER
	CULVERT				CURB RAMP		NORTH/WEST T/LANE
	GAS				DITCH		SOUTH/EAST T/LANE
	HYDRO				SWALE		
	EXISTING				EXISTING		PROPOSED
	LEGEND-PLAN				LEGEND-PLAN		
					PROPOSED		
					EXISTING		
					LEGEND-PROFILE		
					PROPOSED		
					EXISTING		

UNDERGROUND STRUCTURES

SUPV. U/G STRUCTURES COMMITTEE DATE

NOTE:
LOCATION OF UNDERGROUND STRUCTURES AS SHOWN ARE BASED ON THE BEST INFORMATION AVAILABLE, BUT NO GUARANTEE IS GIVEN THAT ALL EXISTING UTILITIES ARE SHOWN OR THAT THE GIVEN LOCATIONS ARE EXACT. CONFIRMATION OF EXISTENCE AND EXACT LOCATION OF ALL SERVICES MUST BE OBTAINED FROM THE INDIVIDUAL UTILITIES BEFORE PROCEEDING WITH CONSTRUCTION.

84R635 - Lake Crest Rd. & Waverley St., Tilt on top of 0.05m dia. x 2.4m iron pipe, 14.2m N. of S.L. of Lake Crest Rd. & 0.6m E. of E.L. of Waverley St.



THE CITY OF WINNIPEG PUBLIC WORKS DEPARTMENT

WWARP PART 3 - CONTRACT 1
STA 2+922.4 TO STA 5+935

CITY DRAWING NUMBER: P-3345-22
SHEET: 22 OF 64
CONSULTANT DRAWING NUMBER: C-215

KENASTON BOULEVARD EXTENSION - SB LANES
PAVING & GRADING - NORTH TOWN ROAD
STA 0+050 TO STA 0+125

CONSULTANT PROJECT NUMBER: 113705751

B.M. 76-030 ELEV. 232.457m	DESIGNED BY: V.M.M.	DESIGN TEAM	ENGINEER'S SIGNATURE
	DRAWN BY: T.G.		
	CHECKED BY: S.B.C.		
	APPROVED BY: V.M.M.		
	HOR. SCALE: 1:500	RELEASED FOR CONSTRUCTION	
	VERTICAL: 1:20		
	NO. REVISIONS	DATE	BY
		12/12/15	

VA 113705751.dwg 11/30/2015 11:37:05 AM