

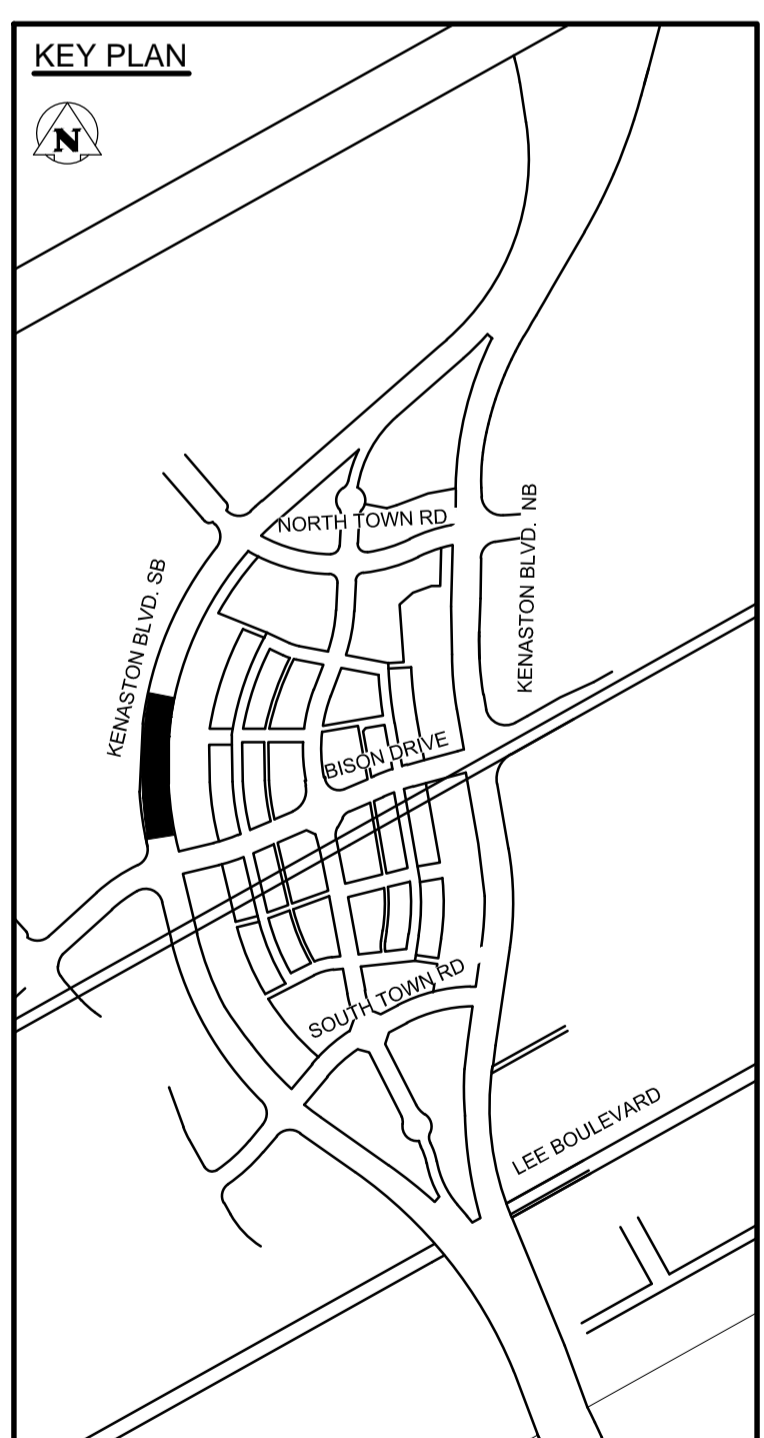
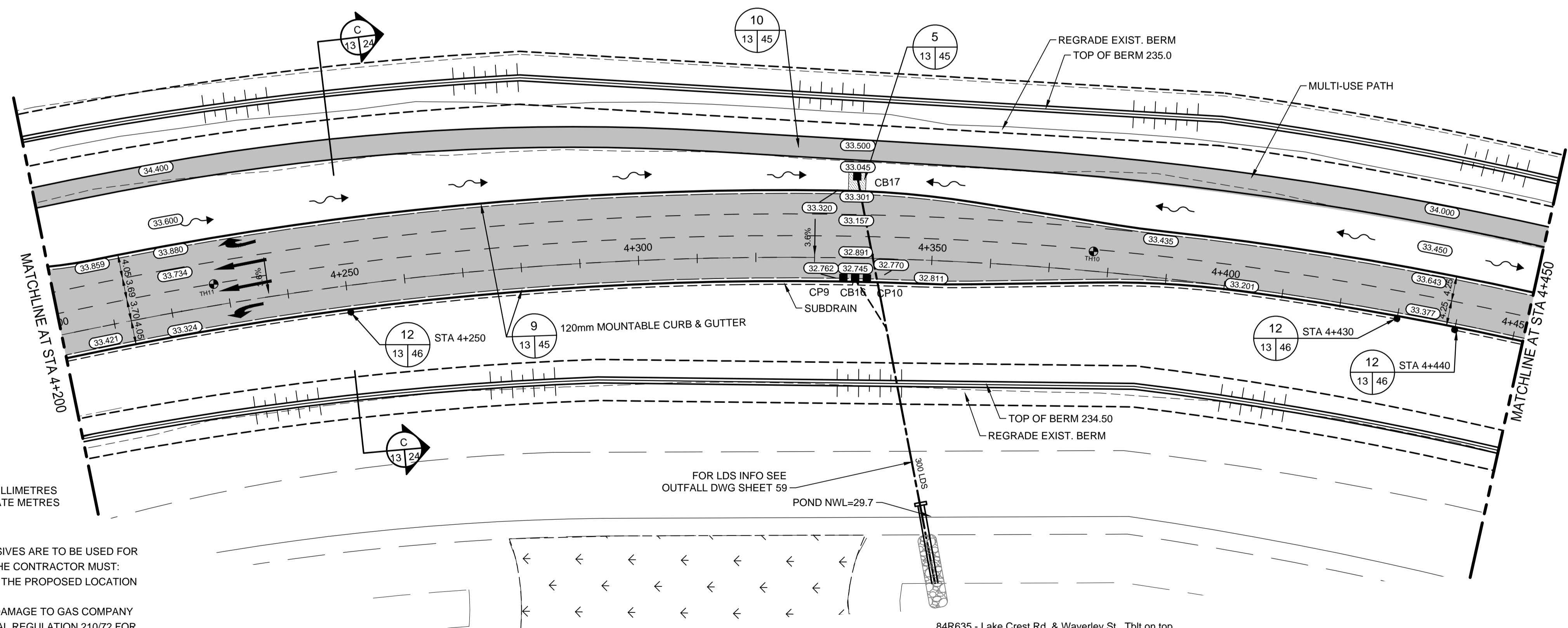
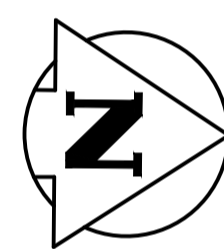
- CONSTRUCTION NOTES:**
- EACH CATCH BASIN (CB) AND CATCH PIT (CP) INSTALLED IN PAVEMENT TO HAVE AP-011 FRAME AND COVER.
 - EACH DITCH INLET CATCH BASIN TO HAVE A DITCH INLET GRATE AS PER DETAIL SHEET 45.
 - CONTRACTOR TO EXPOSE AND VERIFY INVERTS OF ALL JUNCTIONS OR CONNECTIONS TO MAINLINE LDS PRIOR TO INSTALLATION OF CATCH BASINS.
 - CLASS 3 BACKFILL TO BE USED WITHIN 1.0m OF PAVEMENT FOR ALL UNDERGROUND INSTALLATIONS.
 - EXISTING MANHOLES AND CATCH BASINS TO BE ADJUSTED TO DESIGN ELEVATION.
 - INSTALL 200mm PLAIN DOWELLED CONCRETE TRANSITION SLABS C/W ASPHALT OVERLAY WHERE ASPHALT PAVEMENT MATCHES CONCRETE PAVEMENT.
 - ADD 200.00 M TO ABREVIATED ELEVATION TO OBTAIN GEODETIC ELEVATION.

| CATCH BASIN, CATCH PIT, DITCH INLET & MANHOLES STRUCTURE AND LOCATION SCHEDULE | | | | | | | |
|--|-----------|------------------|----------|-----------|-----------|----------|-----------------------|
| TYPE | STATION | O/S FROM CONTROL | RIM ELEV | BOT. ELEV | LEAD INV | MAIN INV | PIPE LEAD |
| CP 9 | 4+334.987 | 4.050 R | 232.755 | 231.855 | N 231.855 | - | 2.0m - 250mm |
| CB 16 | 4+336.987 | 4.050 R | 232.745 | 230.495 | N 231.095 | 230.698 | 9.0m - 300mm/GR=4.41% |
| CP 10 | 4+338.987 | 4.050 R | 232.755 | 231.855 | S 231.855 | - | 2.0m - 250mm |
| CB 17 | 4+336.987 | 13.912 L | 232.920 | 230.670 | E 231.270 | - | 56.6 - 300mm/GR=5.55% |

CP - SD-023, AP-011
 DITCH CB - SD-025, DITCH INLET GRATE

ROAD CB - SD-024, AP-011
 MH - SD-010, AP-004, AP-005

KENASTON BOULEVARD SOUTHBOUND



METRIC

WHOLE NUMBERS INDICATE MILLIMETRES
 DECIMALIZED NUMBERS INDICATE METRES

WARNING

- IF POWER EQUIPMENT OR EXPLOSIVES ARE TO BE USED FOR EXCAVATION ON THIS PROJECT THE CONTRACTOR MUST:
- NOTIFY THE GAS COMPANY OF THE PROPOSED LOCATION OF EXCAVATION.
 - TAKE PRECAUTION TO AVOID DAMAGE TO GAS COMPANY INSTALLATIONS SEE PROVINCIAL REGULATION 210/72 FOR DETAILS.
 - OBTAIN EXCAVATION PERMITS PRIOR TO CONSTRUCTION.

| 150 WM | WATERMAIN | 150 WM | M.T.S. | M.T.S. | 150 mm W.M. | WATERMAIN | 150 mm W.M. |
|----------|---------------------|----------|-----------------------------------|---------------|---------------|---------------|---------------------|
| + | HYDRANT VALVE | + | CONCRETE ASPHALT PLANING SIDEWALK | + | HYDRANT VALVE | + | LAND DRAINAGE SEWER |
| 300 LDS | LAND DRAINAGE SEWER | 300 LDS | PAVING STONES | 300 mm L.D.S. | 300 mm L.D.S. | 300 mm L.D.S. | WASTE WATER SEWER |
| 250 WWS | WASTE WATER SEWER | 250 WWS | PROPERTY LINE SURVEY BAR | 250 mm W.W.S. | 250 mm W.W.S. | 250 mm W.W.S. | WASTE WATER SEWER |
| ○ | MANHOLE | ○ | CURB RAMP | ○ | ○ | ○ | WASTE WATER SEWER |
| □ | CATCH BASIN | □ | DITCH | □ | □ | □ | WASTE WATER SEWER |
| ⊕ | TEST HOLES | ⊕ | SWALE | ⊕ | ⊕ | ⊕ | WASTE WATER SEWER |
| ○ | CULVERT | ○ | EXISTING | ○ | ○ | ○ | WASTE WATER SEWER |
| 100 GAS | GAS | 100 GAS | PROPOSED | 100 GAS | 100 GAS | 100 GAS | WASTE WATER SEWER |
| HYDRO | HYDRO | HYDRO | EXISTING | HYDRO | HYDRO | HYDRO | WASTE WATER SEWER |
| EXISTING | LEGEND-PLAN | PROPOSED | EXISTING | LEGEND-PLAN | PROPOSED | EXISTING | LEGEND-PROFILE |
| | | | | | | | PROPOSED |

UNDERGROUND STRUCTURES

SUPV. U/G STRUCTURES COMMITTEE DATE

NOTE:
 LOCATION OF UNDERGROUND STRUCTURES AS SHOWN ARE BASED ON THE BEST INFORMATION AVAILABLE. BUT NO GUARANTEE IS GIVEN THAT ALL EXISTING UTILITIES ARE SHOWN OR THAT THE GIVEN LOCATIONS ARE EXACT. CONFIRMATION OF EXISTENCE AND EXACT LOCATION OF ALL SERVICES MUST BE OBTAINED FROM THE INDIVIDUAL UTILITIES BEFORE PROCEEDING WITH CONSTRUCTION.

| B.M. | ELEV. | DATE | BY |
|--------|----------|------|----|
| 76-030 | 232.457m | | |

| DESIGNED BY | DESIGN TEAM | ENGINEER'S SIGNATURE |
|------------------|---------------------------|----------------------------------|
| V.M.M., T.G. | | V.M. MAROTI |
| DRAWN BY | | MEMBER 30809 |
| T.G. | | REGISTERED PROFESSIONAL ENGINEER |
| CHECKED BY | | |
| S.B.C. | | |
| APPROVED BY | | |
| V.M.M. | | |
| HOR. SCALE 1:500 | RELEASED FOR CONSTRUCTION | CONSULTANT PROJECT NUMBER |
| VERTICAL 1:20 | | 113705751 |
| DATE 12/11/06 | | |



THE CITY OF WINNIPEG PUBLIC WORKS DEPARTMENT

WWARP PART 3 - CONTRACT 1
 STA 2+922.4 TO STA 5+935

KENASTON BOULEVARD EXTENSION - SB LANES
 PAVING & GRADING - KENASTON BLVD. SB
 STA 4+200 TO STA 4+450

CITY DRAWING NUMBER P-3345-13
 SHEET 13 OF 64
 CONSULTANT DRAWING NUMBER C-206

VA 1137\vertical\113705751\drawing\404_working\sheet_files\05751c-201-xxx.dwg