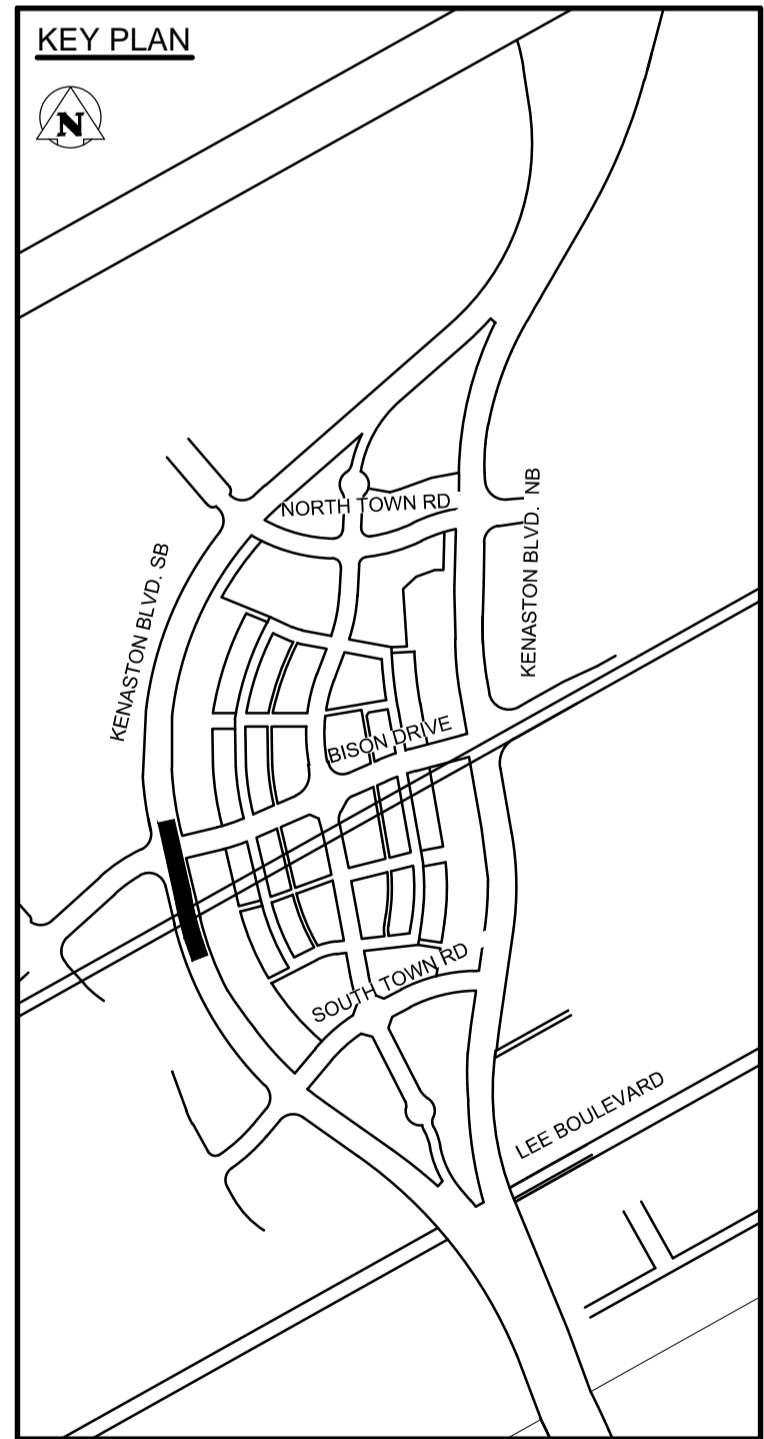
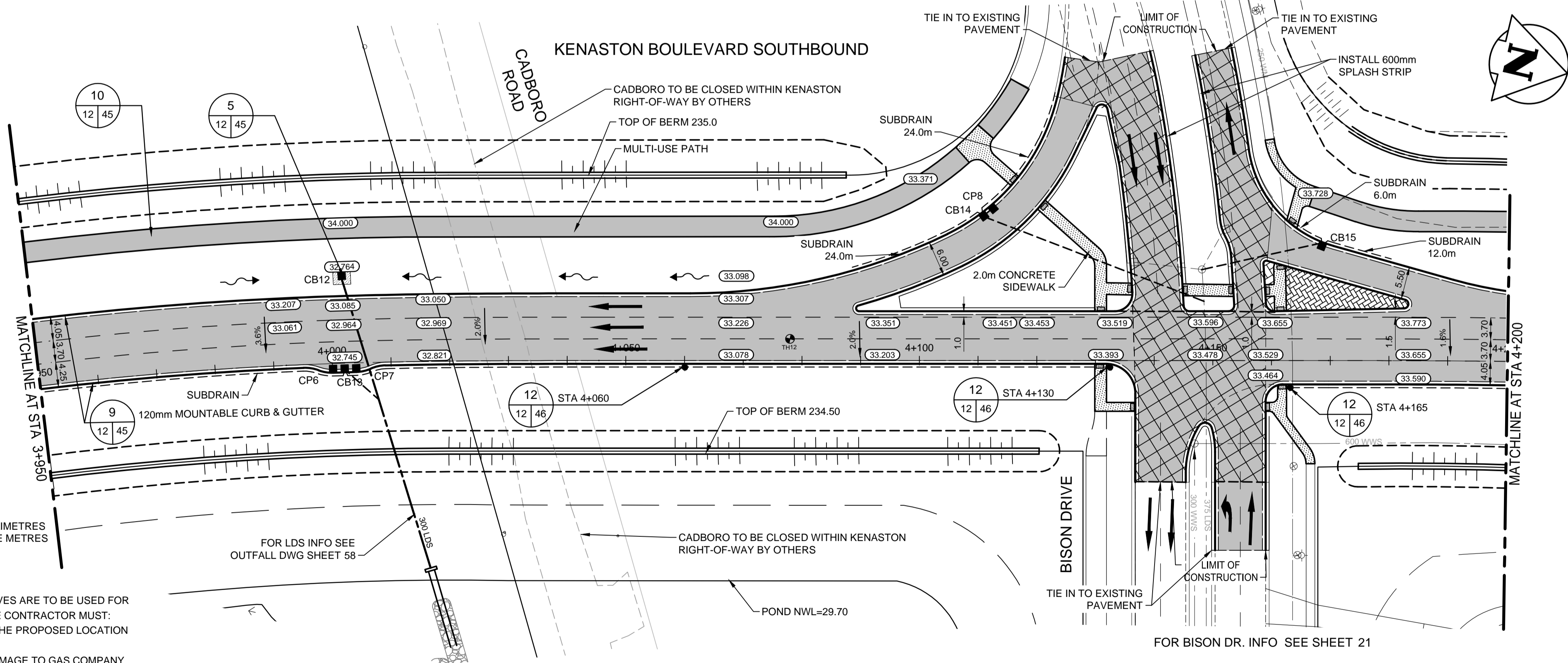


- CONSTRUCTION NOTES:**
- EACH CATCH BASIN (CB) AND CATCH PIT (CP) INSTALLED IN PAVEMENT TO HAVE AP-011 FRAME AND COVER.
 - EACH DITCH INLET CATCH BASIN TO HAVE A DITCH INLET GRATE AS PER DETAIL SHEET 45.
 - CONTRACTOR TO EXPOSE AND VERIFY INVERTS OF ALL JUNCTIONS OR CONNECTIONS TO MAINLINE LDS PRIOR TO INSTALLATION OF CATCH BASINS.
 - CLASS 3 BACKFILL TO BE USED WITHIN 1.0m OF PAVEMENT FOR ALL UNDERGROUND INSTALLATIONS.
 - EXISTING MANHOLES AND CATCH BASINS TO BE ADJUSTED TO DESIGN ELEVATION.
 - INSTALL 200mm PLAIN DOWELLED CONCRETE TRANSITION SLABS C/W ASPHALT OVERLAY WHERE ASPHALT PAVEMENT MATCHES CONCRETE PAVEMENT.
 - ADD 200.00 M TO ABBREVIATED ELEVATION TO OBTAIN GEODETIC ELEVATION.

CATCH BASIN, CATCH PIT, DITCH INLET & MANHOLES STRUCTURE AND LOCATION SCHEDULE						
TYPE	STATION	O/S FROM CONTROL	RIM ELEV	BOT. ELEV	LEAD INV	PIPE LEAD
CB 12	4+002.040	14.885 L	232.765	230.515	E 231.115	50.5m - 300mm/GR=6.31%
CP 6	4+000.067	1.550 R	232.709	231.809	N 231.809	2.0m - 250mm
CB 13	4+002.067	1.550 R	232.699	230.449	E 231.049	229.340 7.4m - 300mm/GR=23.09%
CP 7	4+004.067	1.550 R	232.709	231.809	S 231.809	2.0m - 250mm
CB 14	4+110.614	25.124 L	233.080	230.830	N 231.430	231.070 39.5m - 300mm/GR=0.91%
CP 8	4+112.171	26.373 L	233.090	232.190	E 232.190	2.0m - 250mm
CB 15	4+168.804	20.100 L	233.553	231.303	S 231.903	N 230.990 21.2m - 250mm/GR=4.30%

CP - SD-023, AP-011
DITCH CB - SD-025, DITCH INLET GRATE

ROAD CB - SD-024, AP-011
MH - SD-010, AP-004, AP-005



METRIC
WHOLE NUMBERS INDICATE MILLIMETRES
DECIMALIZED NUMBERS INDICATE METRES

WARNING

- IF POWER EQUIPMENT OR EXPLOSIVES ARE TO BE USED FOR EXCAVATION ON THIS PROJECT THE CONTRACTOR MUST:
- NOTIFY THE GAS COMPANY OF THE PROPOSED LOCATION OF EXCAVATION.
 - TAKE PRECAUTION TO AVOID DAMAGE TO GAS COMPANY INSTALLATIONS SEE PROVINCIAL REGULATION 210/72 FOR DETAILS.
 - OBTAIN EXCAVATION PERMITS PRIOR TO CONSTRUCTION.

V:\1137\active\113705751\drawing\404_working\sheet_files\05751c-201-xxx.dwg

150 W.M.	150 W.M.	M.T.S.	M.T.S.	150 mm W.M.	150 mm W.M.
HYDRANT VALVE	HYDRANT VALVE	CONCRETE	CONCRETE	HYDRANT VALVE	HYDRANT VALVE
LAND DRAINAGE SEWER	LAND DRAINAGE SEWER	ASPHALT	ASPHALT	LAND DRAINAGE SEWER	LAND DRAINAGE SEWER
WASTE WATER SEWER	WASTE WATER SEWER	PLANING	PLANING	WASTE WATER SEWER	WASTE WATER SEWER
MANHOLE	MANHOLE	SIDEWALK	SIDEWALK	WASTE WATER SEWER	WASTE WATER SEWER
CATCH BASIN	CATCH BASIN	PAVING STONES	PAVING STONES	WASTE WATER SEWER	WASTE WATER SEWER
TEST HOLES	TEST HOLES	PROPERTY LINE	PROPERTY LINE	WASTE WATER SEWER	WASTE WATER SEWER
CULVERT	CULVERT	SURVEY BAR	SURVEY BAR	WASTE WATER SEWER	WASTE WATER SEWER
GAS	GAS	CURB RAMP	CURB RAMP	WASTE WATER SEWER	WASTE WATER SEWER
HYDRO	HYDRO	DITCH	DITCH	WASTE WATER SEWER	WASTE WATER SEWER
HYDRO	HYDRO	SWALE	SWALE	WASTE WATER SEWER	WASTE WATER SEWER
EXISTING	LEGEND-PLAN	PROPOSED	EXISTING	LEGEND-PROFILE	PROPOSED

UNDERGROUND STRUCTURES

84R635 - Lake Crest Rd. & Waverley St. T/bt on top of 0.05m dia. x 2.4m iron pipe, 14.2m N. of S.L. of Lake Crest Rd. & 0.6m E. of E.L. of Waverley St.

NO.	REVISIONS	DATE	BY	DATE
2	ISSUED FOR TENDER	3/04/08	V.M.M.	
1	ISSUED FOR REVIEW	3/03/27	V.M.M.	
0	ISSUED FOR 90% REVIEW	3/02/22	V.M.M.	

DESIGNED BY	V.M.M., T.G.
DRAWN BY	T.G.
CHECKED BY	S.B.C.
APPROVED BY	V.M.M.
HOR. SCALE	1:500
VERTICAL	1:20
DATE	12/11/06

APCGM
Certificate of Authorization
Stantec Consulting Ltd.
No. 1301

THE CITY OF WINNIPEG
PUBLIC WORKS DEPARTMENT

WWARP PART 3 - CONTRACT 1
STA 2+922.4 TO STA 5+935

KENASTON BOULEVARD EXTENSION - SB LANES
PAVING & GRADING - KENASTON BLVD. SB
STA 3+950 TO STA 4+200

CITY DRAWING NUMBER: P-3345-12
SHEET: 12 OF 64
CONSULTANT DRAWING NUMBER: C-205

CONSULTANT PROJECT NUMBER: 113705751