

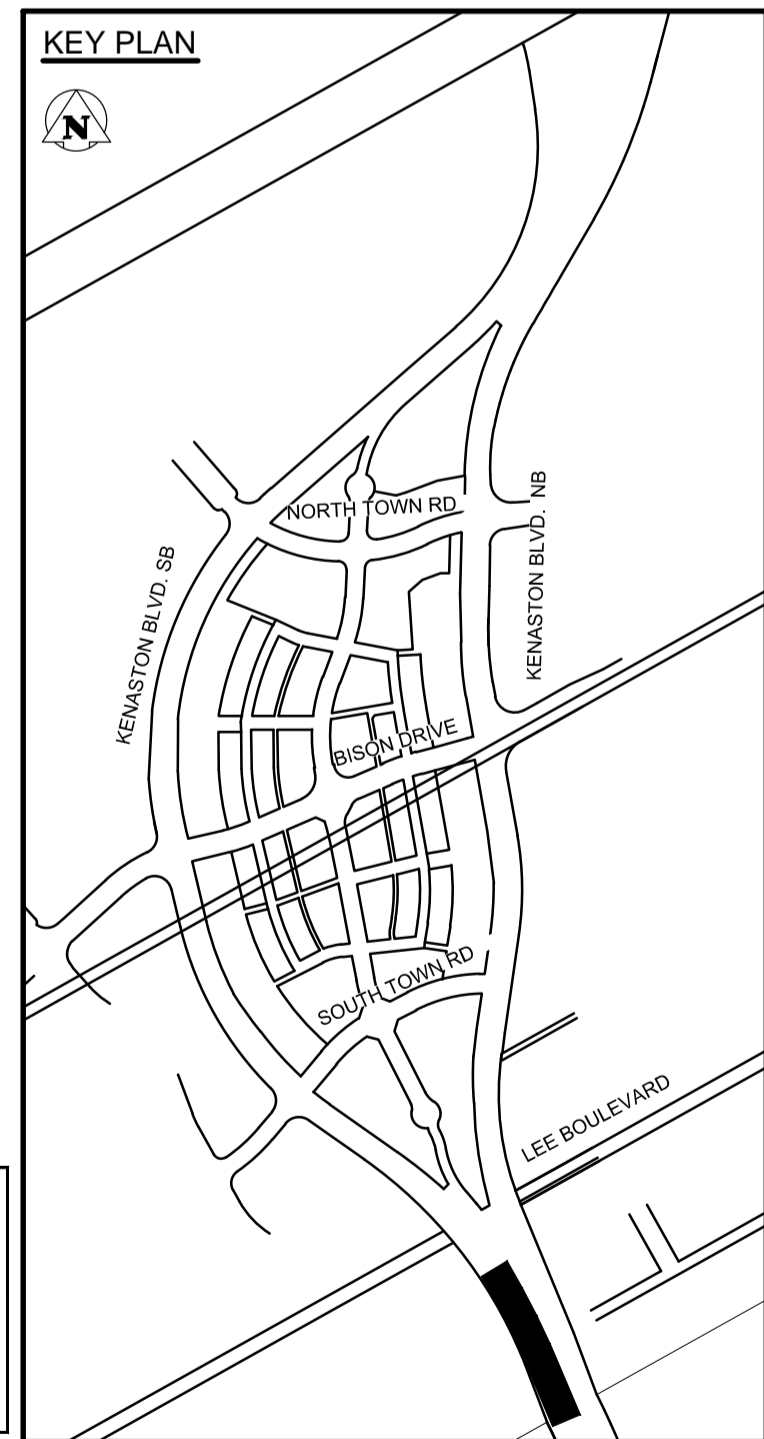
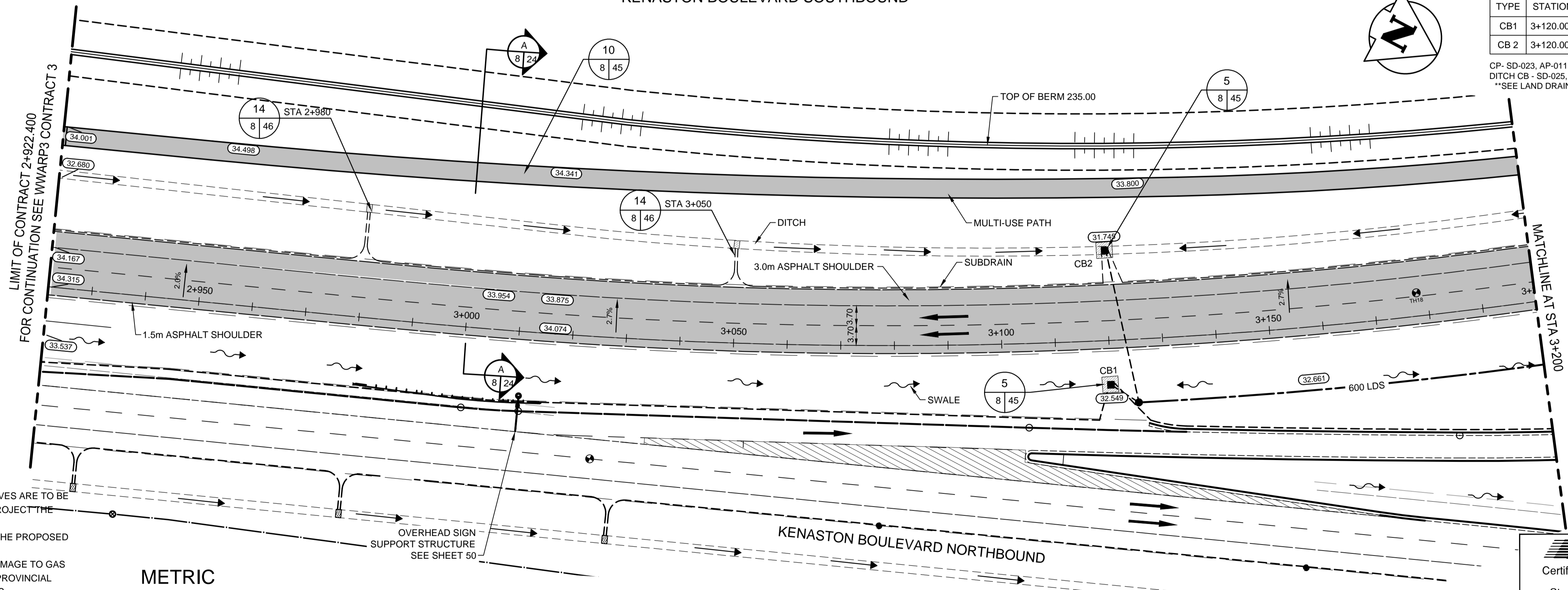
- CONSTRUCTION NOTES:**
- EACH CATCH BASIN (CB) AND CATCH PIT (CP) INSTALLED IN PAVEMENT TO HAVE AP-011 FRAME AND COVER.
 - EACH DITCH INLET CATCH BASIN TO HAVE A DITCH INLET GRATE AS PER DETAIL SHEET 45.
 - CONTRACTOR TO EXPOSE AND VERIFY INVERTS OF ALL JUNCTIONS OR CONNECTIONS TO MAINLINE LDS PRIOR TO INSTALLATION OF CATCH BASINS.
 - CLASS 3 BACKFILL TO BE USED WITHIN 1.0m OF PAVEMENT FOR ALL UNDERGROUND INSTALLATIONS.
 - EXISTING MANHOLES AND CATCH BASINS TO BE ADJUSTED TO DESIGN ELEVATION.
 - INSTALL 200mm PLAIN DOWELED CONCRETE TRANSITION SLABS CW ASPHALT OVERLAY WHERE ASPHALT PAVEMENT MATCHES CONCRETE PAVEMENT.
 - ADD 200.00 M TO ABBREVIATED ELEVATION TO OBTAIN GEODETIC ELEVATION.

KENASTON BOULEVARD SOUTHBOUND

CATCH BASIN, CATCH PIT, DITCH INLET & MANHOLES STRUCTURE AND LOCATION SCHEDULE							
TYPE	STATION	O/S FROM CONTROL	RIM ELEV	BOT. ELEV	LEAD INV	MAIN INV	PIPE LEAD
CB1	3+120.000	8.255 R	232.549	230.299	N 230.899	229.625	6.0m - 300mm/GR=21.23%
CB2	3+120.000	16.812 L	231.745	229.495	E 230.095	229.625	28.5m - 300mm/GR=1.65%

CP- SD-023, AP-011
DITCH CB - SD-025, DITCH INLET GRATE
**SEE LAND DRAINAGE DRAWINGS FOR MH INFORMATION

ROAD CB - SD-024, AP-011
MH - SD-010, AP-004, AP-005



WARNING

- IF POWER EQUIPMENT OR EXPLOSIVES ARE TO BE USED FOR EXCAVATION ON THIS PROJECT THE CONTRACTOR MUST:
- NOTIFY THE GAS COMPANY OF THE PROPOSED LOCATION OF EXCAVATION.
 - TAKE PRECAUTION TO AVOID DAMAGE TO GAS COMPANY INSTALLATIONS SEE PROVINCIAL REGULATION 210/72 FOR DETAILS.
 - OBTAIN EXCAVATION PERMITS PRIOR TO CONSTRUCTION.

METRIC

WHOLE NUMBERS INDICATE MILLIMETRES
DECIMALIZED NUMBERS INDICATE METRES

150 W.M.	WATERMAIN	150 W.M.	M.T.S.	M.T.S.	150 mm W.M.	WATERMAIN	150 mm W.M.
+	HYDRANT VALVE	+	CONCRETE ASPHALT PLANING	+	HYDRANT VALVE	+	LAND DRAINAGE SEWER
+	LAND DRAINAGE SEWER	+	SIDEWALK	+	WASTE WATER SEWER	+	WASTE WATER SEWER
+	WASTE WATER SEWER	+	PAVING STONES	+	PROPERTY LINE	+	PROPERTY LINE
+	MANHOLE	+	SURVEY BAR	+	CURB RAMP	+	CURB RAMP
+	CATCH BASIN	+	DITCH	+	SWALE	+	SWALE
+	TEST HOLES	+	SWALE	+	SWALE	+	SWALE
+	CULVERT	+	SWALE	+	SWALE	+	SWALE
+	GAS	+	SWALE	+	SWALE	+	SWALE
+	HYDRO	+	SWALE	+	SWALE	+	SWALE
+	HYDRO	+	SWALE	+	SWALE	+	SWALE

UNDERGROUND STRUCTURES

SUPV. U/G STRUCTURES COMMITTEE DATE

NOTE:
LOCATION OF UNDERGROUND STRUCTURES AS SHOWN ARE BASED ON THE BEST INFORMATION AVAILABLE. BUT NO GUARANTEE IS GIVEN THAT ALL EXISTING UTILITIES ARE SHOWN OR THAT THE GIVEN LOCATIONS ARE EXACT. CONFIRMATION OF EXISTENCE AND EXACT LOCATION OF ALL SERVICES MUST BE OBTAINED FROM THE INDIVIDUAL UTILITIES BEFORE PROCEEDING WITH CONSTRUCTION.

84R635 - Lake Crest Rd. & Waverley St., Tbit on top of 0.05m dia. x 2.4m iron pipe, 14.2m N. of S.L. of Lake Crest Rd. & 0.6m E. of E.L. of Waverley St.

NO.	REVISIONS	DATE	BY
1	ISSUED FOR TENDER	13/04/08	V.M.M.
2	ISSUED FOR REVIEW	13/03/27	V.M.M.
3	ISSUED FOR 90% REVIEW	13/02/22	V.M.M.

DESIGNED BY	DESIGN TEAM
V.M.M., T.G.	
DRAWN BY	T.G.
CHECKED BY	S.B.C.
APPROVED BY	V.M.M.

HOR. SCALE	RELEASED FOR CONSTRUCTION
1:500	
VERTICAL	1:20
DATE	12/11/06

ENGINEER'S SEAL

PROVINCE OF MANITOBA REGISTERED PROFESSIONAL ENGINEER

V.M. MAROTI MEMBER 30809

CONSULTANT PROJECT NUMBER 113705751

THE CITY OF WINNIPEG PUBLIC WORKS DEPARTMENT

WWARP PART 3 - CONTRACT 1
STA 2+922.4 TO STA 5+935

KENASTON BOULEVARD EXTENSION - SB LANES
PAVING & GRADING - KENASTON BLVD. SB
STA 2+922.4 TO STA 3+200

CITY DRAWING NUMBER P-3345-8
SHEET 8 OF 64
CONSULTANT DRAWING NUMBER C-201

VA 1137\vertical\113705751\drawing\404_working\sheet_files\05751c-201-xxx.dwg