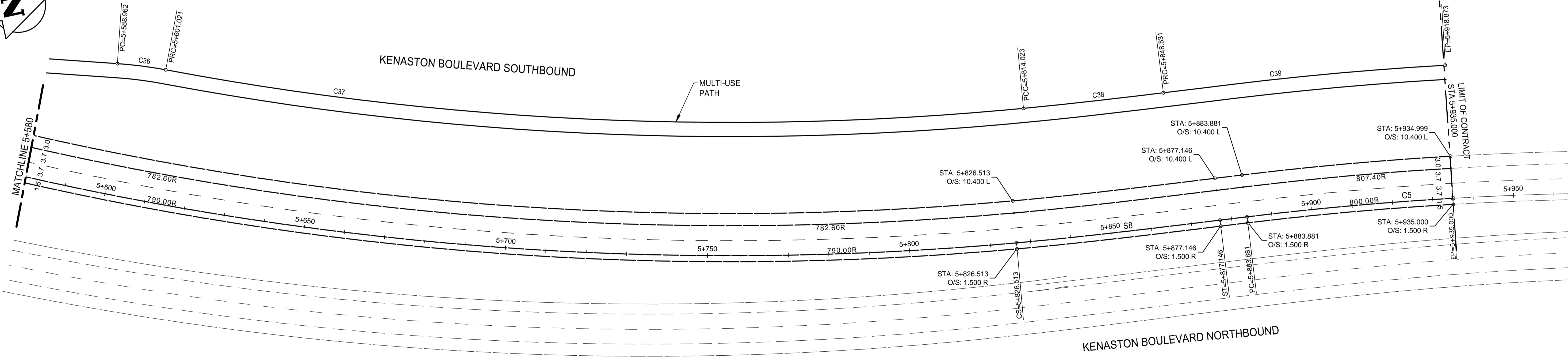
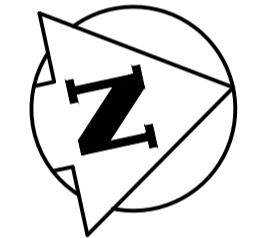


NOTE: SEE SHEET 7 FOR HORIZONTAL CONTROL GEOMETRY DATA TABLES



**WARNING**

IF POWER EQUIPMENT OR EXPLOSIVES ARE TO BE USED FOR EXCAVATION ON THIS PROJECT THE CONTRACTOR MUST:

1. NOTIFY THE GAS COMPANY OF THE PROPOSED LOCATION OF EXCAVATION.
2. TAKE PRECAUTION TO AVOID DAMAGE TO GAS COMPANY INSTALLATIONS SEE PROVINCIAL REGULATION 210/72 FOR DETAILS.
3. OBTAIN EXCAVATION PERMITS PRIOR TO CONSTRUCTION.

**METRIC**

WHOLE NUMBERS INDICATE MILLIMETRES  
DECIMALIZED NUMBERS INDICATE METRES

84R635 - Lake Crest Rd. & Waverley St., Tilt on top of 0.05m dia. x 2.4m iron pipe, 14.2m N. of S.L. of Lake Crest Rd. & 0.6m E. of E.L. of Waverley St.



**THE CITY OF WINNIPEG**  
 PUBLIC WORKS DEPARTMENT  
 Winnipeg  
**WWARP PART 3 - CONTRACT 1**  
 STA 2+922.4 TO STA 5+935  
 KENASTON BOULEVARD EXTENSION - SB LANES  
 HORIZONTAL CONTROL GEOMETRY  
 STA 5+210 TO STA 5+935  
 CITY DRAWING NUMBER: P-3345-6  
 SHEET: 6 OF 64  
 CONSULTANT DRAWING NUMBER: C-105

UNDERGROUND STRUCTURES  SUPV. U/G STRUCTURES COMMITTEE DATE  NOTE: LOCATION OF UNDERGROUND STRUCTURES AS SHOWN ARE BASED ON THE BEST INFORMATION AVAILABLE, BUT NO GUARANTEE IS GIVEN THAT ALL EXISTING UTILITIES ARE SHOWN OR THAT THE GIVEN LOCATIONS ARE EXACT. CONFIRMATION OF EXISTENCE AND EXACT LOCATION OF ALL SERVICES MUST BE OBTAINED FROM THE INDIVIDUAL UTILITIES BEFORE PROCEEDING WITH CONSTRUCTION.	B.M. 76-030 ELEV. 232.457m	DESIGNED BY: V.M.M., T.G. DRAWN BY: T.G. CHECKED BY: S.B.C. APPROVED BY: V.M.M.	DESIGN TEAM 	ENGINEER'S SEAL 
	2 ISSUED FOR TENDER 3/04/08 V.M.M. 1 ISSUED FOR REVIEW 3/03/27 V.M.M. 0 ISSUED FOR 90% REVIEW 13/02/22 V.M.M.	HOR. SCALE 1:500 VERTICAL	RELEASED FOR CONSTRUCTION DATE	CONSULTANT PROJECT NUMBER 113705751
	NO. REVISIONS DATE BY DATE 12/12/15			

V:\1137\active\113705751\drawing\404\_working\sheet\_files\05751c-101-xxx.dwg