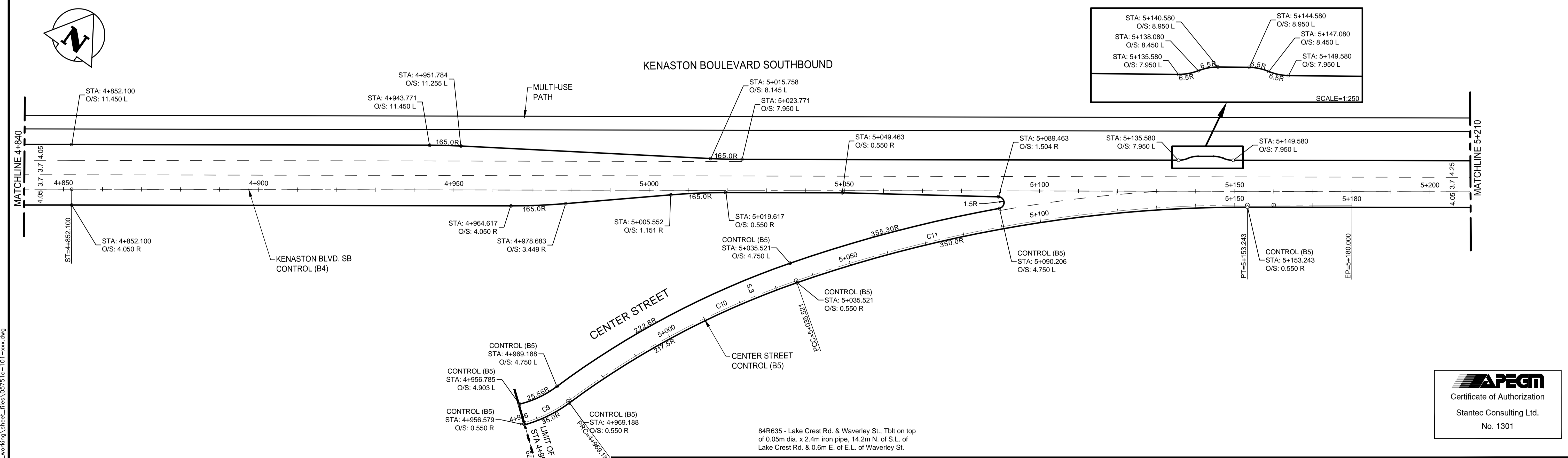
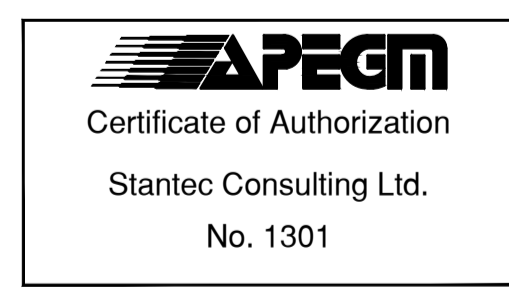


NOTE: SEE SHEET 7 FOR HORIZONTAL CONTROL GEOMETRY DATA TABLES



V:\1137\active\113705751\drawing\404\_working\sheet\_files\05751c-101-xxx.dwg

**METRIC**  
WHOLE NUMBERS INDICATE MILLIMETRES  
DECIMALIZED NUMBERS INDICATE METRES



84R635 - Lake Crest Rd. & Waverley St., Tilt on top of 0.05m dia. x 2.4m iron pipe, 14.2m N. of S.L. of Lake Crest Rd. & 0.6m E. of E.L. of Waverley St.

UNDERGROUND STRUCTURES  SUPV. U/G STRUCTURES COMMITTEE DATE  NOTE: LOCATION OF UNDERGROUND STRUCTURES AS SHOWN ARE BASED ON THE BEST INFORMATION AVAILABLE, BUT NO GUARANTEE IS GIVEN THAT ALL EXISTING UTILITIES ARE SHOWN OR THAT THE GIVEN LOCATIONS ARE EXACT. CONFIRMATION OF EXISTENCE AND EXACT LOCATION OF ALL SERVICES MUST BE OBTAINED FROM THE INDIVIDUAL UTILITIES BEFORE PROCEEDING WITH CONSTRUCTION.	B.M. 76-030 ELEV. 232.457m	DESIGNED BY V.M.M., T.G.	DESIGN TEAM 	ENGINEER'S SEAL 	<b>THE CITY OF WINNIPEG</b> PUBLIC WORKS DEPARTMENT  <b>WWARP PART 3 - CONTRACT 1</b> STA 2+922.4 TO STA 5+935  KENASTON BOULEVARD EXTENSION - SB LANES HORIZONTAL CONTROL GEOMETRY STA 4+630 TO STA 5+210	CITY DRAWING NUMBER P-3345-5
	2 ISSUED FOR TENDER 3/04/08 V.M.M. 1 ISSUED FOR REVIEW 3/03/27 V.M.M. 0 ISSUED FOR 90% REVIEW 13/02/22 V.M.M.	DRAWN BY T.G.  CHECKED BY S.B.C.  APPROVED BY V.M.M.	HOR. SCALE 1:500 VERTICAL ---	RELEASED FOR CONSTRUCTION  CONSULTANT PROJECT NUMBER 113705751		SHEET 5 OF 64 CONSULTANT DRAWING NUMBER C-104