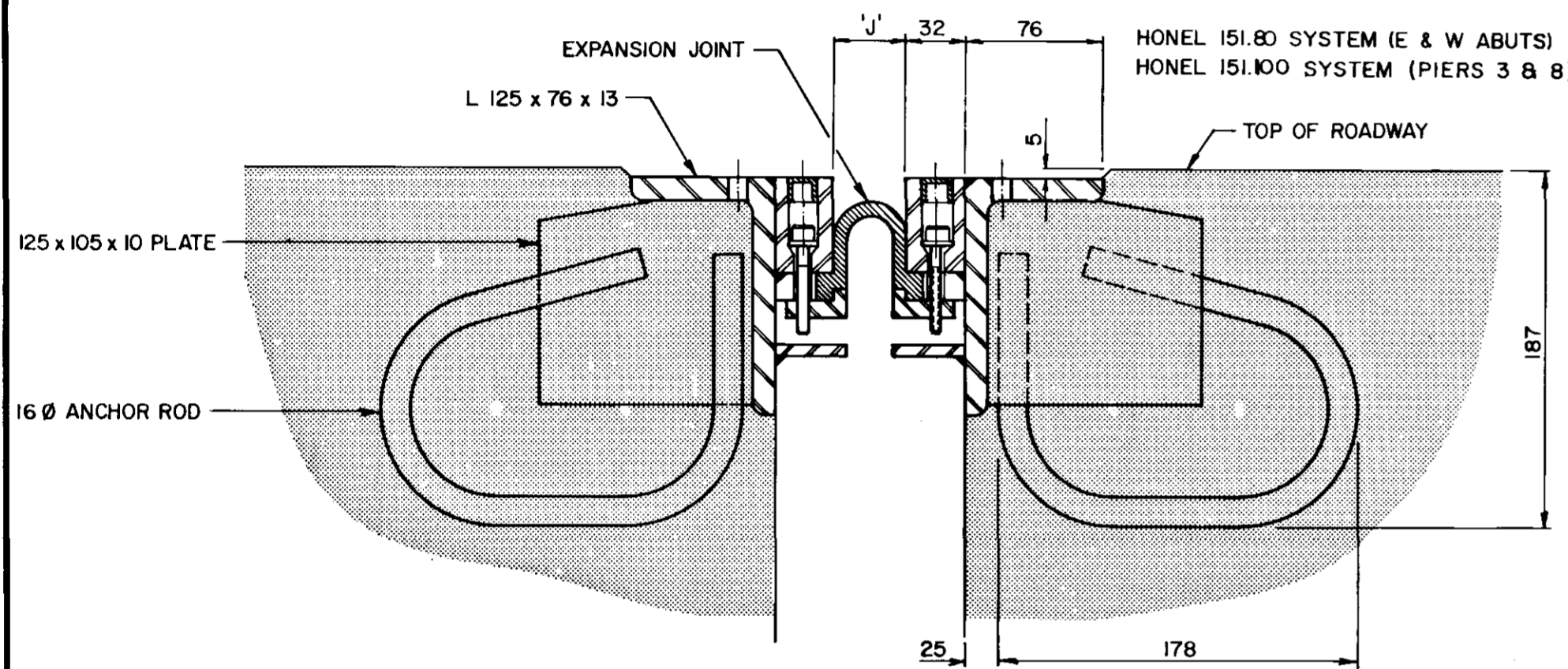


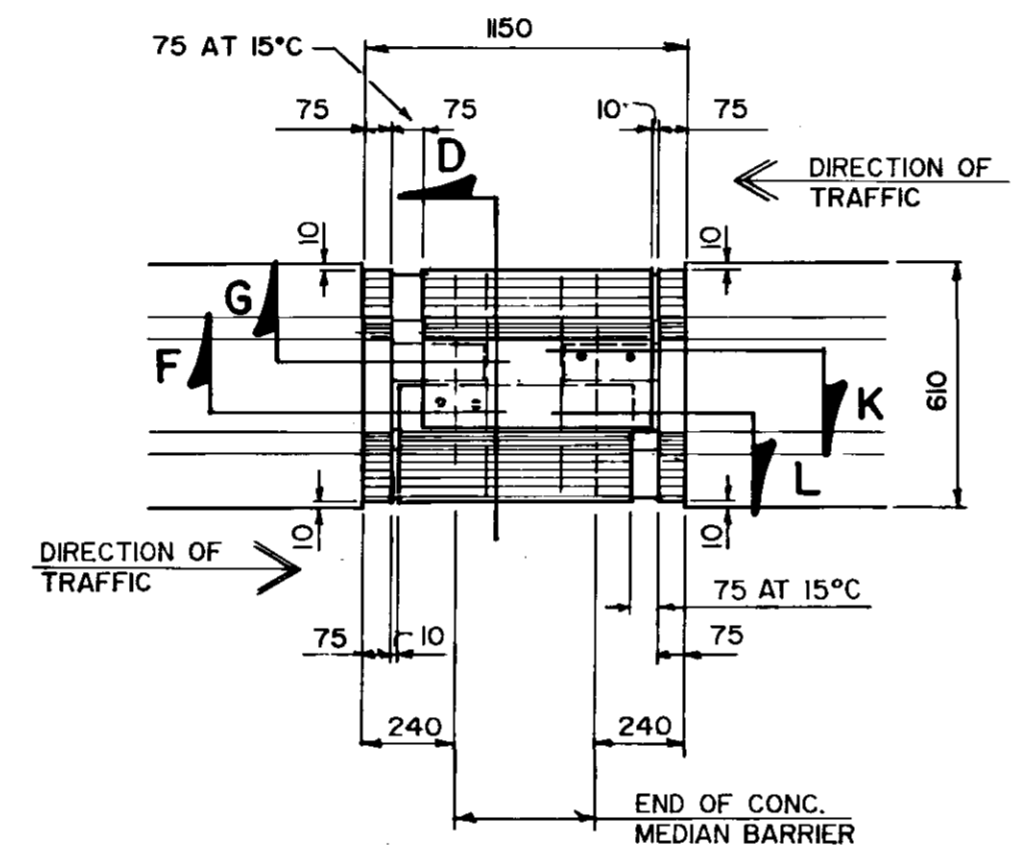
DIMENSIONS	'X'	'Y'	'Z'
CL W. ABUT. BRG'S	176	83	566
CL E. ABUT. BRG'S	285	237	576
CL PIER 3	484	484	595
CL PIER 8	484	484	595

ELEVATION - EXPANSION JOINT ASSEMBLY

SCALE 1 : 20



SECTION A
N.T.S.

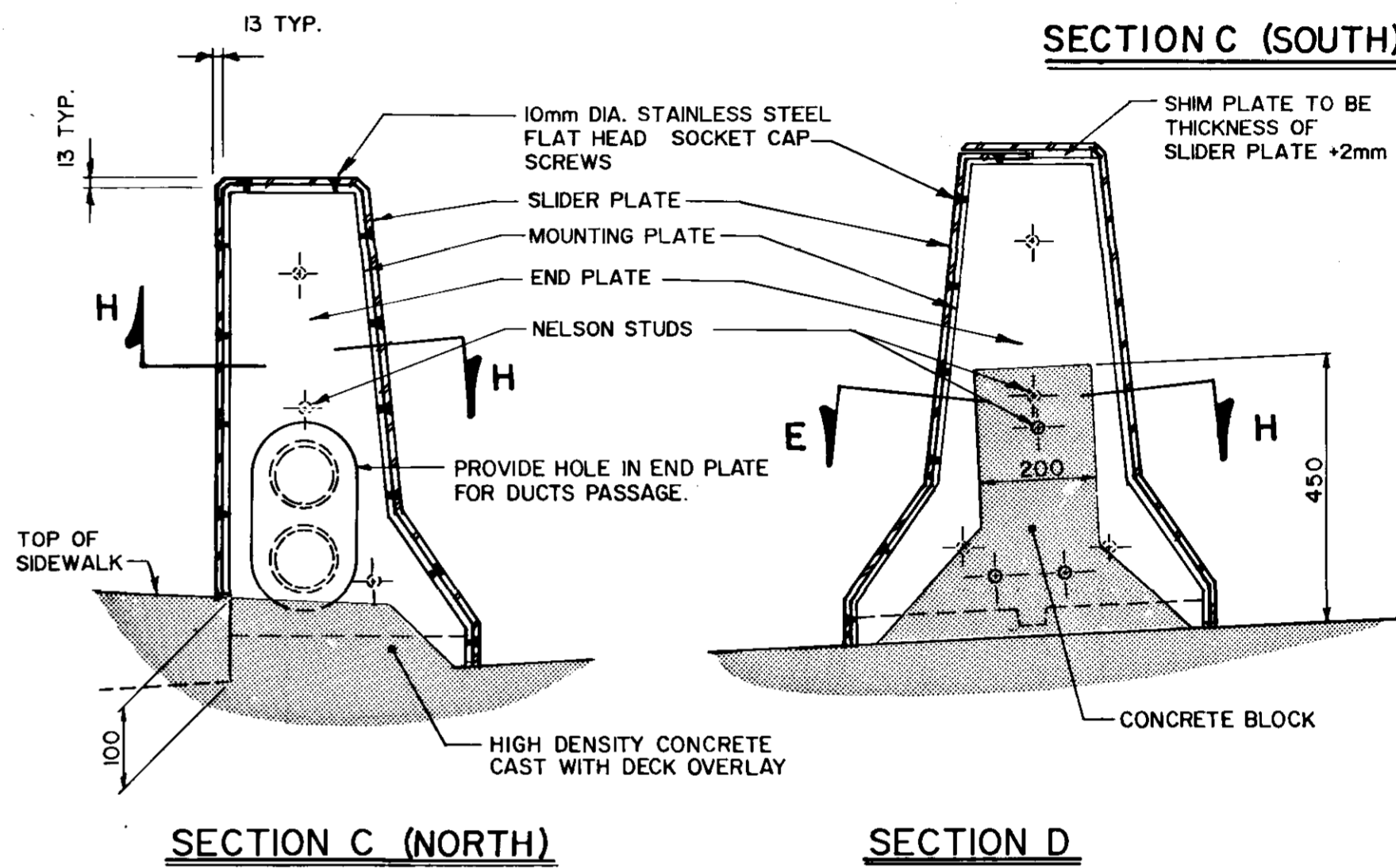


SLIDER PLATE PLANS

N.T.S.

DIM. 'J'	5°	10°	15°	20°	25°	30°	MIN.	MAX.
E & W ABUT'S	40	39	38	37	36	34	12	64
PIERS 3 & 8	58	54	50	46	42	38	25	125

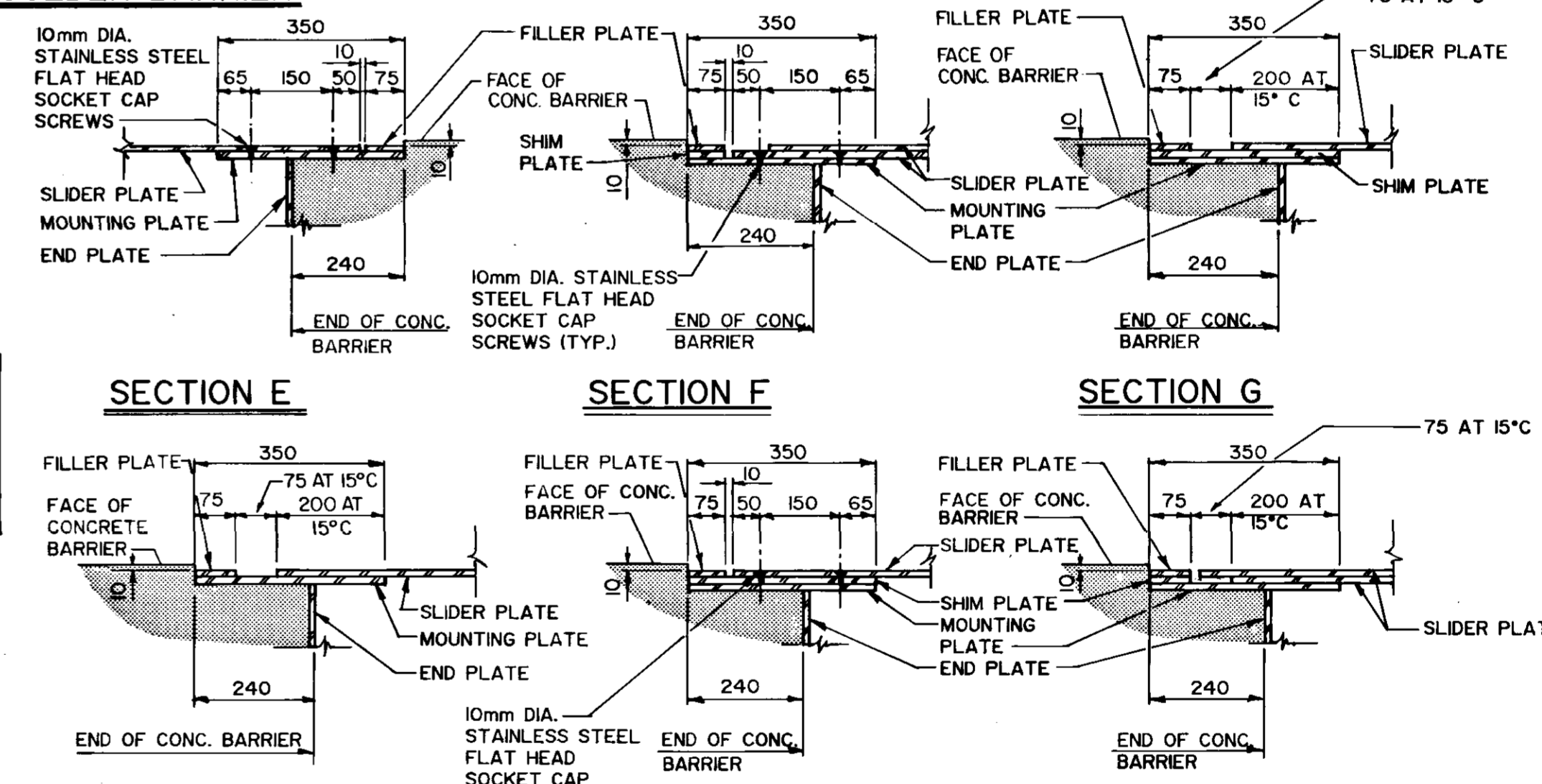
NOTE: 5° DENOTES TEMPERATURE IN CELSIUS



SECTION C (NORTH)

SECTION D

SHOULDER BARRIER



SECTION H

SECTION K

SECTION L

SCALE OF SECTIONS - 1 : 10

RECORD DRAWING

B-5582

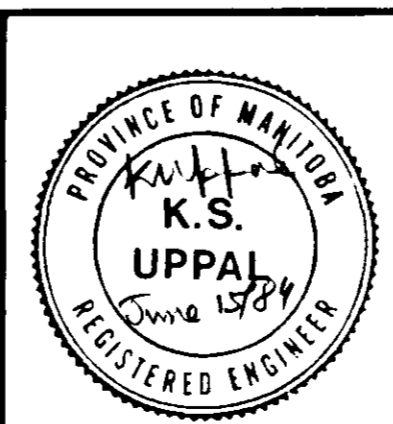
METRIC

WHOLE NUMBERS INDICATE MILLIMETRES
DECIMALIZED NUMBERS INDICATE METRES

NOTES:

- MANUFACTURER'S SHOP DRAWINGS SHALL BE SUBMITTED TO THE ENGINEER FOR APPROVAL AT LEAST FOURTEEN (14) WORKING DAYS PRIOR TO FABRICATION. THE EXPANSION JOINT ASSEMBLIES SHALL BE DESIGNED TO CARRY AASHTO HS30-44 LIVE LOADING.
- STEEL SHALL BE IN ACCORDANCE WITH CSA STANDARD G40.21M GRADE 300 W OR EQUAL.
- STEEL EXTRUSIONS SHALL BE IN ACCORDANCE WITH CSA STANDARD G40.21 M GRADE 230 G MINIMUM.
- ALL STEEL SURFACES SHALL BE HOT DIP GALVANIZED TO A NET RETENSION OF 600 GM/M² IN ACCORDANCE WITH CSA STANDARD G 164 AFTER FABRICATION AND INSTALLED IN ONE CONTINUOUS PIECE.
- JOINT ASSEMBLY SHALL BE FABRICATED AND COMPLETELY SHOP ASSEMBLED AND PRESET TO DIMENSION 'J' FOR 15° C PRIOR TO SHIPMENT.
- WELDING SHALL BE OF LOW HYDROGEN CLASSIFICATION. MANUAL ELECTRODES SHALL BE E7016 OR E7018. ALL WELDING SHALL BE IN ACCORDANCE WITH CSA STANDARD W59.
- SEAL SHALL BE PREFORMED RUBBER SEAL. EACH RUBBER SEAL SHALL BE SUPPLIED AND INSTALLED IN ONE CONTINUOUS PIECE. NO SPLICES IN THE RUBBER SEAL WILL BE PERMITTED.
- JOINT ASSEMBLY SHALL BE INSTALLED 5 MM BELOW ELEVATION AND GRADE OF BRIDGE DECK.
- AFTER REMOVAL OF CLAMPING CHANNELS AND SPACER DAM, BOLT AND BLEEDER HOLES TO BE FILLED WITH AN APPROVED EPOXY GROUT.
- INSTALLATION TEMPERATURE SHALL BE TAKEN AS THE MEAN SHADE AIR TEMPERATURE PRIOR TO JOINT INSTALLATION AT THE STRUCTURE AS FOLLOWS: FOR CONCRETE STRUCTURES-48 HOURS.
- ALL AREAS OF DAMAGED GALVANIZING SHALL BE REPAIRED BY USING THE GALVALOY PROCEDURE AS SPECIFIED.

NO	REVISIONS	DATE	APP
1	RECORD DRAWING	NOV.86	AP



the **uma** group
Underwood McLellan Ltd.
 Consulting Engineers and Planners

DESIGNED BY: K.U. DRAWN BY: J.R.C.
 CHECKED BY: J.T. DATE: APRIL 1985
 JOB No. 0265-216-01

APPROVED BY: [Signature] DATE: June 15/84

THE CITY OF WINNIPEG
 WORKS & OPERATIONS DIVISION
 STREETS & TRANSPORTATION DEPARTMENT

NAIRN AVENUE OVERPASS
 DECK REHABILITATION, STRUCTURAL STRENGTHENING AND RELATED WORKS

EXPANSION JOINT DETAILS

AUTHORIZED BY: [Signature] DATE: 1985-04-16
 ACCEPTED BY: [Signature] DATE: 1985-04-16

SCALE: AS NOTED DRAWING NO. B121-85-16