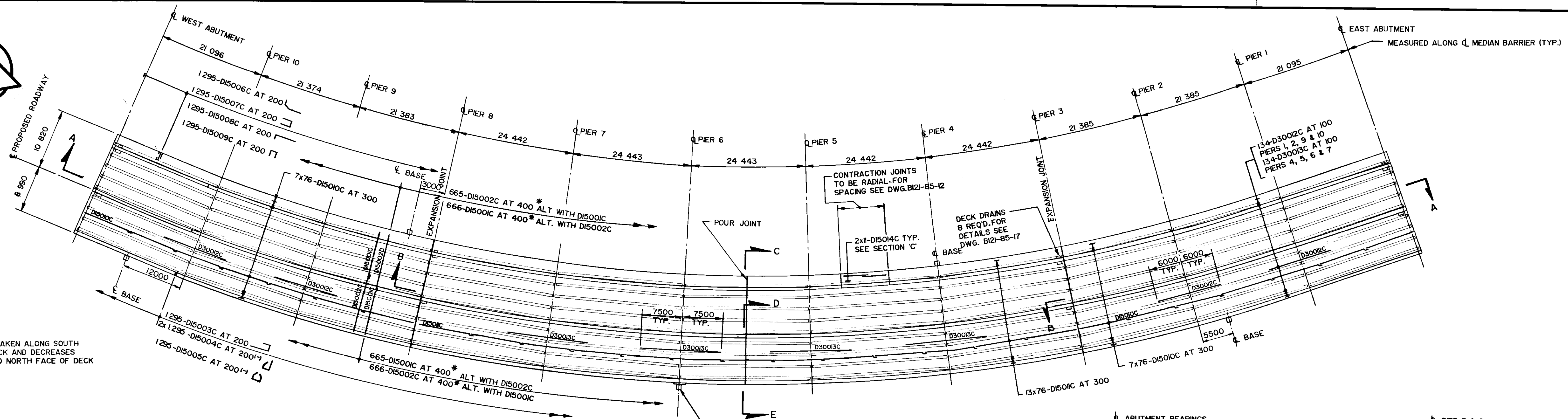
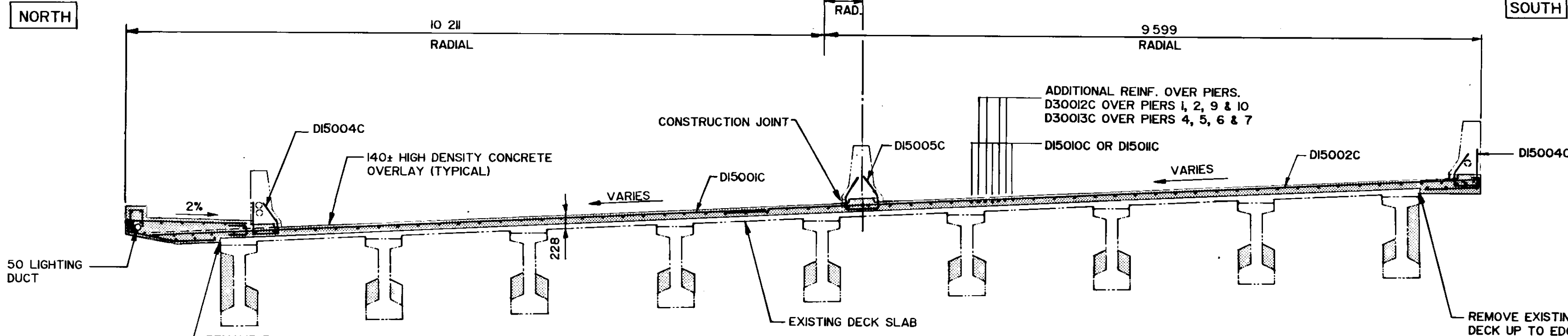


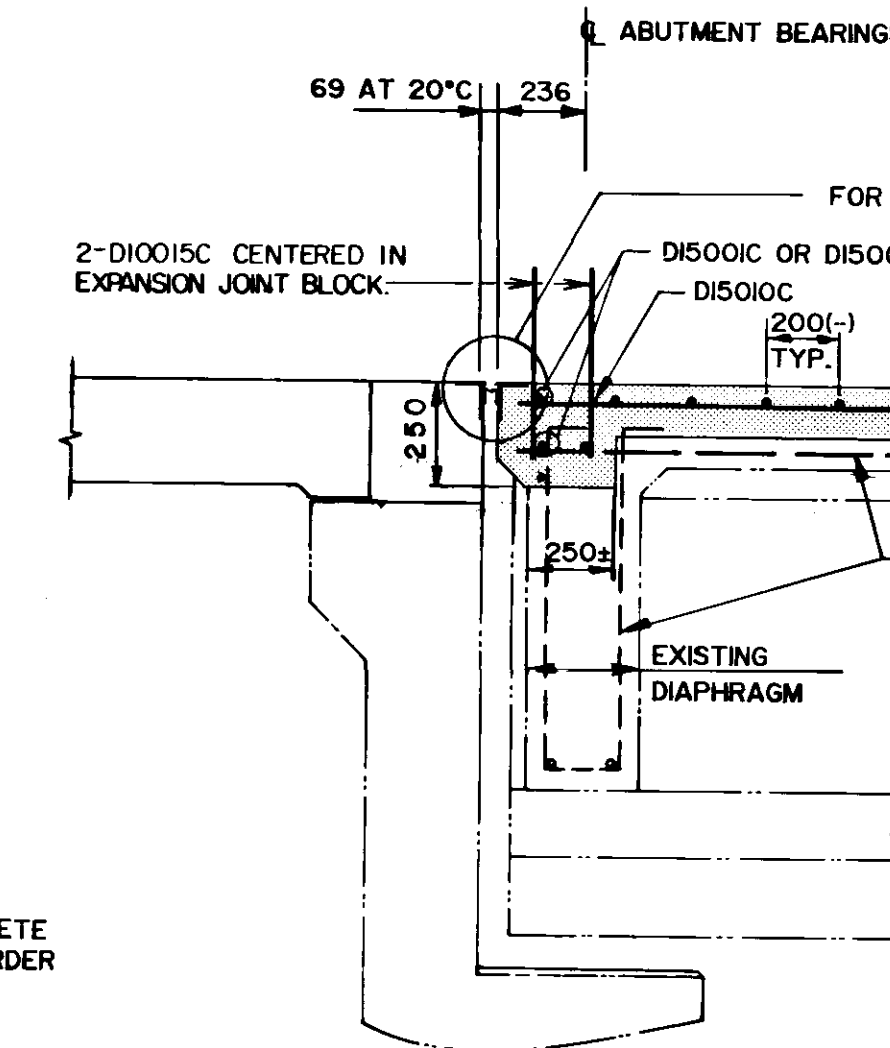
* SPACING TAKEN ALONG SOUTH FACE OF DECK AND DECREASES RADIALLY TO NORTH FACE OF DECK



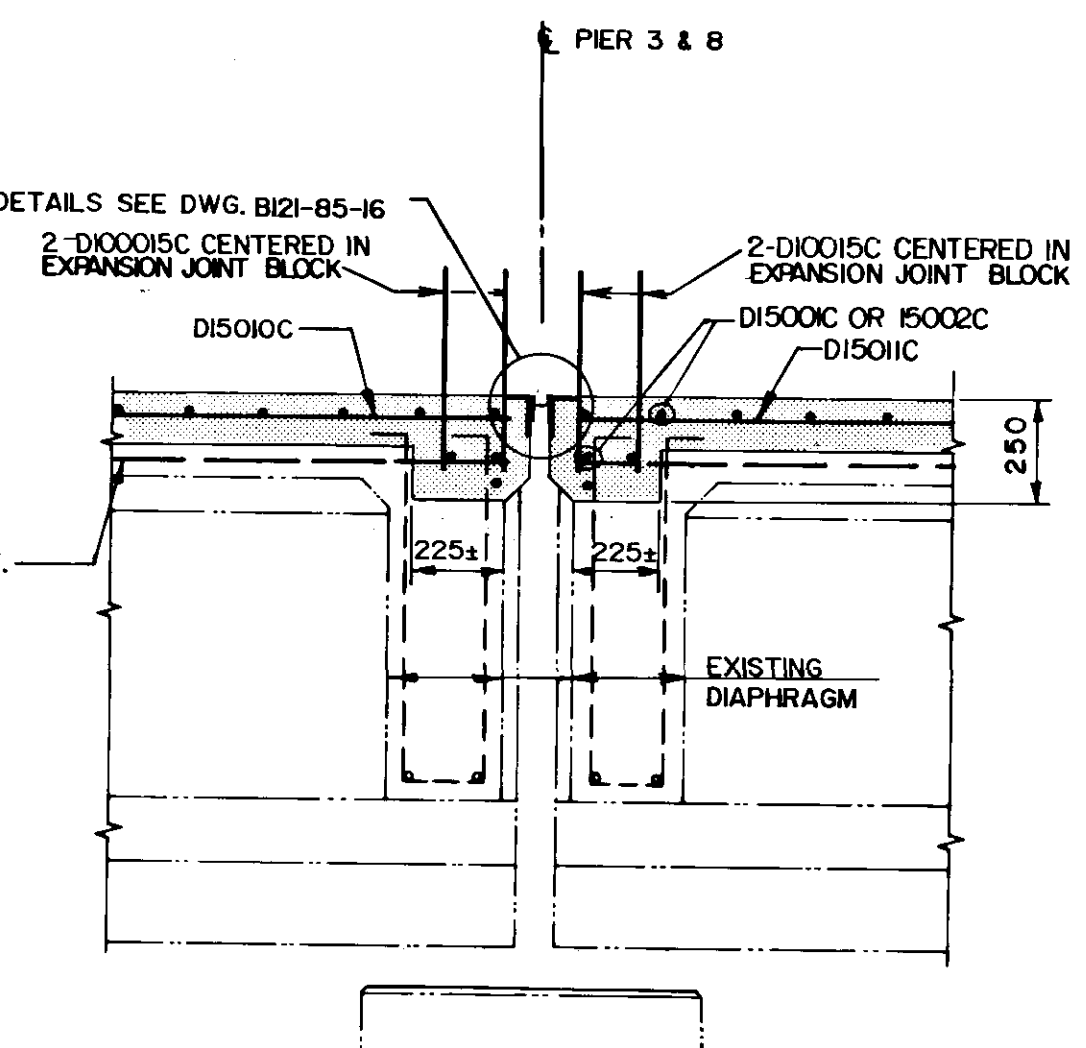
PLAN
SCALE - 1 : 400



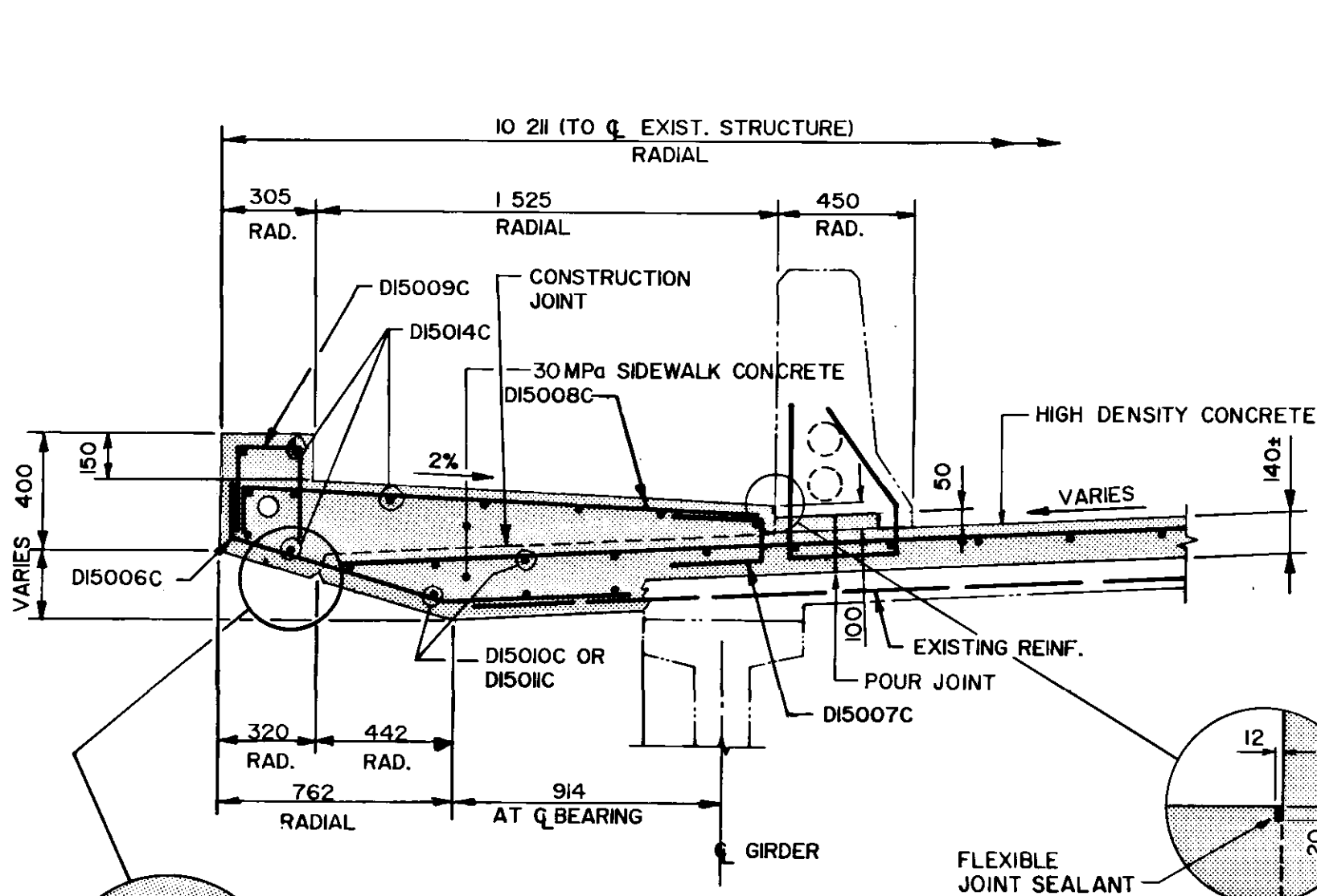
TYPICAL CROSS SECTION
SCALE - 1 : 50



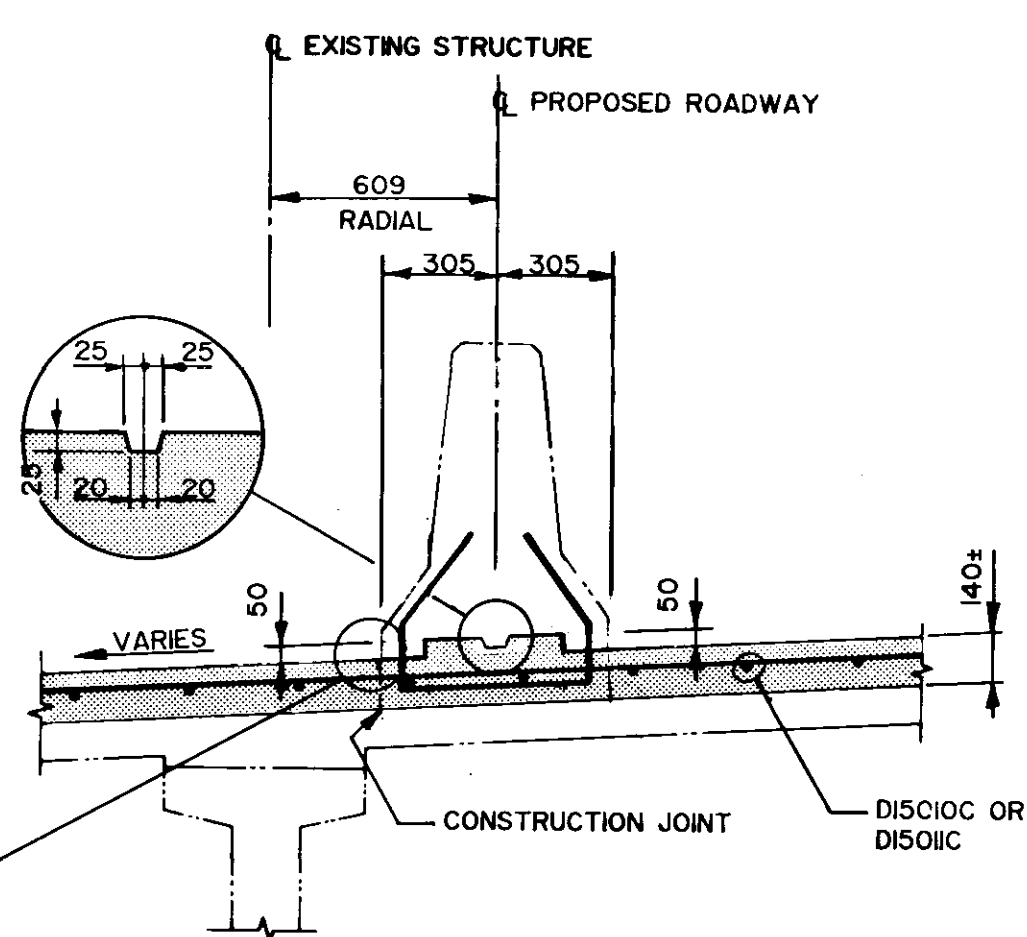
SECTION A
SCALE - 1 : 20



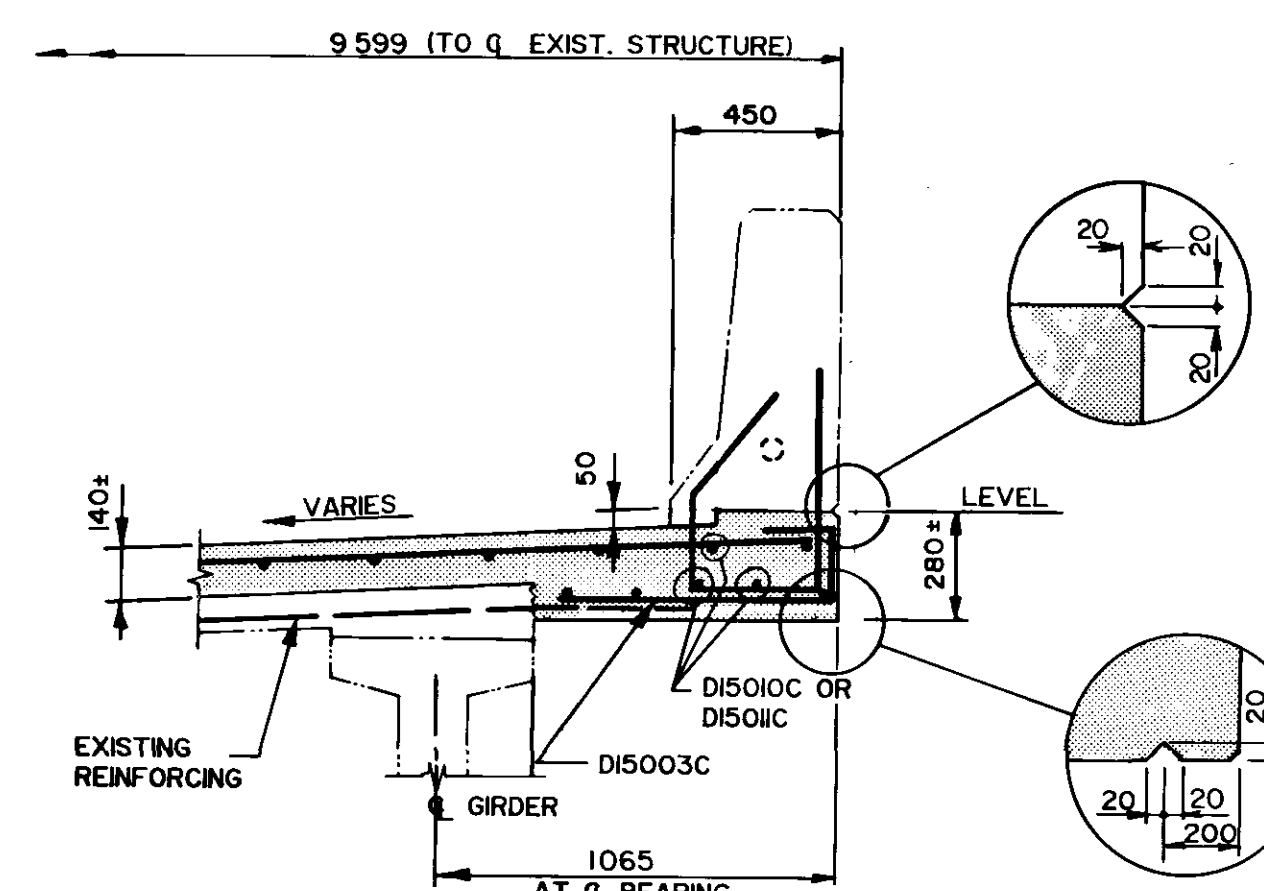
SECTION B
SCALE - 1 : 20



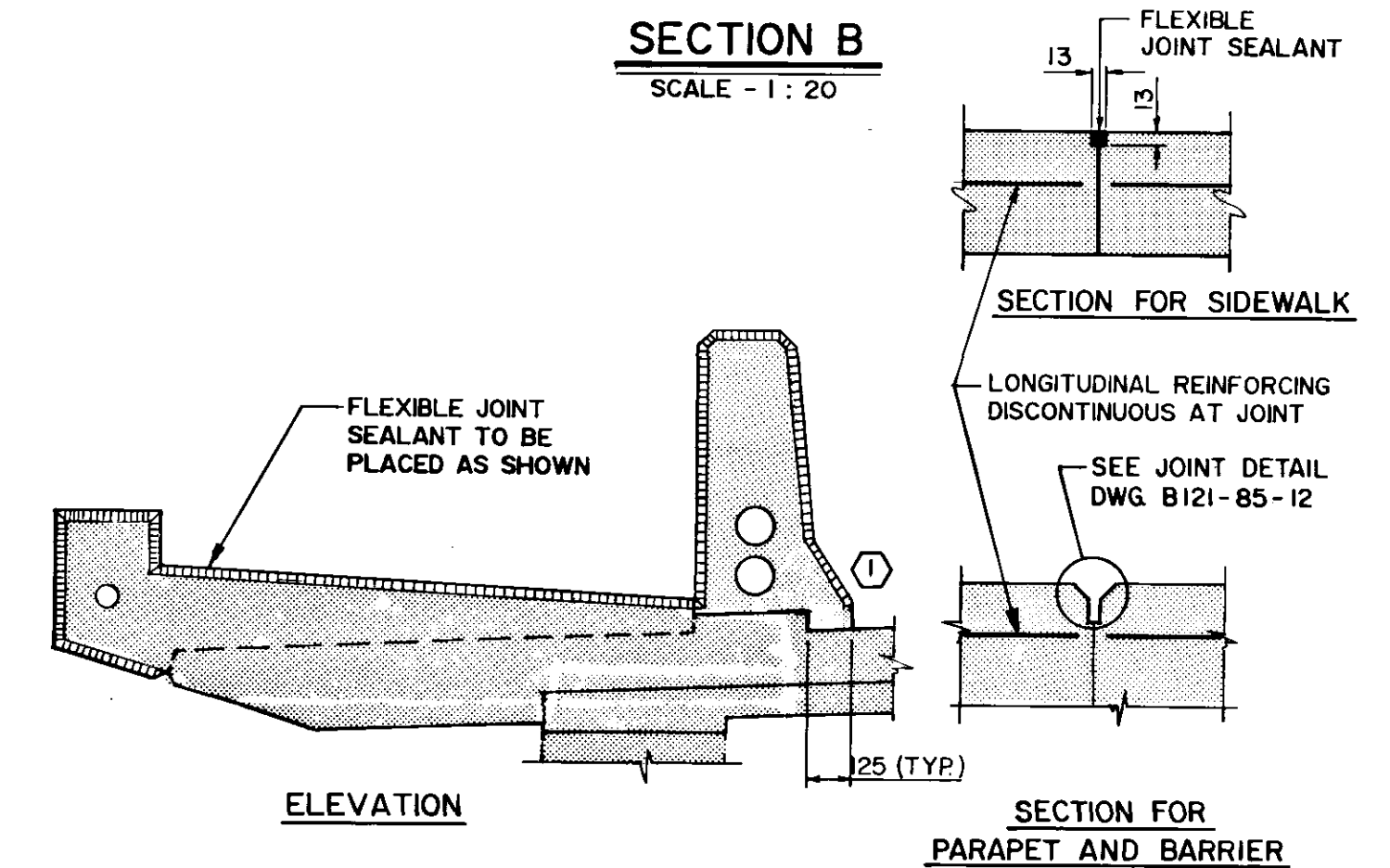
SECTION C
SCALE - 1 : 20



SECTION D
SCALE - 1 : 20



SECTION E
SCALE - 1 : 20

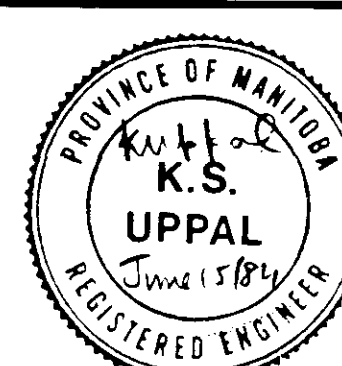


CONTRACTION JOINT DETAIL B-5576 METRIC
N.T.S.

RECORD DRAWING

WHOLE NUMBERS INDICATE MILLIMETRES
DECIMALIZED NUMBERS INDICATE METRES

NO	REVISIONS	DATE	APP
2	RECORD DRAWING	NOV-86	
1	ADDENDUM NO. 1	MAY-85	



the UMA group
Underwood McLellan Ltd.
Consulting Engineers and Planners

DESIGNED BY: K.U. DRAWN BY: EJB
CHECKED BY: J.T. DATE: APRIL 1985
JOB No. 0265-216-01
APPROVED BY: [Signature] DATE: June 10 1984

THE CITY OF WINNIPEG
WORKS & OPERATIONS
DIVISION
STREETS & TRANSPORTATION
DEPARTMENT

NAIRN AVENUE OVERPASS
DECK REHABILITATION, STRUCTURAL STRENGTHENING
AND RELATED WORKS

DECK DIMENSIONS AND REINFORCING

AUTHORIZED BY: [Signature] P.E. 1985-04-16
ACCEPTED BY: [Signature] P. Eng 1985-04-16
SCALE: AS SHOWN DRAWING NO: B121-85-10