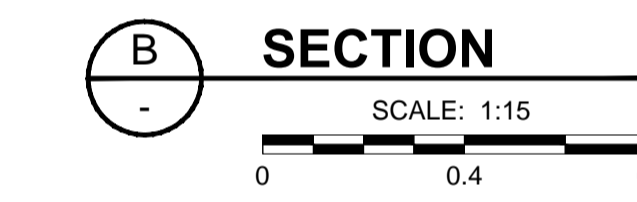
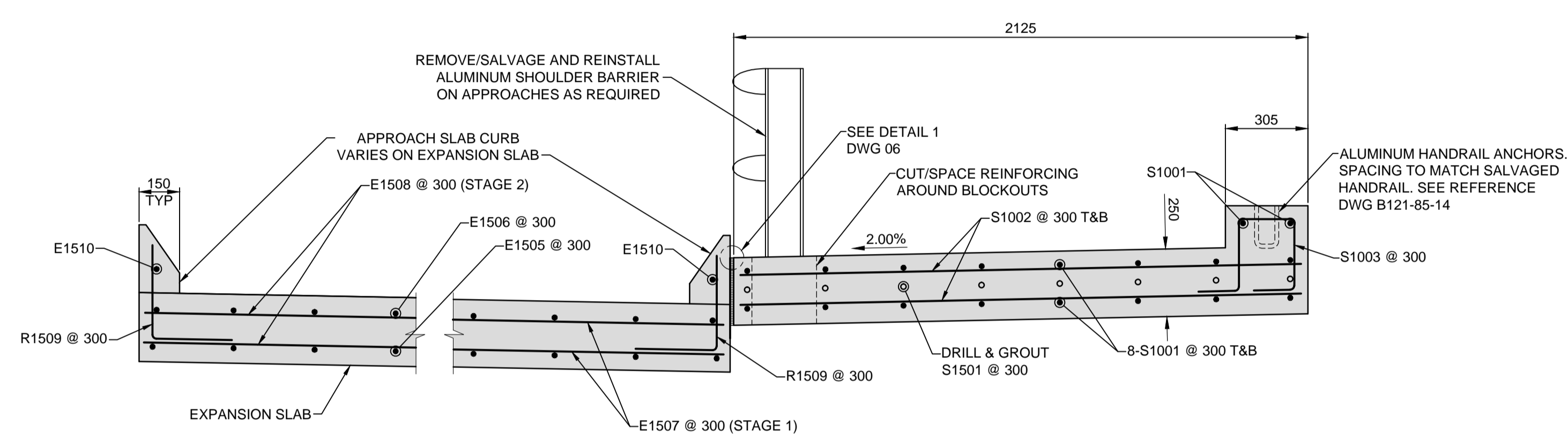
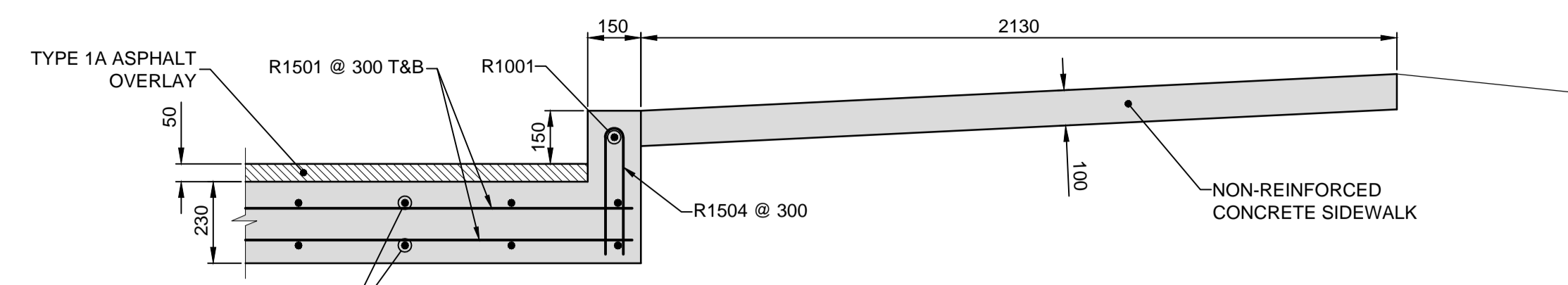
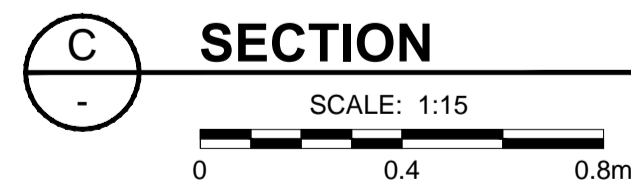
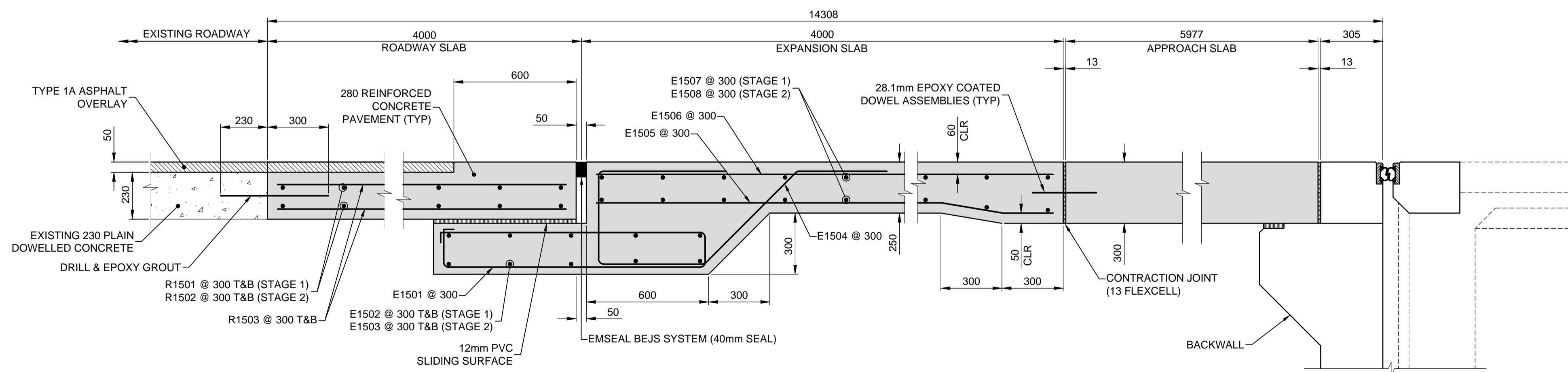
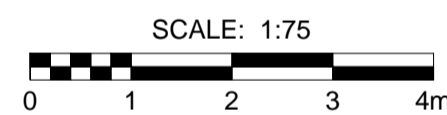


- EAST ABUTMENT SHOWN
- WEST ABUTMENT IS OPP HAND

**PLAN OF ROADWAY EXPANSION JOINT**



**NOTE:**  
 • CONTRACTOR TO REFER TO REFERENCE DRAWINGS FOR DETAILS OF EXISTING CONSTRUCTION.



**METRIC**  
 WHOLE NUMBERS INDICATE MILLIMETRES  
 DECIMALIZED NUMBERS INDICATE METRES

**LOCATION APPROVED**  
 UNDERGROUND STRUCTURES

SUPR. U/G STRUCTURES COMMITTEE DATE

**NOTE:**  
 LOCATION OF UNDERGROUND STRUCTURES AS SHOWN ARE BASED ON THE BEST INFORMATION AVAILABLE BUT NO GUARANTEE IS GIVEN THAT ALL EXISTING UTILITIES ARE SHOWN OR THAT THE GIVEN LOCATIONS ARE EXACT. CONFIRMATION OF EXISTENCE AND EXACT LOCATION OF ALL SERVICES MUST BE OBTAINED FROM THE INDIVIDUAL UTILITIES BEFORE PROCEEDING WITH CONSTRUCTION.

| No. | ISSUED FOR TENDER | 14/03/07 | BE |
|-----|-------------------|----------|----|
| 0   | ISSUED FOR TENDER | 14/03/07 | BE |
|     | REVISIONS         | YYMMDD   | BY |

|                            |                           |
|----------------------------|---------------------------|
| <b>MORRISON HERSHFIELD</b> |                           |
| DESIGNED BY: BE            | CHECKED BY: BE, KEL       |
| DRAWN BY: DML              | APPROVED BY: BWB          |
| HOR. SCALE: AS SHOWN       | RELEASED FOR CONSTRUCTION |
| VERT. SCALE: AS SHOWN      |                           |
| DATE: 14/02/28             | DATE:                     |

PROFESSIONAL'S SEAL

ORIGINAL DRAWING REV No. 0

SEALED BY:  
 B. EBENSPPANGER  
 MAR 7, 2014

CONSULTANT DRAWING No.  
 W130027-DET-05.dwg

**THE CITY OF WINNIPEG**  
 PUBLIC WORKS DEPARTMENT  
 ENGINEERING DIVISION

**Winnipeg**

**NAIRN AVENUE OVERPASS MAINTENANCE WORKS**

REINFORCED CONCRETE PAVEMENT

CITY DRAWING NUMBER: B121-14-09  
 SHEET 9 OF 11  
 DRAWING No. REV: 09 0

BID OPPORTUNITY No. 1051-2013