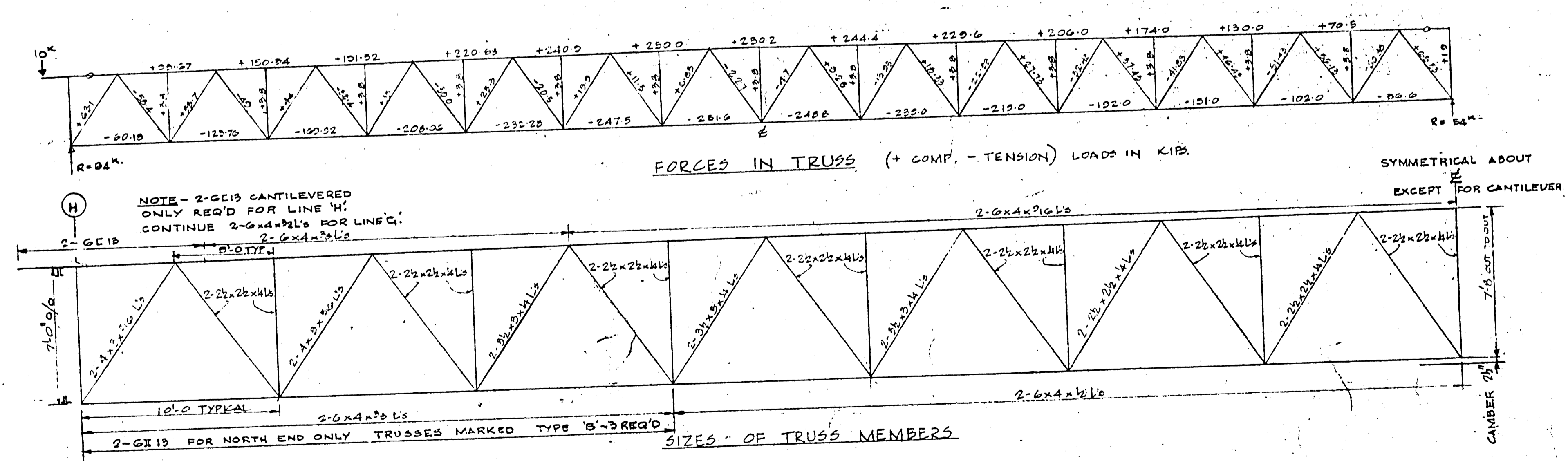
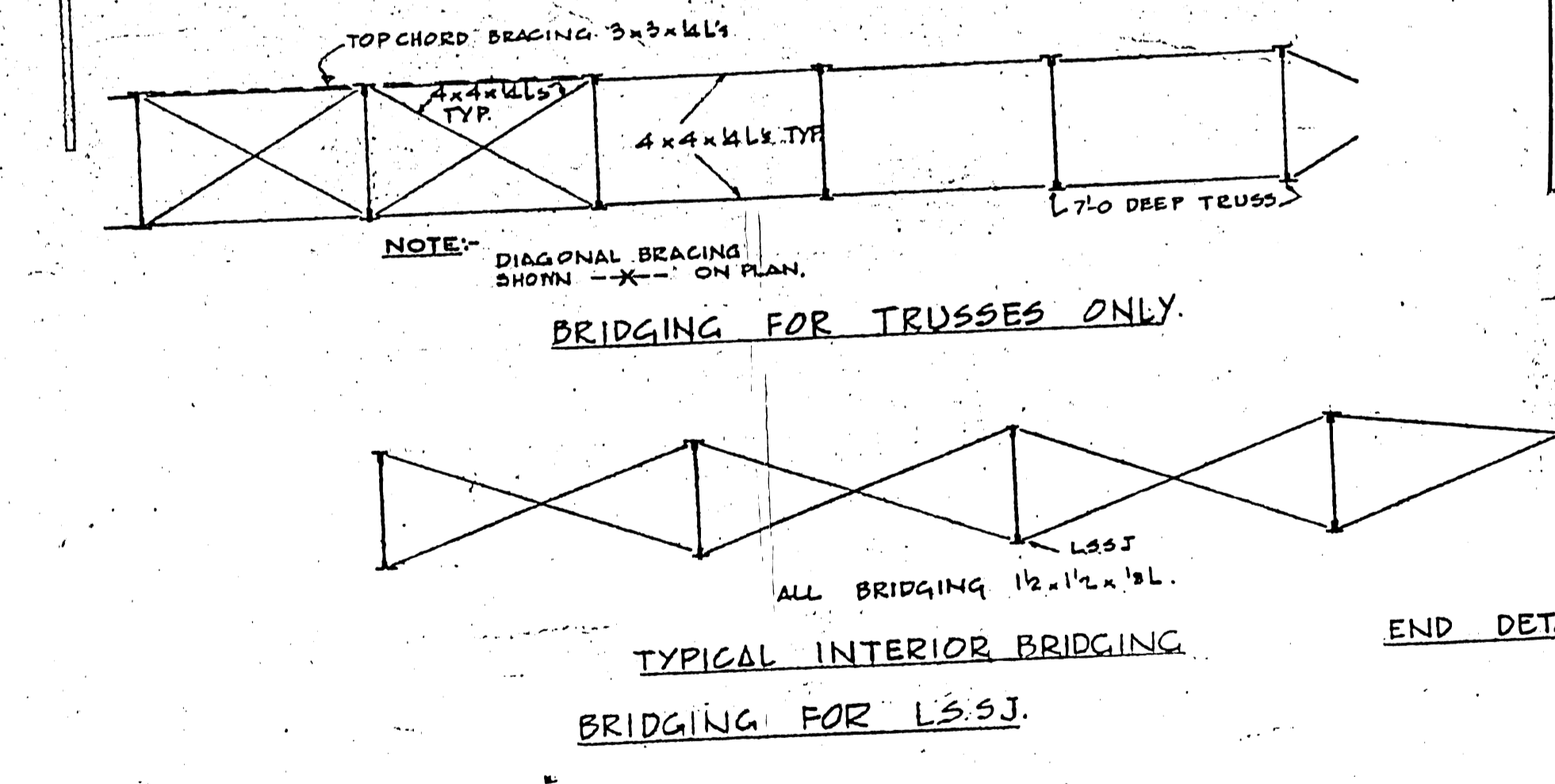
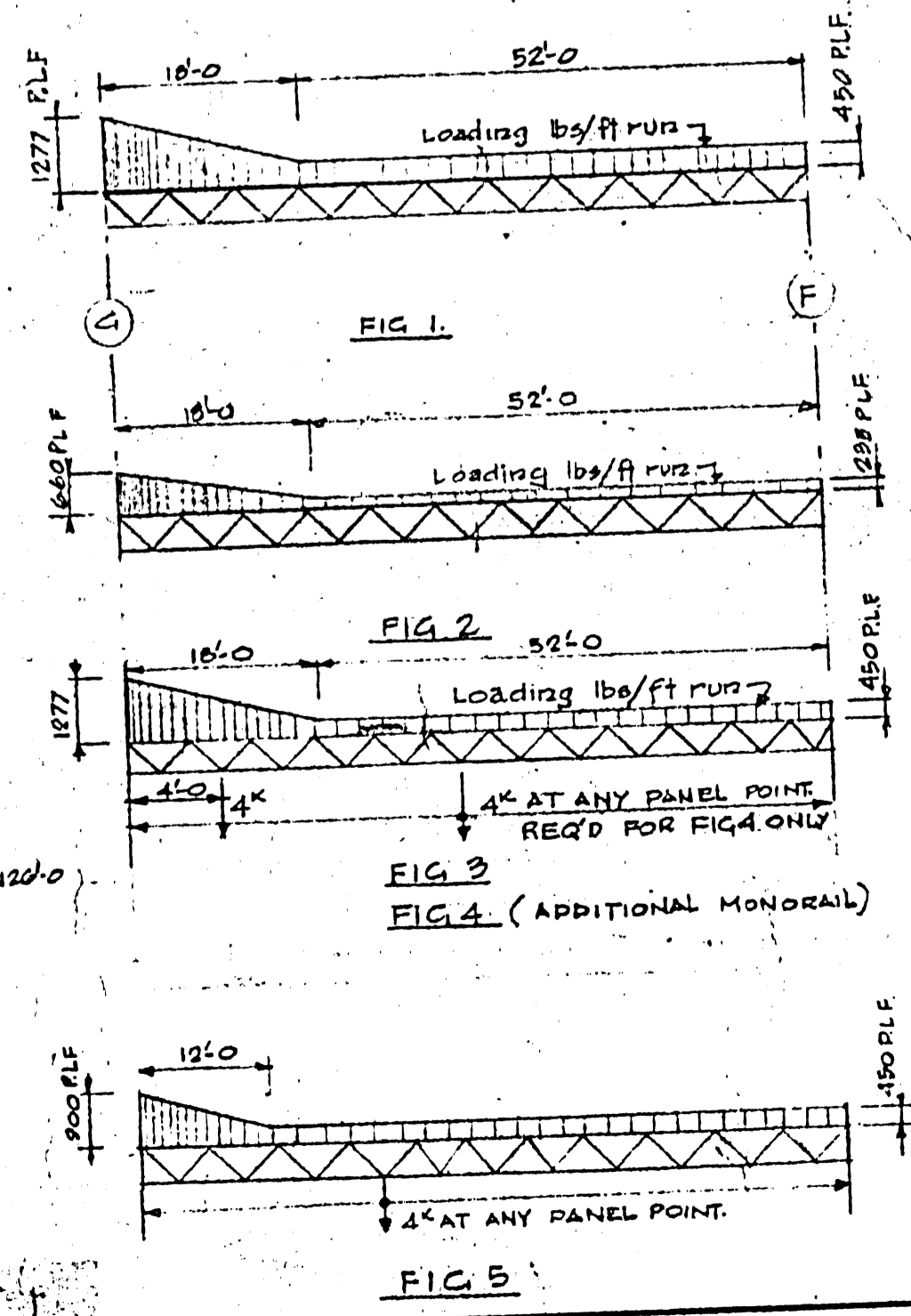
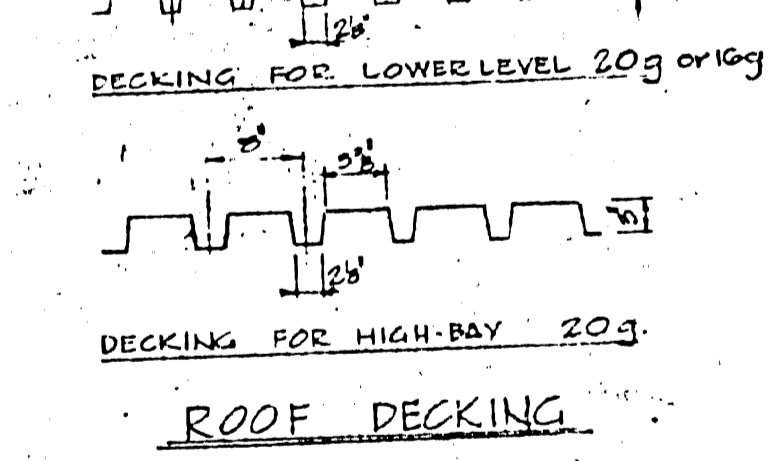
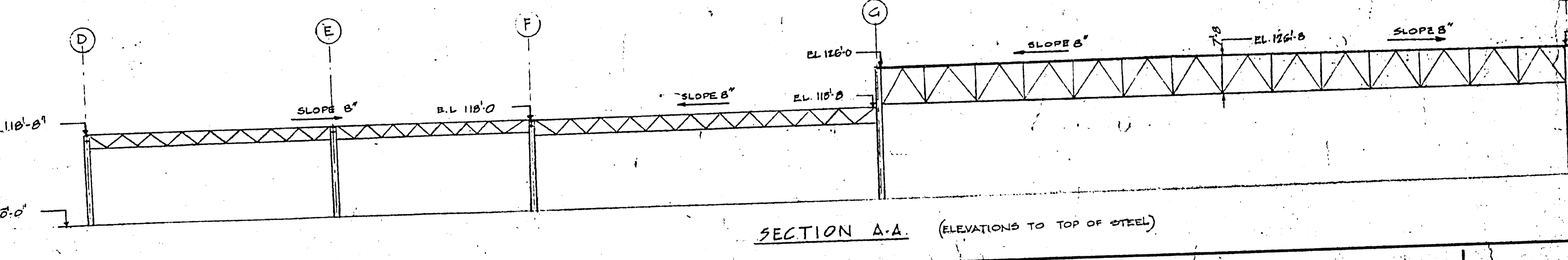


ROOF FRAMING PLAN
1/8" TO 1" = 0"



DETAIL OF TRUSS - SHOWING SIZES & FORCES
NOTE: ALL TRUSS STEEL TO BE A401-12



B-14 FILE
RETURN TO OFFICE
2911

LICENSED TO PRACTICE IN THE PROVINCE OF MANITOBA
My License Exp. on 30 Jun. 1958
2185-318



ISSUE OR REVISION		DESCRIPTION	DRAWN BY
1	AS BUILT		R.H.T.
2	REVISED PER ADDENDUM 1-6 - FOR CONSTRUCTION		R.H.T.
3	FOR TENDERS		
4	FOR APPROVAL		

METROPOLITAN CORPORATION OF GREATER WINNIPEG STREETS AND TRANSIT DIVISION		ARCHITECTS Walsman Ross + Blankstein Coop Gillmer Harris 105 DONALD STREET, WINNIPEG, MANITOBA	
TRANSIT STORAGE AND SHOP FACILITIES		OVERHAUL & REPAIR SHOP	
ROOF FRAMING PLAN		DATE: SEPT 67	
CONSULTING PROFESSIONAL ENGINEERS A. D. MARGISON AND ASSOCIATES LIMITED 105 LESLIE STREET, 2ND FLOOR, WINNIPEG, MANITOBA		DRAWING NO. 2185-318	
APPROVED	BY: <i>[Signature]</i>	CHECKED	BY: <i>[Signature]</i>
DATE	NOV 1967	FILE NO.	
PROJECT DIRECTOR OF GREATER WINNIPEG		STRUCTURAL	