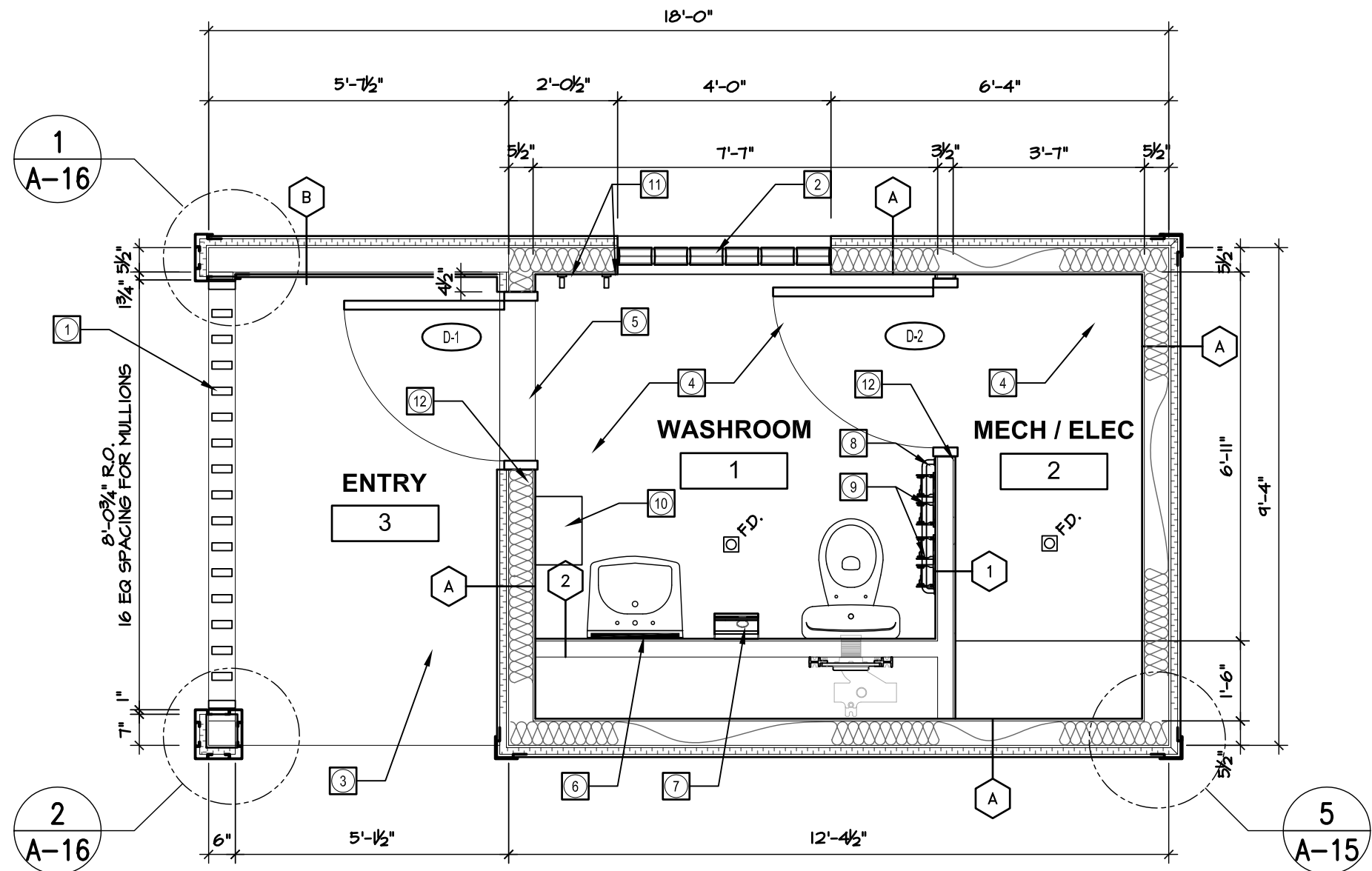




A-2
Rev. 0



CONSTRUCTION NOTES:

- ① CLEAR ANOD. ALUM PRIVACY SCREEN IN CLEAR ANOD ALUM FRAME
- ② LOW "E" GLASS BLOCK WINDOW - PITTSBURGH CORNING ENERGY EFFICIENT GLASS BLOCK PANEL IN ALUM FRAME & "PROVANTAGE SYSTEM"
- ③ LIGHT BROOM FINISHED CONC SLAB WITH SEALER HARDENER, SLOPE TO DRAIN.
- ④ SEAMLESS SHEET VINYL FLOORING W/ 6" FLASHCOVING.
- ⑤ ALUM THRESHOLD
- ⑥ 18" X 30" S/S MIRROR W/ SHELVE
- ⑦ HIGH SPEED HAND DRYER
- ⑧ 30" GRAB BAR
- ⑨ DOUBLE ROLLS TOILET PAPER DISPENSER
- ⑩ LINEN HAND TOWEL ROLL DISPENSER
- ⑪ HAT & COAT HOOK
- ⑫ PROVIDE ROUGH IN FOR CARD READER - SEE ELEC. (CARD READER SUPPLY & INSTALL BY OWNER)

1
A-2
GROUND FLOOR PLAN
SCALE 3/8" = 1'-0"

COMFORT STATION FOR WINNIPEG TRANSIT

GROUND FLOOR PLAN

REV. 0 13/11/29 ISSUED FOR TENDER & CONSTRUCTION

SCALE: 3/8" = 1'-0"
DATE: 2013/06/20

Victor Suen Architect

23 Stormont Drive, Winnipeg, MB R3V 1L9
email: victorsuenarchitect@mts.net
Ph (204) 228-0230 Fax (204) 261-6341