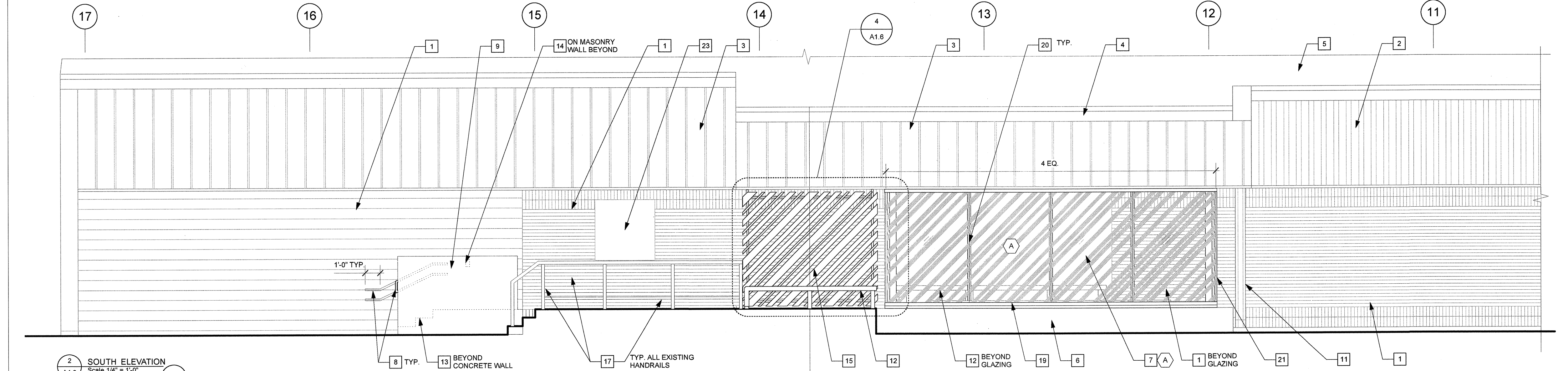


1 REFLECTED CEILING PLAN  
Scale 1/4" = 1'-0"

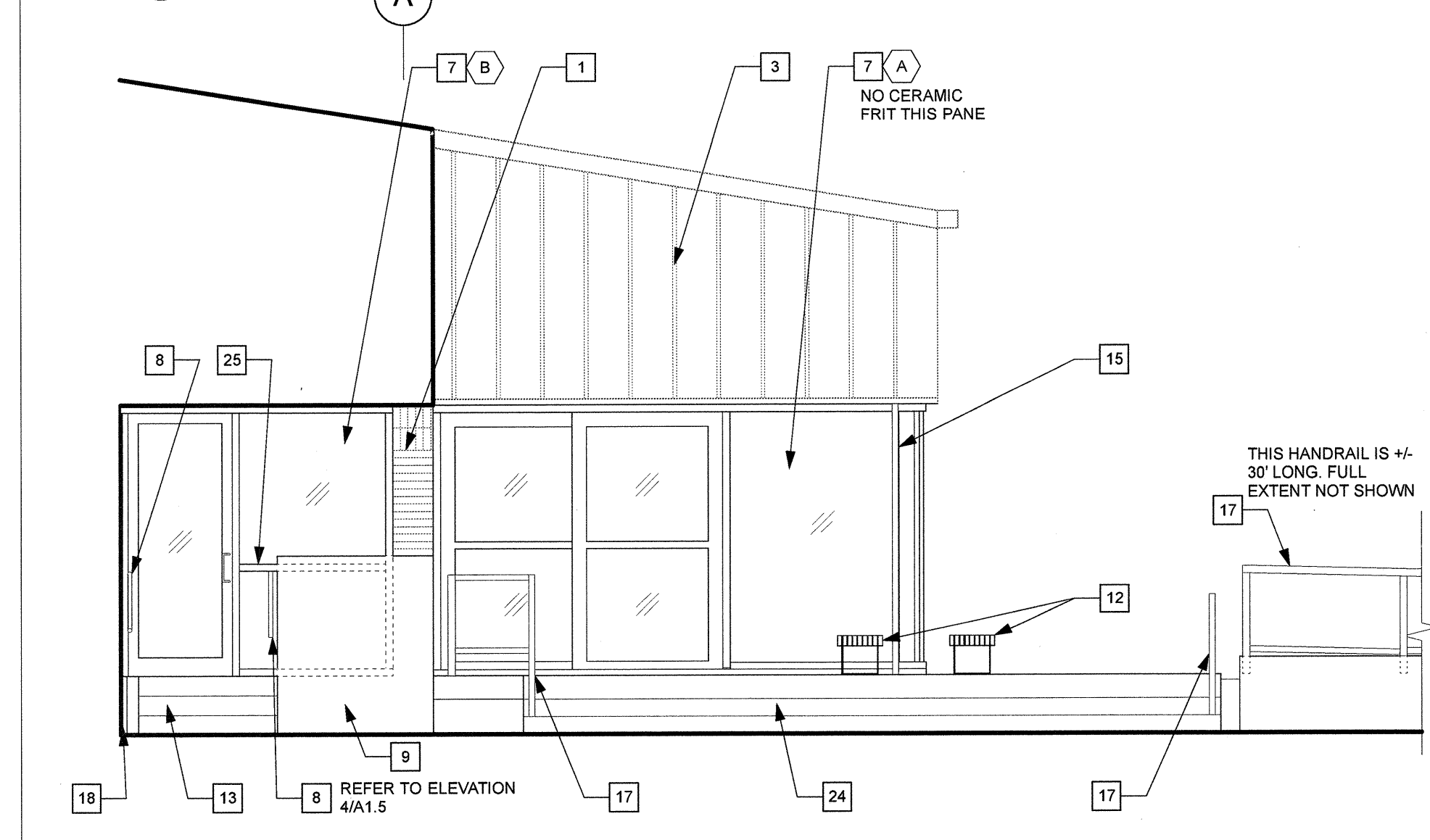
NOTE: CONTRACTOR TO RETAIN ANY REMOVED TRIMWORK, FRAMING ETC TO BE UTILISED IN RENOVATION. IF DEMOLISHED DURING REMOVAL, CONTRACTOR TO REPLACE IN KIND.

- KEYNOTES-REFLECTED CEILING PLAN**
- EXISTING WOOD CEILING TO REMAIN
  - EXISTING METAL SOFFIT TO REMAIN
  - NEW PREFINISHED METAL SOFFIT - REFER TO SPEC.
  - EXISTING LINE OF INSULATED WALL ABOVE SOFFIT. RELOCATE AS PER WALL SECTIONS
  - EXISTING METAL FLASHING TO REMAIN
  - NEW ALUMINUM FRAME WALL. ALIGN TOP W/ TOP OF D003
  - EXISTING STRUCTURE
  - PERFORATED PRE-FIN METAL SOFFIT SHOWN IN GREY. REFER TO SPEC.
  - OPENING IN PRE-FIN. METAL SOFFIT FOR METAL SCREEN STRUCTURE. REFER TO STRUCT. FOR REQ'D OPENING SIZE. PROVIDE CLOSURE ANGLES TO MATCH SOFFIT PANEL.
  - NEW RECESSED LIGHT FIXTURE - REFER TO ELECT. CENTRE ON CEILING PANELS. INTERIOR AND EXTERIOR FIXTURES TO ALIGN
  - NEW HORIZONTAL ALUMINUM SUPPORT TO BE SAME CURTAINWALL SYSTEM AS ALUMINUM FRAME WALL. SUPPORT FROM EXISTING MASONRY WALL
  - CONDUIT FOR MOTION DETECTOR. MOTION DETECTOR BY CITY OF WINNIPEG. REFER TO ELECT.

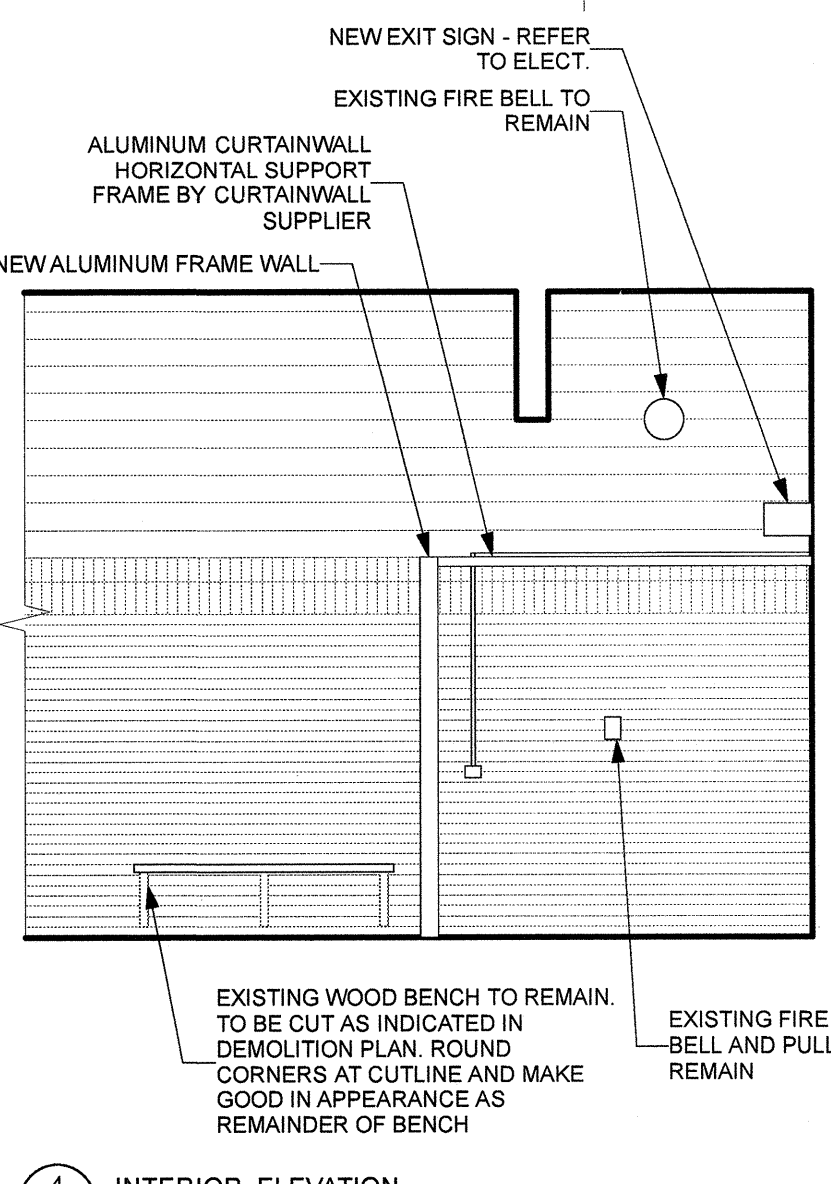


2 SOUTH ELEVATION  
Scale 1/4" = 1'-0"

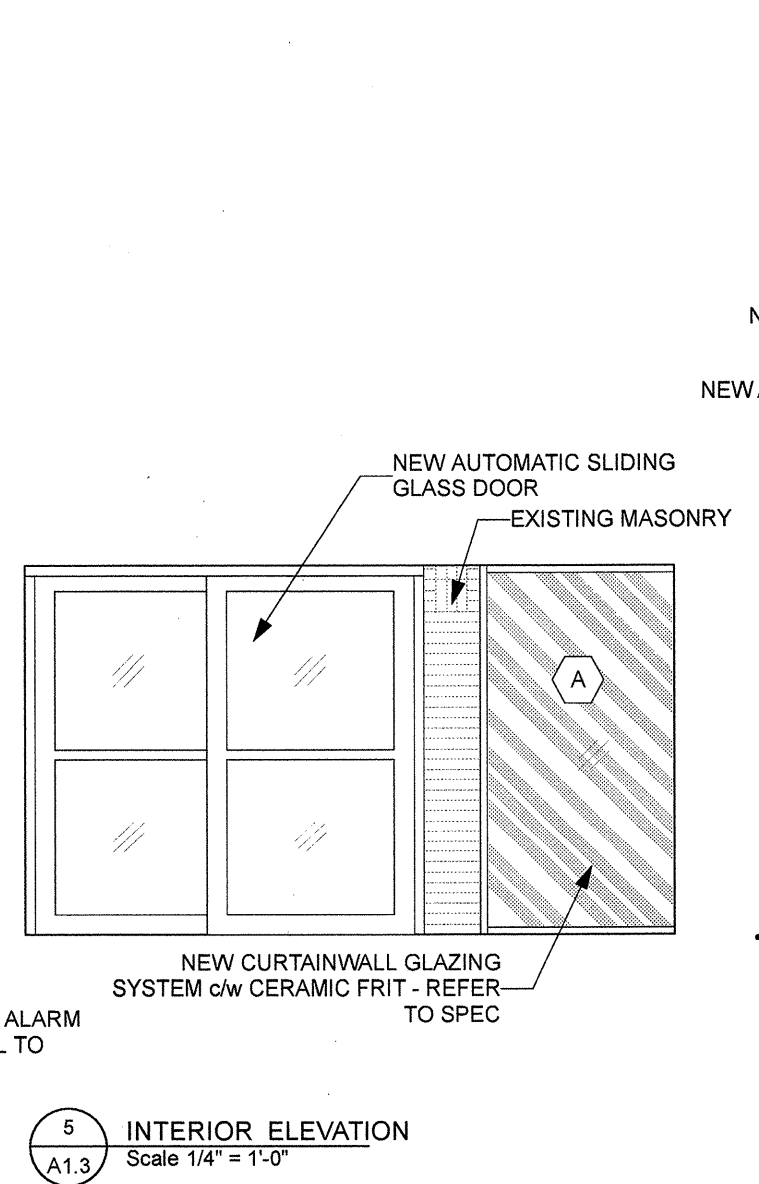
- KEYNOTES: BUILDING ELEVATIONS**
- EXISTING MASONRY
  - EXISTING METAL CLADDING TYPE 1
  - EXISTING METAL CLADDING TYPE 2
  - EXISTING EAVESTROUGH TO REMAIN
  - EXISTING ROOFING MATERIAL
  - EXISTING CONCRETE FOUNDATION
  - NEW CURTAINWALL GLAZING SYSTEM - REFER TO SPEC. AND DETAILS
  - NEW STAINLESS STEEL HANDRAIL - REFER TO DETAILS ON A1.5 AND SPEC.
  - NEW CONCRETE WALL GUARDRAIL - REFER TO STRUCT. AND DETAILS
  - NOT USED
  - EXISTING RAIN WATER LEADER TO REMAIN
  - WOOD BENCH ON PAINTED GALV. STEEL FRAME. REFER TO DETAIL ON A1.6
  - NEW CONCRETE C.I.P. STAIRS - REFER TO STRUCT.
  - NEW CARDAC. REFER TO ELECT.
  - NEW PAINTED GALV. METAL SCREEN. REFER TO DETAIL 4/A1.6 AND STRUCT.
  - NOT USED
  - EXISTING STEEL HANDRAIL TO REMAIN. SANDBLAST, PRIME AND PAINT - TYP.
  - STAINLESS STEEL STRIP - REFER TO DETAILS ON A1.5
  - ELECTRIC BASEBOARD HEATER BEYOND - REFER TO ELECT.
  - FRIT PATTERN TO ALIGN FROM GLAZED UNIT TO GLAZED UNIT
  - FRIT PATTERN TO ALIGN FROM GLAZED UNIT TO GLAZED UNIT SHOWN ON 5/A1.3
  - NOT USED
  - EXISTING CITY OF WINNIPEG SIGNAGE TO REMAIN
  - EXISTING CONCRETE STAIRS TO REMAIN
  - HORIZONTAL CURTAINWALL MULLION TO ALIGN WITH CENTRELINE OF DOOR HANDLE



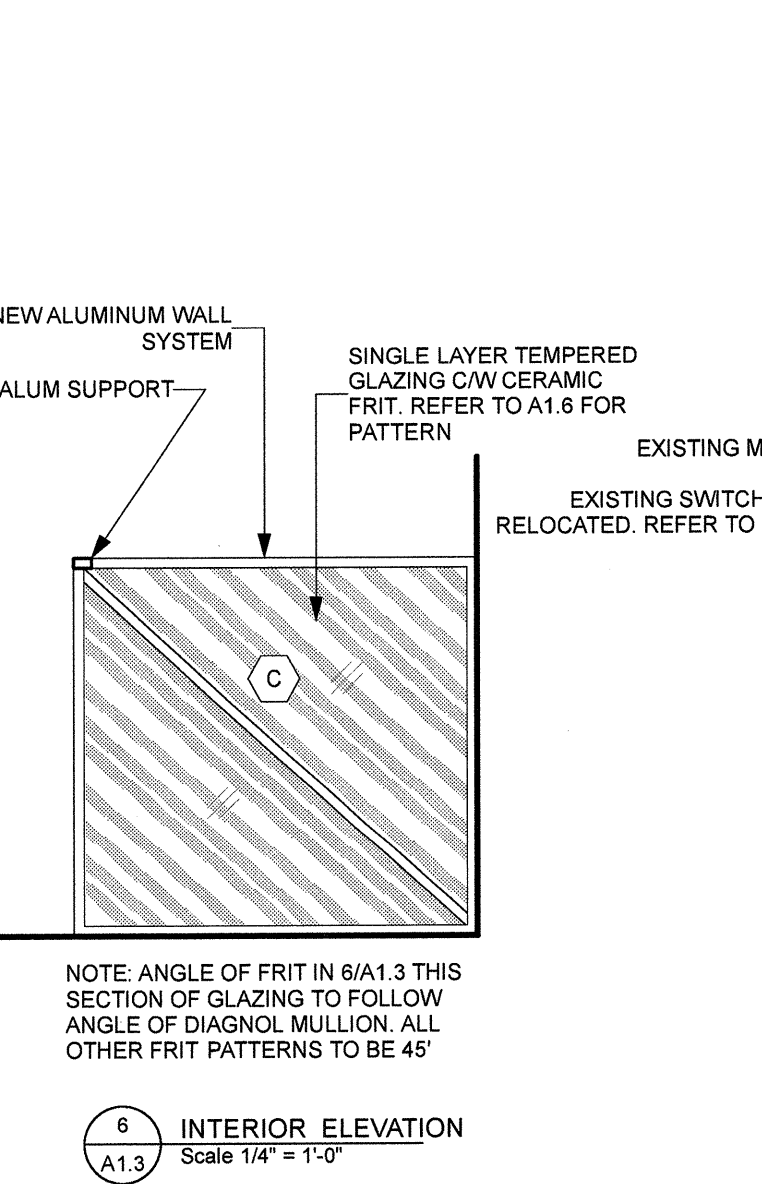
3 WEST ELEVATION  
Scale 1/4" = 1'-0"



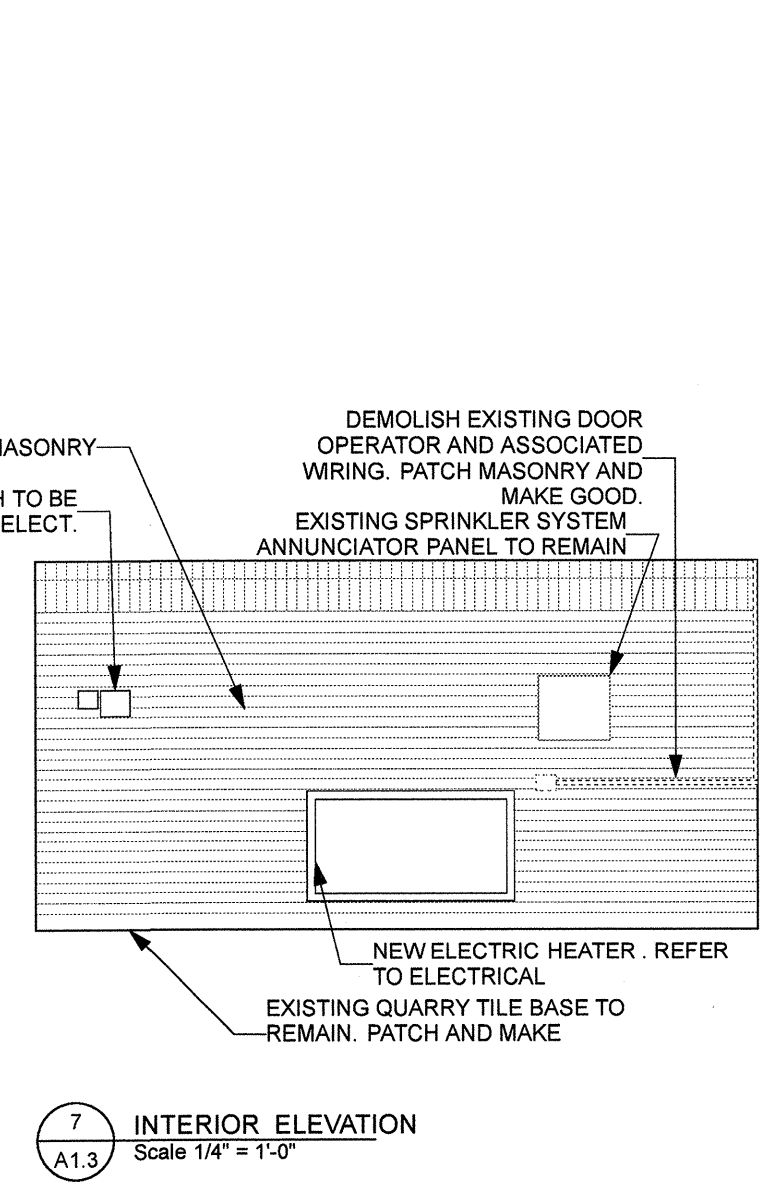
4 INTERIOR ELEVATION  
Scale 1/4" = 1'-0"



5 INTERIOR ELEVATION  
Scale 1/4" = 1'-0"



6 INTERIOR ELEVATION  
Scale 1/4" = 1'-0"



7 INTERIOR ELEVATION  
Scale 1/4" = 1'-0"

**CURTAINWALL GLAZING TYPES**  
REFER TO SECTION 00 88 00

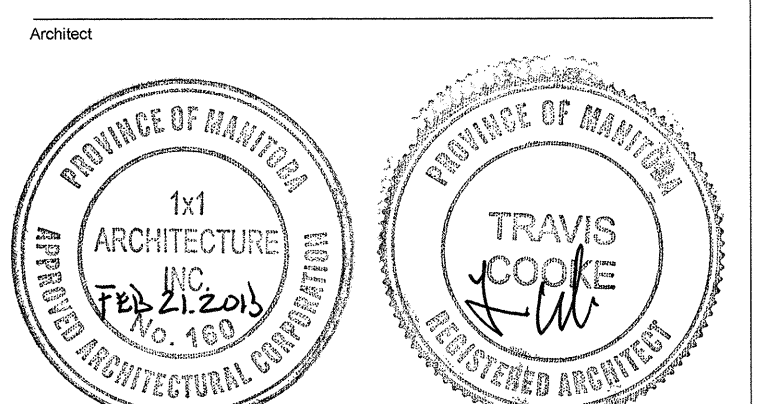
A DUAL GLAZED INSULATING UNIT, TRANSPARENT C/W CERAMIC FRIT, TEMPERED

B DUAL GLAZED INSULATING UNIT, FROSTED FILM, TEMPERED

C SINGLE GLAZED, TRANSPARENT C/W CERAMIC FRIT, TEMPERED

REFER TO DRAWINGS A1.6 FOR CERAMIC FRIT PATTERN

No.	DATE	REVISION / ISSUANCE
5	YY.MM.DD	-
4	YY.MM.DD	-
3	YY.MM.DD	-
2	YY.MM.DD	-
1	13.01.18	ISSUED FOR CONSTRUCTION



architecture inc.  
120 Fort Street, Suite 603 Winnipeg, Manitoba R3C 1C7 204.318.2016

Project: BID OPPORTUNITY 931 - 2012  
Seven Oaks Pool  
Front Entrance Upgrades  
444 ADSUM DRIVE

Sheet Title: REFLECTED CEILING PLAN, BUILDING & INTERIOR ELEVATIONS

Project No: 1125  
Date: FEBRUARY 21, 2013

**A1.3**