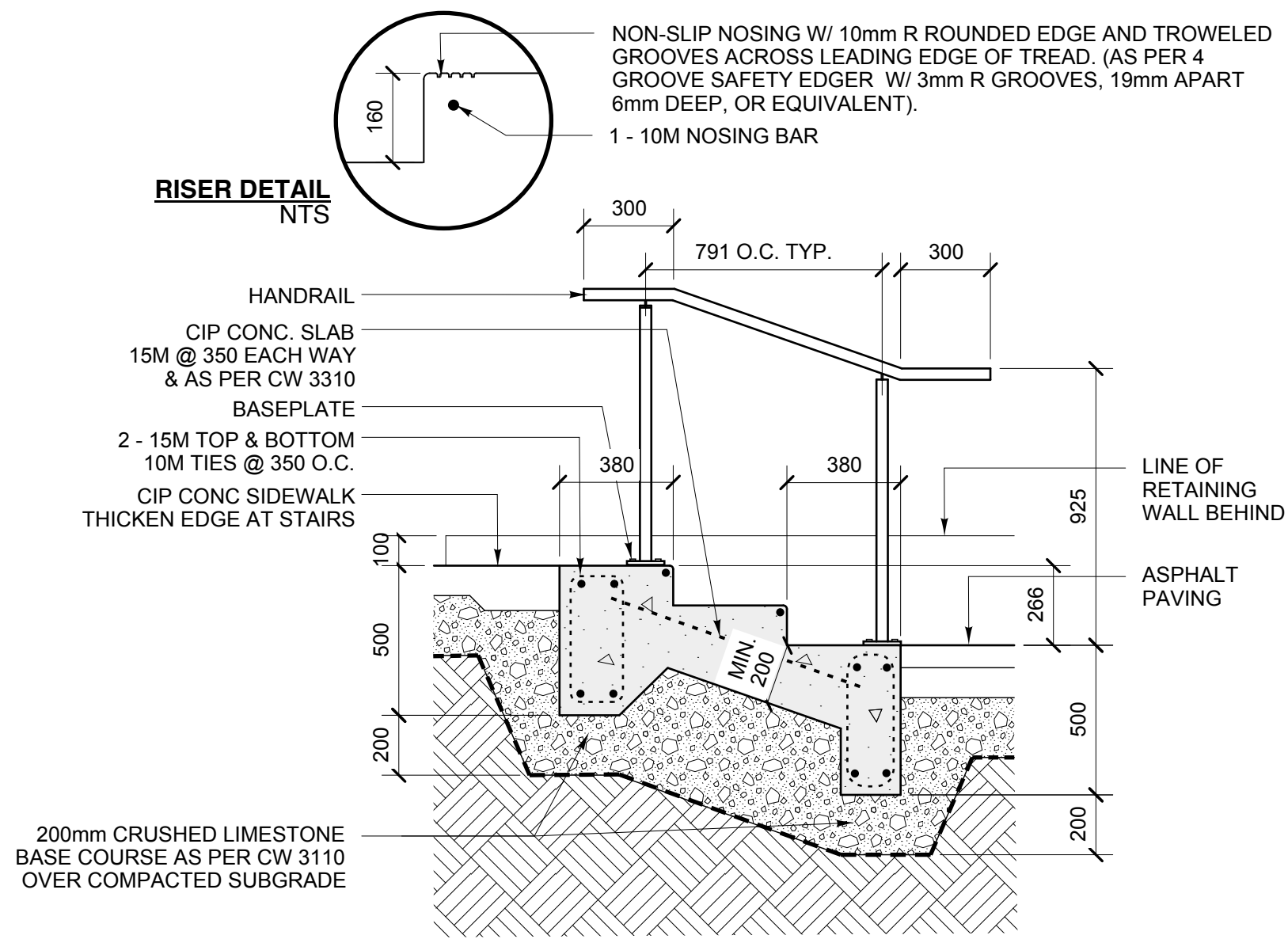
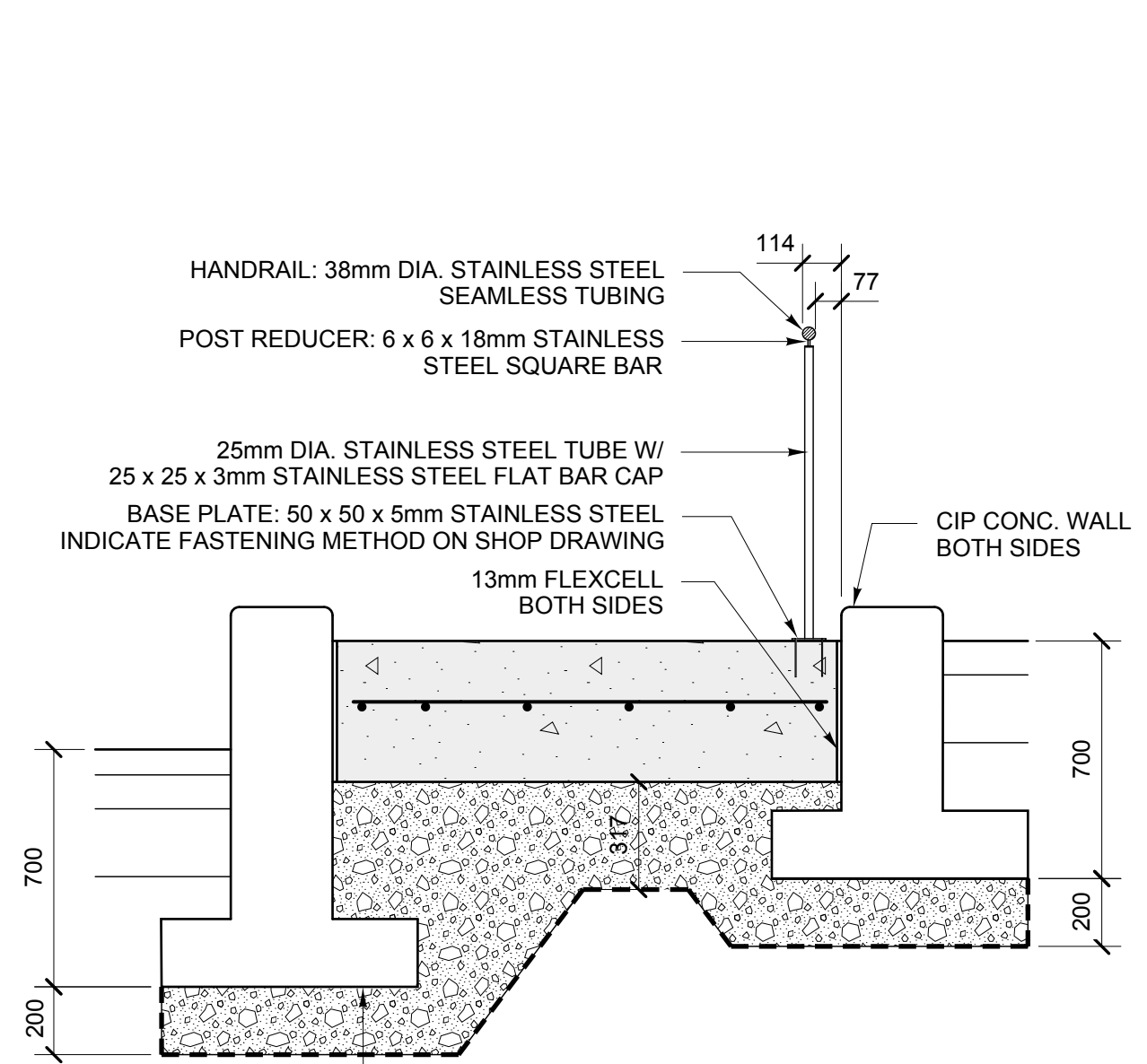


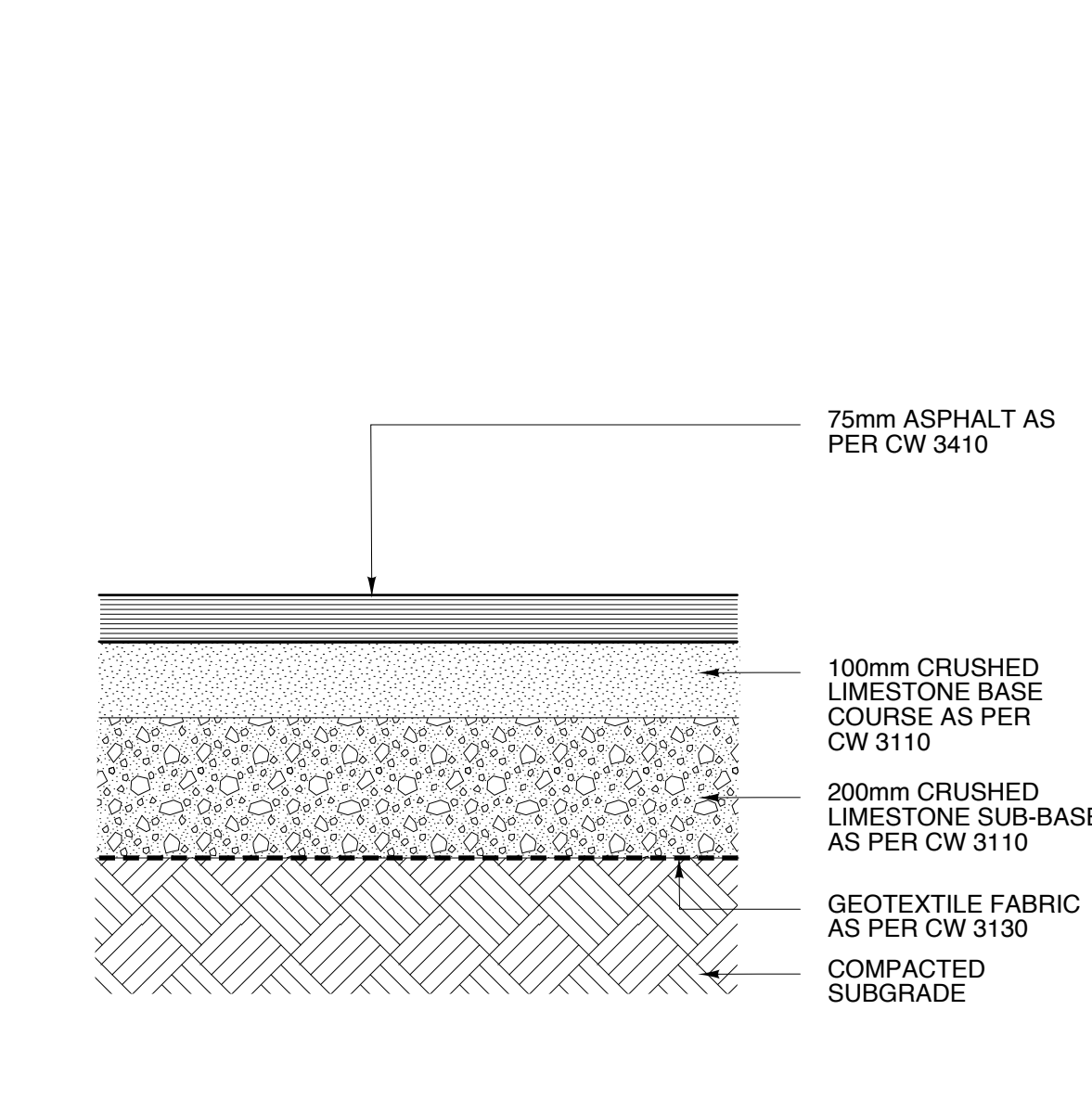
1 CIP CONCRETE STAIRS
L-3.0 SCALE: 1:20



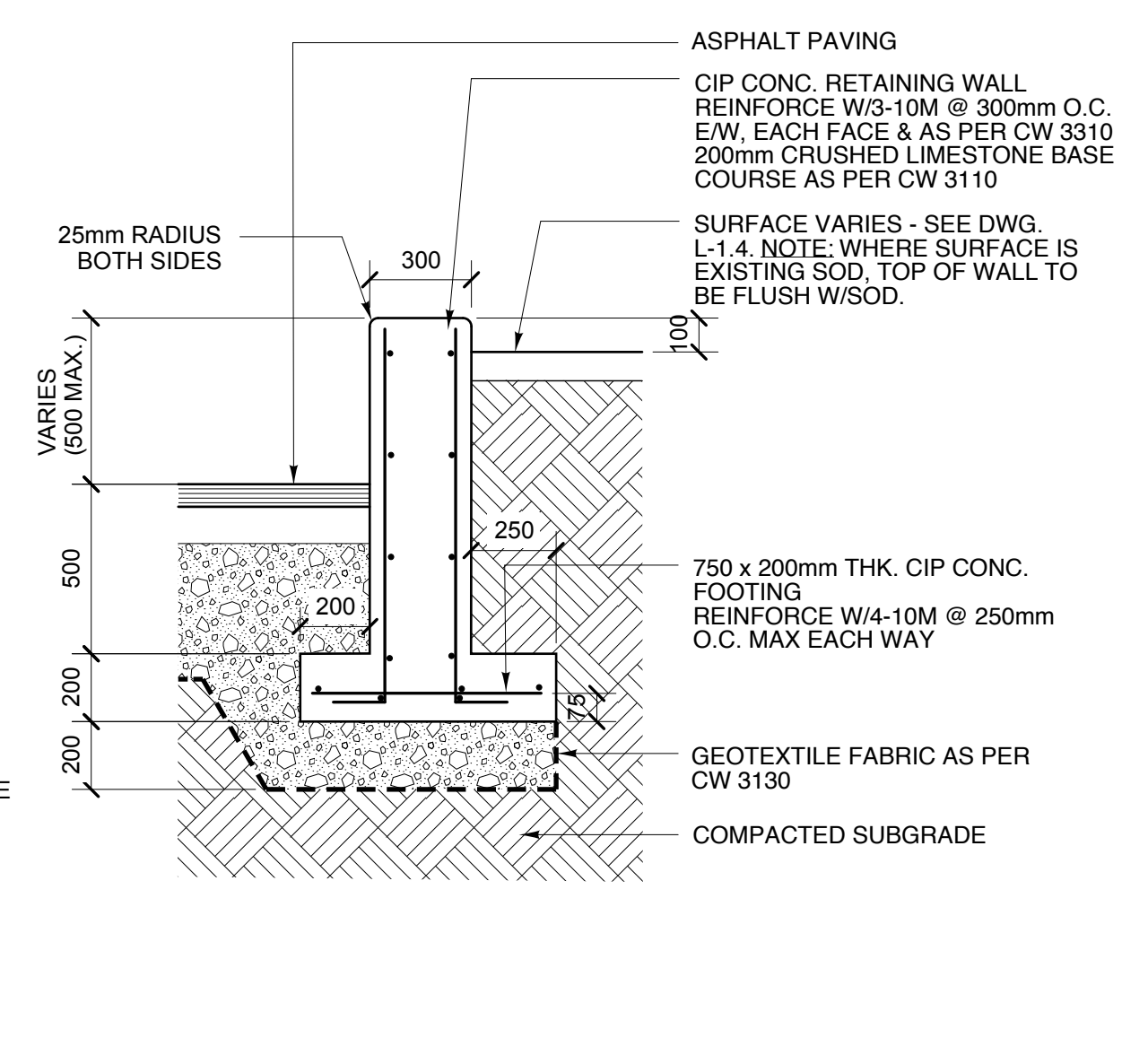
SECTION A-A
200mm CRUSHED LIMESTONE BASE COURSE AS PER CW 3110 OVER COMPACTED SUBGRADE



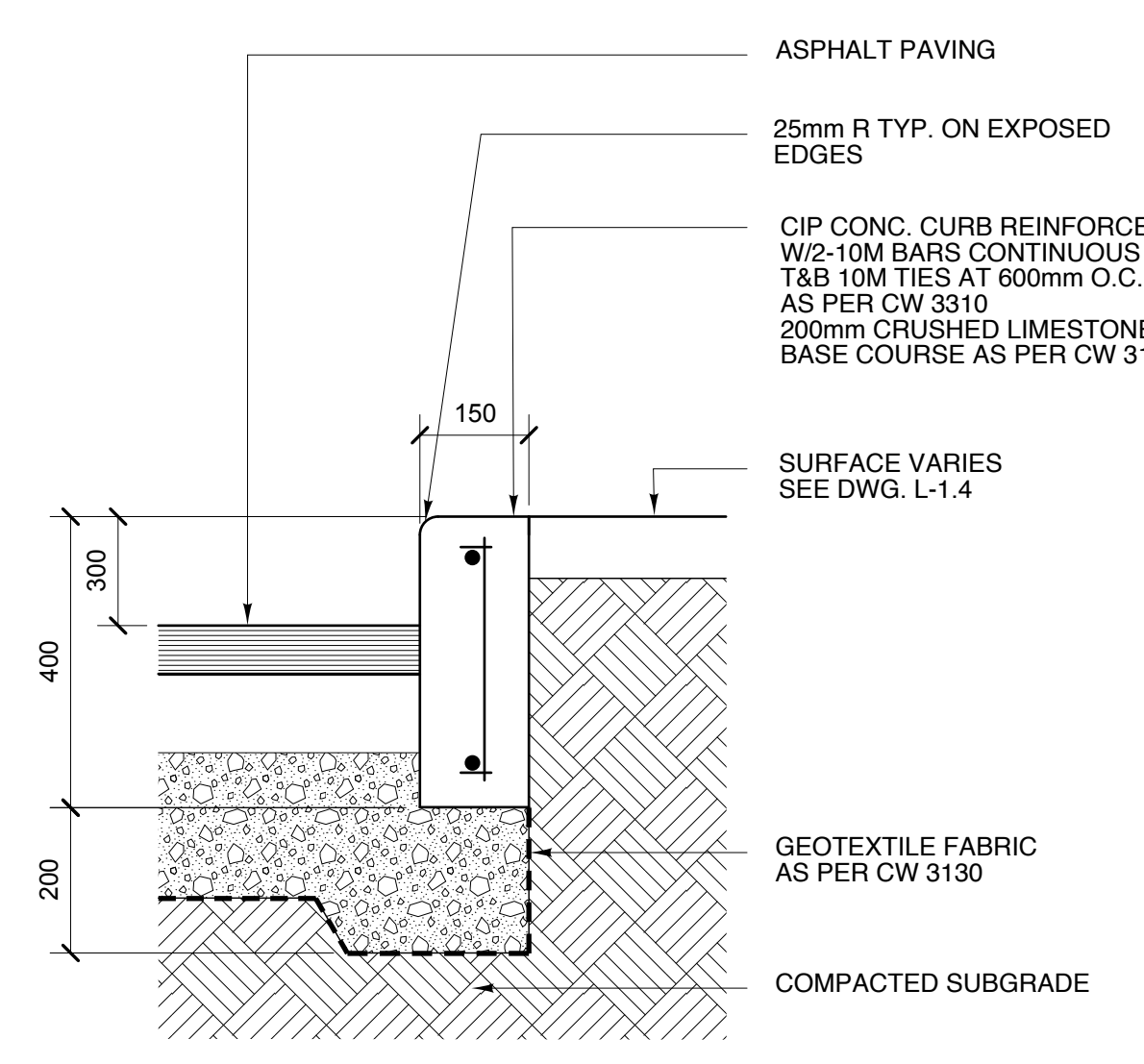
SECTION B-B
GEOTEXTILE FABRIC AS PER CW 3130



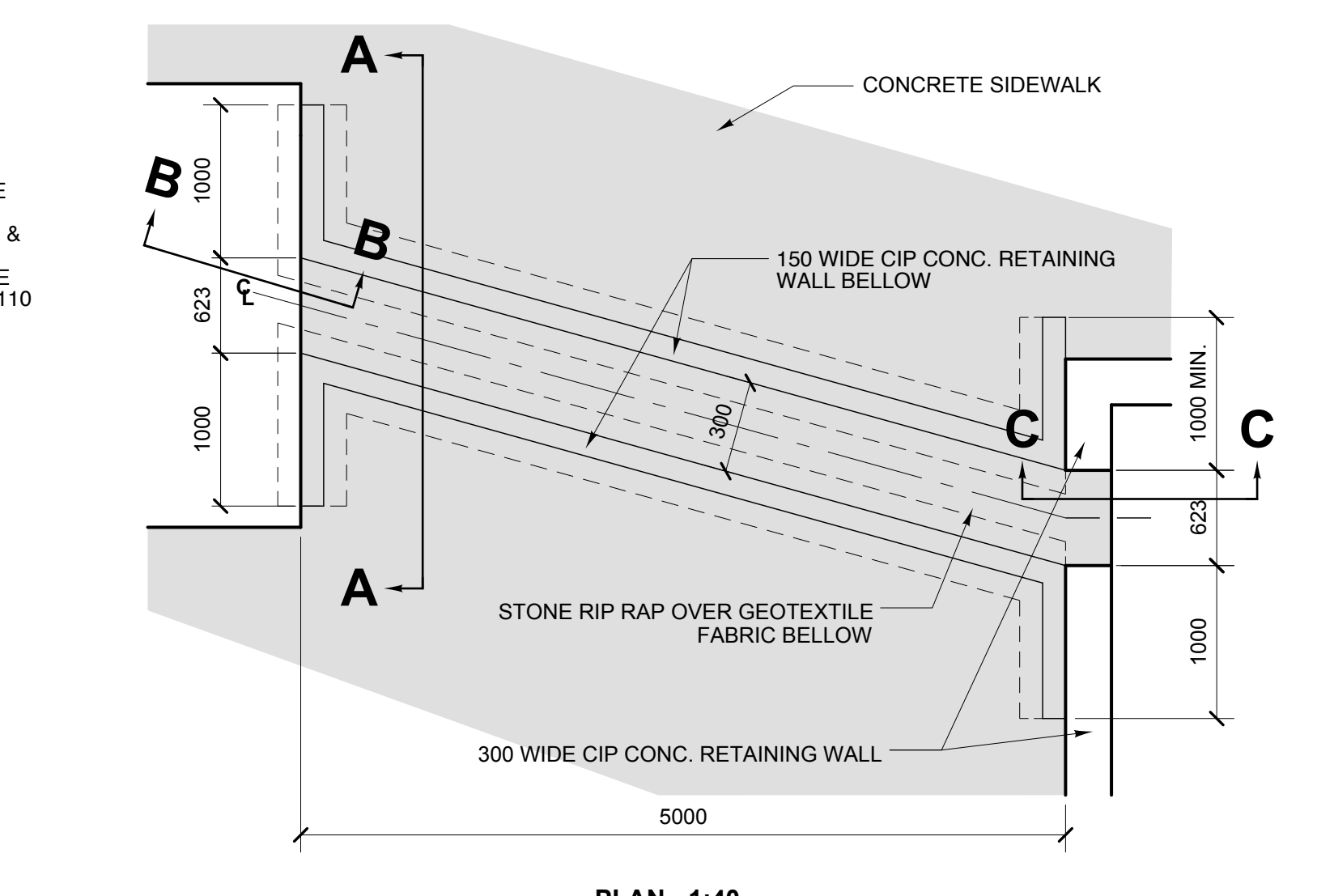
2 ASPHALT PAVING
L-3.0 SCALE: 1:10



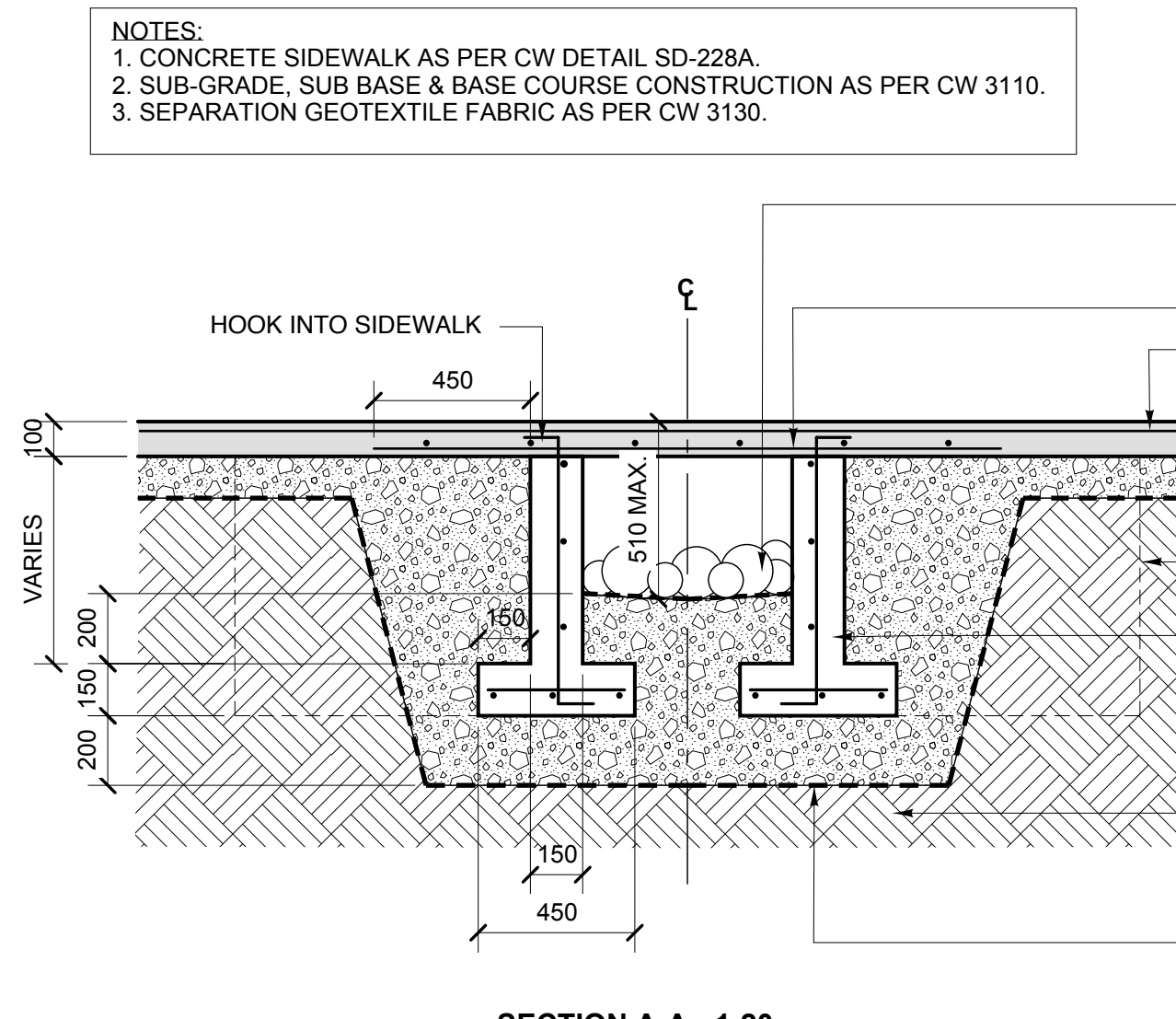
3 CIP CONCRETE RETAINING WALL
L-3.0 SCALE: 1:20



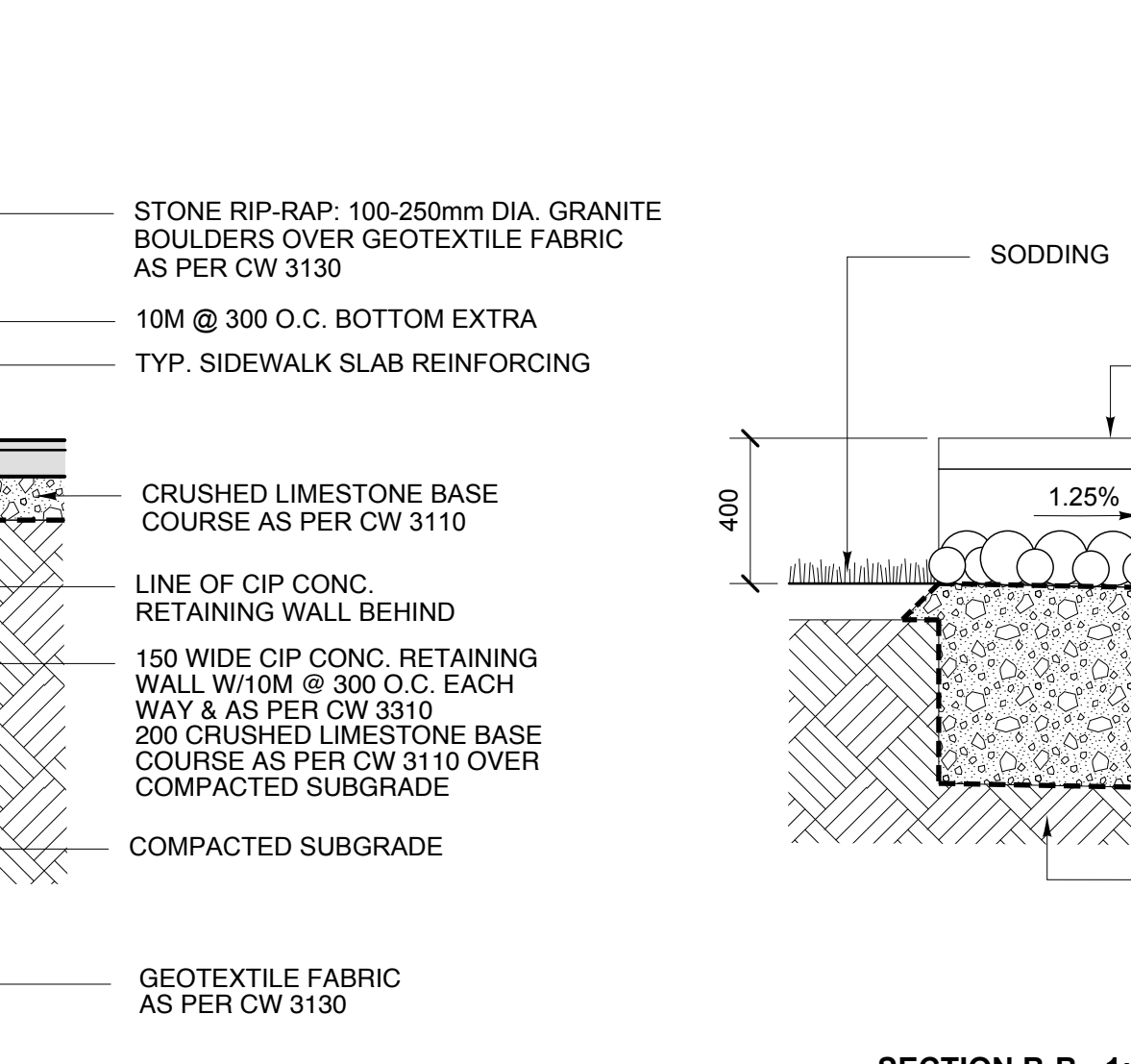
4 CIP CONCRETE CURB
L-3.0 SCALE: 1:10



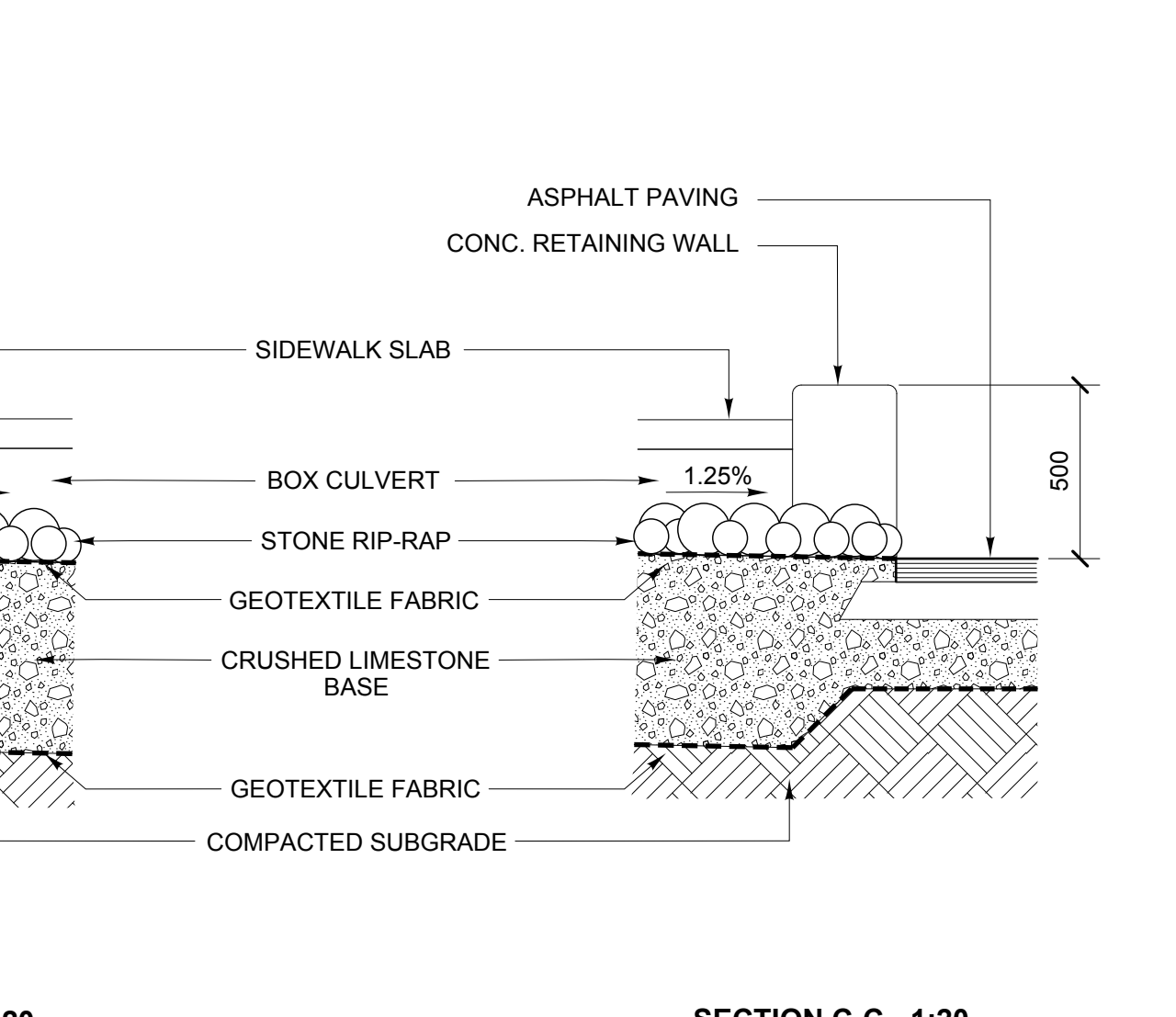
5 CONCRETE BOX CULVERT
L-3.0 SCALE: AS SHOWN



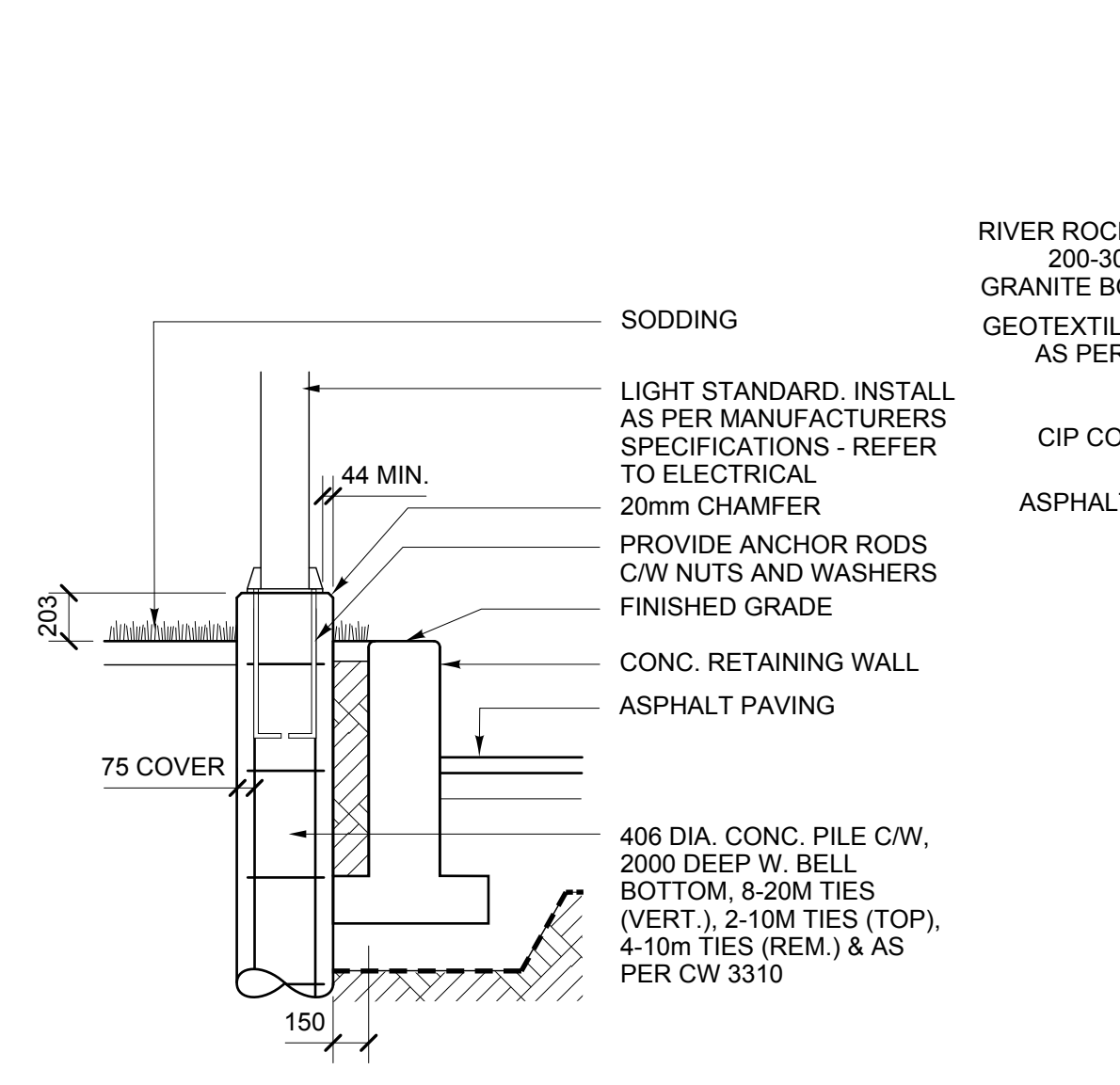
SECTION A-A - 1:20



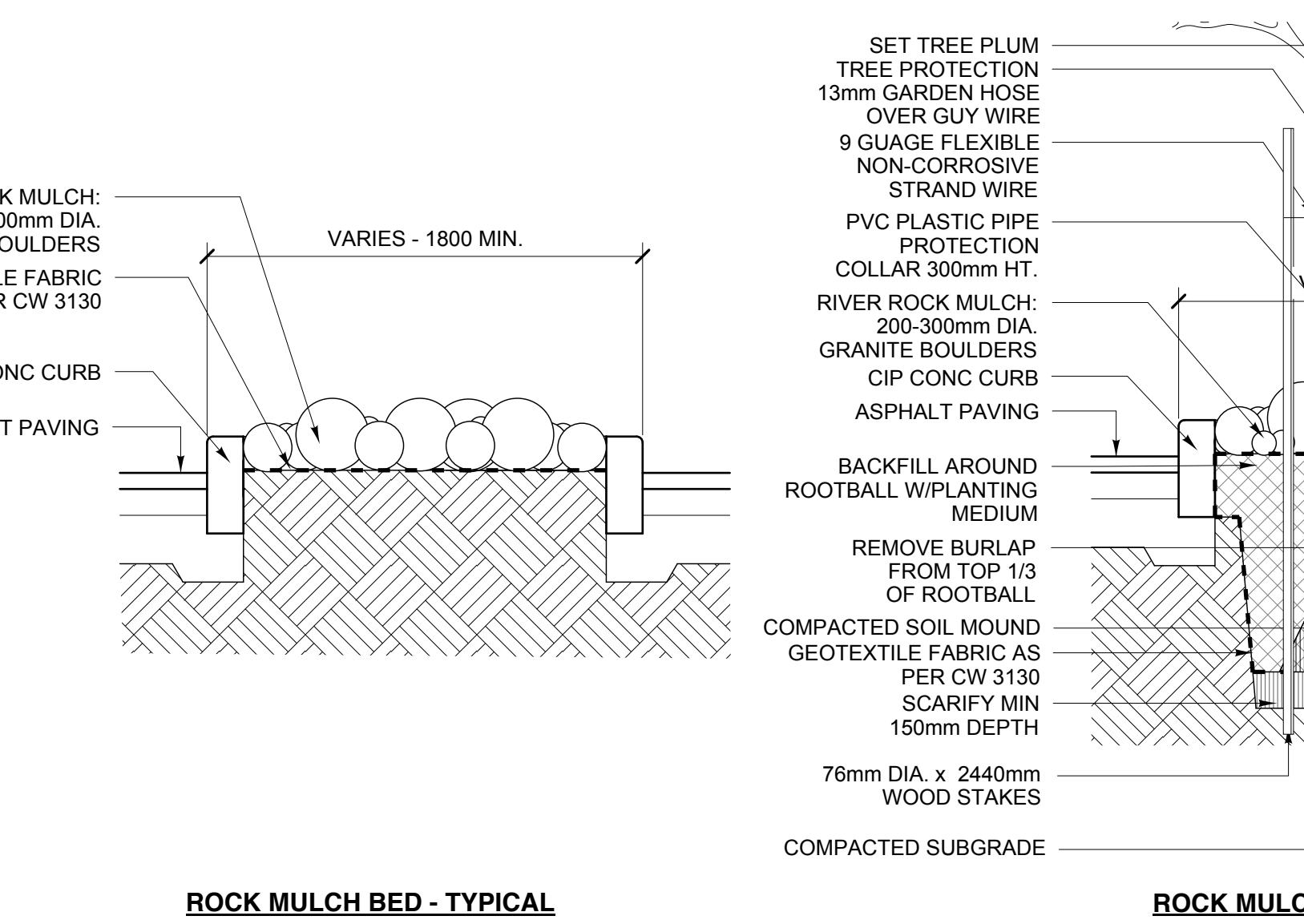
SECTION B-B - 1:20



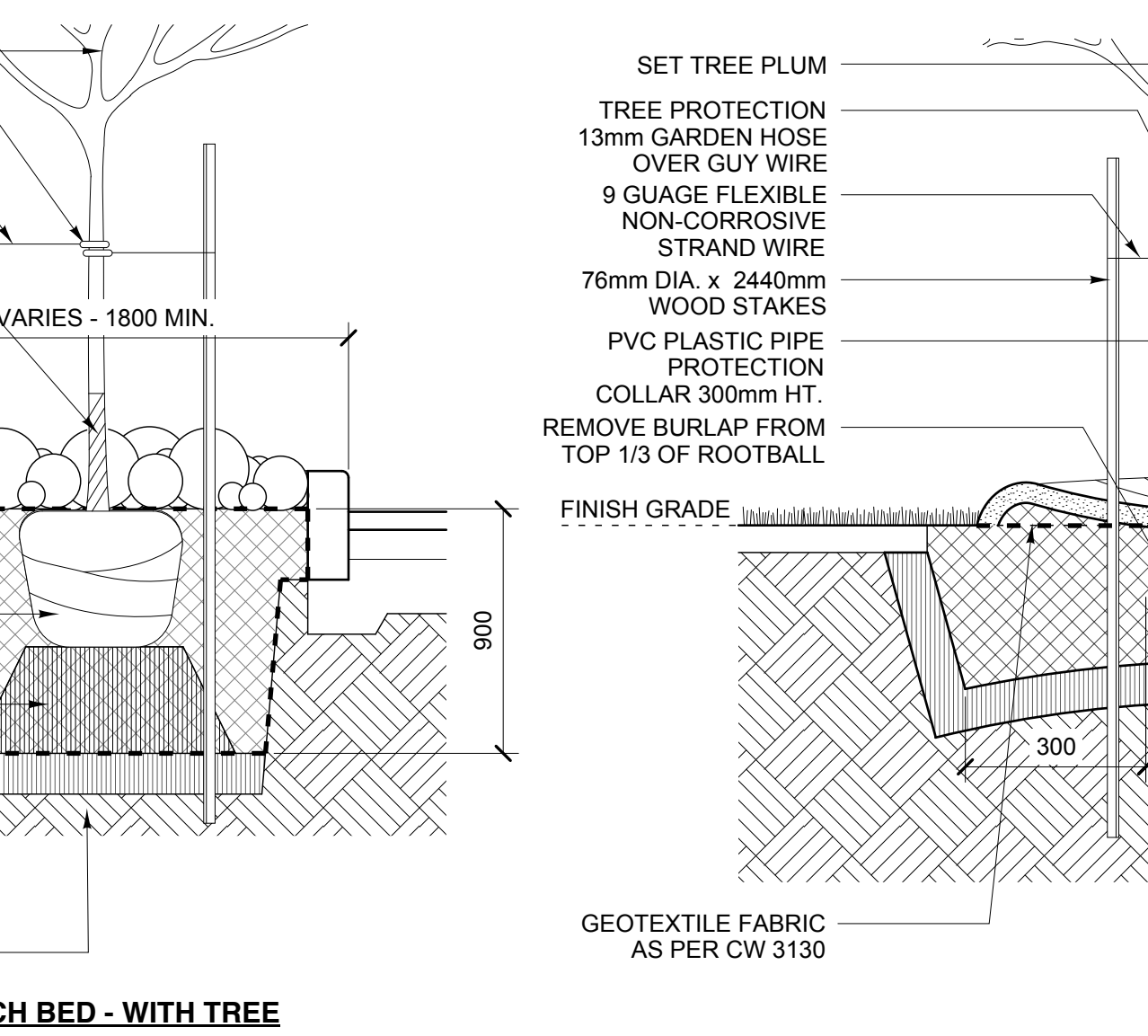
SECTION C-C - 1:20



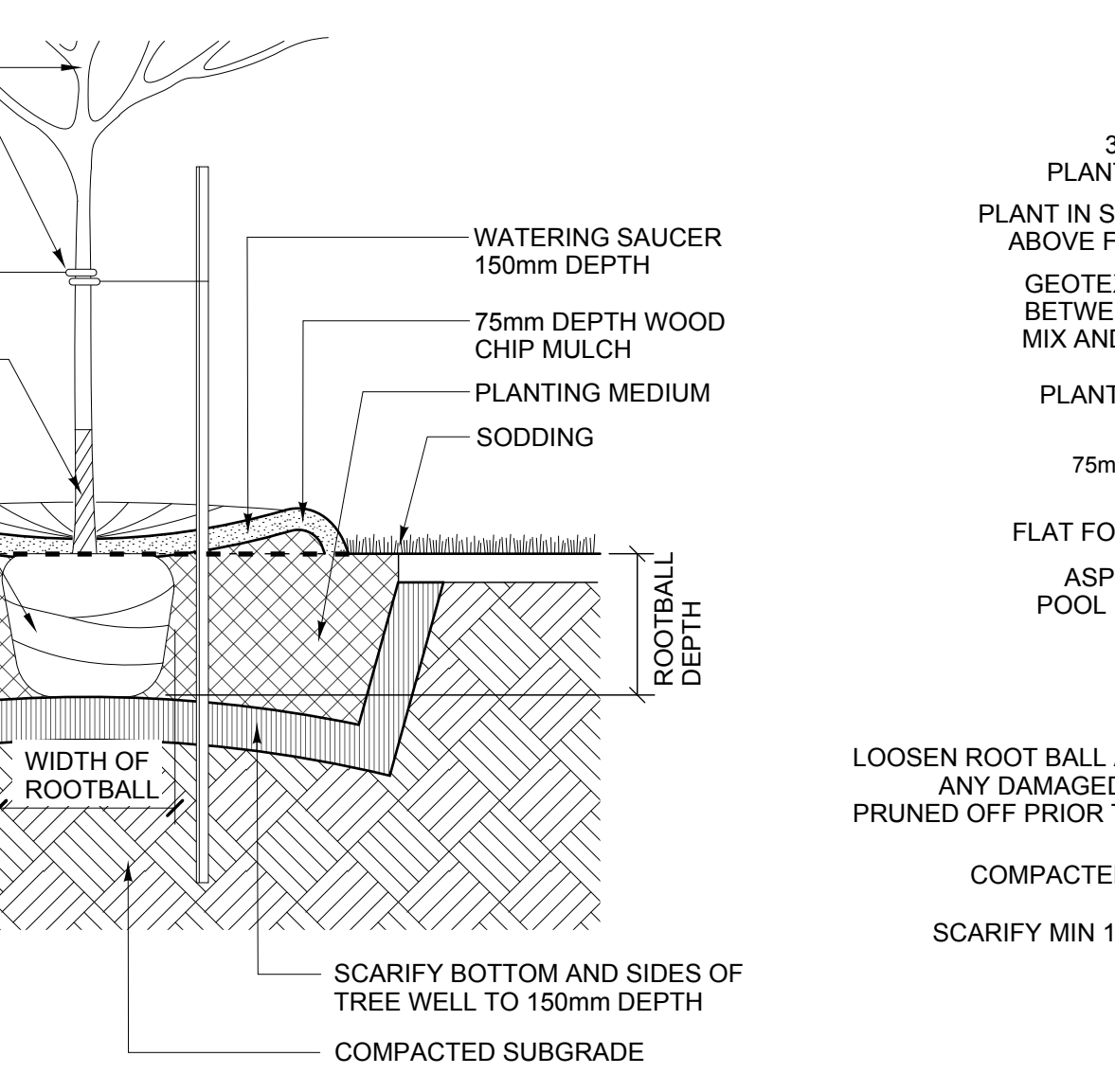
6 LIGHT STANDARD BASE
L-3.0 SCALE: 1:30



7 ROCK MULCH BED AND TREE PLANTING
L-3.0 SCALE: 1:20



8 DECIDUOUS TREE PLANTING
L-3.0 SCALE: 1:25



9 WOOD MULCH / PERENNIAL PLANTING BED
L-3.0 SCALE: 1:20

No.	Date	Issue/Revision	By
1	16/05/12	ISSUED FOR TENDER	AJH

Design	Drawn	Checked	Scale	Date	File
MAG	AJH	MAG	AS SHOWN	16/05/12	12-016

Client: **Winnipeg**
PLANNING PROPERTY AND DEVELOPMENT DEPARTMENT
3rd Floor - 65 Gary Street, Winnipeg, MB R2C 0K4

Electrical Engineer: **SMS ENGINEERING**
Contact Colin Mclachlan: 775-0291

Civil Engineer: **J.R. Cousin Consultants Ltd.**
Consulting Engineers and Project Managers
Contact Matt Fischer: 489-0474

Landscape Architect: **HILDERMAN THOMAS FRANK CRAM**
Landscape Architecture • Planning
Contact James Hudson: 944-9907

Project: **ST JAMES CENTENNIAL PARKING LOT EXPANSION**
WINNIPEG, MANITOBA
Sheet Title: **DETAILS**
Sheet No.: **L-3.0**

Friday, May 18, 2012

The general contractor shall check & verify all dimensions and report any errors or omissions to the designers.