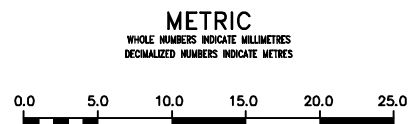
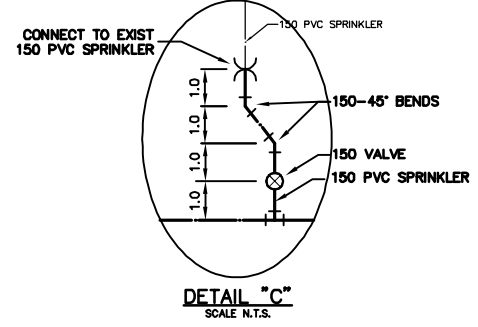
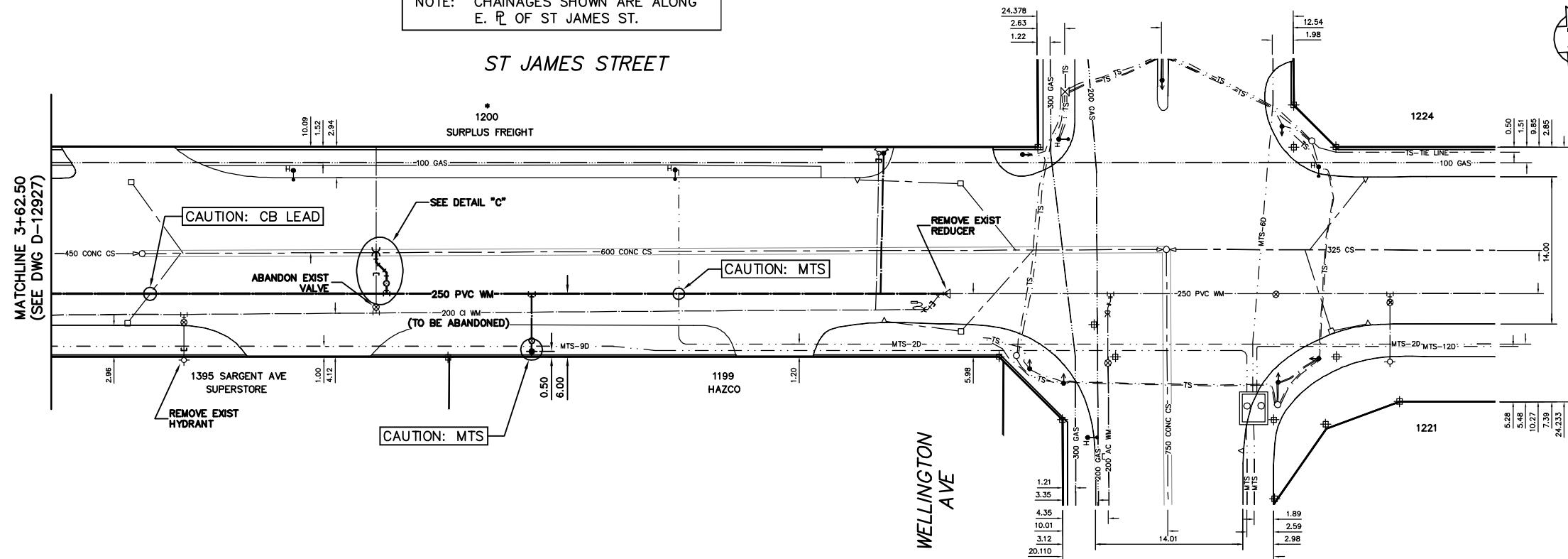


WATER SERVICE INFORMATION

ADDRESS	SIZE (mm)	MATERIAL	SHORT & LONG MEASUREMENT	CORP. LOCATION	REMARKS
1150 ST JAMES ST. COMMERCIAL	25 COPPER	25 COPPER	22.3 N 1ST HYD N SARGENT	0.3 S OF S/C	-
1170 ST JAMES ST. SPRINKLER	200 CI	200 CI	18.53 NNL BLDG	OPP S/C	RENEW W/ 200 PVC
1199 ST JAMES ST. SPRINKLER	200 CI	200 CI	179.80-NNL SARGENT	OPP S/C	SERV. OFF WELLINGTON
1200 ST JAMES ST. COMMERCIAL	200 COPPER	200 COPPER	9.34 WEL BLDG	OPP S/C	-
1200 ST JAMES ST. SPRINKLER	150 PVC	150 PVC	69.34 EEL ST JAMES	OPP S/C	RENEW W/ 25 COPPER
1395 SARGENT AVE. SPRINKLER	200 PVC	200 PVC	2.72 NNL BLDG	OPP S/C	-
			15.12 SSL WELLINGTON	0.3 S OF S/C	-
			45.37 SSL BLDG	OPP S/C	-
			65.16 SSL WELLINGTON	OPP S/C	-
			22.0 SSL BLDG	OPP S/C	SERV. OFF ST JAMES
			167.75 NNL ST JAMES	OPP S/C	-

* SERVICES TO BE RENEWED TO R. ALL OTHERS TO BE RECONNECTED

NOTE: CHAINAGES SHOWN ARE ALONG E. R. OF ST JAMES ST.



WARNING

IF POWER EQUIPMENT OR EXPLOSIVES ARE TO BE USED FOR EXCAVATION ON THIS PROJECT THE CONTRACTOR MUST:

- NOTIFY THE GAS COMPANY OF THE PROPOSED LOCATION OF EXCAVATION.
- TAKE PRECAUTION TO AVOID DAMAGE TO GAS COMPANY INSTALLATIONS.

SEE PROVINCIAL REGULATION 21072 FOR DETAILS

LOCATION APPROVED UNDERGROUND STRUCTURES

SUPV. U/G STRUCTURES COMMITTEE DATE

NOTE: LOCATION OF UNDERGROUND STRUCTURES AS SHOWN ARE BASED ON THE BEST INFORMATION AVAILABLE BUT NO GUARANTEE IS GIVEN THAT ALL EXISTING UTILITIES ARE SHOWN OR THAT THE GIVEN LOCATIONS ARE EXACT. CONFIRMATION OF EXISTENCE AND EXACT LOCATION OF ALL SERVICES MUST BE OBTAINED FROM THE INDIVIDUAL UTILITIES BEFORE PROCEEDING WITH CONSTRUCTION.

NO.	REVISIONS	DATE	BY	DATE
				2012 03 27

DESIGNED BY	NC	CHECKED BY	SC
DRAWN BY	CJH	APPROVED BY	KZ
SCALE:		RELEASED FOR CONSTRUCTION	
HORIZONTAL	1:250		
VERTICAL	1:50		
PLOT DATE:	2012 03 27	DATE	

ENGINEER'S SEAL

ORIGINAL SIGNED BY S.R.J. COURNOYER 12-03-27

CONSULTANT DRAWING NUMBER

THE CITY OF WINNIPEG
 WATER AND WASTE DEPARTMENT
 ENGINEERING DIVISION

2012 WATERMAIN RENEWALS

ST JAMES STREET
 262.50 N OF SARGENT AVENUE TO WELLINGTON AVENUE

SHEET 12 OF 12
 CITY DRAWING NUMBER D-12928