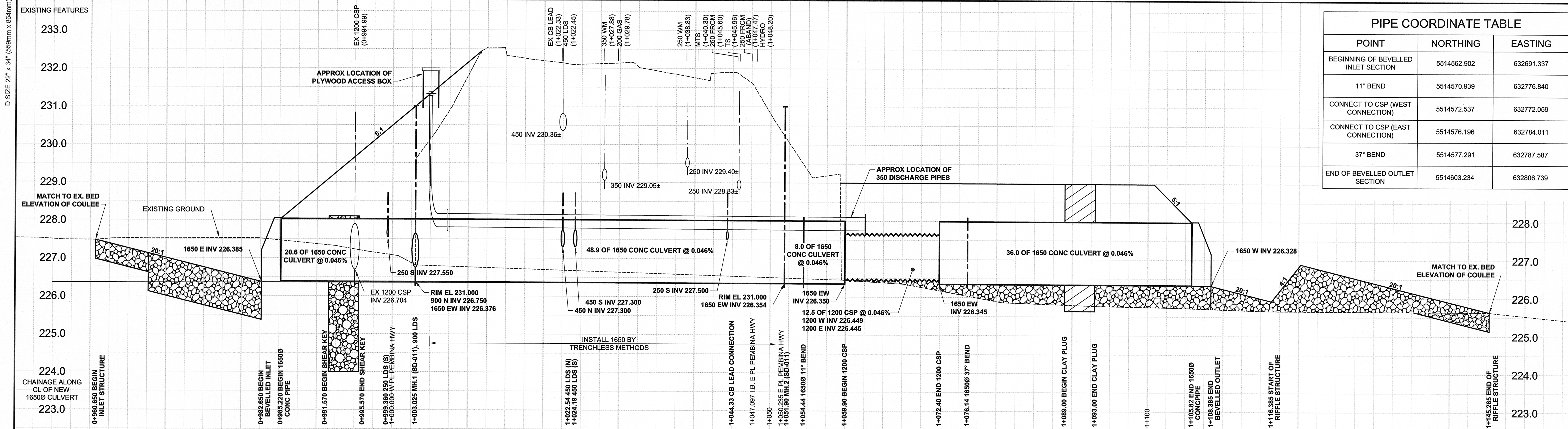
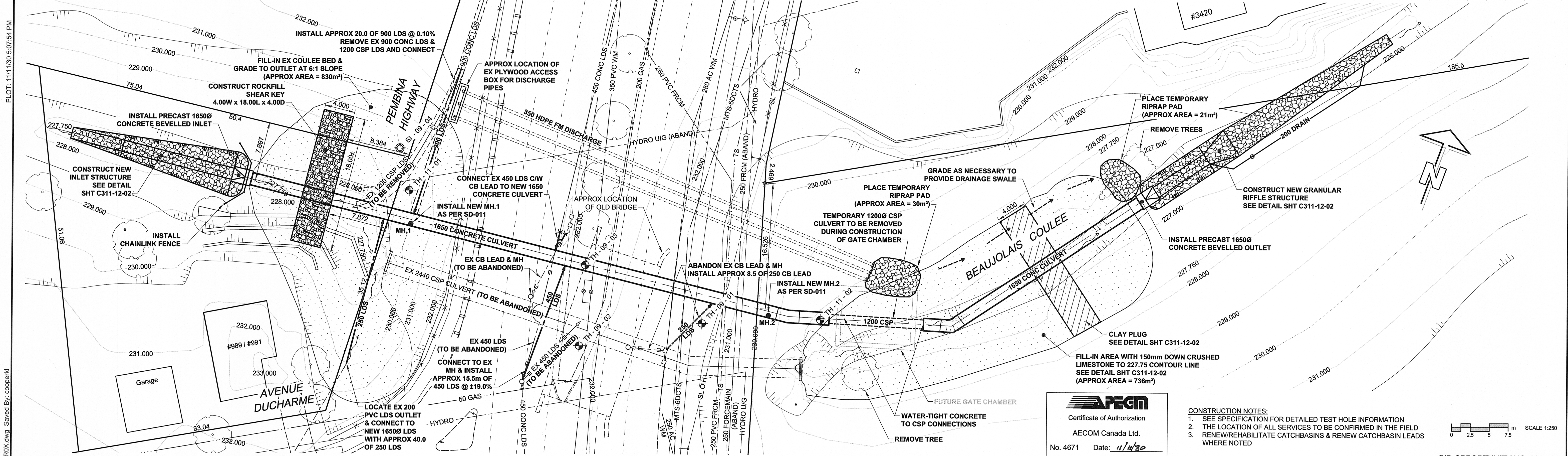


D SIZE 22" x 34" (559mm x 864mm)

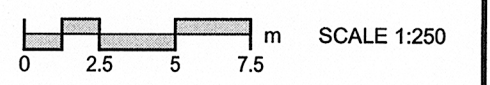


POINT	NORTHING	EASTING
BEGINNING OF BEVELLED INLET SECTION	5514562.902	632691.337
11" BEND	5514570.939	632776.840
CONNECT TO CSP (WEST CONNECTION)	5514572.537	632772.059
CONNECT TO CSP (EAST CONNECTION)	5514576.196	632784.011
37" BEND	5514577.291	632787.587
END OF BEVELLED OUTLET SECTION	5514603.234	632806.739



AECOM
 Certificate of Authorization
 AECOM Canada Ltd.
 No. 4671 Date: 11/13/20

- CONSTRUCTION NOTES:
- SEE SPECIFICATION FOR DETAILED TEST HOLE INFORMATION
 - THE LOCATION OF ALL SERVICES TO BE CONFIRMED IN THE FIELD
 - RENEW/REHABILITATE CATCHBASINS & RENEW CATCHBASIN LEADS WHERE NOTED



BID OPPORTUNITY NO. 980-2011

EXISTING	LEGEND - PLAN	NEW	EXISTING	LEGEND - PLAN	NEW	EXISTING	LEGEND - PROFILE	NEW
150 WM	WATERMAIN	150 WM	150 WM	WATERMAIN	150 WM	300 LDS	WATERMAIN	300 LDS
300 LDS	LAND DRAINAGE SEWER	300 LDS	300 LDS	LAND DRAINAGE SEWER	300 LDS	250 WWS	WASTE WATER SEWER	250 WWS
250 WWS	WASTE WATER SEWER	250 WWS	250 WWS	WASTE WATER SEWER	250 WWS		PAVEMENT CROWN	
○	MANHOLE	●	○	MANHOLE	●		GROUNDLINE	
□	CATCH BASIN	■	□	CATCH BASIN	■			
△	CURB INLET	▲	△	CURB INLET	▲			
---	CULVERT	---	---	CULVERT	---			
+	COMMUNITY MAILBOX	+	+	COMMUNITY MAILBOX	+			
+	SURVEY BAR	+	+	SURVEY BAR	+			

LOCATION APPROVED	UNDERGROUND STRUCTURES
SUPR. U/G STRUCTURES	DATE
COMMITTEE	
NOTE:	
LOCATION OF UNDERGROUND STRUCTURES AS SHOWN ARE BASED ON THE BEST INFORMATION AVAILABLE. BUT NO GUARANTEE IS GIVEN THAT ALL EXISTING UTILITIES ARE SHOWN OR THAT THE GIVEN LOCATIONS ARE EXACT. CONFIRMATION OF EXISTENCE AND EXACT LOCATION OF ALL UTILITIES MUST BE OBTAINED FROM THE INDIVIDUAL UTILITIES BEFORE PROCEEDING WITH CONSTRUCTION.	

DESIGNED BY	JAT	CHECKED BY	[Signature]
DRAWN BY	KMB/KLC	APPROVED BY	[Signature]
HOR. SCALE	1:250	RELEASED FOR CONSTRUCTION	
VERT. SCALE	1:50	DATE	
0	ISSUED FOR CONSTRUCTION	11/11/30	KLC
NO.	REVISIONS	YYMMDD	BY

PROFESSIONAL'S SEAL
 AECOM Canada Ltd.
 No. 4671 Date: 11/13/20

THE CITY OF WINNIPEG
PUBLIC WORKS DEPARTMENT

INSTALLATION OF CONCRETE CULVERT AT PEMBINA HIGHWAY & BEAUJOLAIS COULEE

CIVIL
 PLAN/PROFILE OF CULVERT

SHEET 1 OF 3
 CITY DRAWING NUMBER
C311-12-02

REV 0

AECOM REVIEW DRAFT CHK

AECOM FILE NAME: 60221826-01-C-101-ROX.dwg Saved By: coopek