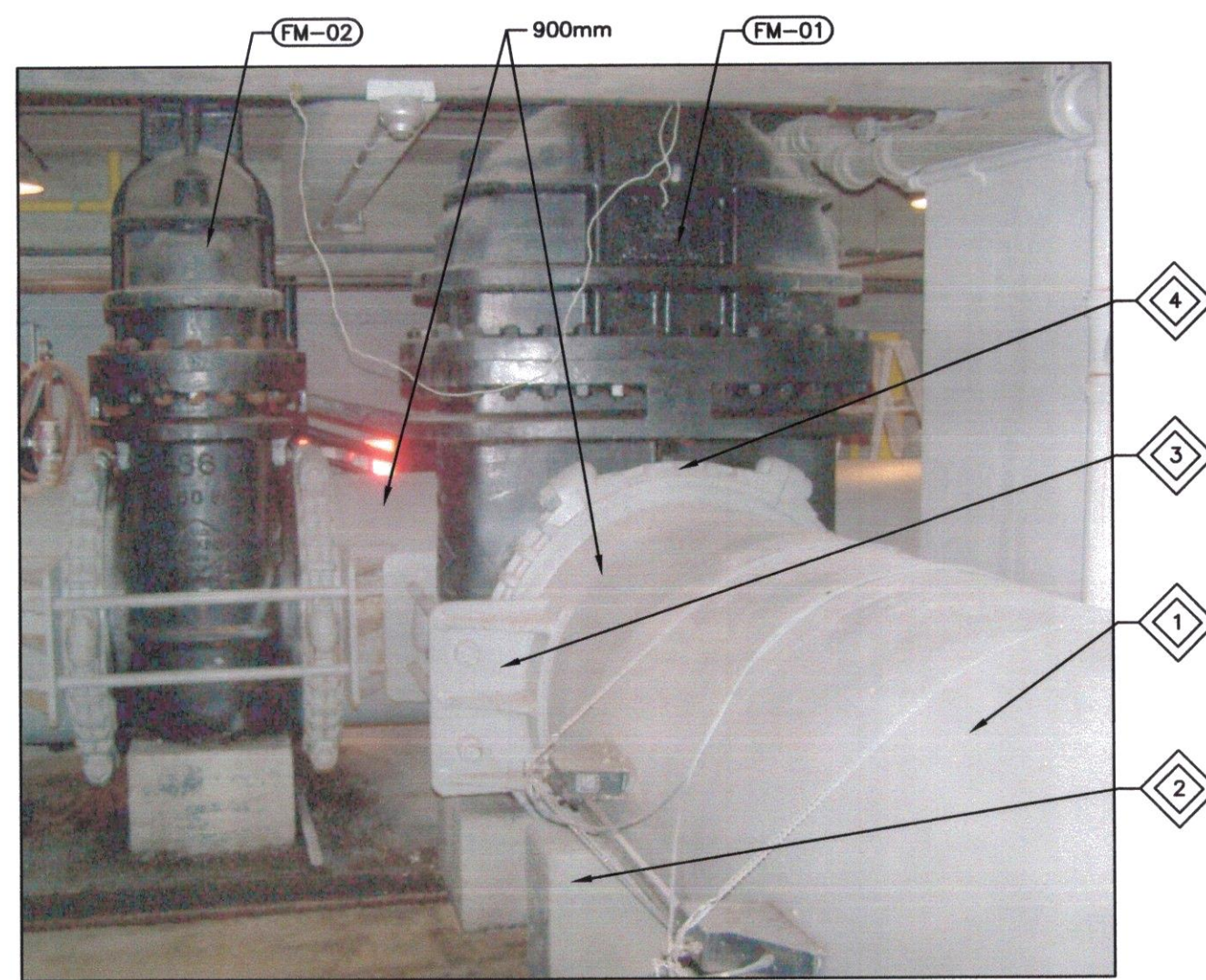
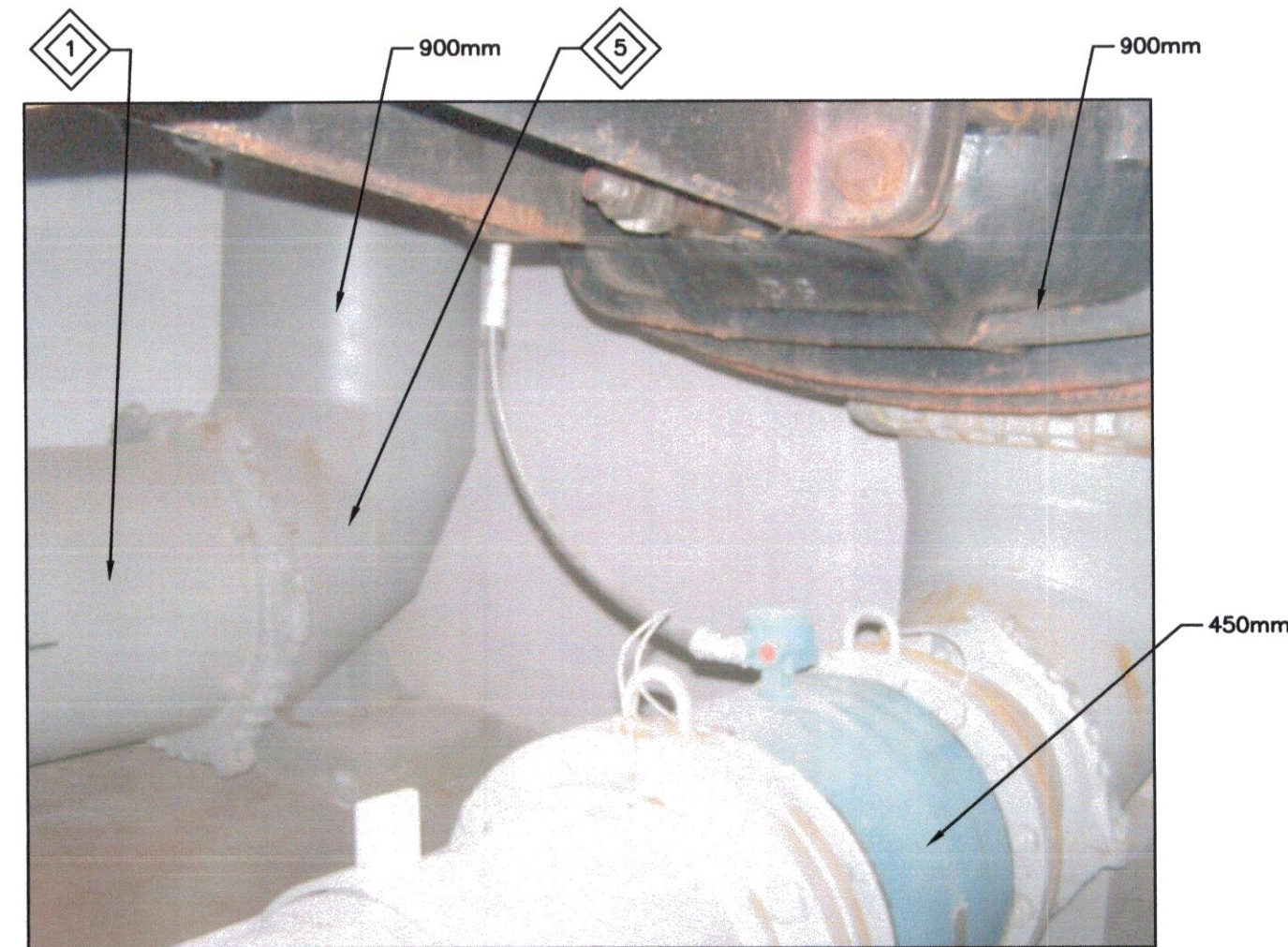


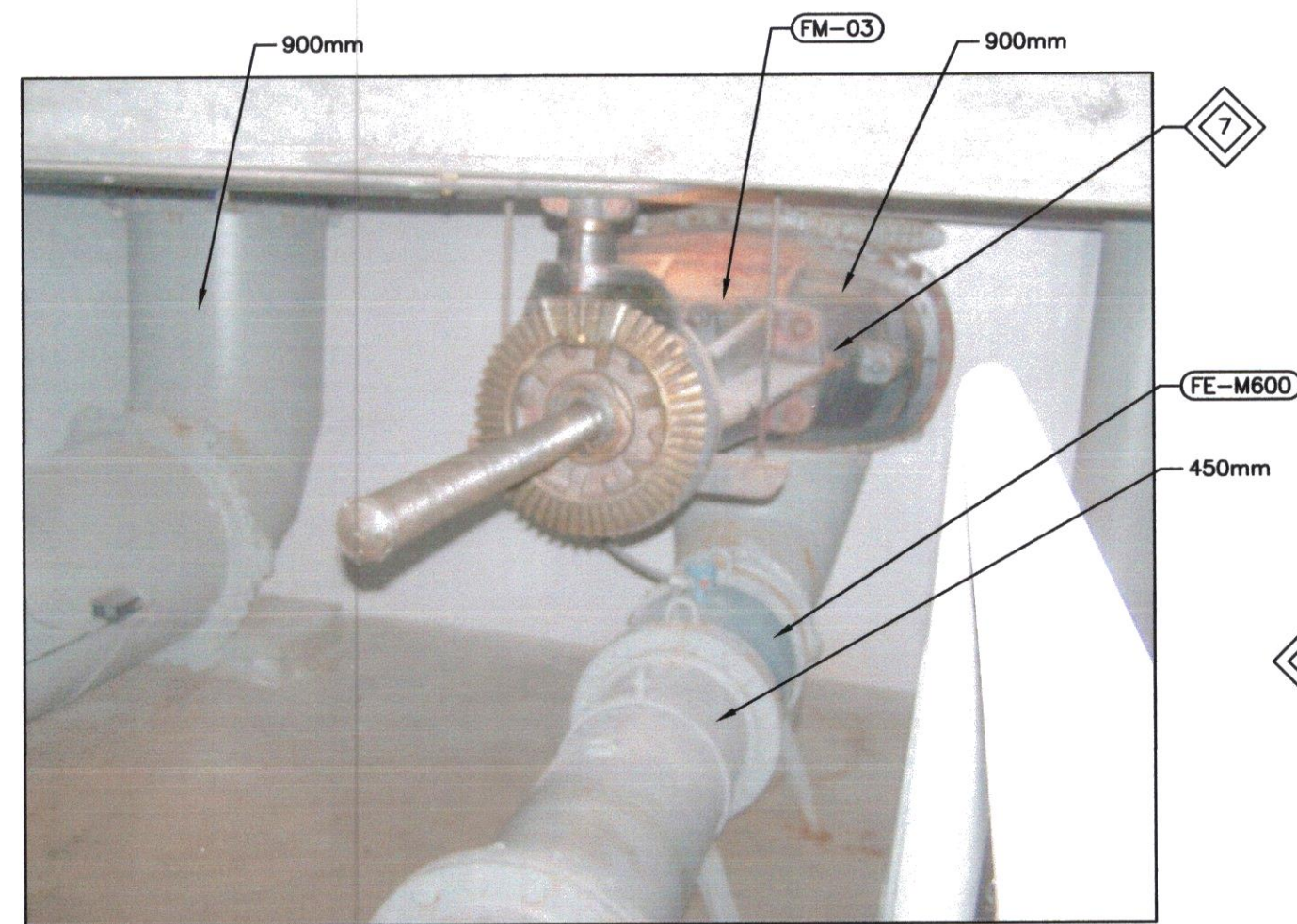
1 SHUTDOWN 5 - DEMOLITION FOR NEW MAGMETER
M2



2 SHUTDOWN 5 - DEMOLITION FOR NEW MAGMETER
M2



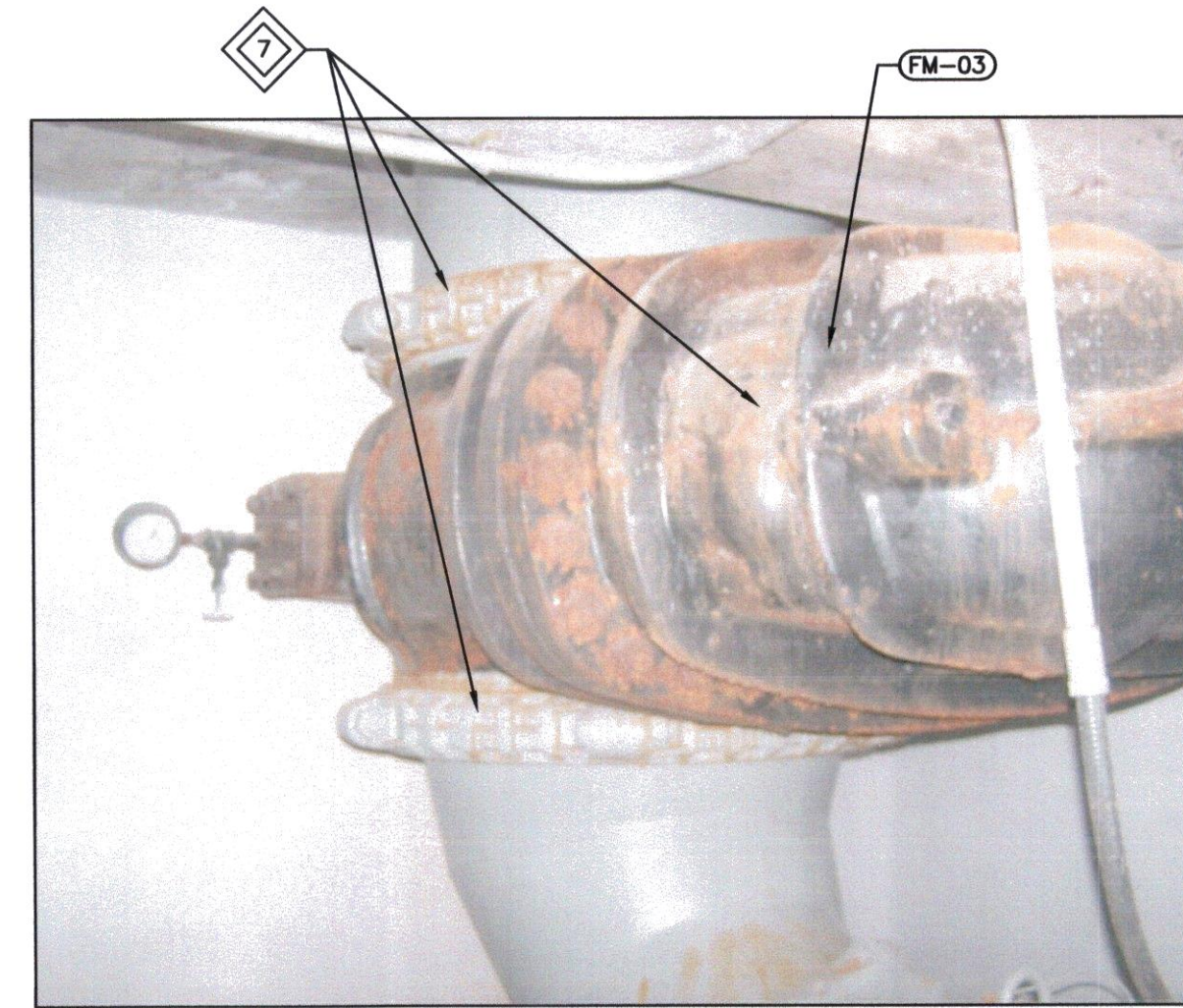
3 SHUTDOWN 5 - DEMOLITION FOR NEW MAGMETER
M2



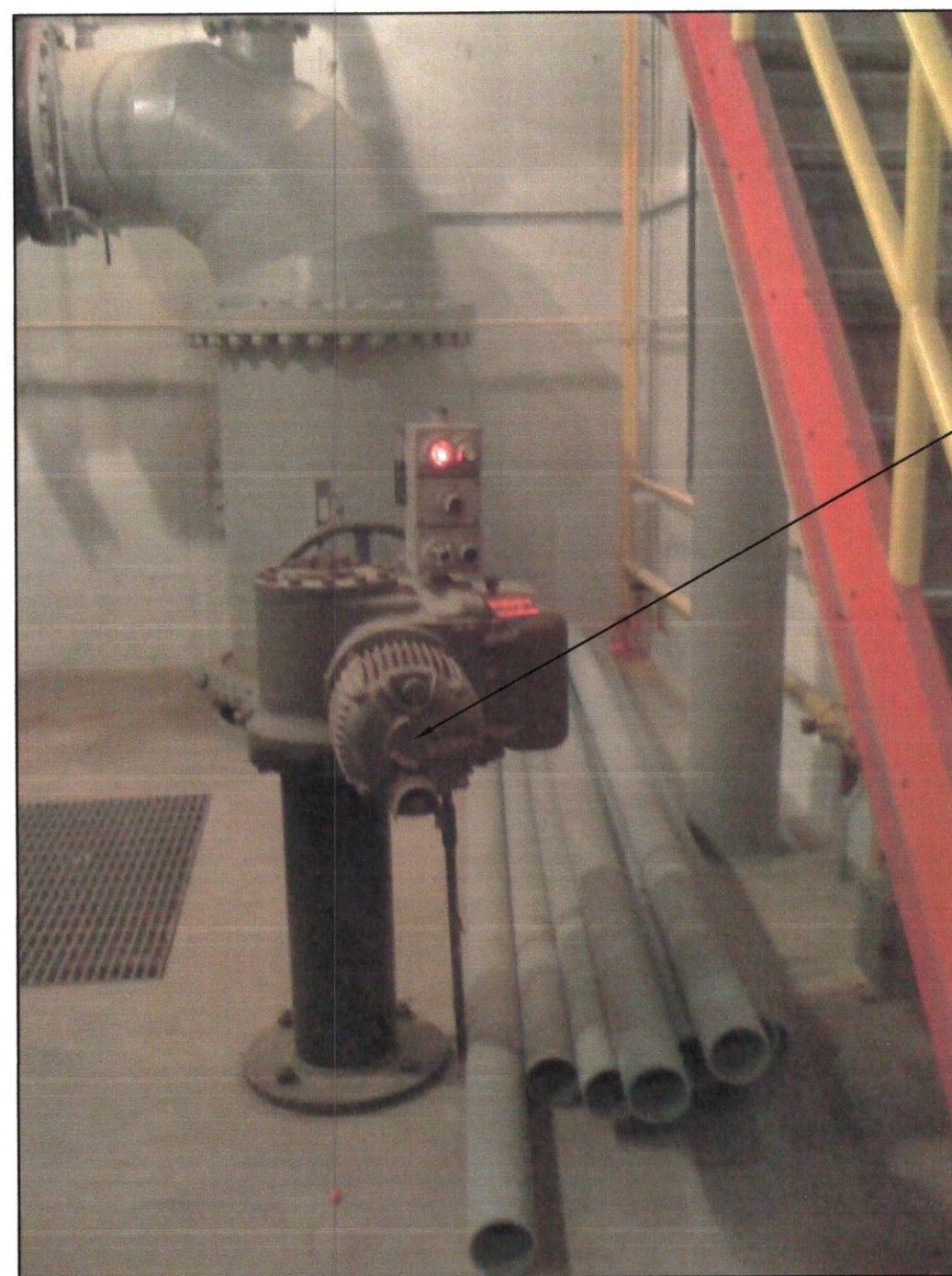
4 SHUTDOWN 6 - DEMOLITION VALVE FM-03
M2



5 SHUTDOWN 6 - DEMOLITION VALVE FM-03
M2



6 SHUTDOWN 6 - DEMOLITION VALVE FM-03
M2



7 SHUTDOWN 7 - FM-03 ACTUATOR (LEVEL 300)
M2



8 SHUTDOWN 7 - CONTROL VALVE P1-02
M2

KEY NOTES:

- 1 REMOVE EXISTING 900mm PIPING FROM VALVE FM-01 COUPLING UP TO AND INCLUDING DOWNSTREAM ELBOW.
- 2 REMOVE EXISTING SUPPORT.
- 3 EXISTING VALVE COUPLING RESTRAINT. MODIFY TO MATCH EXISTING RESTRAINT QUALITY & REWELD TO NEW 900mm x 450mm REDUCER & REPAINT (ONE OF TWO SHOWN)
- 4 REMOVE AND REPLACE EXISTING VICTAULIC COUPLING.
- 5 REMOVE EXISTING 900mm ELBOW, REPLACE WITH 900mm x 450mm REDUCING ELBOW.
- 6 REMOVE EXISTING 500mm SPOOL PIECE AND COUPLING.
- 7 REMOVING EXISTING 900mm VALVE FM-03 AND VICTAULIC COUPLINGS.
- 8 REMOVE EXISTING 450mm PIPE SECTION AND COUPLING. PROVIDE TEMPORARY MAGMETER SUPPORT AS REQUIRED.
- 9 REMOVE FM-03 ELECTRIC ACTUATOR ON LEVEL 300
- 10 REMOVE EXISTING VALVE (P1-02)

APEGM
Certificate of Authorization
KGS Group
No. 245 Date:

FIELD BOOK #:	
POSTED TO LRIS	
NO. REVISIONS	DATE BY
0	ISSUED FOR TENDER 11 11 07

KGS GROUP CONSULTING ENGINEERS	
DESIGNED BY: RED	CHECKED BY: JS
DRAWN BY: MSL	APPROVED BY: RED
HDR. SCALE: N.T.S.	RELEASED FOR CONSTRUCTION
VERTICAL: N.T.S.	
DATE: 2011 07 15	DATE:

ENGINEER'S SEAL
PROVINCE OF MANITOBA
R.E. DERKSEN
REGISTERED PROFESSIONAL ENGINEER
M02

THE CITY OF WINNIPEG
WATER AND WASTE DEPARTMENT
REPLACEMENT OF RAW SEWAGE PUMP P-3
PERIMETER ROAD PUMPING STATION
MECHANICAL
LEVEL 200
ADDITIONAL DEMOLITION

SHEET 1 OF 1
CITY DRAWING NUMBER