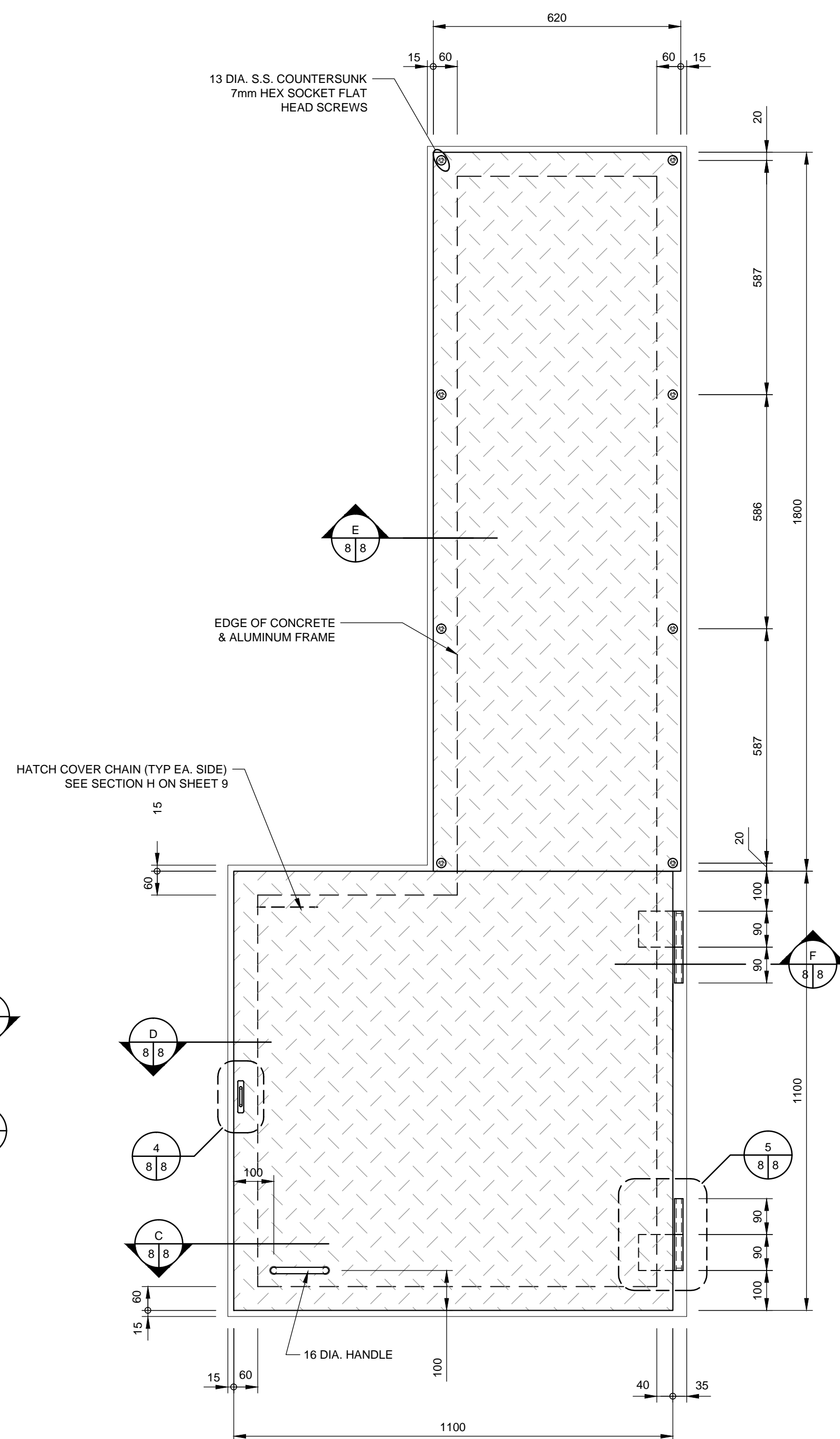
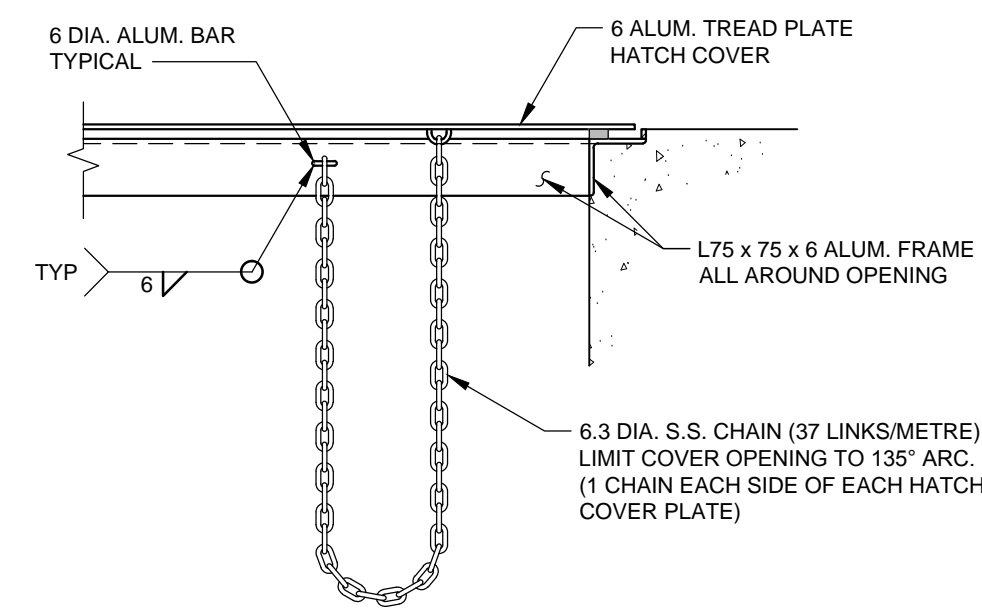


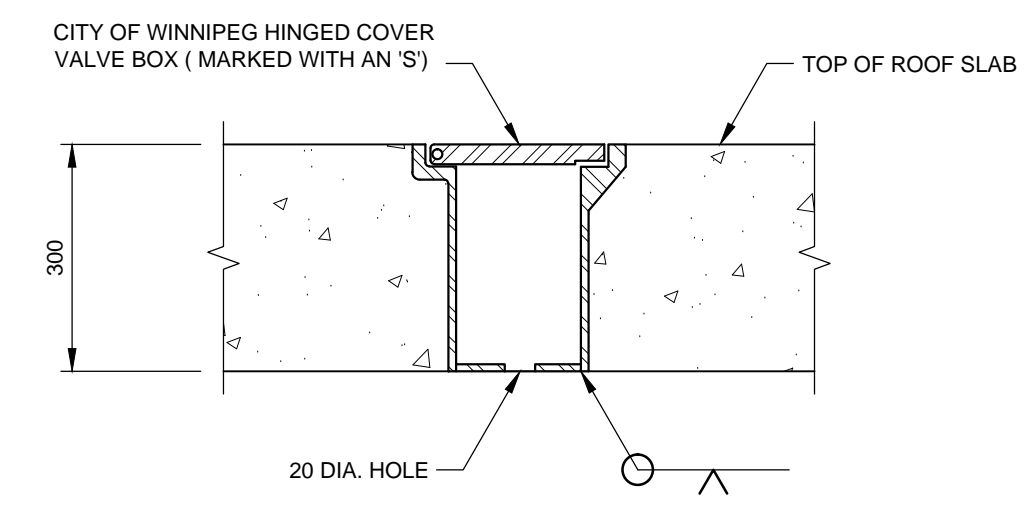
DETAIL 1
1:10



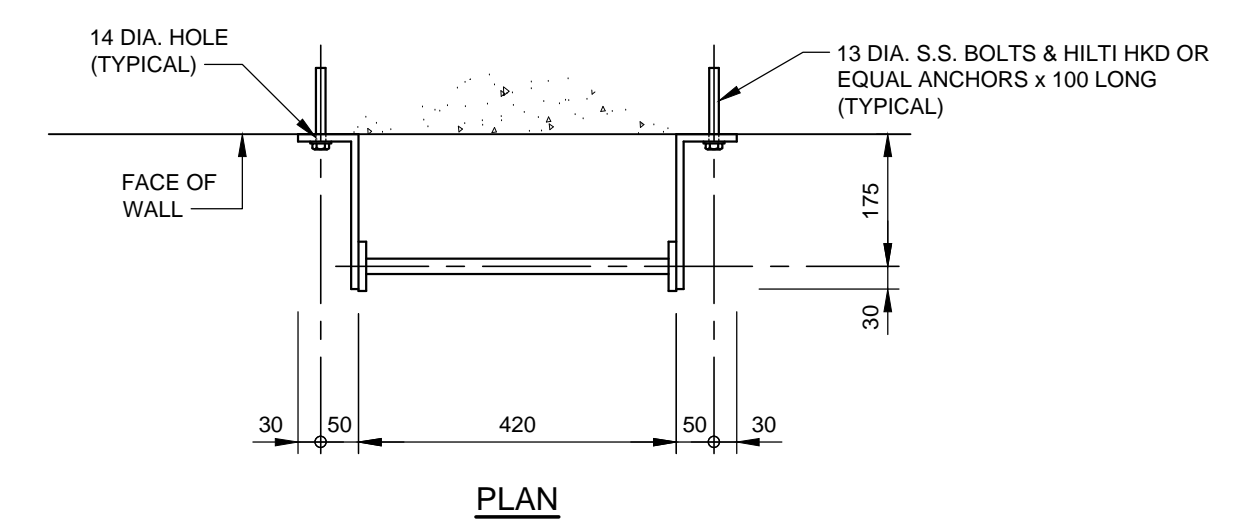
DETAIL 2
1:10



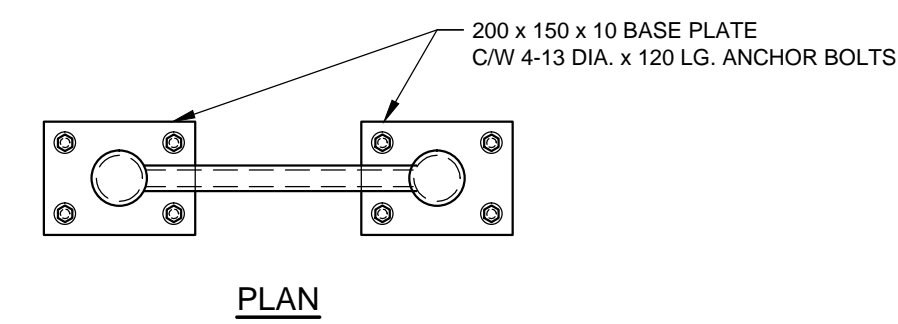
HATCH COVER CHAIN SECTION
1:10



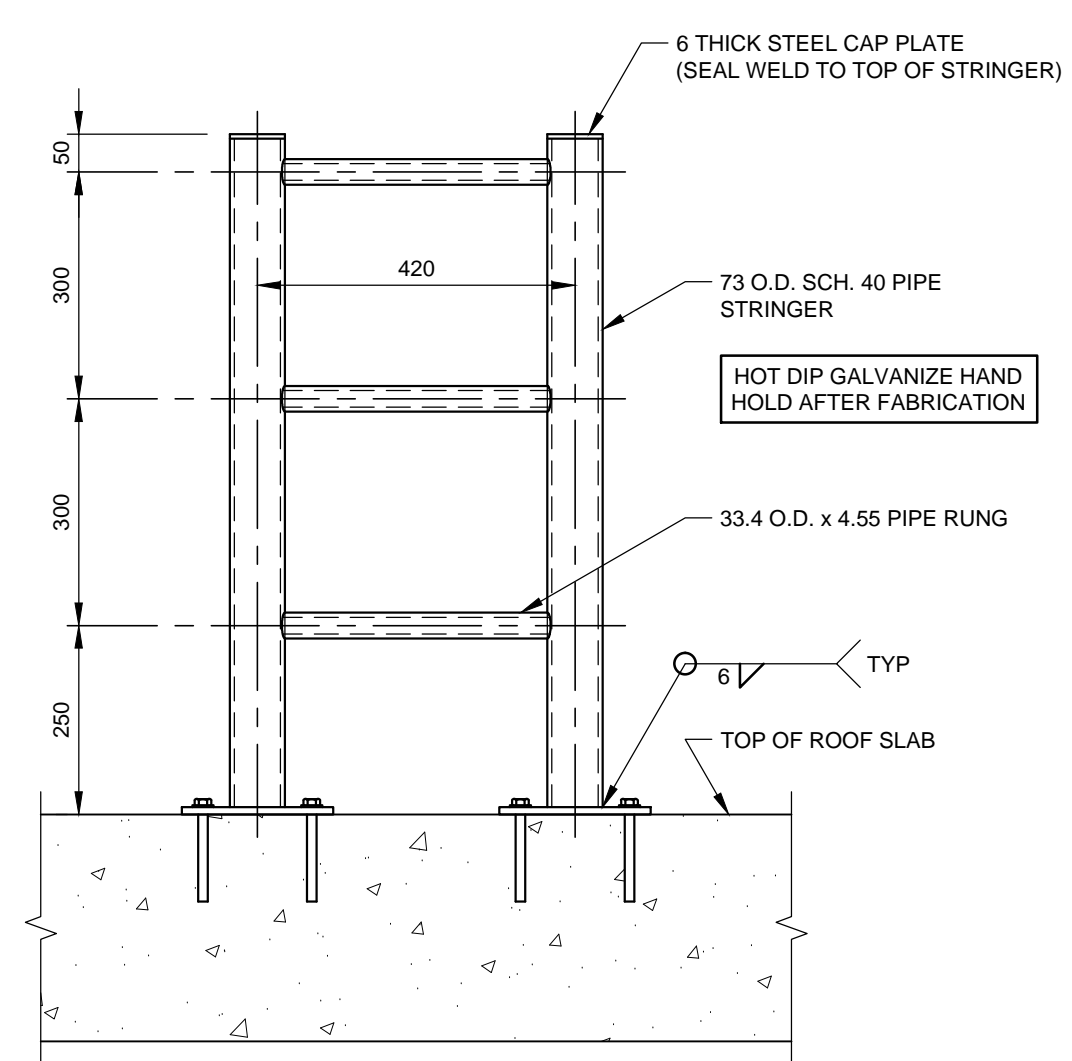
DETAIL 5
1:10



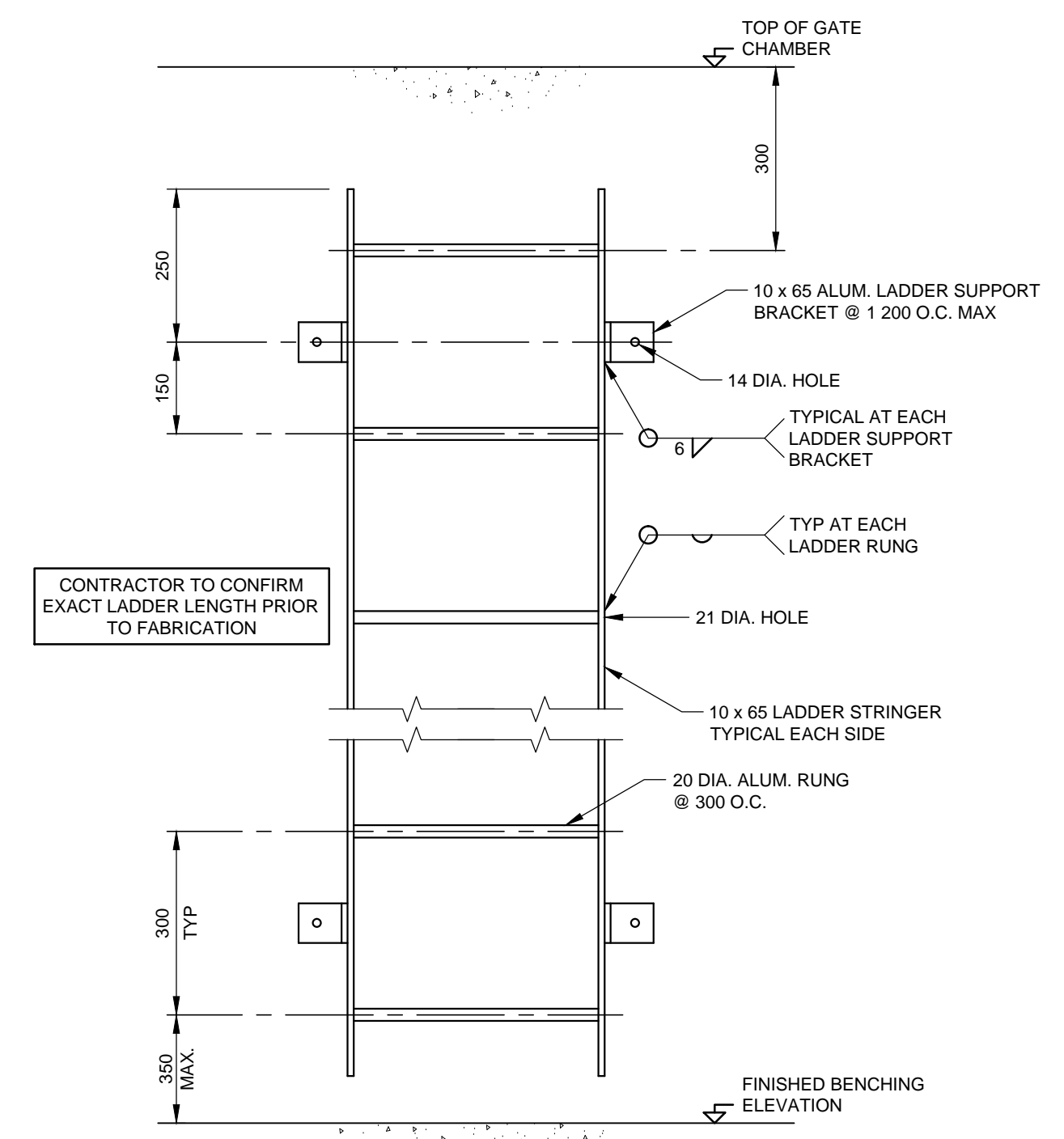
PLAN



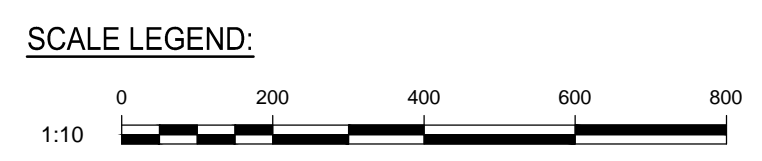
PLAN



HAND HOLD ELEVATION
1:10

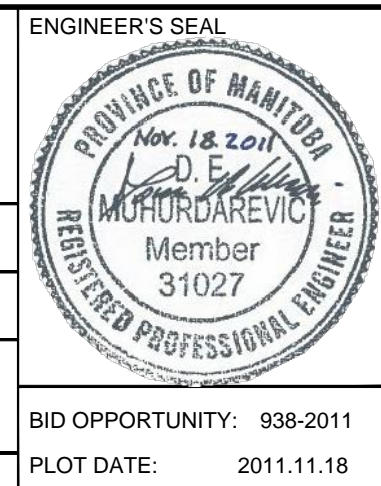


LADDER DETAIL
1:10



METRIC
WHOLE NUMBERS INDICATE MILLIMETRES
DECIMALIZED NUMBERS INDICATE METRES

DESIGNED BY	MM	CHECKED BY	DM/CDP
DRAWN BY	KDB	APPROVED BY	DM
HOR. SCALE	AS NOTED	RELEASED FOR CONSTRUCTION	
VERT. SCALE	AS NOTED		
1 ISSUED FOR TENDER	11.11.18	DM	
No. REVISIONS	DATE	BY	DATE



THE CITY OF WINNIPEG
WASTE AND WATER DEPARTMENT

Winnipeg

OUTFALL GATE CHAMBERS CONSTRUCTION & UPGRADES
MINNETONKA STREET & RIVER ROAD

CONSULTANT DRAWING No.: 5511125-9
SHEET 9 OF 10
CITY DRAWING No.: LD-5715

MISCELLANEOUS DETAILS

BID OPPORTUNITY: 938-2011
PLOT DATE: 2011.11.18

Last saved November 18, 2011 - 11:02 AM by BERNARDK...
P:\5511125-9\5511125-9_Minnetonka Gate Chambers.dwg

NOTE:
These design documents are prepared solely for the use by the party with whom the design professional has entered into a contract and there are no representations of any kind made by the design professional to any party with whom the design professional has not entered into a contract.