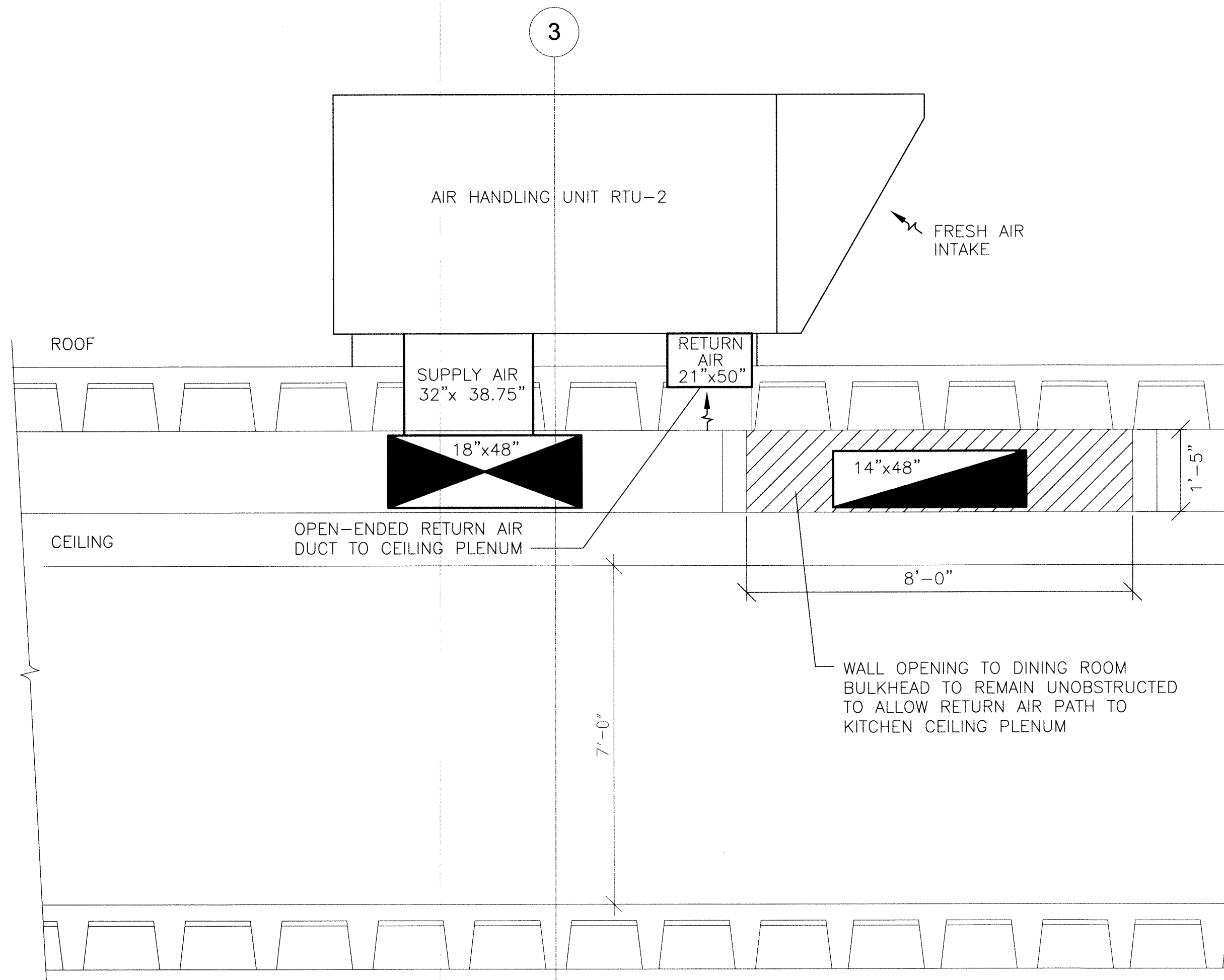
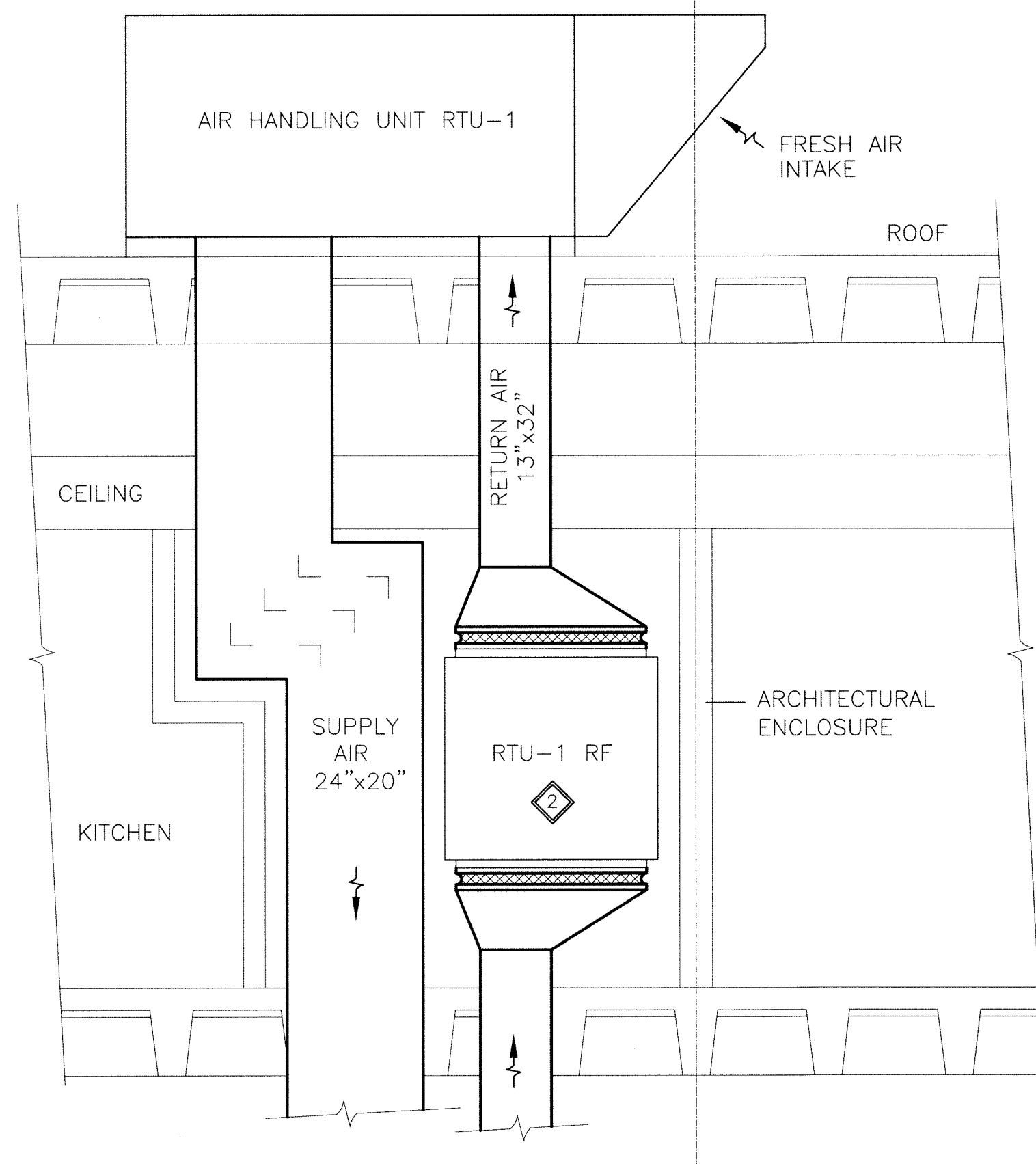


File Name: P:\Projects\2011\11-0902-04 Doc Control\ToBeIssued\DWG\11-0902-04_M12.0-Rev 1.dwg - Tab: 24x36-Plot SCALE: 1/2"=1'-0" (24" X 36")
24x36/Plot SCALE: 1/2"=1'-0" (24" X 36")
Plotted By: Dderochte 12/02/06 [Mon 8:16am]



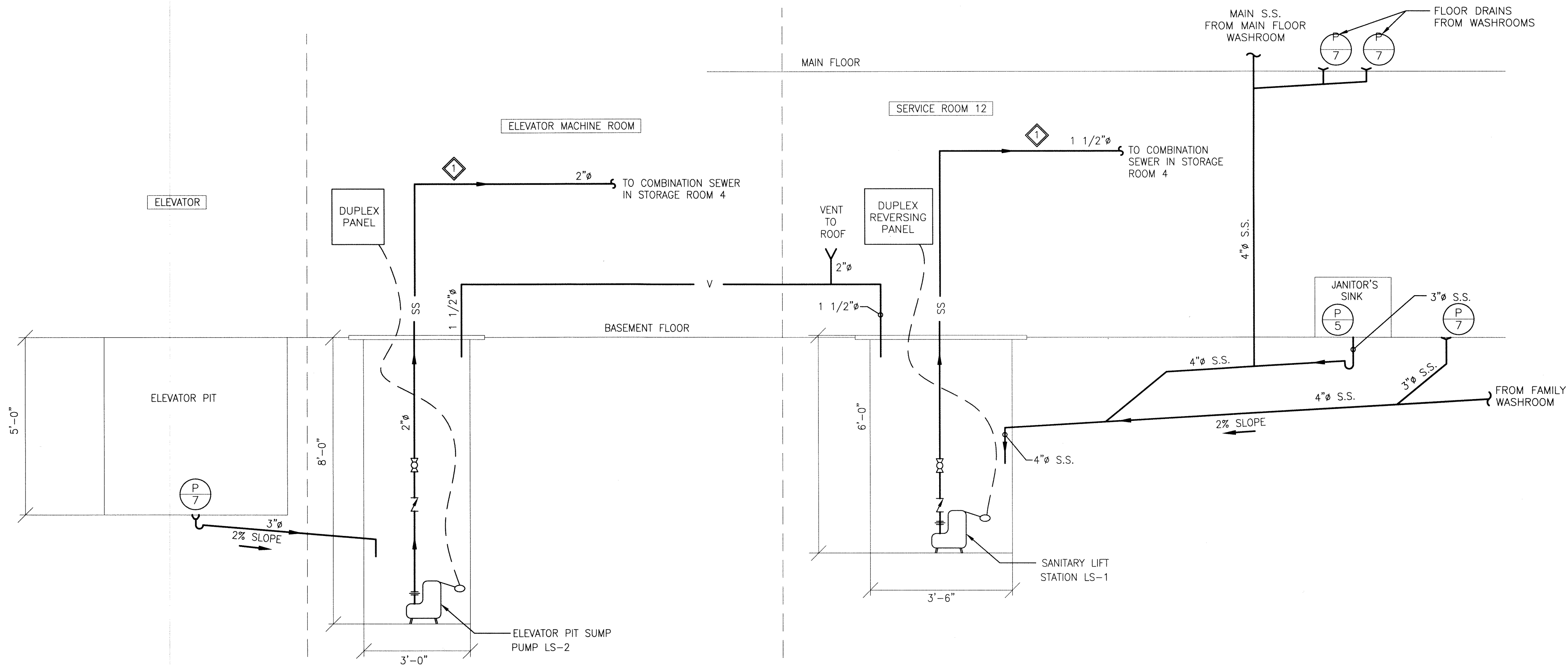
1 SECTION A-A MAIN FLOOR DUCTWORK - RTU-2

SCALE: 1/2"=1'-0" (24" X 36")
N.T.S. (11" X 17")



3 SECTION B-B MAIN FLOOR DUCTWORK - RTU-1

SCALE: 1/2"=1'-0" (24" X 36")
N.T.S. (11" X 17")



2 ELEVATOR AND SANITARY LIFT STATION PIPING DETAIL

SCALE: N.T.S.

KEY NOTES:

- 1 RUN PIPING AS CLOSE AS POSSIBLE TO BASEMENT CEILING AND WALLS. PIPING TO BE CONCEALED BY ARCHITECTURAL ENCLOSURE BY OTHERS. ACCESS DOORS TO BE PROVIDED TO ACCESS CLEANOUTS. CO-ORDINATE ACCESS DOOR LOCATIONS WITH OTHER TRADES.
- 2 SUPPLY AND INSTALL RETURN FAN RTU-1 RF WITH VIBRATION ISOLATOR HANGERS AND FLEXIBLE DUCT CONNECTIONS. INTERLOCK FAN WITH RTU-1. ACCESS DOOR TO FAN SHALL BE PROVIDED WITH ARCHITECTURAL ENCLOSURE (BY OTHERS).

THIS DRAWING MUST NOT BE SCALED.

THE GENERAL CONTRACTOR SHALL VERIFY ALL DIMENSIONS, DATUMS, AND LEVELS PRIOR TO COMMENCEMENT OF WORK. ALL ERRORS AND OMISSIONS TO BE REPORTED TO NUMBER TEN ARCHITECTURAL GROUP BEFORE PROCEEDING.

VARIATIONS AND MODIFICATIONS TO WORK SHOWN ON THESE DRAWINGS SHALL NOT BE CARRIED OUT WITHOUT WRITTEN PERMISSION OF NUMBER TEN ARCHITECTURAL GROUP.

THIS DRAWING IS THE EXCLUSIVE PROPERTY OF NUMBER TEN ARCHITECTURAL GROUP AND THE COPYRIGHT IN THE SAME BEING RESERVED TO THEM. IT MAY BE REPRODUCED ONLY WITH THE PERMISSION OF NUMBER TEN ARCHITECTURAL GROUP, IN WHICH CASE THE REPRODUCTION MUST BEAR THEIR NAME.

REVISED/ ISSUED/ PLOTTED	DATE
Rev. 1 - ISSUED FOR TENDER	FEBRUARY 03/2012
Rev. 0 - ISSUED FOR TENDER	NOVEMBER 21/2011

LEGEND:

SS	SANITARY SEWER
F.D.	FLOOR DRAIN
BD	BALL VALVE
CV	CHECK VALVE
P 5	JANITOR SINK
P 7	FLOOR DRAIN
RTU-1 RF	RETURN FAN FOR ROOFTOP UNIT
BD	BACKDRAFT DAMPER

SCALE VERIFIED BY: *[Signature]*

numberTEN
architectural group

winnipeg MB regina SK victoria BC
204 942.0981 306 721.1501 250 360.2106

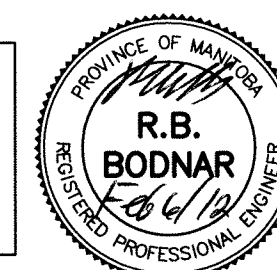
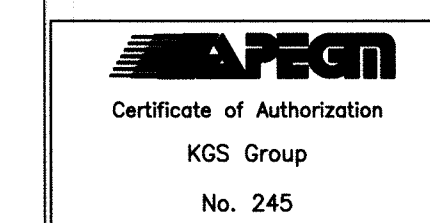
architecture • interior design • graphic design

PEGUIS PAVILION
UPGRADES & ENTRY ADDITION
BIDDING #913-2011

project
MECHANICAL
SECTIONS AND DETAILS
SHEET 1 OF 2

KGS GROUP | CONSULTING
ENGINEERS

consultant



drawn by: VJH
checked by: RBB
project no. 2011026

scale: AS NOTED
date: October 24, 2011
sheet no. M12.0