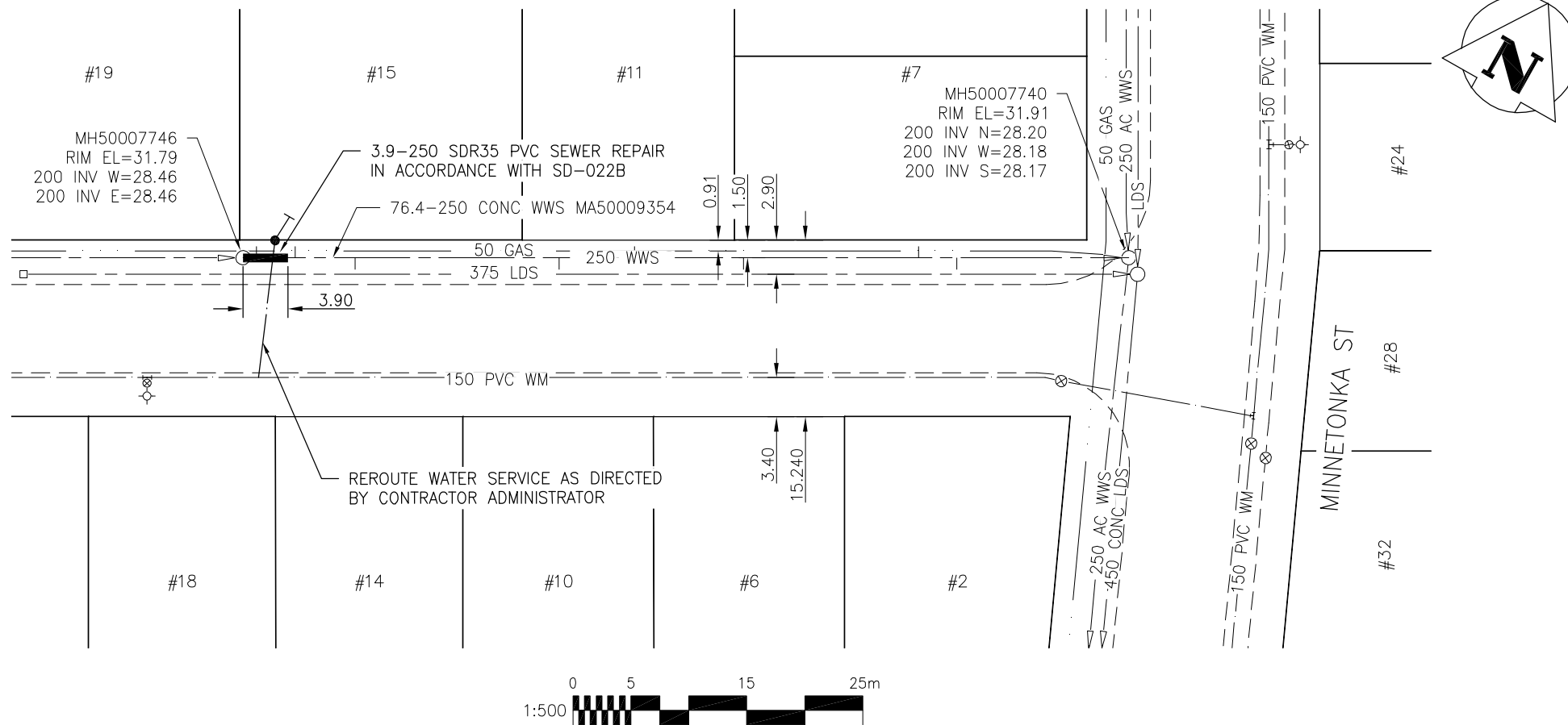


WEEPING WILLOW DRIVE



SEWER JUNCTION INFORMATION
FOR SEWER ID MA50009354
REFERENCE—METERS WEST OF MANHOLE MH50007740

DIST. FROM REF. MH	JUNCTION DIA.	CLOCK REF.	SERVICE TYPE	DESCRIPTION
14.8	150	10	CN	
18.1	150	02	CNI	
33.2	150	10	CN	
42.6	150	01	CNI	
49.1	150	10	CN	
66.7	150	10	CN	
71.9	150	02	CNI	

ALL JUNCTION INFORMATION
BASED ON CCTV INSPECTION

SEWER JUNCTION INFORMATION
FOR SEWER ID MA50009354
REFERENCE—METERS EAST OF MANHOLE MH50007740

DIST. FROM REF. MH	JUNCTION DIA.	CLOCK REF.	SERVICE TYPE	DESCRIPTION
1.2	150	10	CN	CAPPED

ALL JUNCTION INFORMATION
BASED ON CCTV INSPECTION

WATER SERVICE INFORMATION

ADDRESS	SIZE & TYPE STREET	SIZE & TYPE PROPERTY	STOP COCK LOCATION SHORT & LONG	CORP LOCATION FROM STOP COCK	REMARKS
#15 WEEPING WILLOW RESIDENTIAL					NO INFORMATION

METRIC

WHOLE NUMBERS INDICATE MILLIMETRES
DECIMALIZED NUMBERS INDICATE METRES

BENCH MARK: N.E. Cor. Riel Ave. & Minnetonka St., Tbit.
on top of 0.05 m dia. x 2.4 m iron pipe, 3.0 m S. of N.L.
of Riel Ave. & E.L. of Minnetonka St.

APEGM
Certificate of Authorization
Stantec Consulting Ltd.
No. 1301 Date: _____

BID OPPORTUNITY 911-2011

LOCATION APPROVED
UNDERGROUND STRUCTURES

SUPV. U/G STRUCTURES COMMITTEE DATE

NOTE:
LOCATION OF UNDERGROUND STRUCTURES AS SHOWN ARE BASED ON THE BEST INFORMATION AVAILABLE BUT NO GUARANTEE IS GIVEN THAT ALL EXISTING UTILITIES ARE SHOWN OR THAT THE GIVEN LOCATIONS ARE EXACT. CONFIRMATION OF EXISTENCE AND EXACT LOCATION OF ALL SERVICES MUST BE OBTAINED FROM THE INDIVIDUAL UTILITIES BEFORE PROCEEDING WITH CONSTRUCTION.

B.M.	63-22		
ELEV.	232.009m		
NO.	REVISIONS	DATE	BY

Stantec Consulting Ltd.
905 Waverley Street, Winnipeg, Manitoba
Tel 204-489-5900 Fax 204-453-9012

DESIGNED BY	J.C	CHECKED BY	W.A.B.
DRAWN BY	D.L.	APPROVED BY	H.A.K.
HOR. SCALE:	1:500	RELEASED FOR CONSTRUCTION:	
VERTICAL:	N/A	DATE	
NO.	REVISIONS	DATE	BY
		11.09.01	

ENGINEER'S SEAL
CONSULTANT DRAWING NO.
C-147

THE CITY OF WINNIPEG
WATER AND WASTE DEPARTMENT

2011 SEWER RENEWALS
AND EXTERNAL POINT REPAIRS
CONTRACT NO. 18
WEeping WILLOW DRIVE
1ST MH E OF BLUE SPRUCE CR (W LEG) TO
MH AT MINNETONKA ST - 250 WWS POINT REPAIR

SHEET	OF
54	58
CAD FILE DRAWING NUMBER 13090c-147-768.dwg	
CITY DRAWING NUMBER 9761	