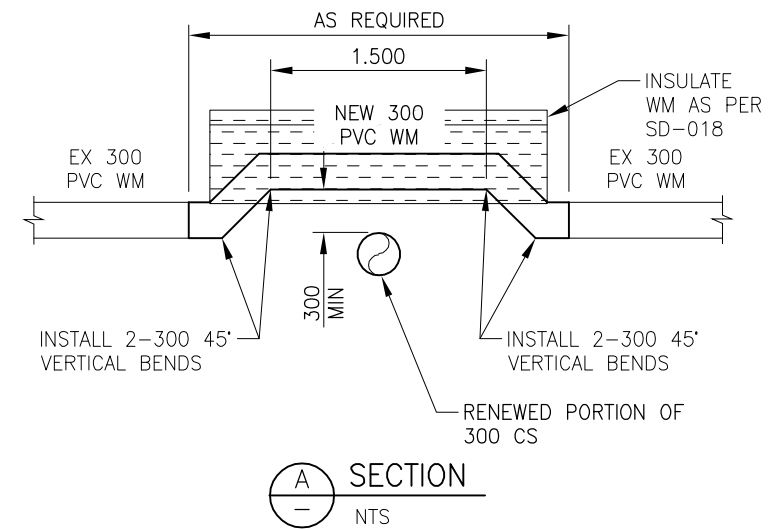
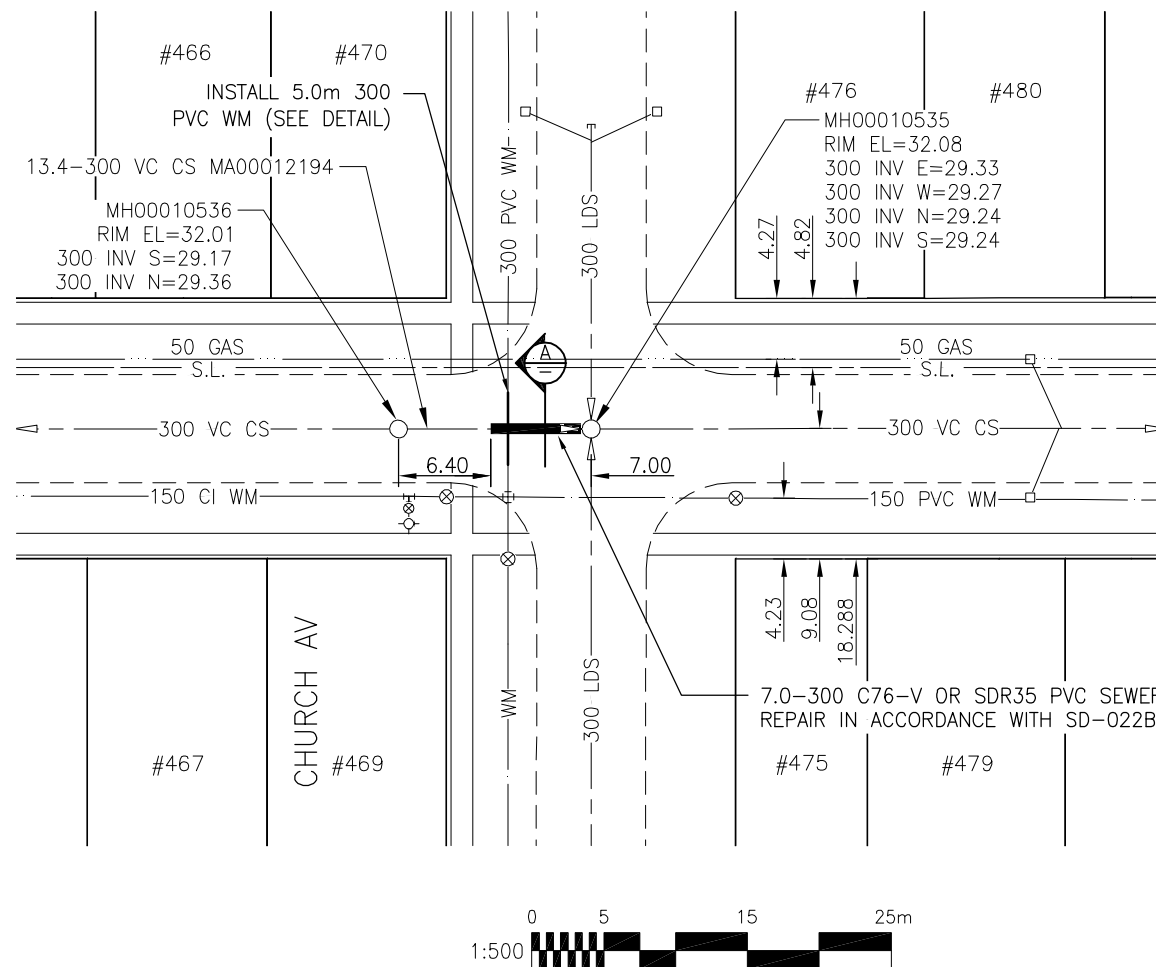
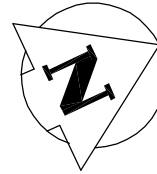


MINNIGAFFE STREET



METRIC

WHOLE NUMBERS INDICATE MILLIMETRES
DECIMALIZED NUMBERS INDICATE METRES

BENCH MARK: N.W. Cor. Church Ave. & Airlies St.,
Brass plug in 4.6 m Conc. pile, 0.3 m N. of N.L. of
Church Ave. & 2.4 m E. of W.L. of Airlies St.



Certificate of Authorization
Stantec Consulting Ltd.
No. 1301 Date: _____

BID OPPORTUNITY 911-2011

LOCATION APPROVED UNDERGROUND STRUCTURES

SUPV. U/G STRUCTURES COMMITTEE DATE

NOTE:
LOCATION OF UNDERGROUND STRUCTURES AS SHOWN ARE BASED ON THE BEST INFORMATION AVAILABLE BUT NO GUARANTEE IS GIVEN THAT ALL EXISTING UTILITIES ARE SHOWN OR THAT THE GIVEN LOCATIONS ARE EXACT. CONFIRMATION OF EXISTENCE AND EXACT LOCATION OF ALL SERVICES MUST BE OBTAINED FROM THE INDIVIDUAL UTILITIES BEFORE PROCEEDING WITH CONSTRUCTION.

B.M.	25-25			
ELEV.	232.070m			
NO.	REVISIONS	DATE	BY	



Stantec Consulting Ltd.

905 Waverley Street, Winnipeg, Manitoba
Tel 204-489-5900 Fax 204-453-9012

DESIGNED BY	J.C.	CHECKED BY	W.A.B.
DRAWN BY	D.L.	APPROVED BY	H.A.K.
HOR. SCALE:	1:500	RELEASED FOR CONSTRUCTION:	
VERTICAL:	N/A	DATE	
NO.	REVISIONS	DATE	BY
		11.09.01	

ENGINEER'S SEAL

CONSULTANT DRAWING NO.
C-127



**THE CITY OF WINNIPEG
WATER AND WASTE DEPARTMENT**

2011 SEWER RENEWALS
AND EXTERNAL POINT REPAIRS
CONTRACT NO. 18

MINNIGAFFE STREET
MH AT CHURCH AV (S OF CL) TO MH AT CHURCH AV (CL)
300 CS POINT REPAIR

SHEET	OF
34	58
CAD FILE DRAWING NUMBER 13090c-127-768.dwg	
CITY DRAWING NUMBER 9742	

V:\1112\active\111213090\drawing\402_design\sheet_files\13090c-127-768-Minnigaffe.dwg
2011 December 07, 9:17 a.m.