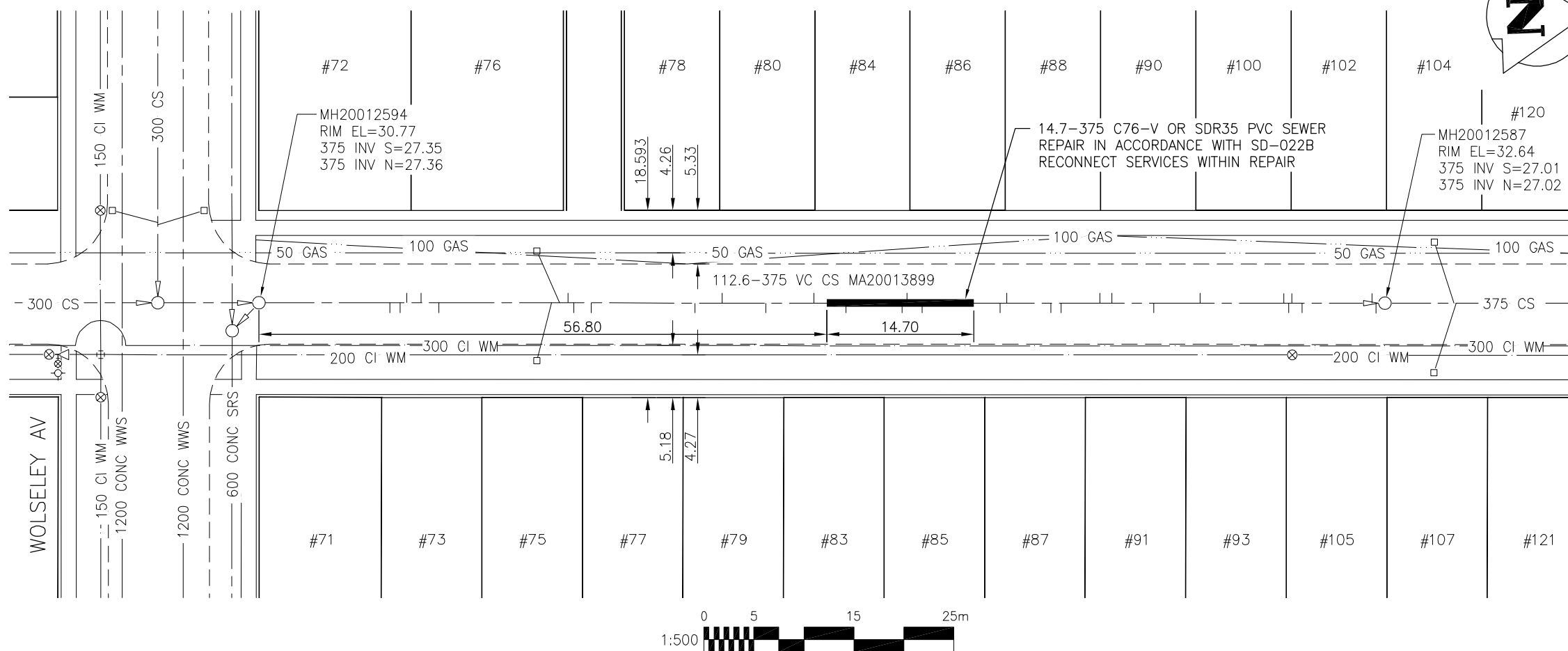
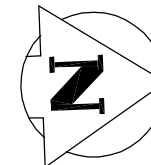


# ARLINGTON STREET



SEWER JUNCTION INFORMATION  
FOR SEWER ID MA20013899  
REFERENCE—METERS NORTH OF MANHOLE MH20012594

DIST. FROM REF. MH	JUNCTION DIA.	CLOCK REF.	SERVICE TYPE	DESCRIPTION
13.1	150	02	CI	LIVE
14.1	150	02	JN	CAPPED
14.8	150	11	JN	CAPPED
16.2	150	10	CXI	
18.0	150	03	CNI	
29.3	150	01	CN	
30.1	100	11	JX	
30.9	150	11	JN	CAPPED
31.5	150	02	JN	CAPPED
33.2	150	02	CXI	
43.6	100	02	JN	CAPPED
46.3	100	11	JX	
50.7	100	01	JN	
55.5	100	11	JN	
58.7	150	01	JX	CAPPED
64.3	150	02	CNI	LIVE
64.8	100	11	JX	
66.3	100	01	JX	CAPPED
74.1	100	01	JN	CAPPED
74.8	100	11	JN	
79.2	150	02	CNI	
80.2	100	02	JN	CAPPED
84.1	100	11	JN	CAPPED
85.3	100	11	CXI	
89.5	100	01	JN	CAPPED
94.1	100	11	JN	
97.1	100	02	JN	CAPPED
102.5	100	11	CNI	
103.0	100	02	CNI	
103.3	100	10	JX	
104.3	100	02	JN	CAPPED
111.3	150	11	CXI	
111.7	150	01	CXI	

ALL JUNCTION INFORMATION  
BASED ON CCTV INSPECTION

BID OPPORTUNITY 911-2011

## METRIC

WHOLE NUMBERS INDICATE MILLIMETRES  
DECIMALIZED NUMBERS INDICATE METRES

BENCH MARK: S.E. Cor. Wolseley Ave. & Palmerston Ave., Tbt. on top of 0.05 m dia. x 2.4 m iron pipe, 2.5 m W. of E.L. Palmerston Ave. & on S.L. of Wolseley Ave.



Certificate of Authorization  
Stantec Consulting Ltd.  
No. 1301 Date: \_\_\_\_\_

LOCATION APPROVED  
UNDERGROUND STRUCTURES

SUPV. U/G STRUCTURES COMMITTEE DATE

NOTE:  
LOCATION OF UNDERGROUND STRUCTURES AS SHOWN ARE BASED ON THE BEST INFORMATION AVAILABLE BUT NO GUARANTEE IS GIVEN THAT ALL EXISTING UTILITIES ARE SHOWN OR THAT THE GIVEN LOCATIONS ARE EXACT. CONFIRMATION OF EXISTENCE AND EXACT LOCATION OF ALL SERVICES MUST BE OBTAINED FROM THE INDIVIDUAL UTILITIES BEFORE PROCEEDING WITH CONSTRUCTION.

B.M. ELEV.	37-103 230.733m		
NO.	REVISIONS	DATE	BY



**Stantec Consulting Ltd.**

905 Waverley Street, Winnipeg, Manitoba  
Tel 204-489-5900 Fax 204-453-9012

DESIGNED BY	J.C.	CHECKED BY	W.A.B.
DRAWN BY	D.L.	APPROVED BY	H.A.K.
HOR. SCALE:	1:500	RELEASED FOR CONSTRUCTION:	
VERTICAL:	N/A	DATE	
NO.	REVISIONS	DATE	BY
		11.09.01	

ENGINEER'S SEAL

CONSULTANT DRAWING NO.  
C-102



**THE CITY OF WINNIPEG**  
**WATER AND WASTE DEPARTMENT**

2011 SEWER RENEWALS  
AND EXTERNAL POINT REPAIRS  
CONTRACT NO. 18

ARLINGTON STREET  
1ST MH N OF WOLSELEY AV (N PL) TO 1ST MH S OF  
WESTMINSTER AV - 375 CS POINT REPAIR

SHEET	OF
9	58
CAD FILE DRAWING NUMBER 13090c-102-768.dwg	
CITY DRAWING NUMBER 9719	

V:\1112\active\111213090\drawing\402\_design\sheet\_files\13090c-102-768-Arlington.dwg  
2011 December 07, 9:10 a.m.