

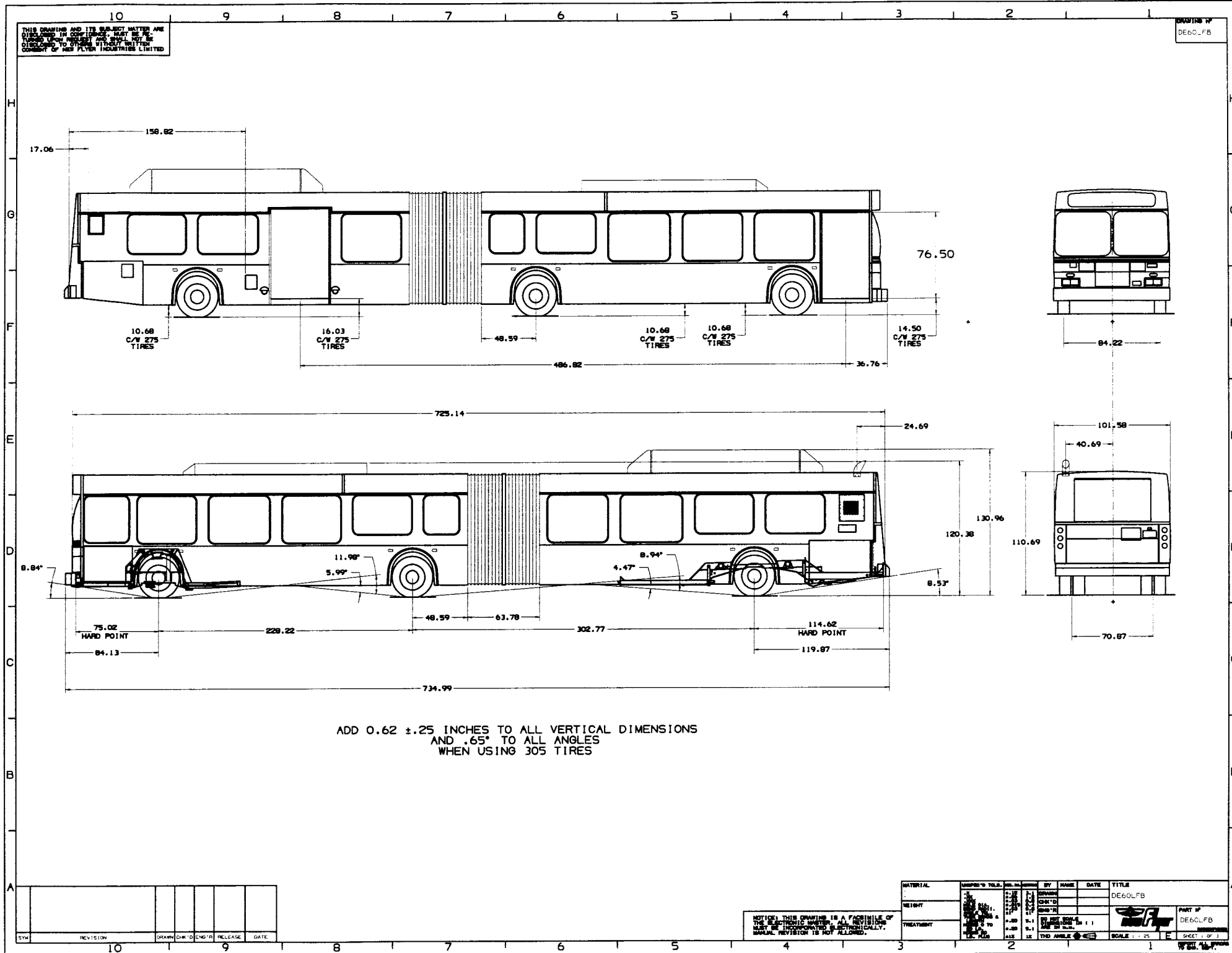
---

**Appendix F(R1) – Typical Bus Dimensions**

---

THIS DRAWING AND ITS SUBJECT MATTER ARE  
 DRAWING IN CONFIDENCE. THEY ARE  
 TO BE KEPT UNDER LOCK AND KEY AND NOT BE  
 DISCLOSED TO OTHERS WITHOUT WRITTEN  
 CONSENT OF REE FLYER INDUSTRIES LIMITED

DRAWING NO  
 DE60LFB



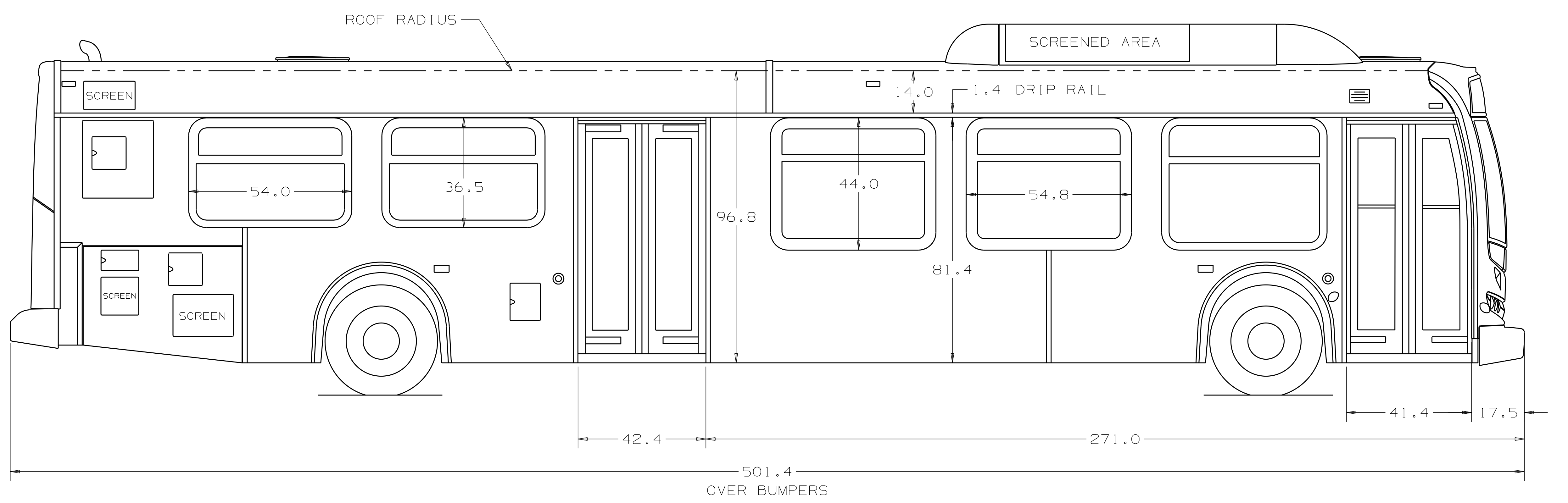
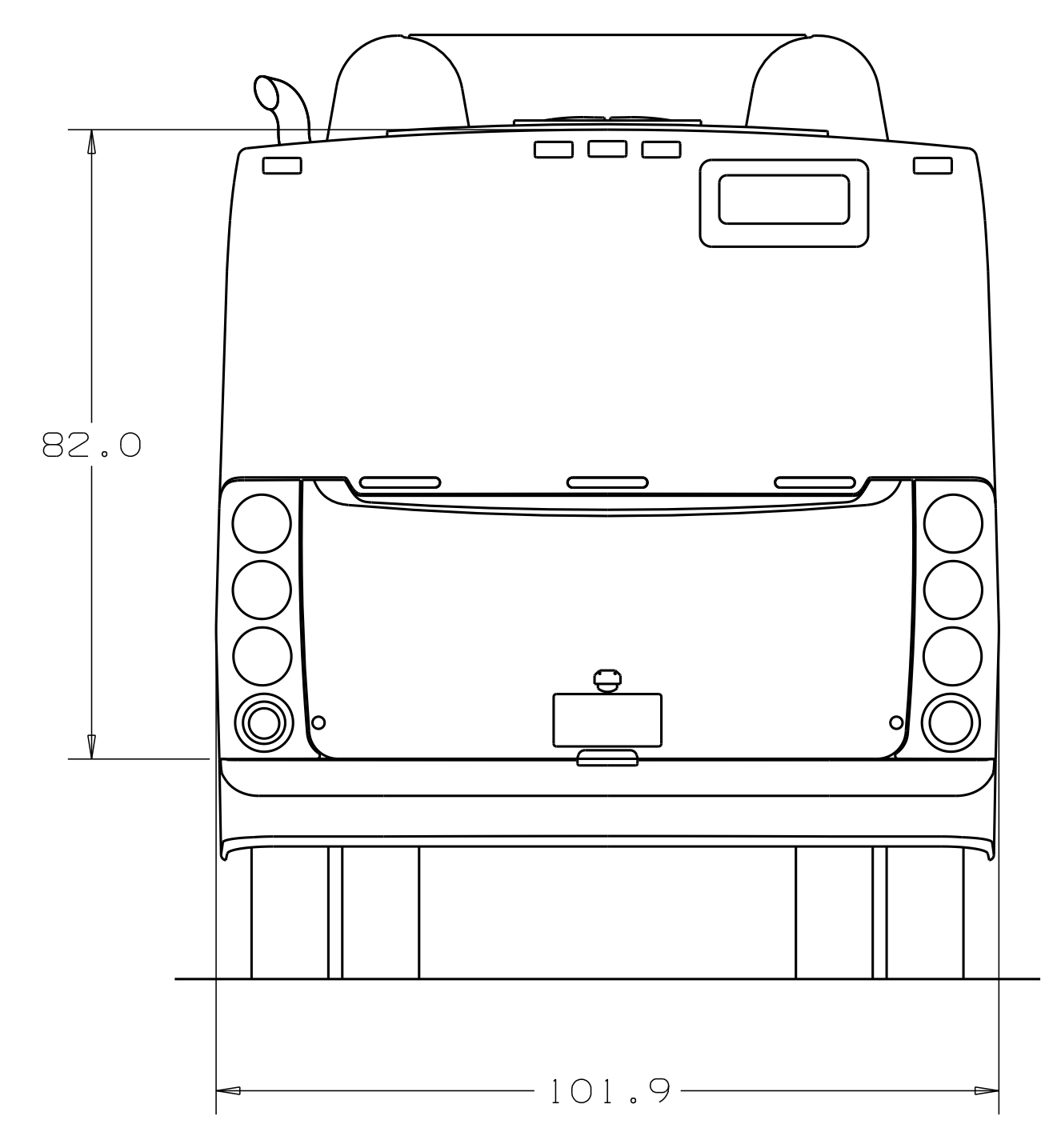
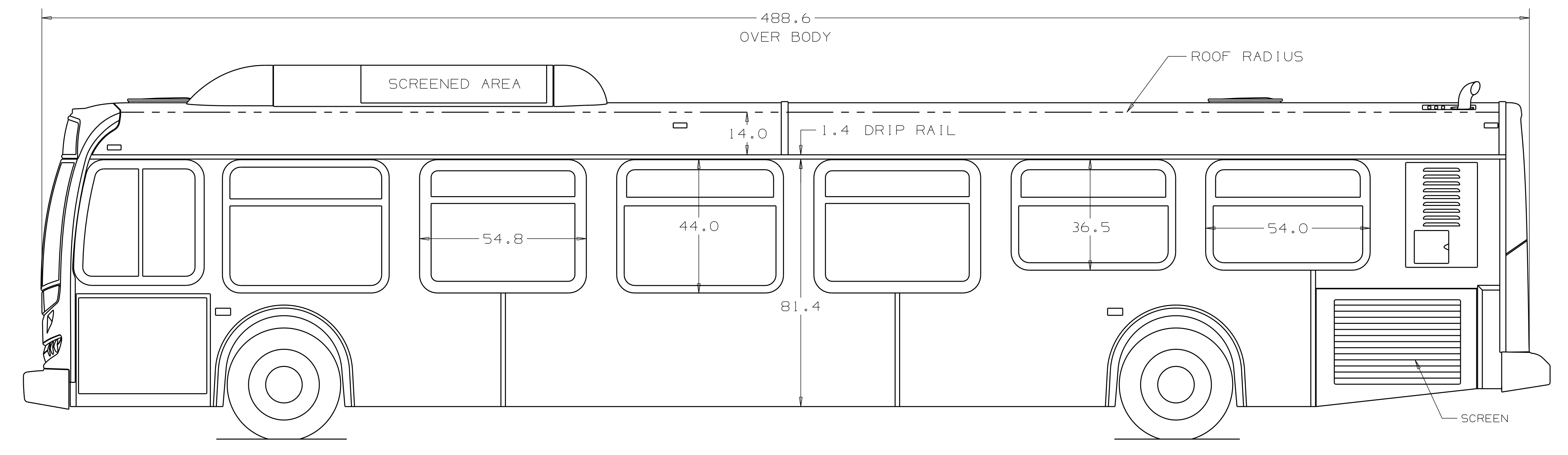
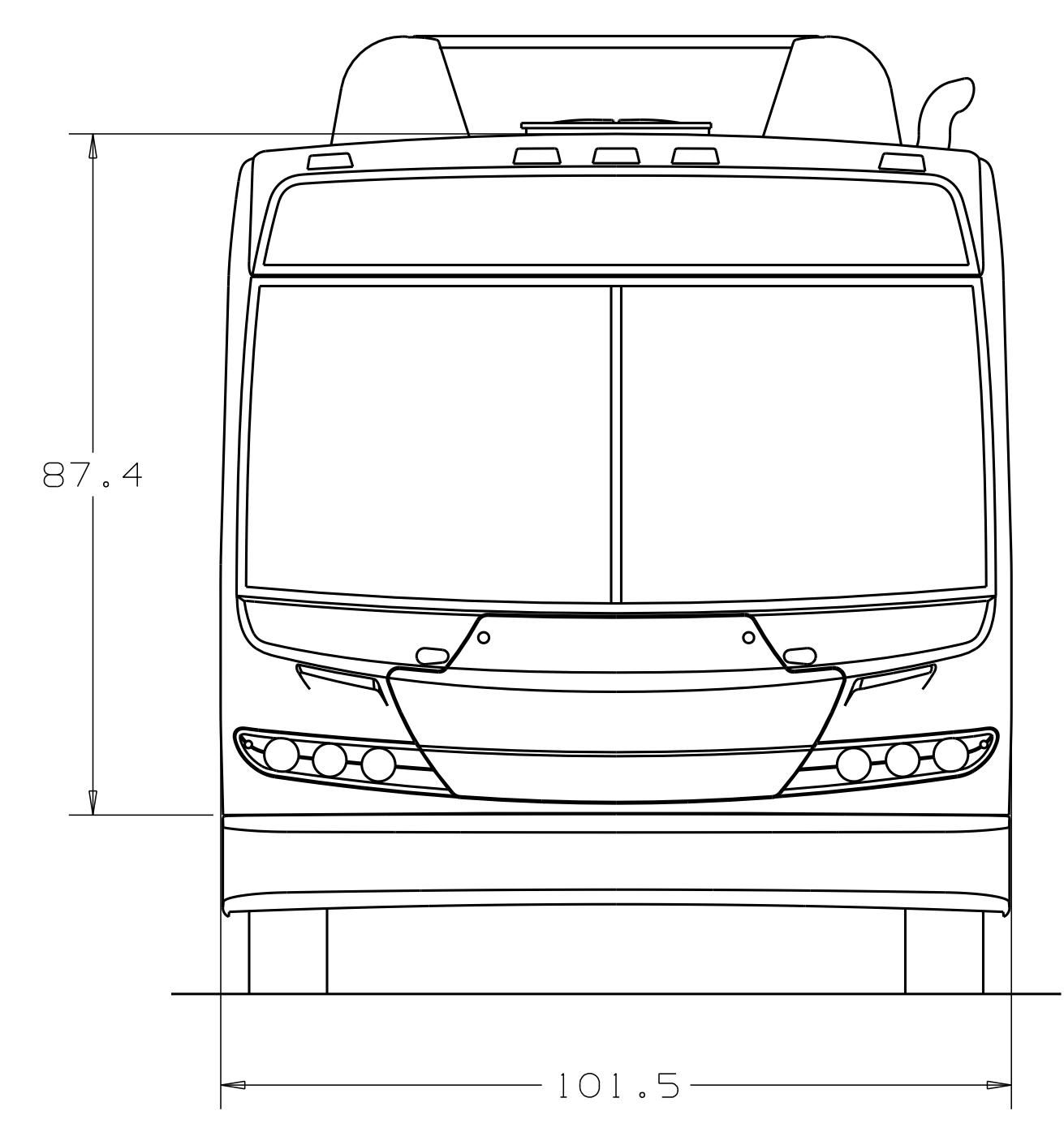
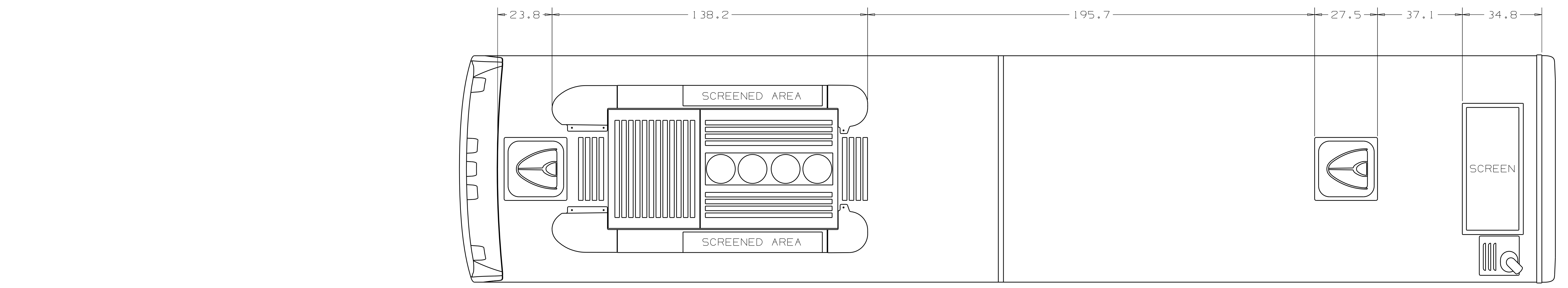
ADD 0.62 ±.25 INCHES TO ALL VERTICAL DIMENSIONS  
 AND .65° TO ALL ANGLES  
 WHEN USING 305 TIRES

SYN	REVISION	DRAWN	CHK'D	END'D	RELEASE	DATE

NOTICE: THIS DRAWING IS A FACSIMILE OF  
 THE ELECTRONIC MASTER. ALL REVISIONS  
 MUST BE INCORPORATED ELECTRONICALLY.  
 MANUAL REVISION IS NOT ALLOWED.

MATERIAL	QUANTITY	BY	NAME	DATE	TITLE
					DE60LFB
					PART NO
					DE60LFB
					SCALE: 1:25
					SHEET 1 OF 1

THE INFORMATION CONTAINED IN THIS DRAWING IS PROPRIETARY TO NEW FLYER INDUSTRIES CANADA ULC OR ITS AFFILIATES ("NEW FLYER"). THIS DRAWING AND ALL MATERIAL DELIVERED WITH IT MUST BE RETURNED UPON REQUEST, AND SHALL NOT BE DISCLOSED TO THIRD PARTIES WITHOUT THE PRIOR WRITTEN CONSENT OF NEW FLYER. ONE OR MORE PATENTS MAY BE PENDING FOR THE PRODUCTS DEPICTED HEREIN. (C) 2010 NEW FLYER INDUSTRIES CANADA ULC. ALL RIGHTS RESERVED.



5

4

3

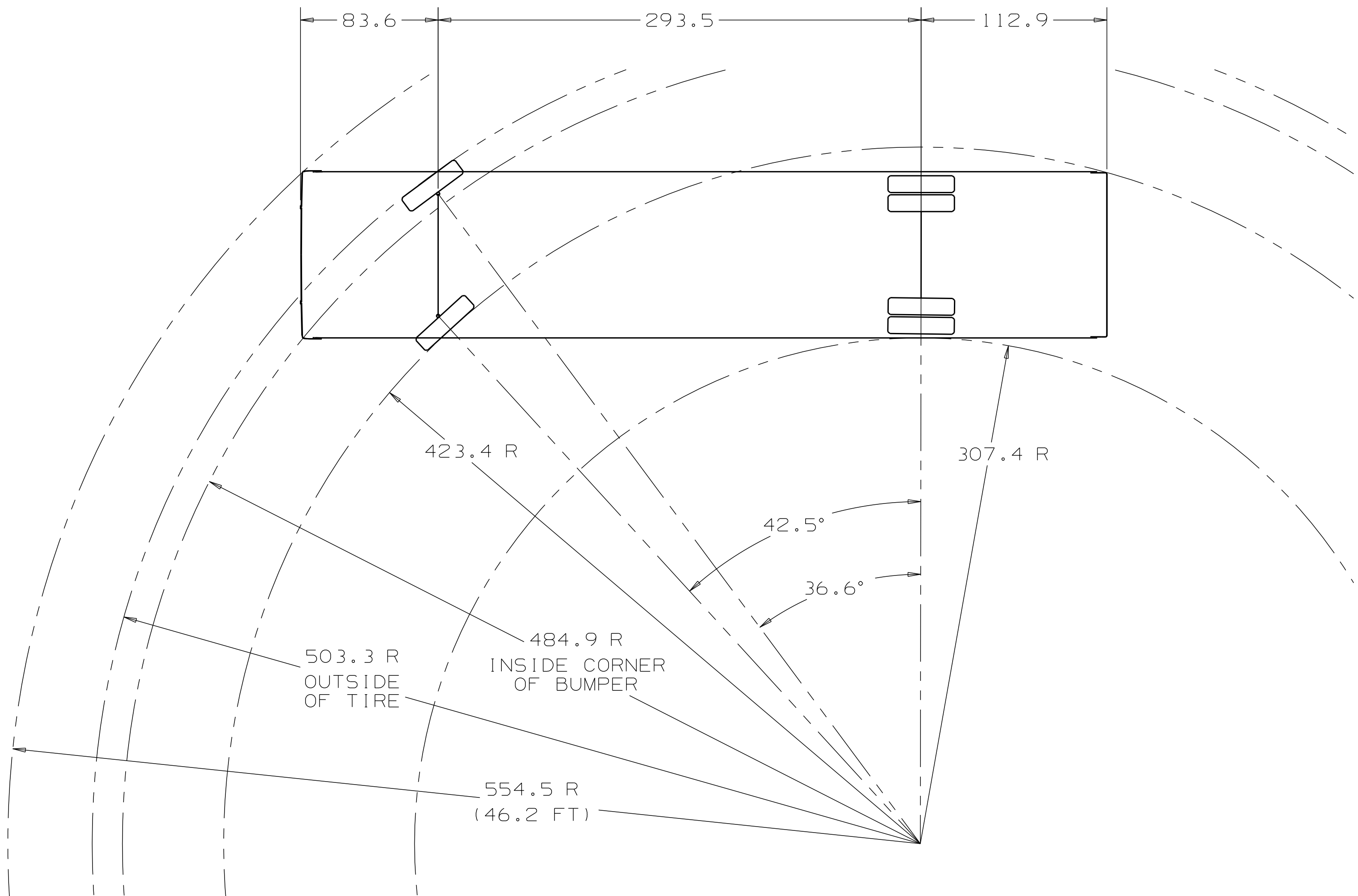
2

1

THIS DRAWING AND ITS SUBJECT MATTER ARE DISCLOSED IN CONFIDENCE. MUST BE RETURNED UPON REQUEST AND SHALL NOT BE DISCLOSED TO OTHERS WITHOUT WRITTEN CONSENT OF NEW FLYER INDUSTRIES INC.

NOTE: FOR INSTALLATION DRAWINGS PLEASE REFER TO ATTACHED MRP BOM SHEET FOR PARTS LISTING

NOTICE: THIS DRAWING IS A FACSIMILE OF THE ELECTRONIC MASTER. ALL REVISIONS MUST BE INCORPORATED ELECTRONICALLY. MANUAL REVISION IS NOT ALLOWED.



COACH: 41 LF WITH STEEL WHEELS  
305 TIRES  
MAN AXLE

MAX CURB-TO-CURB TURNING RADIUS = 41.9 FT  
MAX TURNING RADIUS = 46.2 FT

DO NOT SCALE DRAWING		
DIMENSIONS IN ( ) ARE IN m.m.		
THD ANGLE		
BY	NAME	DD-MMM-YY
DRAWN	C.G.D.	08-JAN-09
CHK'D		
APP'D		

MATERIAL	UNSPEC'D TOLS.	DEC. IN.	TITLE
-	.X .XX .XXX	±.12 ±.06 ±.03	TURNING 40LF ST
WEIGHT	HOLE DIA. BEND RADII	±.015 ±.03	
-	ANGLE TOL.	±1°	
TREATMENT	SIMILAR TO	-	PART N°
-	-	-	TURNING 40LF ST
			SCALE 1:50

NEW FLYER		PART N°	
		TURNING 40LF ST	
		(UNIGRAPHICS)	
SHEET 1 OF 1		REPORT ALL ERRORS TO ENG. DEPT.	

5

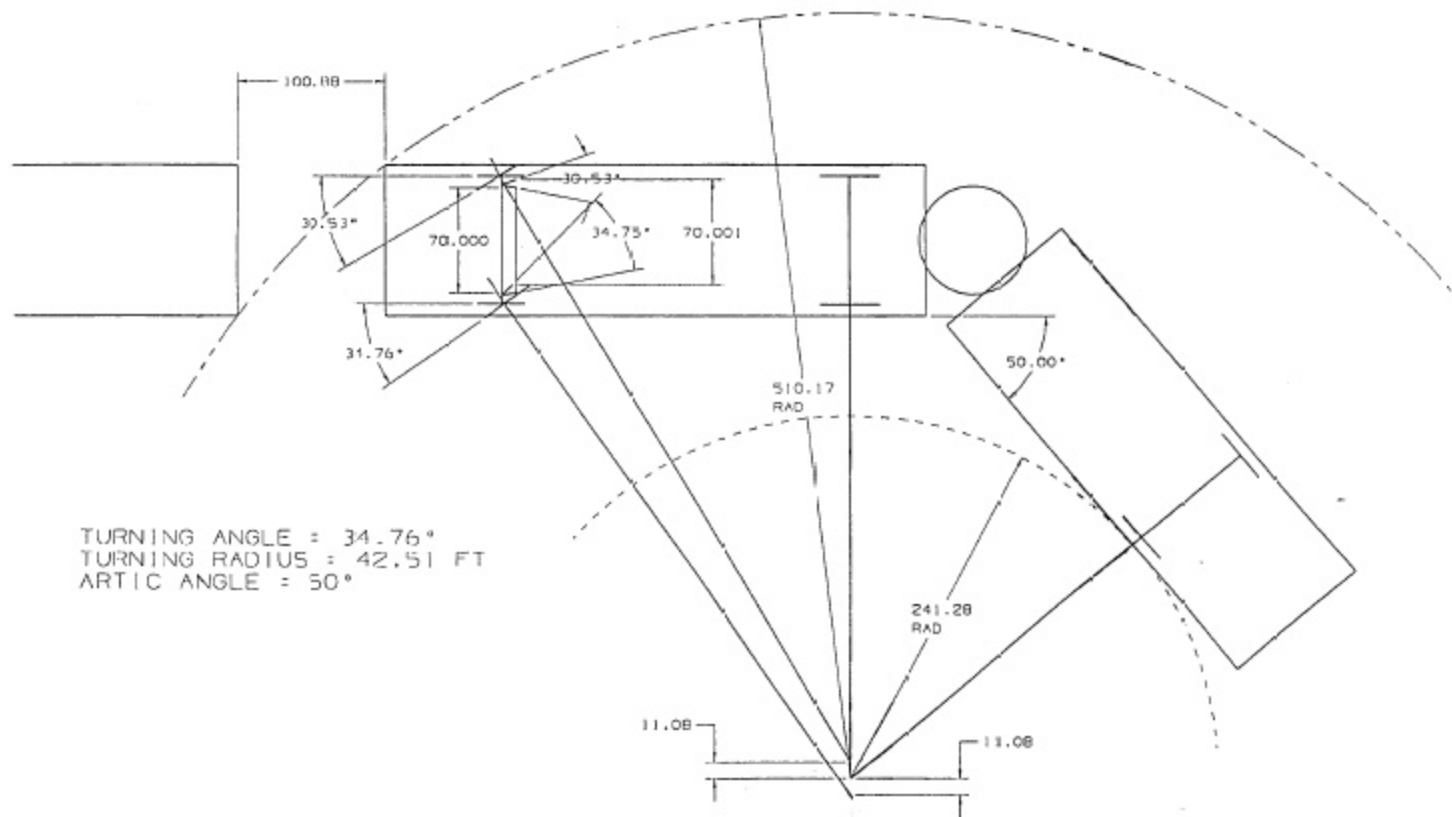
4

3

2

1

# 60 FT LOW FLOOR ARTIC



TURNING ANGLE =  $34.76^\circ$   
 TURNING RADIUS =  $42.51 \text{ FT}$   
 ARTIC ANGLE =  $50^\circ$