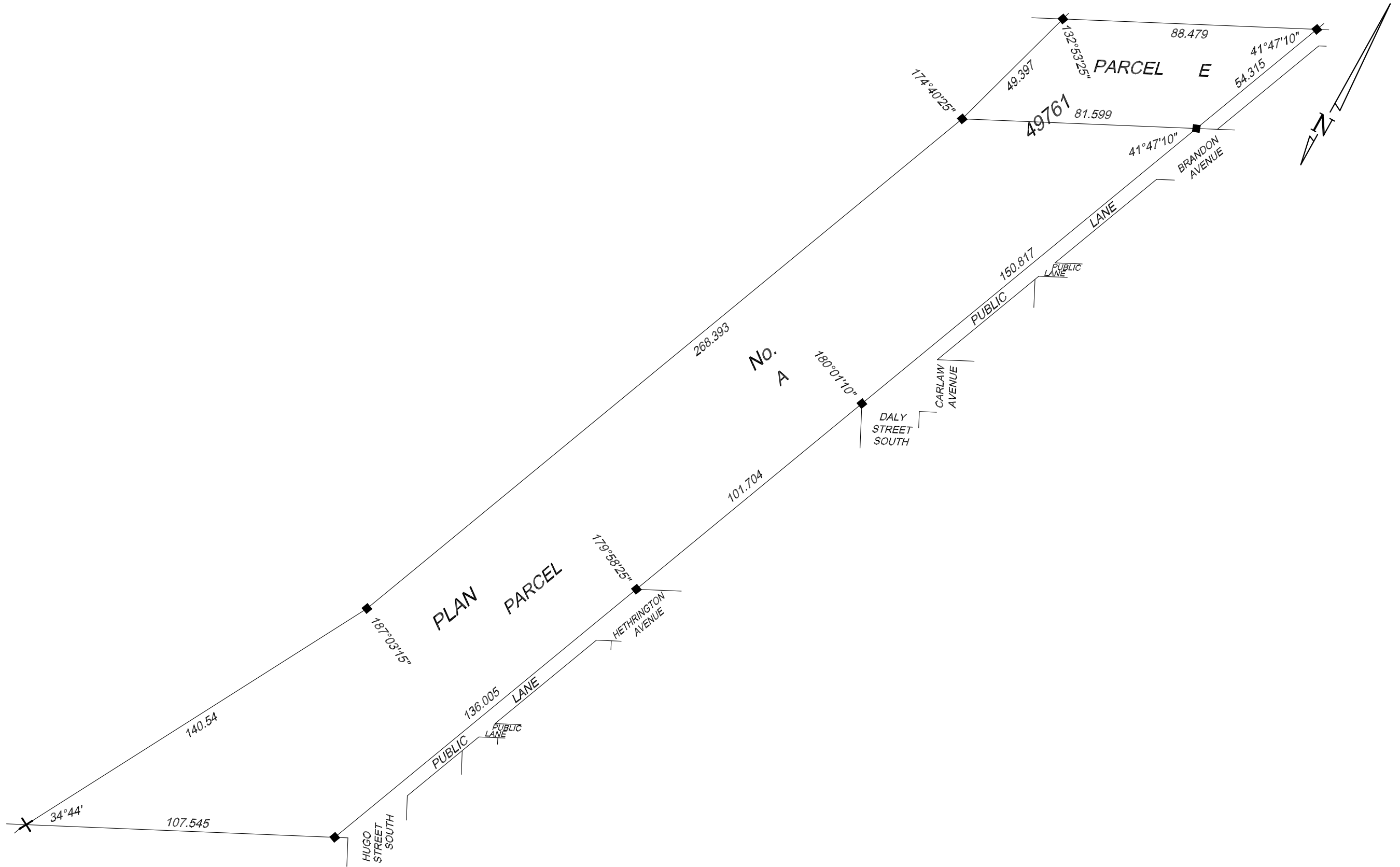

Appendix A – Legal Plan

METRIC



- Albert G. Degner**
M.L.S., C.L.S.
- Leslie McLaughlin**
M.L.S., C.L.S.
- Donald N. Bourgeois**
M.L.S., C.L.S.
- Jim G. Watling**
P.Eng., BSc., S.E., M.L.S., C.L.S.
- K.M. (Ken) Yerex**
M.L.S., C.L.S., BSc.
- James E. Bailie**
M.L.S.
- L.O. (Laurie) LeClair**
M.L.S.
- Andre Van De Walle**
M.L.S.
- Vincent B.D. Sward**
M.L.S.

Pollock & Wright
Land Surveyors, 2011.
All rights reserved.
No person may copy, reproduce,
transmit, or alter this document and
no person may distribute or store
copies of this document, in whole
or in part.

OUR FILE NO.: 1109407
DATE: October 27th, 2011
SURVEYED FOR: Dillon Consulting
SKETCH NO: 451D/11
B. 1724, pg. 50/51
SCALE: Not to Scale

NOTES:
IRON POSTS SHOWN THUS..... ■
CUT CROSS SHOWN THUS..... X
DRAWING NAME: \\DWGSERVER\DRAWINGS\AL\DRAWINGS\IRAPIDTRANSIT.DWG

SURVEYOR'S SKETCH
SHOWING CERTAIN SURVEY MONUMENTS
ON PARCELS A AND E PLAN 49761WLTO
IN RL 25, 26 AND 27
PARISH OF ST BONIFACE

A.G. DEGNER, M.L.S., C.L.S.

Pollock & Wright
LAND SURVEYING • GEOMATICS
117 Fort Street, Winnipeg, MB R3C 1C6
T: (204) 947-1557 F: (204) 943-8024
Toll Free: 1-800-563-8656
Wednesday: 9 am - 5 pm
Civic Centre, Rm 305, Winkler, MB R6W 4B7
T: (204) 325-4615

