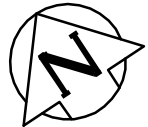
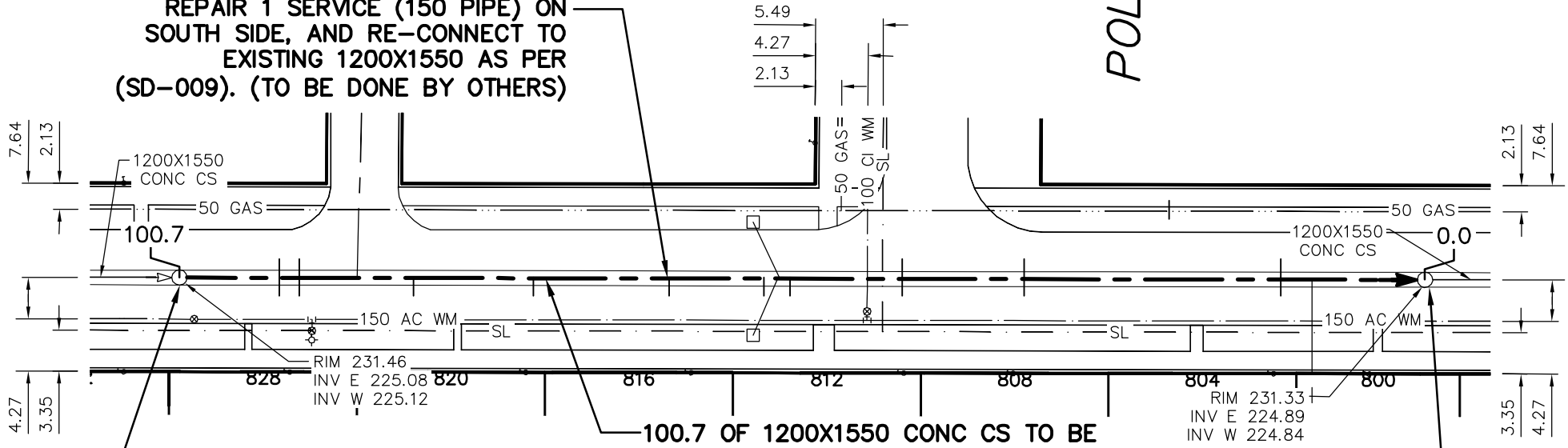


POLSON AVENUE



REPAIR 1 SERVICE (150 PIPE) ON SOUTH SIDE, AND RE-CONNECT TO EXISTING 1200X1550 AS PER (SD-009). (TO BE DONE BY OTHERS)



MH ID S-MH00009139
MH OPENING - 521Ø
MH RISERS - 750Ø
MH BASE - 1200Ø

100.7 OF 1200X1550 CONC CS TO BE LINED SEWER ID S-MA00012426. PARTIALLY DETERIORATED, OVALITY: 3%.

MH ID S-MH70027346
MH OPENING - 521Ø
MH RISERS - 750Ø
MH BASE - 1200Ø

SEWER JUNCTION INFORMATION FROM SEWER VIDEO INSPECTION				
SEWER ID S-MA00012426				
DISTANCE FROM MH ID S-MH00009139				
DISTANCE	DIRECTION	DIAMETER	CLOCK	CODE
8.1	NORTH	200	11	JN
8.1	SOUTH	200	1	JN
9.7	NORTH	200	11	JN
9.7	SOUTH	200	1	JN
14.4	NORTH	200	11	JN
19.0	SOUTH	200	1	JN
28.7	SOUTH	200	1	JN
39.7	SOUTH	200	1	JN
47.4	NORTH	200	12	JN
49.5	NORTH	200	12	JN

SEWER JUNCTION INFORMATION FROM SEWER VIDEO INSPECTION				
SEWER ID S-MA00012426				
DISTANCE FROM MH ID S-MH00009139				
DISTANCE	DIRECTION	DIAMETER	CLOCK	CODE
58.6	NORTH	200	11	JN
58.6	SOUTH	200	1	JN
68.5	SOUTH	200	1	JN
68.5	NORTH	200	11	JN
78.7	SOUTH	200	1	JN
78.7	NORTH	200	11	JN
89.3	SOUTH	200	1	JN
89.3	NORTH	200	11	JN

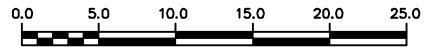
WARNING

IF POWER EQUIPMENT OR EXPLOSIVES ARE TO BE USED FOR EXCAVATION ON THIS PROJECT THE CONTRACTOR MUST:

- 1) NOTIFY THE GAS COMPANY OF THE PROPOSED LOCATION OF EXCAVATION.
- 2) TAKE PRECAUTION TO AVOID DAMAGE TO GAS COMPANY INSTALLATIONS.

SEE PROVINCIAL REGULATION 210/72 FOR DETAILS

METRIC
 WHOLE NUMBERS INDICATE MILLIMETRES
 DECIMALIZED NUMBERS INDICATE METRES



LOCATION APPROVED UNDERGROUND STRUCTURES SUPV. U/G STRUCTURES COMMITTEE _____ DATE _____ NOTE: LOCATION OF UNDERGROUND STRUCTURES AS SHOWN ARE BASED ON THE BEST INFORMATION AVAILABLE BUT NO GUARANTEE IS GIVEN THAT ALL EXISTING UTILITIES ARE SHOWN OR THAT THE GIVEN LOCATIONS ARE EXACT. CONFIRMATION OF EXISTENCE AND EXACT LOCATION OF ALL SERVICES MUST BE OBTAINED FROM THE INDIVIDUAL UTILITIES BEFORE PROCEEDING WITH CONSTRUCTION.	B.M. ELEV. CONSTRUCTION COMPLETION DATE: YYYY MM DD <table border="1" style="width: 100%; height: 40px;"> <tr><td> </td><td> </td><td> </td><td> </td></tr> </table>					DESIGNED BY: SC CHECKED BY: SC DRAWN BY: RS APPROVED BY: KZ SCALE: HORIZONTAL 1:500 VERTICAL RELEASED FOR CONSTRUCTION SIGNED BY K.R. ZUREK DATE: 2011 11 23	ENGINEER'S SEAL ORIGINAL SIGNED BY S.R.J. COURNOYER NOV. 21, 2011 CONSULTANT DRAWING NUMBER: -	<p>THE CITY OF WINNIPEG WATER AND WASTE DEPARTMENT ENGINEERING DIVISION</p> <p>2011 SEWER RENEWALS BY CIPP LINING POLSON AVENUE 2ND MH E OF AIRLIES STREET TO 3RD MH E OF AIRLIES STREET</p>	SHEET 61 OF 95 CITY DRAWING NUMBER 9679
NO. REVISIONS DATE BY		DATE: 2011 11 23 PLOT DATE: 2011 11 24	DATE: 2011 11 23	BID OPPORTUNITY: 811-2011 FILE PATH: R:\DRAWINGS\SEWER\2011_RENEWALS\2011 CIPP LININGS\CONTRACT 2\CIPP DRAWINGS\ CONTRACT NUMBER: 19 FILE NAME: 9679.dwg					