

- CONSTRUCTION NOTES FOR ROADWAY:**
1. BASE LINE = SOUTHBOUND (MEDIAN) CONTROL LINE. SEE SHEET 101 FOR CONTROL LINE GEOMETRY.
  2. FINAL CURB HEIGHT TYPICALLY 150 mm.
  3. ALL DIMENSIONS ARE TO BACK OF CURB.
  4. ADJUST OR REPLACE EXISTING DRAINAGE INLETS WITH NEW SD-024 OR SD-023 AS DIRECTED BY THE CONTRACT ADMINISTRATOR.
  5. ISOLATE MISCELLANEOUS ITEMS IN NEW CONCRETE WORKS AS PER SD-228C.
  6. PLANE HEADERS AT ALL INTERSECTING PUBLIC STREETS.
  7. LEGAL PLAN AND UNDERGROUND INFORMATION FROM CITY OF WINNIPEG LBIS.
  8. TRAFFIC SIGNAL POLES, CONTROLLERS AND UNDERGROUND APPURTENANCES IN PROJECT AREA TO BE UPGRADED BY OTHERS.
  9. CONTRACTOR TO TAKE PRECAUTIONARY STEPS TO AVOID DAMAGE FROM CONSTRUCTION ACTIVITIES TO TREES WITHIN THE LIMITS OF CONSTRUCTION.
  10. LOCATION OF EXISTING SERVICES TO BE CONFIRMED IN THE FIELD BY THE CONTRACTOR.
  11. PLANE EXISTING ASPHALT OVERLAY WITHIN CONTRACT LIMITS TO DEPTH INDICATED BY THE CONTRACT ADMINISTRATOR.
  12. LIMITS OF CURB AND GUTTER REPLACEMENT, JOINT AND SLAB REPAIRS, GRANULAR SHOULDER REGRADING, AND TIE INS TO BE FINALIZED IN THE FIELD BY THE CONTRACT ADMINISTRATOR.
  13. ADJUST ALL WATER VALVES AND MANHOLES WITHIN THE CONSTRUCTION LIMITS OF PROJECT.
  14. CONTRACTOR SHALL TAKE PRECAUTIONARY STEPS TO AVOID EXISTING SPRINKLER SYSTEM ON MANITOBA LEGISLATURE AND GREAT WEST LIFE PROPERTIES. CONTRACTOR SHALL BE RESPONSIBLE TO RESTORE AND OR REPAIR SPRINKLER SYSTEM DAMAGED BY CONSTRUCTION.

**METRIC**  
WHOLE NUMBERS INDICATE MILLIMETRES  
DECIMALIZED NUMBERS INDICATE METRES

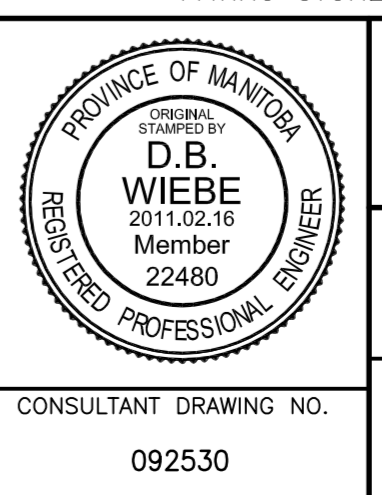
**WARNING**  
IF POWER EQUIPMENT OR EXPLOSIVES ARE TO BE USED FOR EXCAVATION ON THIS PROJECT THE CONTRACTOR MUST:

1. NOTIFY THE GAS COMPANY OF THE PROPOSED LOCATION OF EXCAVATION.
2. TAKE PRECAUTION TO AVOID DAMAGE TO GAS COMPANY INSTALLATIONS SEE PROVINCIAL REGULATION 210/72 FOR DETAILS.



B.M. 35-076 (N: 5527196 E: 633022.129) ELEV. 232.401			
00	ISSUED FOR TENDER	11.02.18	DBW
NO.	REVISIONS	DATE	BY

<b>DILLON CONSULTING</b>	
DESIGNED BY: RTP	CHECKED BY: DBW
DRAWN BY: PMW	APPROVED BY: DPK
HOR. SCALE: 1 : 250	RELEASED FOR CONSTRUCTION ORIGINAL SIGNED DATE: 11.02.16
VERTICAL: 1 : 10	DATE: 2011.02.18



**THE CITY OF WINNIPEG**  
PUBLIC WORKS DEPARTMENT  
ENGINEERING DIVISION

**OSBORNE STREET BRIDGE**  
REHABILITATION & RELATED WORKS

PAVING & GRADING  
STA: 1+455 TO 1+580

CITY DRAWING NUMBER B109-11-127	122
SHEET 122 OF 131	

CONSULTANT DRAWING NO. 092530