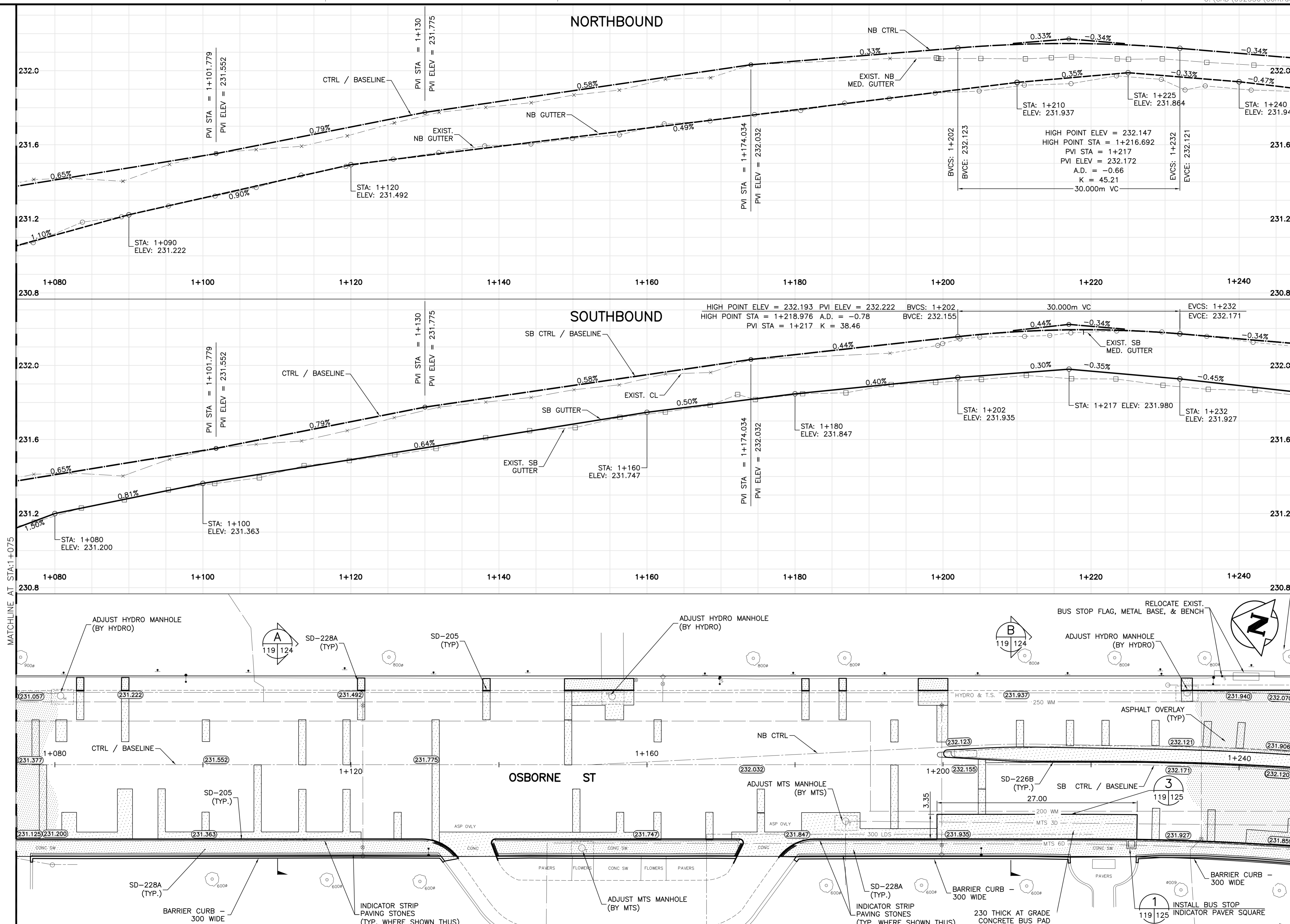


### NORTHBOUND

### SOUTHBOUND

### OSBORNE ST



- CONSTRUCTION NOTES FOR ROADWAY:**
1. BASE LINE = SOUTHBOUND (MEDIAN) CONTROL LINE. SEE SHEET 101 FOR CONTROL LINE GEOMETRY.
  2. FINAL CURB HEIGHT TYPICALLY 150 mm.
  3. ALL DIMENSIONS ARE TO BACK OF CURB.
  4. ADJUST OR REPLACE EXISTING DRAINAGE INLETS WITH NEW SD-024 OR SD-023 AS DIRECTED BY THE CONTRACT ADMINISTRATOR.
  5. ISOLATE MISCELLANEOUS ITEMS IN NEW CONCRETE WORKS AS PER SD-228C.
  6. PLANE HEADERS AT ALL INTERSECTING PUBLIC STREETS.
  7. LEGAL PLAN AND UNDERGROUND INFORMATION FROM CITY OF WINNIPEG LBIS.
  8. TRAFFIC SIGNAL POLES, CONTROLLERS AND UNDERGROUND APPURTENANCES IN PROJECT AREA TO BE UPGRADED BY OTHERS.
  9. CONTRACTOR TO TAKE PRECAUTIONARY STEPS TO AVOID DAMAGE FROM CONSTRUCTION ACTIVITIES TO TREES WITHIN THE LIMITS OF CONSTRUCTION.
  10. LOCATION OF EXISTING SERVICES TO BE CONFIRMED IN THE FIELD BY THE CONTRACTOR.
  11. PLANE EXISTING ASPHALT OVERLAY WITHIN CONTRACT LIMITS TO DEPTH INDICATED BY THE CONTRACT ADMINISTRATOR.
  12. LIMITS OF CURB AND GUTTER REPLACEMENT, JOINT AND SLAB REPAIRS, GRANULAR SHOULDER REGRADING, AND THE INS TO BE FINALIZED IN THE FIELD BY THE CONTRACT ADMINISTRATOR.
  13. ADJUST ALL WATER VALVES AND MANHOLES WITHIN THE CONSTRUCTION LIMITS OF PROJECT.
  14. CONTRACTOR SHALL TAKE PRECAUTIONARY STEPS TO AVOID EXISTING SPRINKLER SYSTEM ON MANITOBA LEGISLATURE AND GREAT WEST LIFE PROPERTIES. CONTRACTOR SHALL BE RESPONSIBLE TO RESTORE AND OR REPAIR SPRINKLER SYSTEM DAMAGED BY CONSTRUCTION.

MATCHLINE AT STA:1+075

MATCHLINE AT STA:1+245

**METRIC**

WHOLE NUMBERS INDICATE MILLIMETRES  
DECIMAL NUMBERS INDICATE METRES

**WARNING**

IF POWER EQUIPMENT OR EXPLOSIVES ARE TO BE USED FOR EXCAVATION ON THIS PROJECT THE CONTRACTOR MUST:

1. NOTIFY THE GAS COMPANY OF THE PROPOSED LOCATION OF EXCAVATION.
2. TAKE PRECAUTION TO AVOID DAMAGE TO GAS COMPANY INSTALLATIONS SEE PROVINCIAL REGULATION 210/72 FOR DETAILS.

MATCHLINE AT STA:1+075

**APEGM**  
Certificate of Authorization  
Dillon Consulting Limited (MB)  
No. 1789 Date: 2011.02.16

B.M. 35-076 (N: 5527196 E: 633022.129)  
ELEV. 232.401

**DILLON CONSULTING**

DESIGNED BY	RTP	CHECKED BY	DBW
DRAWN BY	PMW	APPROVED BY	DPK
HOR. SCALE:	1 : 250	RELEASED FOR CONSTRUCTION ORIGINAL SIGNED	DATE 11.02.16
VERTICAL:	1 : 10	DATE	2011.02.18

PROVINCE OF MANITOBA  
REGISTERED PROFESSIONAL ENGINEER  
D.B. WIEBE  
2011.02.16  
Member 22480

**THE CITY OF WINNIPEG**  
PUBLIC WORKS DEPARTMENT  
ENGINEERING DIVISION

**OSBORNE STREET BRIDGE**  
REHABILITATION & RELATED WORKS

PAVING & GRADING  
STA: 1+075 TO 1+245

CITY DRAWING NUMBER  
B109-11-124  
SHEET 119 OF 131

CONSULTANT DRAWING NO.  
092530

119