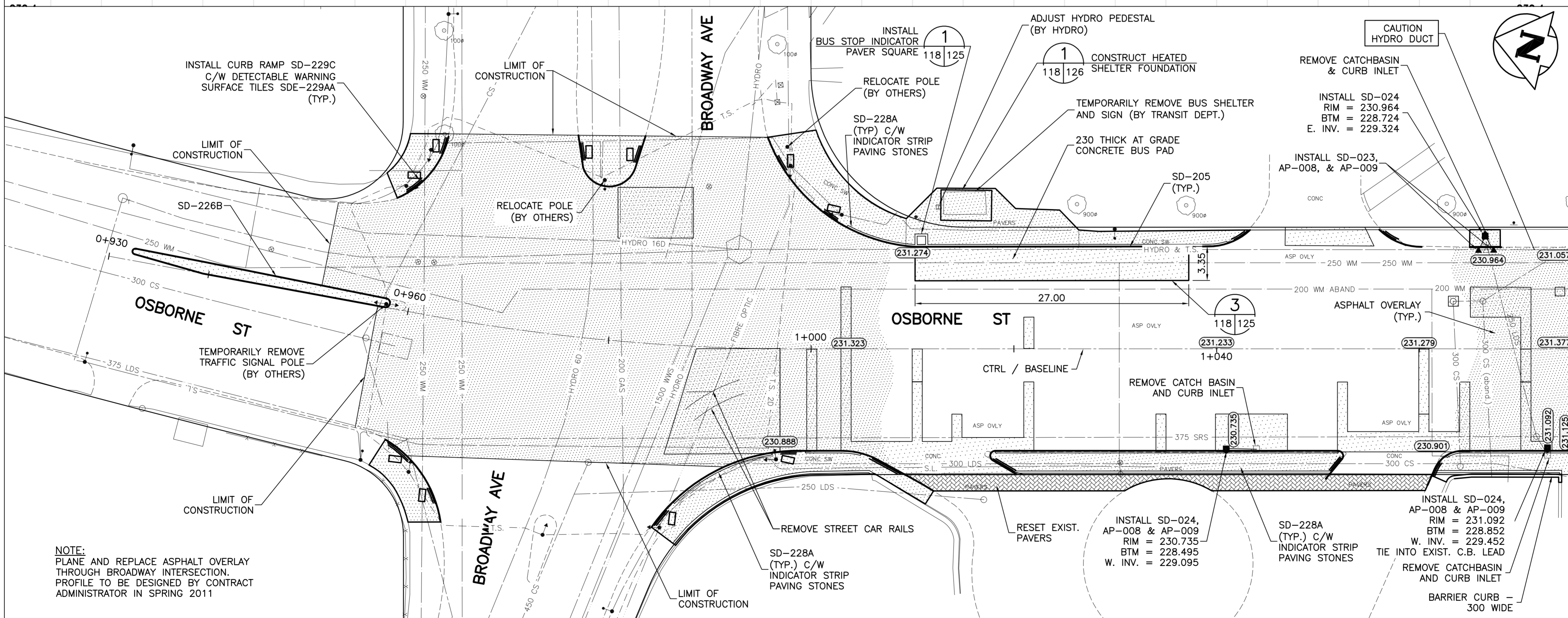


- CONSTRUCTION NOTES FOR ROADWAY:**
1. BASE LINE = SOUTHBOUND (MEDIAN) CONTROL LINE. SEE SHEET 101 FOR CONTROL LINE GEOMETRY.
 2. FINAL CURB HEIGHT TYPICALLY 150 mm.
 3. ALL DIMENSIONS ARE TO BACK OF CURB.
 4. ADJUST OR REPLACE EXISTING DRAINAGE INLETS WITH NEW SD-024 OR SD-023 AS DIRECTED BY THE CONTRACT ADMINISTRATOR.
 5. ISOLATE MISCELLANEOUS ITEMS IN NEW CONCRETE WORKS AS PER SD-228C.
 6. PLANE HEADERS AT ALL INTERSECTING PUBLIC STREETS.
 7. LEGAL PLAN AND UNDERGROUND INFORMATION FROM CITY OF WINNIPEG LBIS.
 8. TRAFFIC SIGNAL POLES, CONTROLLERS AND UNDERGROUND APPURTENANCES IN PROJECT AREA TO BE UPGRADED BY OTHERS.
 9. CONTRACTOR TO TAKE PRECAUTIONARY STEPS TO AVOID DAMAGE FROM CONSTRUCTION ACTIVITIES TO TREES WITHIN THE LIMITS OF CONSTRUCTION.
 10. LOCATION OF EXISTING SERVICES TO BE CONFIRMED IN THE FIELD BY THE CONTRACTOR.
 11. PLANE EXISTING ASPHALT OVERLAY WITHIN CONTRACT LIMITS TO DEPTH INDICATED BY THE CONTRACT ADMINISTRATOR.
 12. LIMITS OF CURB AND GUTTER REPLACEMENT, JOINT AND SLAB REPAIRS, GRANULAR SHOULDER REGRADING, AND TIE INS TO BE FINALIZED IN THE FIELD BY THE CONTRACT ADMINISTRATOR.
 13. ADJUST ALL WATER VALVES AND MANHOLES WITHIN THE CONSTRUCTION LIMITS OF PROJECT.
 14. CONTRACTOR SHALL TAKE PRECAUTIONARY STEPS TO AVOID EXISTING SPRINKLER SYSTEM ON MANITOBA LEGISLATURE AND GREAT WEST LIFE PROPERTIES. CONTRACTOR SHALL BE RESPONSIBLE TO RESTORE AND OR REPAIR SPRINKLER SYSTEM DAMAGED BY CONSTRUCTION.



NOTE:
PLANE AND REPLACE ASPHALT OVERLAY THROUGH BROADWAY INTERSECTION. PROFILE TO BE DESIGNED BY CONTRACT ADMINISTRATOR IN SPRING 2011

MATCHLINE AT STA: 1+075

METRIC
WHOLE NUMBERS INDICATE MILLIMETRES
DECIMALIZED NUMBERS INDICATE METRES

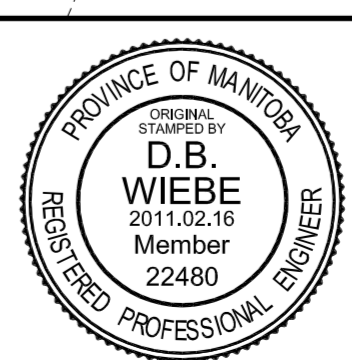
WARNING
IF POWER EQUIPMENT OR EXPLOSIVES ARE TO BE USED FOR EXCAVATION ON THIS PROJECT THE CONTRACTOR MUST:

1. NOTIFY THE GAS COMPANY OF THE PROPOSED LOCATION OF EXCAVATION.
2. TAKE PRECAUTION TO AVOID DAMAGE TO GAS COMPANY INSTALLATIONS SEE PROVINCIAL REGULATION 210/72 FOR DETAILS.



B.M. 35-076 (N: 5527196 E: 633022.129)
ELEV. 232.401

DESIGNED BY: RTP	CHECKED BY: DBW
DRAWN BY: PMW	APPROVED BY: DPK
HOR. SCALE: 1 : 250	RELEASED FOR CONSTRUCTION ORIGINAL DATE: 11.02.16
VERTICAL: 1 : 10	SIGNED: 11.02.16
DATE: 2011.02.18	DATE: 11.02.16



THE CITY OF WINNIPEG
PUBLIC WORKS DEPARTMENT
ENGINEERING DIVISION

OSBORNE STREET BRIDGE
REHABILITATION & RELATED WORKS

PAVING & GRADING
STA: 0+930 TO 1+075

CITY DRAWING NUMBER
B109-11-123
SHEET 118 OF 131

CONSULTANT DRAWING NO.
092530

118