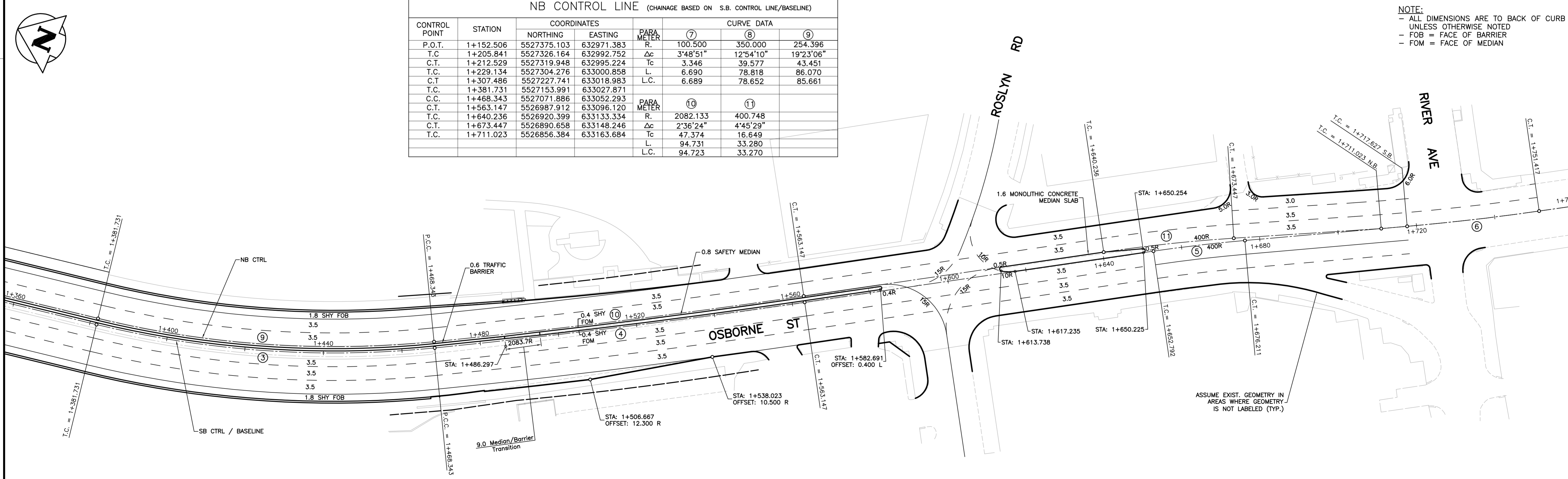


CONTROL LINE / BASELINE						
CONTROL POINT	STATION	COORDINATES		PARAMETER	CURVE DATA	
		NORTHING	EASTING		(1)	(2)
P.O.T.	0+930	5527585.751	632901.434	R.	200.000	390.500
T.C.	0+961.912	5527554.349	632907.112	Δc	10'28'48"	13'51'27"
C.T.	0+998.494	5527519.144	632916.869	Tc	18.342	47.455
T.C.	1+222.067	5527310.046	632996.004	L.	36.582	94.447
C.T.	1+316.513	5527218.549	633018.479	L.C.	36.531	94.217
T.C.	1+381.731	5527153.800	633026.283			
C.C.	1+468.343	5527071.178	633050.858			
C.T.	1+563.147	5526987.139	633094.719	PARAMETER	(4)	(5)
T.C.	1+652.792	5526908.631	633137.993	R.	2083.733	400.000
C.T.	1+676.211	5526887.802	633148.691	Δc	2'36'24"	3'21'16"
T.C.	1+717.627	5526850.423	633166.528	Tc	47.410	11.713
C.T.	1+751.417	5526820.353	633181.930	L.	94.804	23.419
P.O.T.	1+782.992	5526792.667	633197.111	L.C.	94.796	23.415

NB CONTROL LINE (CHAINAGE BASED ON S.B. CONTROL LINE/BASELINE)						
CONTROL POINT	STATION	COORDINATES		PARAMETER	CURVE DATA	
		NORTHING	EASTING		(7)	(8)
P.O.T.	1+152.506	5527375.103	632971.383	R.	100.500	350.000
T.C.	1+205.841	5527326.164	632992.752	Δc	3'48'51"	12'54'10"
C.T.	1+212.529	5527319.948	632995.224	Tc	3.346	39.577
T.C.	1+229.134	5527304.276	633000.858	L.	6.690	78.818
C.T.	1+307.486	5527227.741	633018.983	L.C.	6.689	78.652
T.C.	1+381.731	5527153.991	633027.871			
C.C.	1+468.343	5527071.886	633052.293			
C.T.	1+563.147	5526987.912	633096.120	PARAMETER	(10)	(11)
T.C.	1+640.236	5526920.399	633133.334	R.	2082.133	400.748
C.T.	1+673.447	5526890.658	633148.246	Δc	2'36'24"	4'45'29"
T.C.	1+711.023	5526856.384	633163.684	Tc	47.374	16.649
				L.	94.731	33.280
				L.C.	94.723	33.270

NOTE:
 - ALL DIMENSIONS ARE TO BACK OF CURB UNLESS OTHERWISE NOTED
 - FOB = FACE OF BARRIER
 - FOM = FACE OF MEDIAN



B.M. 35-076 (N: 5527196 E: 633022.129) ELEV. 232.401			
00 ISSUED FOR TENDER	11.02.18	DBW	
NO. REVISIONS	DATE	BY	

DESIGNED BY: RTP	CHECKED BY: DBW
DRAWN BY: PMW	APPROVED BY: DPK
HOR. SCALE: 1 : 500	RELEASED FOR CONSTRUCTION ORIGINAL SIGNED DATE: 11.02.16
VERTICAL:	DATE: 2011.02.18



		THE CITY OF WINNIPEG PUBLIC WORKS DEPARTMENT ENGINEERING DIVISION
OSBORNE STREET BRIDGE REHABILITATION & RELATED WORKS		CITY DRAWING NUMBER B109-11-122 SHEET 117 OF 131
CONSULTANT DRAWING NO. 092530		CONTROL LINE GEOMETRY 117