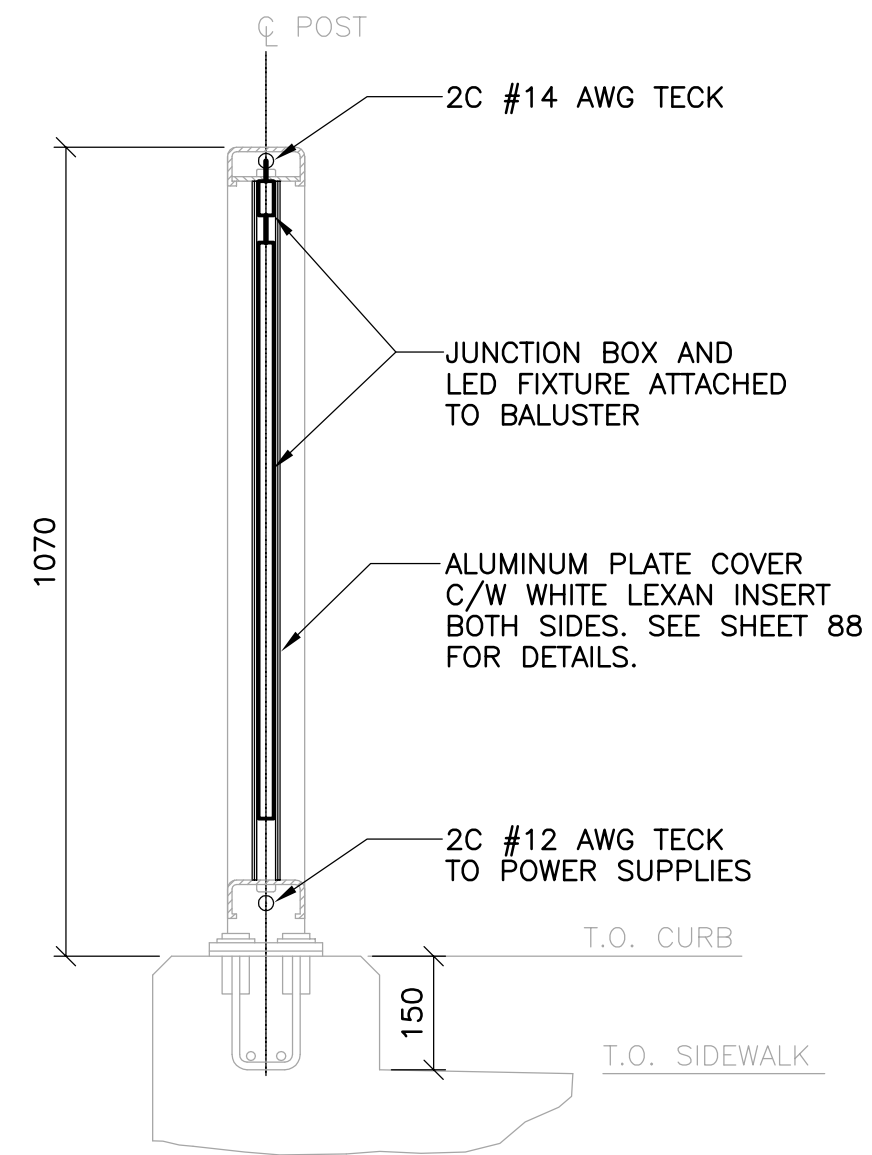
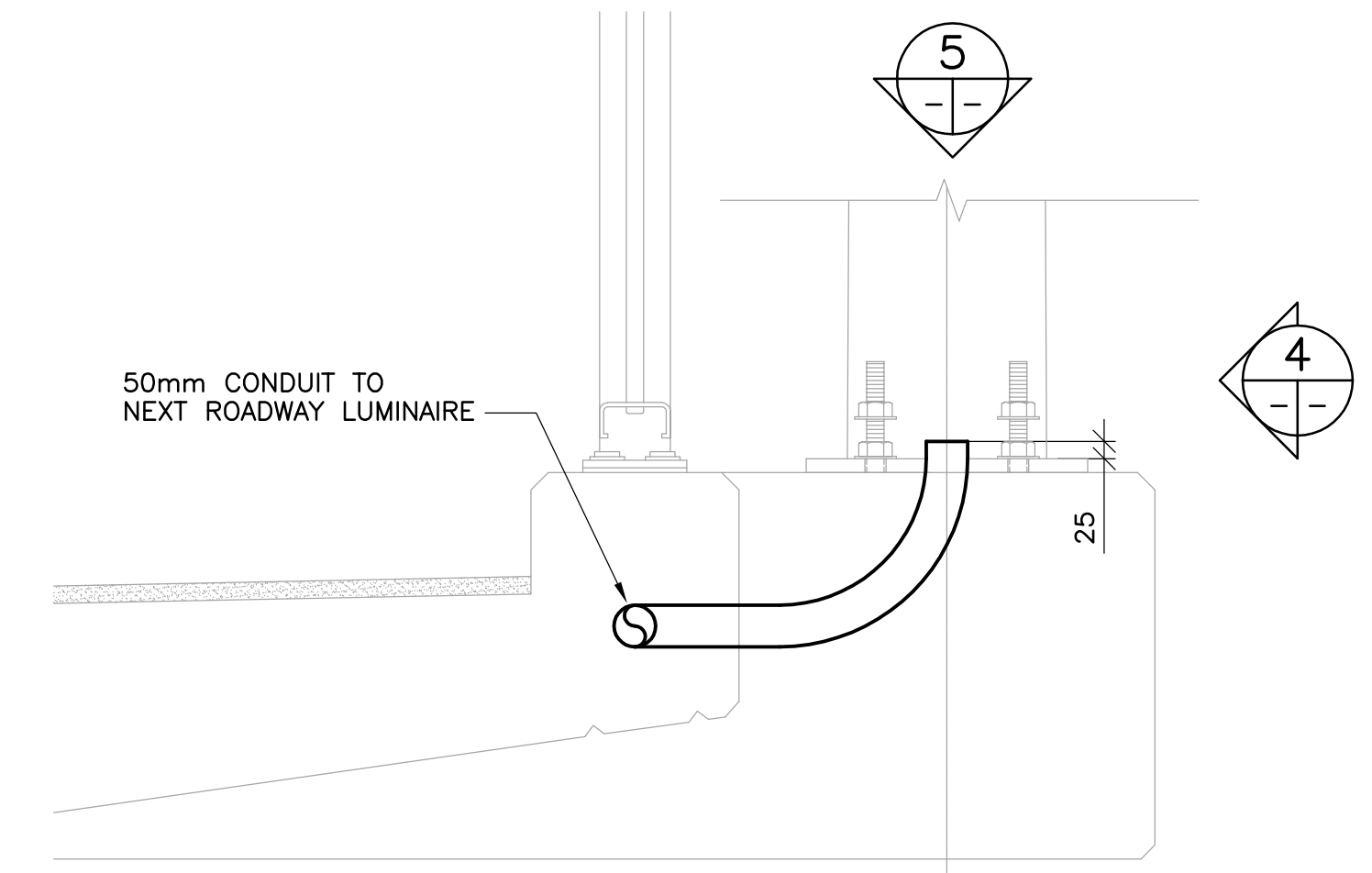


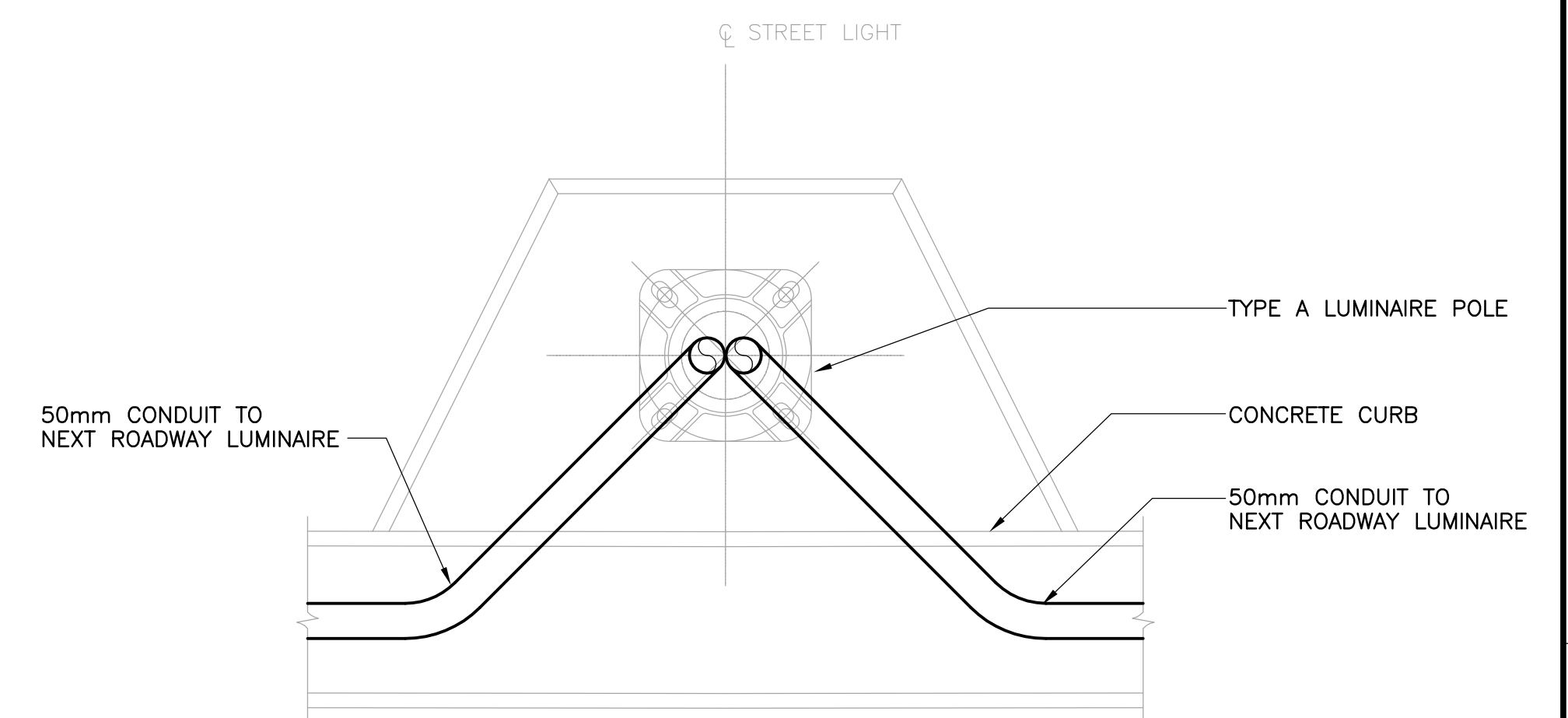
1 TYPICAL HANDRAIL LIGHTING WIRING DETAIL
113 114 1 : 10



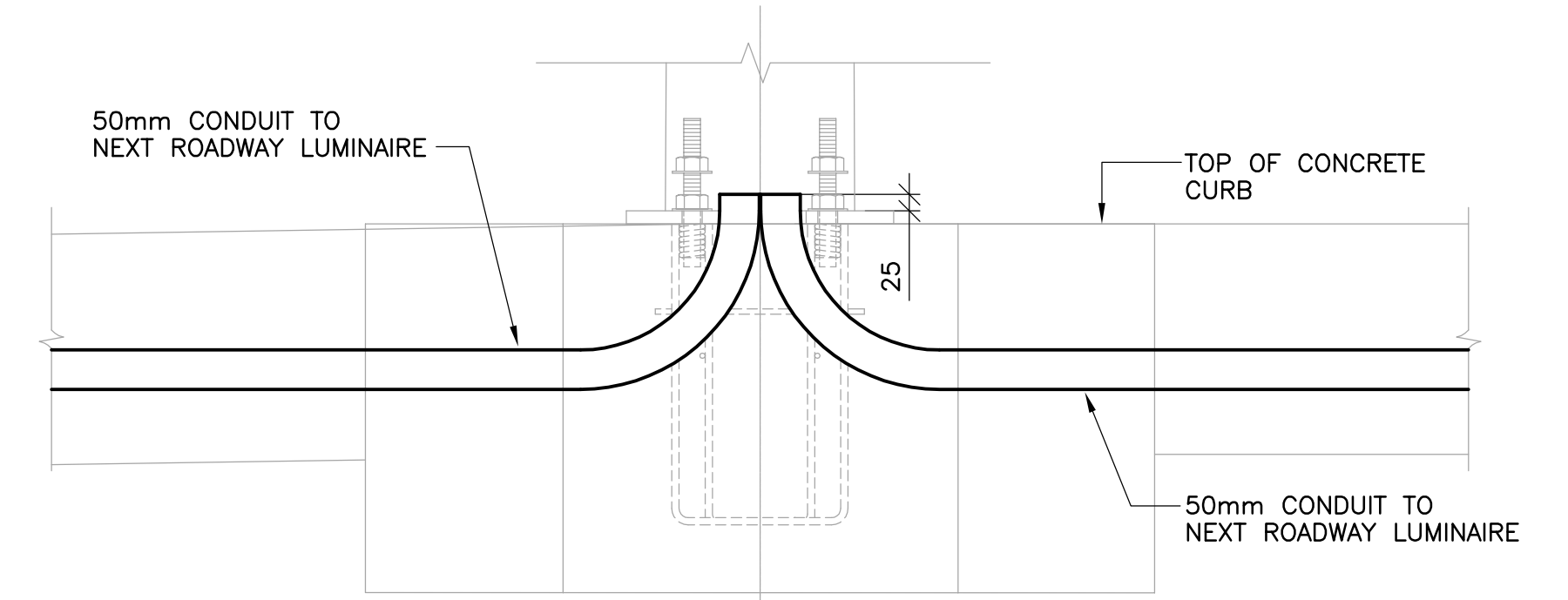
2 HANDRAIL LED FIXTURE DETAIL
1 : 10
NOTE:
COORDINATE WITH STRUCTURAL DRAWINGS



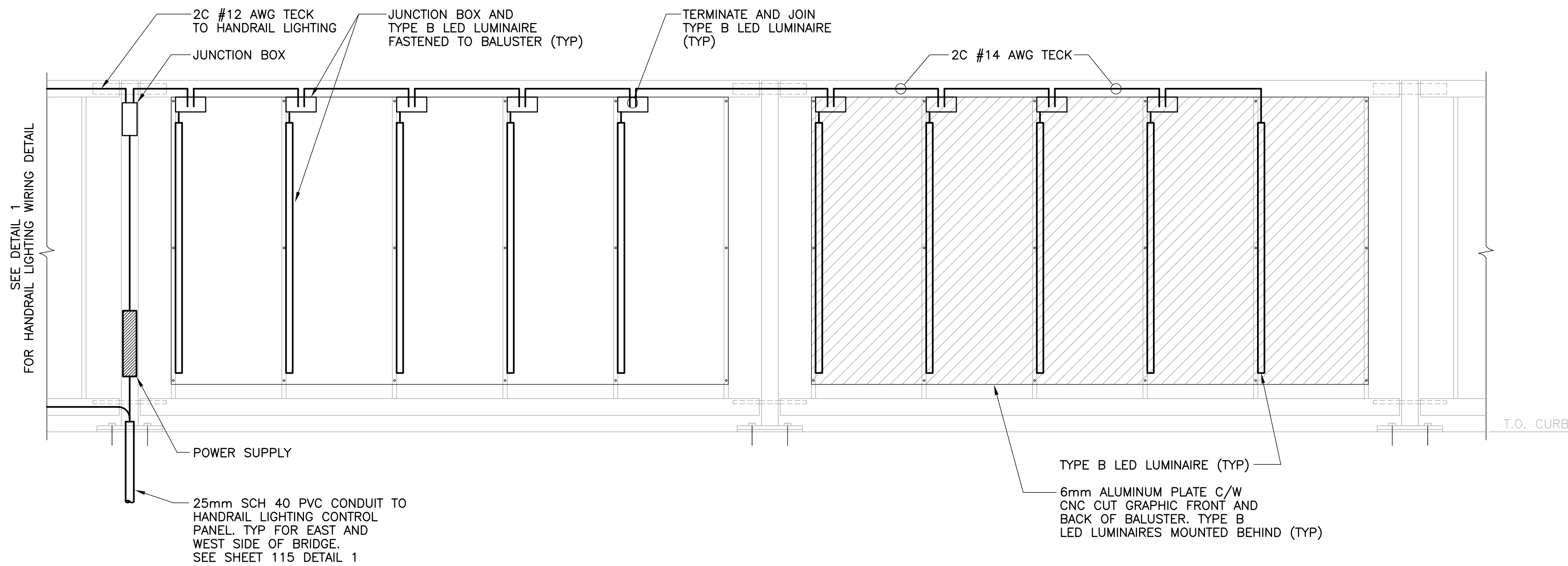
4 TYPE A LUMINAIRE BASE DETAIL - SECTION
N.T.S.



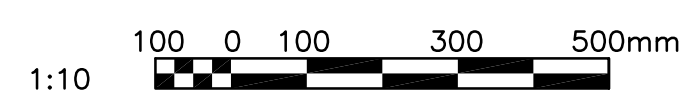
5 TYPE A LUMINAIRE BASE DETAIL - TOP VIEW
N.T.S.



6 TYPE A LUMINAIRE BASE DETAIL - ELEVATION
N.T.S.

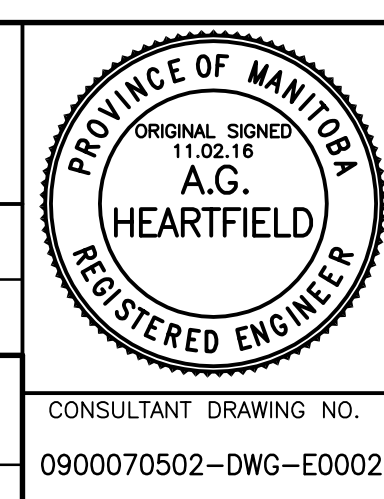


3 TYPICAL ART GATEWAY PANEL WIRING DETAIL
1 : 10
NOTE:
COORDINATE WITH DETAILS ON SHEET 89.



B.M. ELEV.	F.B.	NO.	REVISIONS	DATE	BY
		00	ISSUED FOR TENDER	11.02.18	A.H.

WARDROP A TETRA TECH COMPANY	
DESIGNED BY H.P.C.C.	CHECKED BY A.H.
DRAWN BY H.P.C.C.	APPROVED BY R.H.W.
HOR. SCALE: AS NOTED	ACCEPTED BY DATE
VERTICAL: AS NOTED	ORIGINAL SIGNED 11.02.16
NO.	DATE 11.02.07



THE CITY OF WINNIPEG PUBLIC WORKS DEPARTMENT TRANSPORTATION ENGINEERING DIVISION	
OSBORNE STREET BRIDGE REHABILITATION & RELATED WORKS	
BRIDGE LIGHTING AND DETAILS	
CITY DRAWING NUMBER B109-11-119	SHEET 114 OF 131
114	

